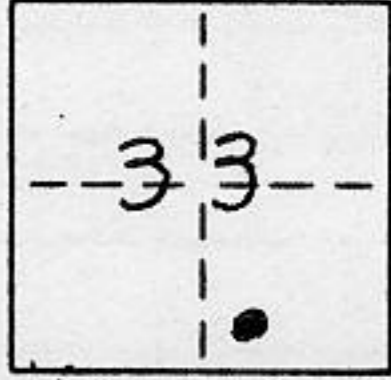


CORNER RECORD

COUNTY OF PLACER T. 16 N R. 17 E M.D.M. MERIDIAN CALIFORNIA

CORNER TYPE: GOV'T. CORNER MEANDER RANCHO CONTROL OTHER

CORNER IDENTIFICATION - DATE OF VISIT JULY 1, 1992

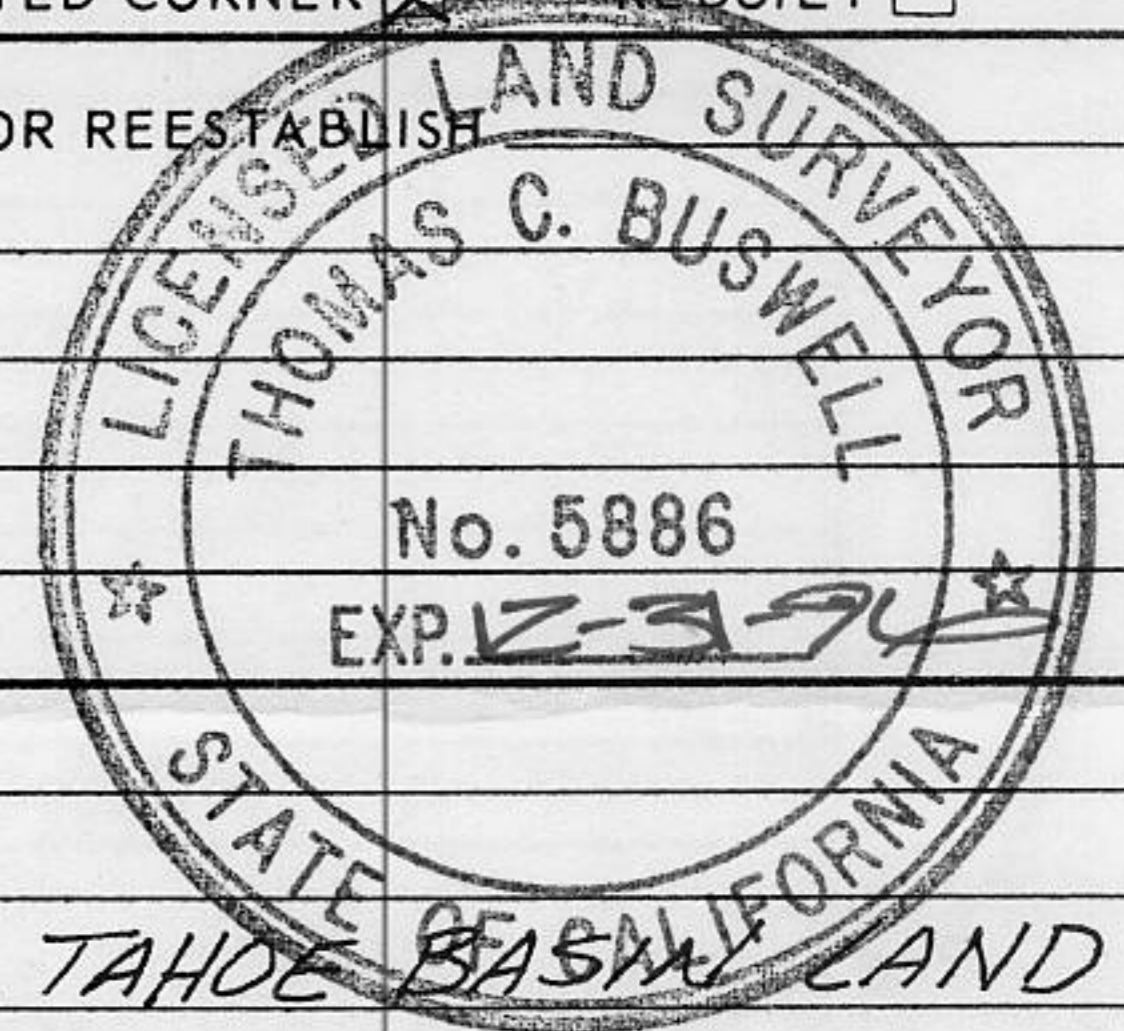


LOT 139, DOLLAR POINT, UNIT No. 2, M.O.R. BK. G PG. 7

CORNER - LEFT AS FOUND FOUND AND TAGGED REESTABLISHED OBLITERATED CORNER REBUILT

PHYSICAL DESCRIPTION OF CORNER FOUND: EVIDENCE AND METHOD USED TO IDENTIFY OR REESTABLISH

● (FOUND) MONUMENT AS NOTED



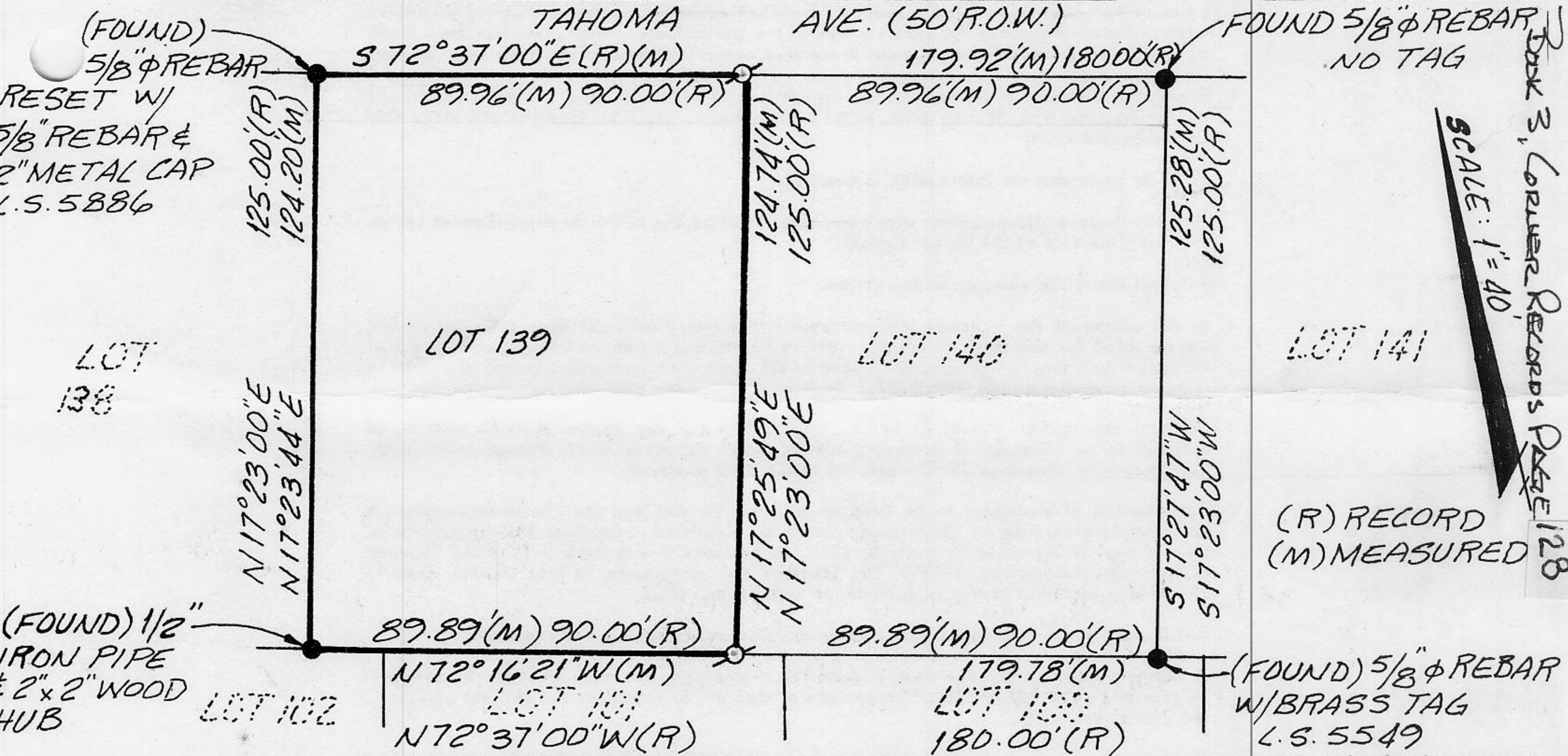
PHYSICAL DESCRIPTION OF MONUMENTS REBUILT OR PERPETUATED

♂ (SET) 5/8" ϕ REBAR w/ 2" ϕ METAL CAP, L.S. 5886, TAHOE BASIN LAND SURVEYING, THOMAS C. BUSWELL P.L.S.

CALIFORNIA COORDINATE SYSTEM ORDER: FIRST SECOND THIRD

STATIONS USED: NGS (USC & GS) STATE COUNTY OTHER STATION _____ STATION _____

ZONE _____ ELEVATION _____ NORTHINGS (Y) _____ EASTINGS (X) _____



SURVEYOR'S CERTIFICATE

THIS CORNER RECORD WAS PREPARED BY ME OR UNDER MY DIRECTION IN CONFORMANCE WITH THE LAND SURVEYORS ACT ON JULY 15 1992

SIGNED: _____

L.S. or R.C.E. No.: LS 5886

SEAL

COUNTY SURVEYOR'S CERTIFICATE

THIS CORNER RECORD WAS RECEIVED 1/25 1993 AND EXAMINED AND FILED 9/29 1993

BY: John Ruggens
TITLE: DEPUTY COUNTY SURVEYOR

DOCUMENT No. _____

STATEMENT ON BACK OF SHEET

YES NO