

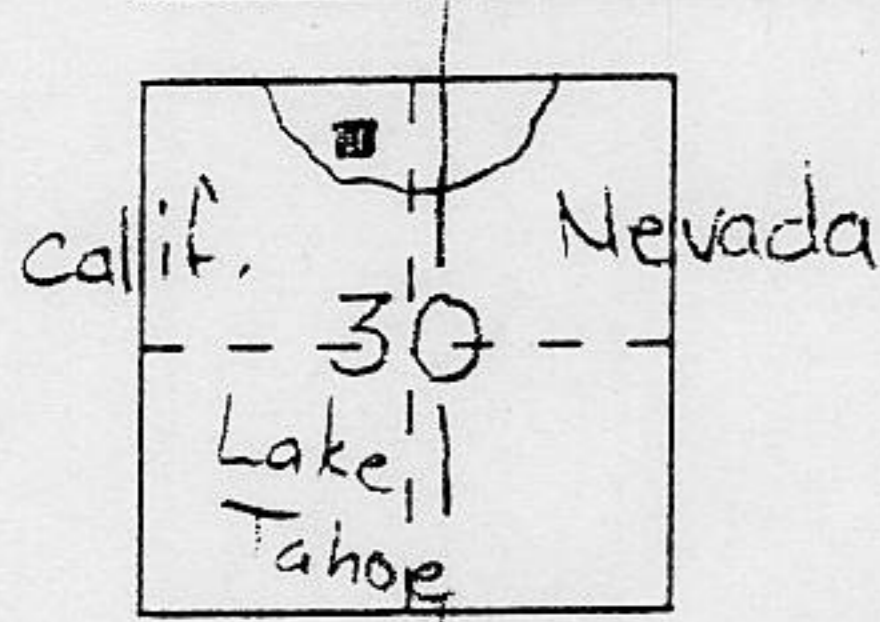
CORNER RECORD

Document Number _____

City of Brockway Springs

County of Placer, California

Brief Legal Description Ptn Sec 30 T16N R18E MDM



CORNER TYPE

Government Corner Control
 Meander Property
 Rancho Other
 Date of Survey 09 NOV 1992

COORDINATES (Optional)

N. _____
 E. _____
 Zone _____ Datum _____
 Elev. _____

Corner — Left as found Found and tagged Established Reestablished Rebuilt

Identification and type of corner found: Evidence used to identify or procedure used to establish or reestablish the corner:

see sketch

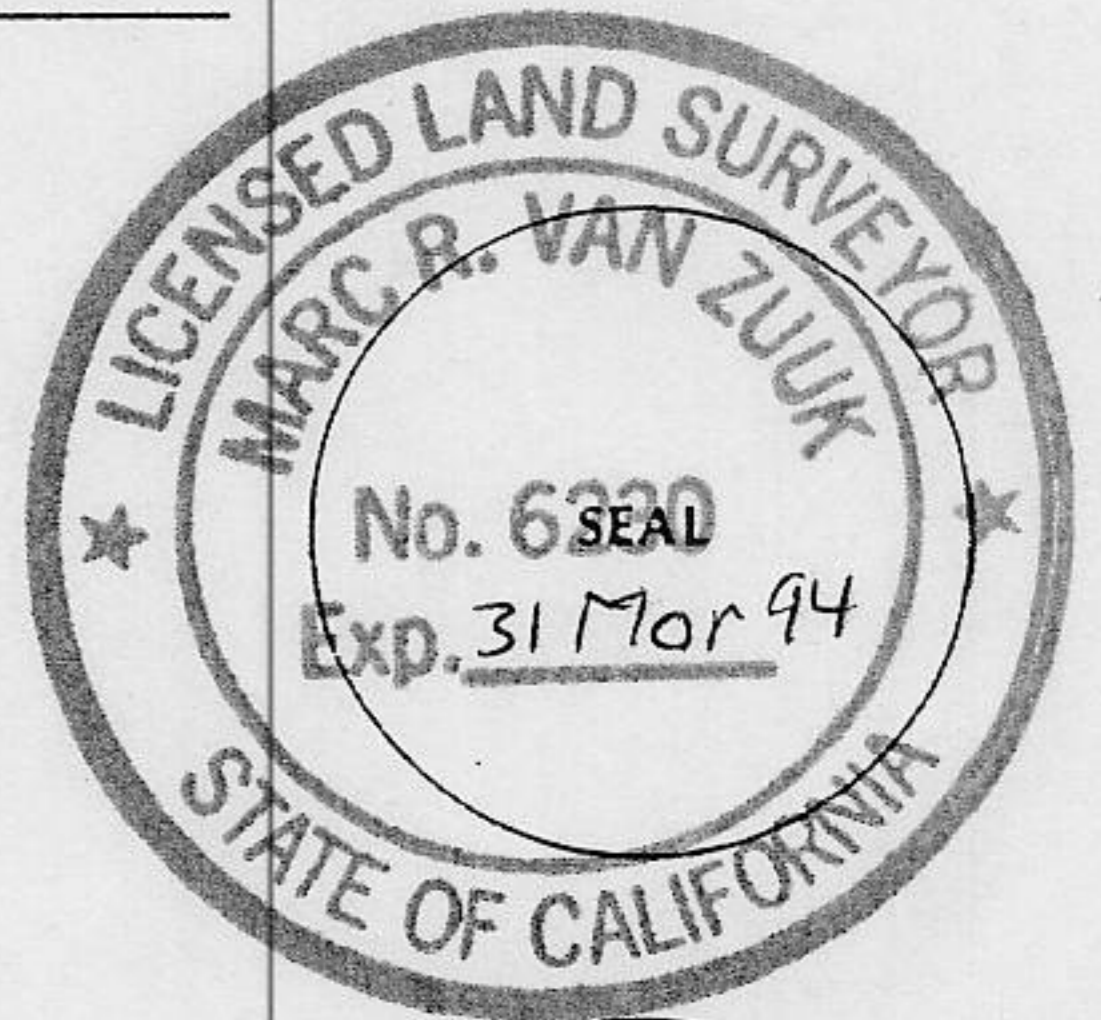
A description of the physical condition of the monument as found and as set or reset:

see sketch

SURVEYOR'S STATEMENT

This Corner Record was prepared by me or under my direction in conformance with the Land Surveyors' Act on 01 DEC 1992.

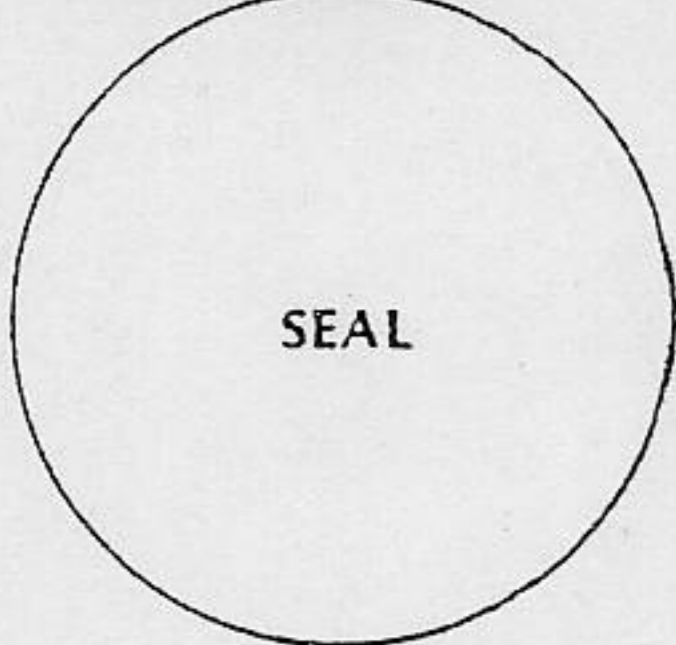
Signed [Signature] L.S. or R.C.E. Number LS 6230



COUNTY SURVEYOR'S STATEMENT

This Corner Record was received _____ 19____ and examined and filed FEB 2 1993.

Signed [Signature] Title DEPUTY COUNTY SURVEYOR



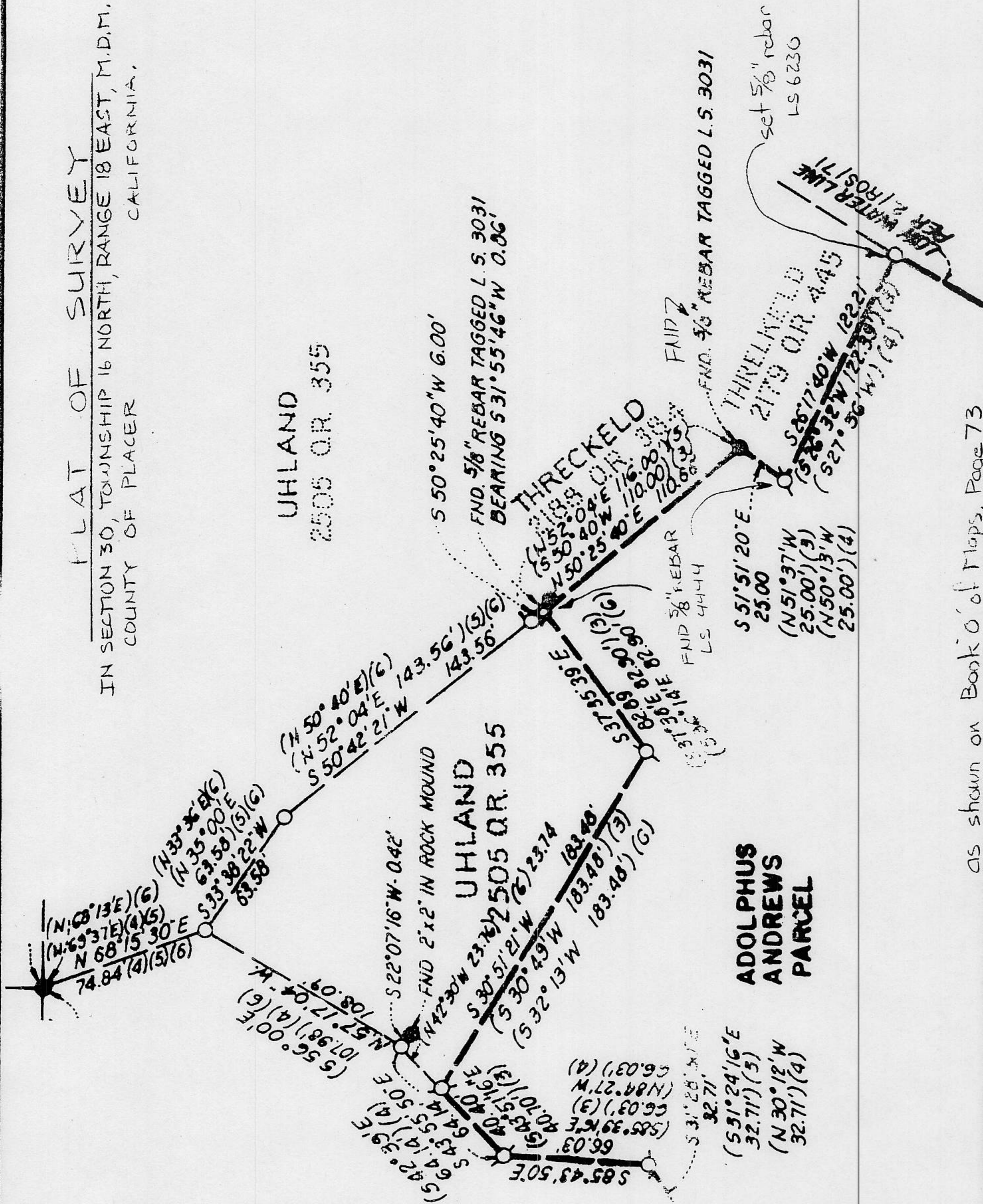
County Surveyor's Comment _____

Book 3, Corner Records, Page 133

PLAT OF SURVEY

IN SECTION 30, TOWNSHIP 16 NORTH, RANGE 18 EAST, M.D.M.
 COUNTY OF PLACER CALIFORNIA.

UHLAND
 2505 O.R. 355



ADOLPHUS
 ANDREWS
 PARCEL

as shown on Book O' of Maps, Page 73

90.592 N/E