

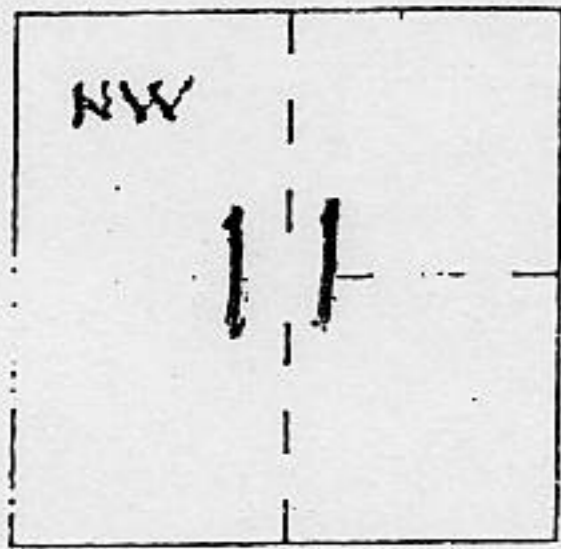
CORNER RECORD

Document Number \_\_\_\_\_

City of AUBURN

County of PLACER, California

Brief Legal Description LOT 6 OF RE-SUBDIVISION OF CANYON COURT PER D/MAPS/63



T. 12 N.  
R. 8 E.

CORNER TYPE

Government Corner  Control   
Meander  Property   
Rancho  Other   
Date of Survey OCT. 14, 1993

COORDINATES  
(Optional)

N. \_\_\_\_\_  
E. \_\_\_\_\_  
Zone \_\_\_\_\_ Datum \_\_\_\_\_  
Elev. \_\_\_\_\_

Corner — Left as found  Found and tagged  Established  Reestablished  Rebuilt

Identification and type of corner found: Evidence used to identify or procedure used to establish or reestablish the corner:

SEE SKETCH MAP ON PAGE 2

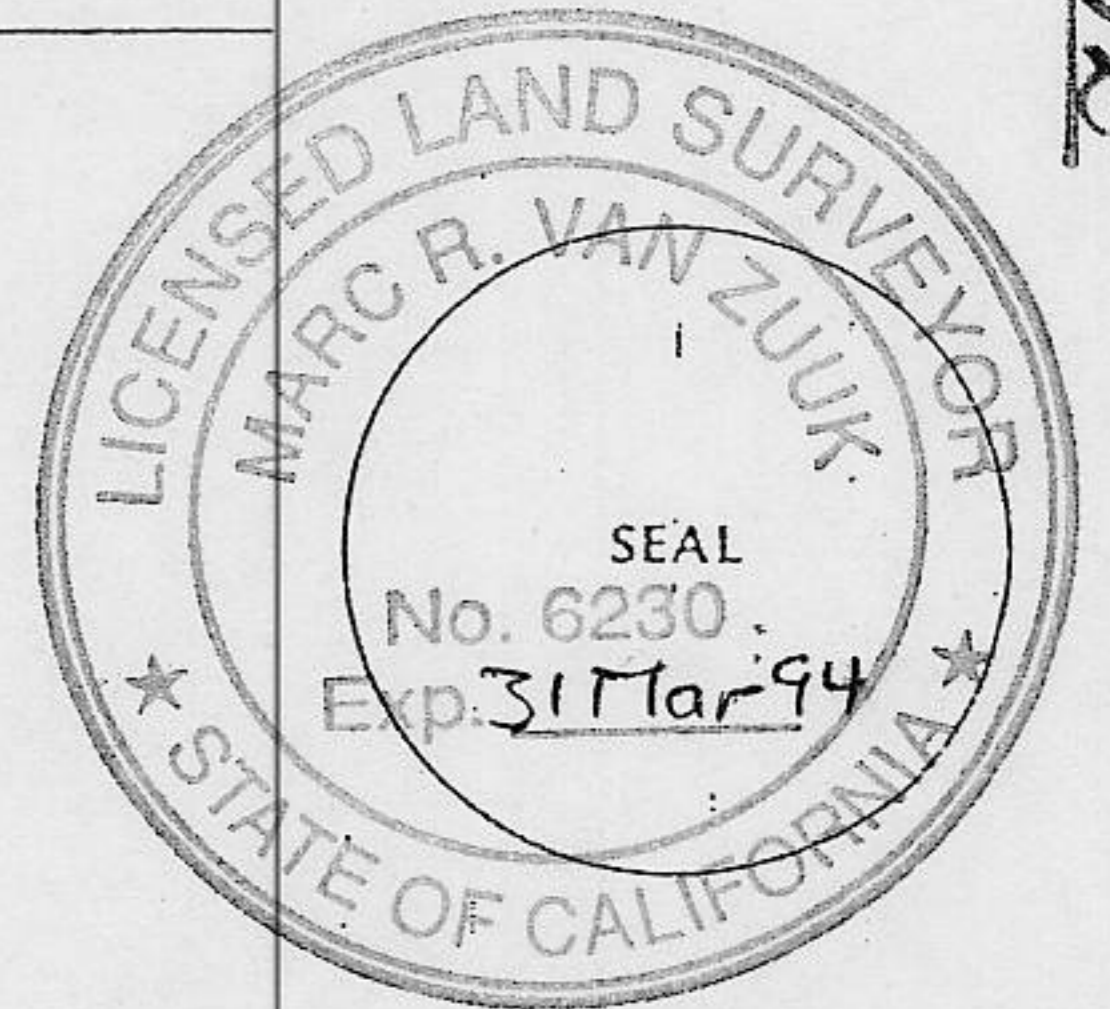
A description of the physical condition of the monument as found and as set or reset:

- ♂..... SET 3/4" IRON PIN TAGGED L.S. 6230
- ♂..... FND. 1/2" IRON PIN STAMPED L.S. 2515
- ..... FND. 1/2" IRON PIN PLACED TAG L.S. 6230

SURVEYOR'S STATEMENT

This Corner Record was prepared by me or under my direction in conformance with the Land Surveyors' Act on OCTOBER 19 19 93.

Signed [Signature] L.S. or R.C.E. Number L.S. 6230



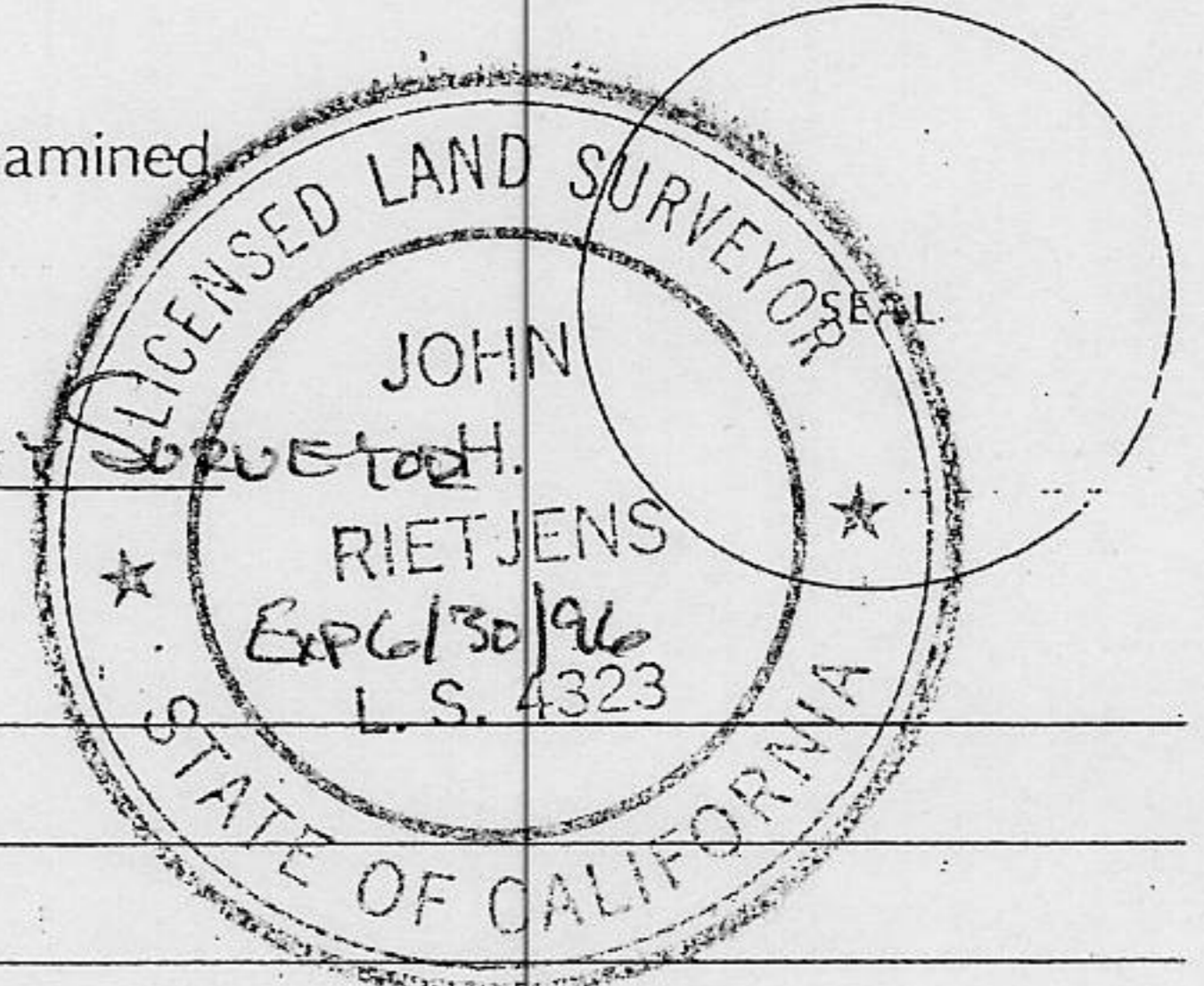
COUNTY SURVEYOR'S STATEMENT

This Corner Record was received OCT 21 19 93 and examined

and filed Oct 25 : 93.

Signed [Signature] Title Deputy County Surveyor

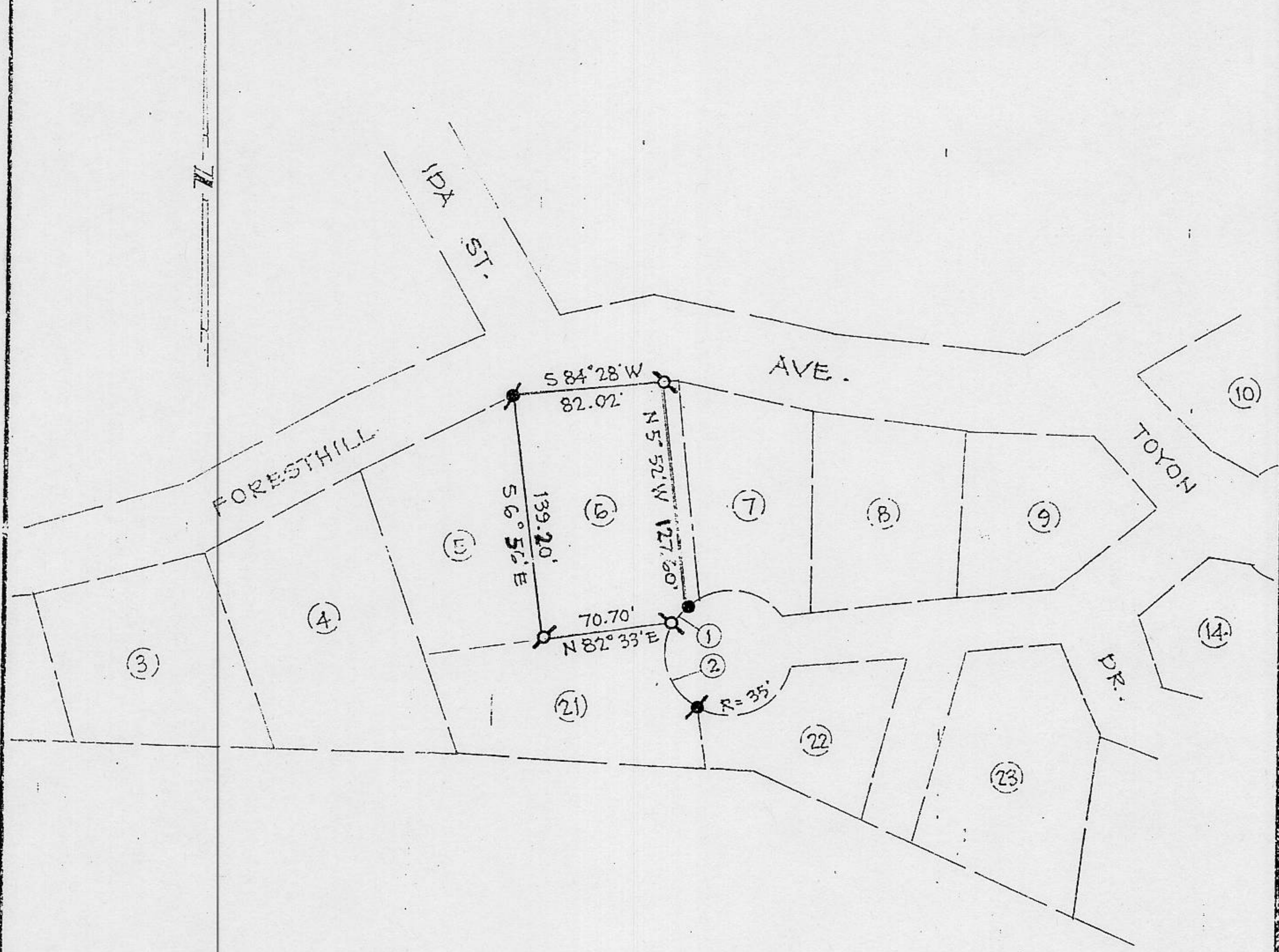
County Surveyor's Comment \_\_\_\_\_



BOOK 3 CORNER RECORDS PAGE 192

LEGEND

- SET 3/4" IRON PIN TAGGED L.S. 6230
- ⊙ FND. 1/2" IRON PIN STAMPED L.S. 2515
- ⊙ FND. 1/2" IRON PIN PLACED TAG L.S. 6230



CURVE DATA ① (REC.)  
 R = 35'  
 Ch = N 37° 59' E  
 12.66'

CURVE DATA ② (REC.)  
 R = 35'  
 Ch = N 19° 18' W  
 51.08'

SKETCH MAP

PREPARED FOR CURTIS JONES  
 SURVEY OF LOT 6 OF RE-SUBDIVISION  
 OF CANYON COURT PER D/MAPS/63  
 CITY OF AUBURN, PLACER COUNTY, CAL.  
 SCALE 1" = 100' OCT. 1993  
AUBURN ENGINEERS