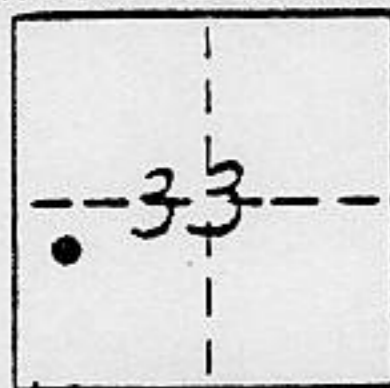


CORNER RECORD

COUNTY OF PLACER T. 16 N R. 17 E M.D. MERIDIAN CALIFORNIA

CORNER TYPE: GOV'T. CORNER MEANDER RANCHO CONTROL OTHER
 CORNER IDENTIFICATION - DATE OF VISIT 10-07 1988



LOT 203 DOLLAR POINT UNIT No. 4 H MAPS 40

CORNER - LEFT AS FOUND FOUND AND TAGGED REESTABLISHED OBLITERATED CORNER REBUILT

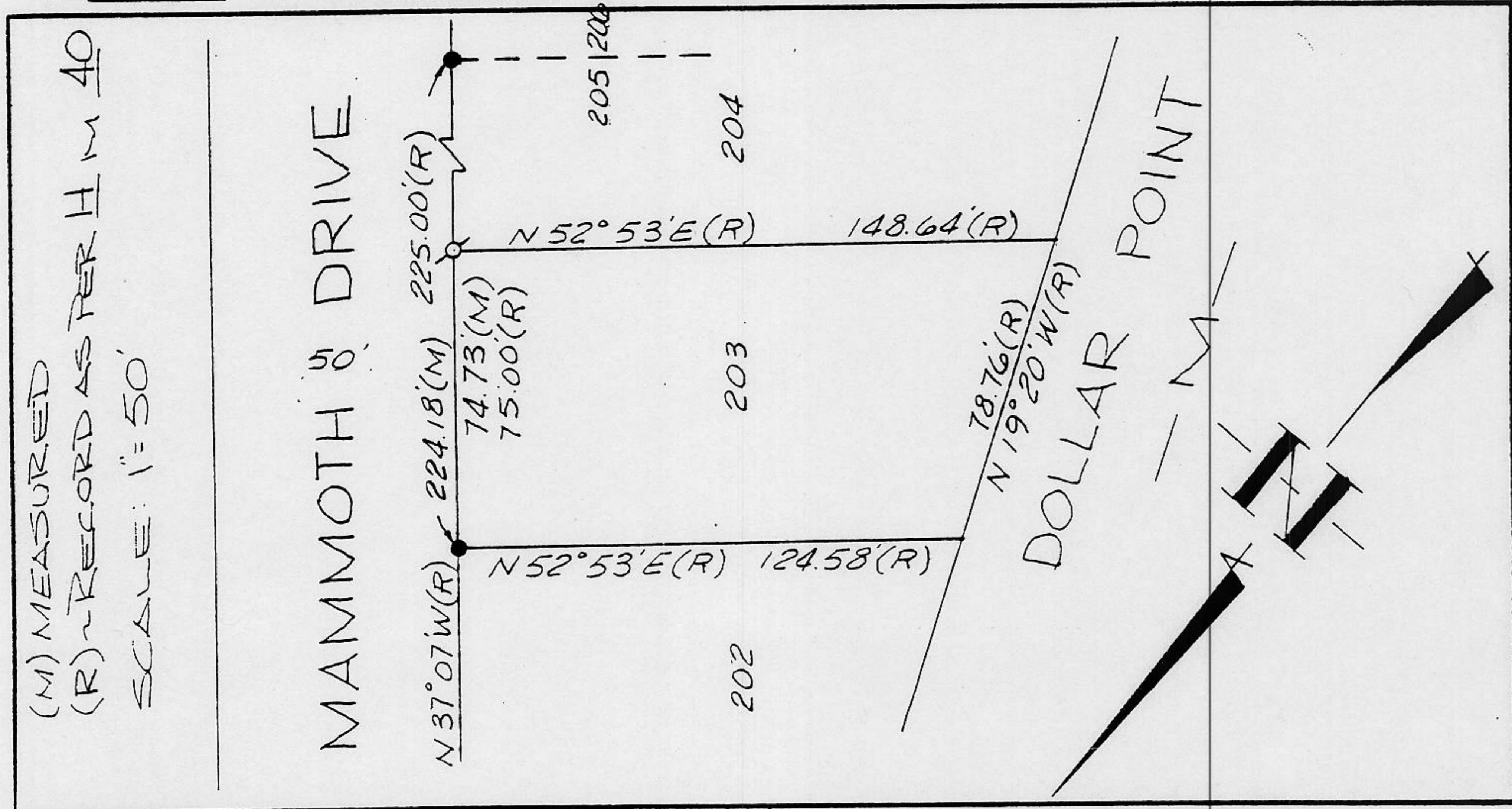
PHYSICAL DESCRIPTION OF CORNER FOUND: EVIDENCE AND METHOD USED TO IDENTIFY OR REESTABLISH _____

• ~ FOUND MONUMENT AS PER THAT CERTAIN MAP OF DOLLAR POINT SUBDIVISION UNIT No. 4 FILED IN BOOK H OF MAPS AT PAGE 40 IN THE OFFICE OF THE PLACER COUNTY, CALIFORNIA RECORDER.

PHYSICAL DESCRIPTION OF MONUMENTS REBUILT OR PERPETUATED _____

• ~ SET 5/8" Ø REBAR WITH YELLOW PLASTIC CAP
 L.S. 3422

CALIFORNIA COORDINATE SYSTEM ORDER: FIRST SECOND THIRD N/A
 STATIONS USED: NGS (USC & GS) STATE COUNTY OTHER STATION _____ STATION _____
 ZONE _____ ELEVATION _____ NORTHINGS (Y) _____ EASTINGS (X) _____



SURVEYOR'S CERTIFICATE

THIS CORNER RECORD WAS PREPARED BY ME OR UNDER MY DIRECTION IN CONFORMANCE WITH THE LAND SURVEYORS ACT ON 13 Jan 1988

SIGNED: _____

L.S. or R.C.E. No.: L.S. 3422

J/N 22.21



COUNTY SURVEYOR'S CERTIFICATE

THIS CORNER RECORD WAS RECEIVED _____ 19____ AND EXAMINED AND FILED 10/25 1993

BY: Jerry W. Tippin

TITLE: DEPUTY COUNTY SURVEYOR

DOCUMENT No. _____

STATEMENT ON BACK OF SHEET

YES NO

BOOK 3 CORNER RECORDS PAGE 195