

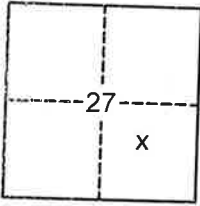
CORNER RECORD

Agency Index BK73 Pg 97
 Document Number 2020097

City of _____ County of PLACER, California
 Brief Legal Description (LOTS 4 & 5, BLOCK M, ICE LAKES SUBDIVISION NO.2, G/MAPS/1 O.R.P.C.)

CORNER TYPE

COORDINATES (Optional)



SEC. 27
 T. 17 N.
 R. 14 E.
 M.D.B. & M.

- Government Corner Control
 Meander Property
 Rancho Other

N. _____ E. _____
 Elevation _____
 Units Metric U.S. Survey Foot
 Horizontal Datum _____
 Zone _____ Epoch Date _____
 Vertical Datum _____

Date of Survey 11/5/2020

- Complies with Public Resources Code §§8801-8819
 Complies with Public Resources Code §§8890-8902

PLS Act Ref: 8765(d) 8771 8773 Other:

Corner/Monument: Left as found Established Rebuilt Pre-Construction
 Found and tagged Reestablished Referenced Post-Construction

Narrative of corner identified and monument as found, set, reset, replaced, or removed:
 See sheet #2 for description(s):

USED RECORD DIMENSIONS PER G/MAPS/1 O.R.P.C., FOUND MONUMENTS PER G/MAPS/1, J/MAPS/67 & 4/ROS/1 O.R.P.C., AND FOUND MONUMENTS OF NO RECORD IN ACCEPTED RECORD POSITION, TO REESTABLISH THE MISSING CORNER OF LOT 5, AS SHOWN ON THE ACCOMPANYING PLAT.

SURVEYOR'S STATEMENT

This Corner Record was prepared by me or under my direction in conformance with
 the Professional Land Surveyors' Act on April 09, 2021
 Signed Matthew S. Webb P.L.S. or R.C.E. No. 7429



COUNTY SURVEYOR'S STATEMENT

This Corner Record was received April 28, 2021
 and examined and filed June 25, 2021
 Signed Benjamin J. Bardakian PLS 8373
 Title Deputy County Surveyor
 County Surveyor's Statement



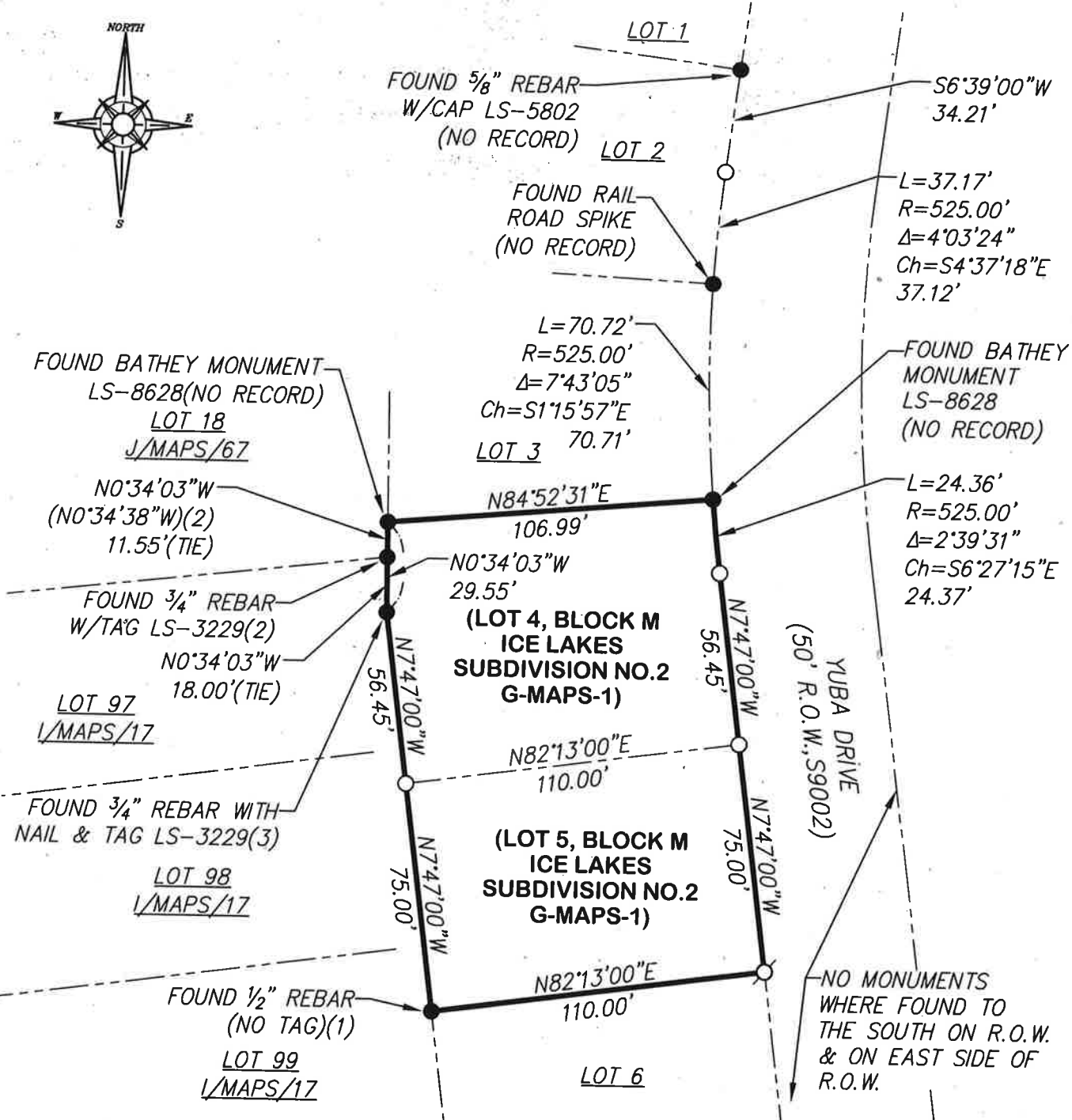
BOOK 23 CORNER RECORDS PAGE 97

PLAT OF SURVEY

LOTS 4 & 5, BLOCK M, ICE LAKES SUBDIVISION NO.2, AS FILED IN BOOK G OF MAPS AT PAGE 1, OFFICIAL RECORDS PLACER COUNTY, CALIFORNIA. A PORTION OF SECTION 27, TOWNSHIP 17 N., RANGE 14 E., M.D.B. & M.

SCALE 1" = 50'

DATE OF SURVEY 11/05/2020



BOOK 23 CORNER RECORDS PAGE 97

- FOUND MONUMENT AS NOTED HEREON
- DIMENSION POINT (NOTHING FOUND OR SET)
- ⊙ SET 5/8" REBAR WITH YELLOW PLASTIC CAP L.S. 7429
- (1) PER G/MAPS/1 (1/2" REBAR HISTORICALLY ACCEPTED AS RECORD MONUMENT)
- (2) PER J/MAPS/67
- (3) PER 4/ROS/1

NOTE: ALL BEARINGS AND DISTANCES SHOWN HEREON ARE RECORD PER G/MAPS/1 O.R.P.C.

J/N 3306.00