

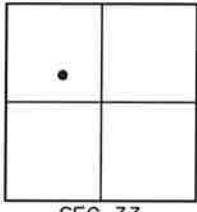
CORNER RECORD

Agency Index BK 23, PG 65

Document Number 20200105

City of _____ County of Placer, California

Brief Legal Description CENTERLINE MONUMENTS AS SHOWN ON I-MAPS-15, O.R.P.C.



SEC 33
T 16 N
R 17 E

CORNER TYPE

- Government Corner Control
 Meander Property
 Rancho Other

Date of Survey SEPTEMBER 30, 2020

COORDINATES (Optional)

N. _____ E. _____
 Elevation _____
 Units Metric U.S. Survey Foot
 Horizontal Datum _____
 Zone _____ Epoch Date _____
 Vertical Datum _____

- Complies with Public Resources Code §§8801-8819
 Complies with Public Resources Code §§8890-8902

PLS Act Ref.: 8765(d) 8771 8773 Other: _____

Corner/Monument: Left as found Established Rebuilt Pre-Construction
 Found and tagged Reestablished Referenced Post-Construction

Narrative of corner identified and monument as found, set, reset, replaced, or removed:

See sheet #2 for description(s):
 FOUND MONUMENTS, SHOWN ON "DOLLAR POINT UNIT NO.6" SUBDIVISION MAP, RECORDED IN BOOK I OF MAPS, PAGE 15, P.C.R.; FROM FOUND MONUMENTS, ESTABLISHED REFERENCE POINTS PRIOR TO NEW PAVEMENT OVERLAY; FROM REFERENCE POINTS, SET MAG NAIL W/ 1-1/4" BRASS TAG STAMPED "PLACER CO. SURVEYOR" CENTERED OVER THE FOUND MONUMENTS AFTER PAVEMENT OVERLAY.

SURVEYOR'S STATEMENT

This Corner Record was prepared by me or under my direction in conformance with the Professional Land Surveyors' Act on APRIL 6, 2021
 Signed [Signature] P.L.S. or R.C.E. No. 7941



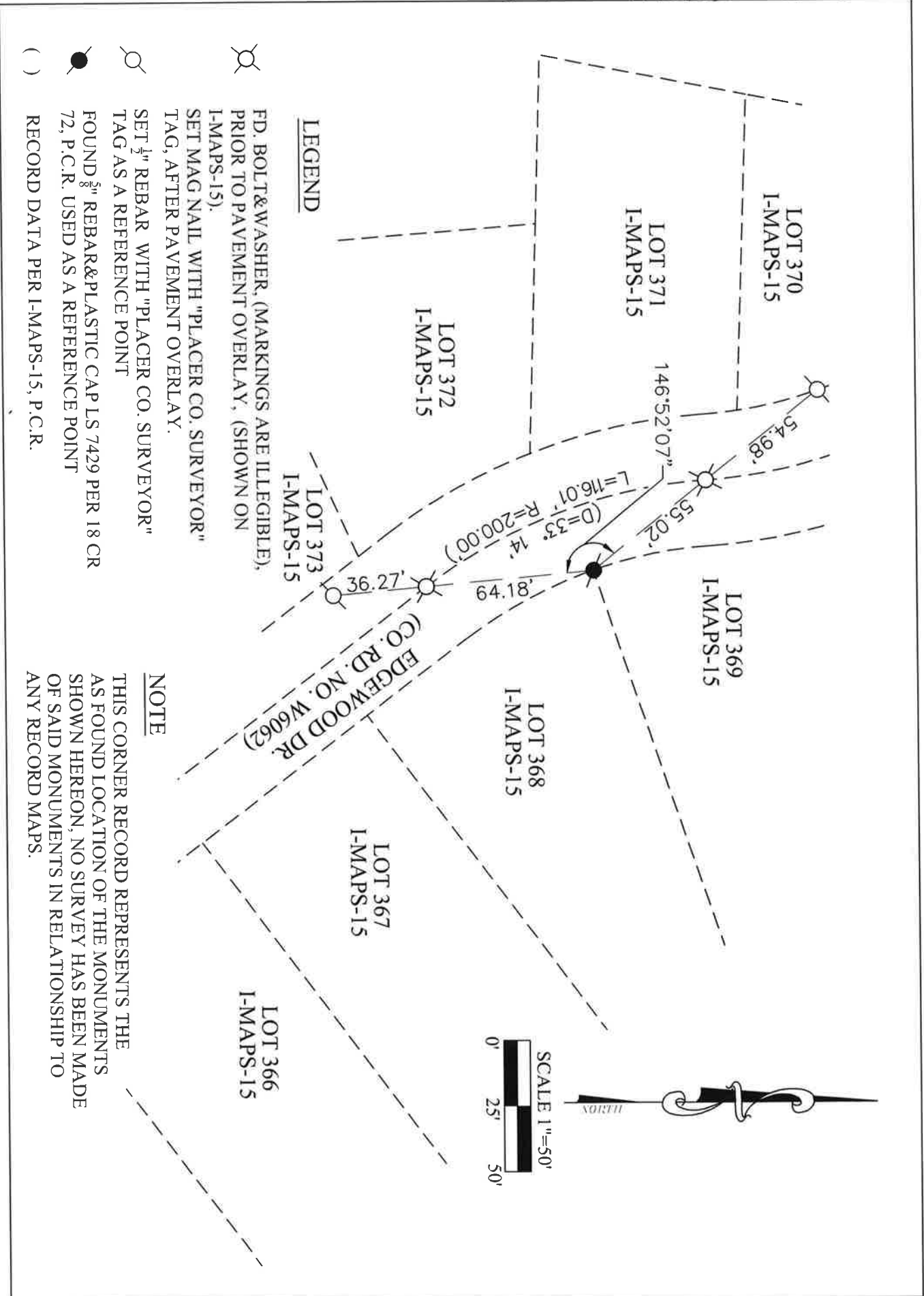
COUNTY SURVEYOR'S STATEMENT

This Corner Record was received APRIL 23, 2021
 and examined and filed JUNE 25, 2021
 Signed [Signature] P.L.S. or R.C.E. No. 8373
 Title DEPUTY COUNTY SURVEYOR



County Surveyor's Comment

BOOK 23 CORNER RECORDS PAGE 65



LEGEND

- ⊗ FD. BOLT & WASHER, (MARKINGS ARE ILLEGIBLE), PRIOR TO PAVEMENT OVERLAY, (SHOWN ON I-MAPS-15).
- ⊗ SET MAG NAIL WITH "PLACER CO. SURVEYOR" TAG, AFTER PAVEMENT OVERLAY.
- SET 1/2" REBAR WITH "PLACER CO. SURVEYOR" TAG AS A REFERENCE POINT
- FOUND 5/8" REBAR & PLASTIC CAP LS 7429 PER 18 CR 72, P.C.R. USED AS A REFERENCE POINT
- () RECORD DATA PER I-MAPS-15, P.C.R.

NOTE

THIS CORNER RECORD REPRESENTS THE AS FOUND LOCATION OF THE MONUMENTS SHOWN HEREON, NO SURVEY HAS BEEN MADE OF SAID MONUMENTS IN RELATIONSHIP TO ANY RECORD MAPS.