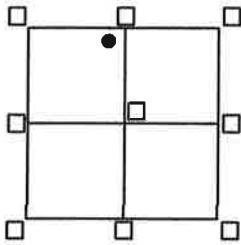


# CORNER RECORD

Agency Index BK 23 PG 69  
 Document Number 20200109

City of UNINCORPORATED County of PLACER, California

Brief Legal Description LOT 201 NORTHSTAR UNIT #6-A  
BOOK "K" OF MAPS PAGE 2 P.C.D.R.



**CORNER TYPE**  
 SEC. 32 Government Corner  Control   
 R. 17N. Meander  Property   
 R. 17E. Rancho  Other   
 M.D.M. Date of Survey 9/19/2020

**COORDINATES (Optional)**  
 N. \_\_\_\_\_ E. \_\_\_\_\_  
 Elevation \_\_\_\_\_  
 Units  Metric  U.S. Survey Foot  
 Horizontal Datum \_\_\_\_\_  
 Zone \_\_\_\_\_ Epoch Date \_\_\_\_\_  
 Vertical Datum \_\_\_\_\_  
 Complies with Public Resources Code 8801-8801  
 Complies with Public Resources Code 8890-8902

PLS Act Ref:  8765(d)  8771  8773  Other:

Corner/Monument:  Left as found  Established  Rebuilt  Pre-Construction  
 Found and tagged  Reestablished  Referenced  Post-Construction

Narrative of corner identified and monuments as found, set, reset, replaced, or moved:

See sheet #2 for description(s):

● = FOUND 5/8" REBAR W/ WIRED TAG L.S. 3383, BELIEVE TO BE ORIGINAL PER "K"/MAPS/2 P.C.D.R.

● = FOUND 5/8" REBAR, BELIEVE TO BE ORIGINAL PER "K"/MAPS/2 P.C.D.R., TAG MISSING

○ = SET BATHEY MONUMENT (T-BAR) W/ NAIL & TAG STAMPED P.L.S. 8628  
 JN:20063

### SURVEYOR'S STATEMENT

This Corner Record was prepared by me or under my direction in conformance with the Professional Land Surveyor's Act on NOVEMBER 21, 2020

Signed [Signature] PLS. or R.C.E. No. 8628  
LIC. EXP. 12/31/21



### COUNTY SURVEYOR'S STATEMENT

This Corner Record was received APRIL 7, 2021  
 and examined and filed APRIL 7, 2021

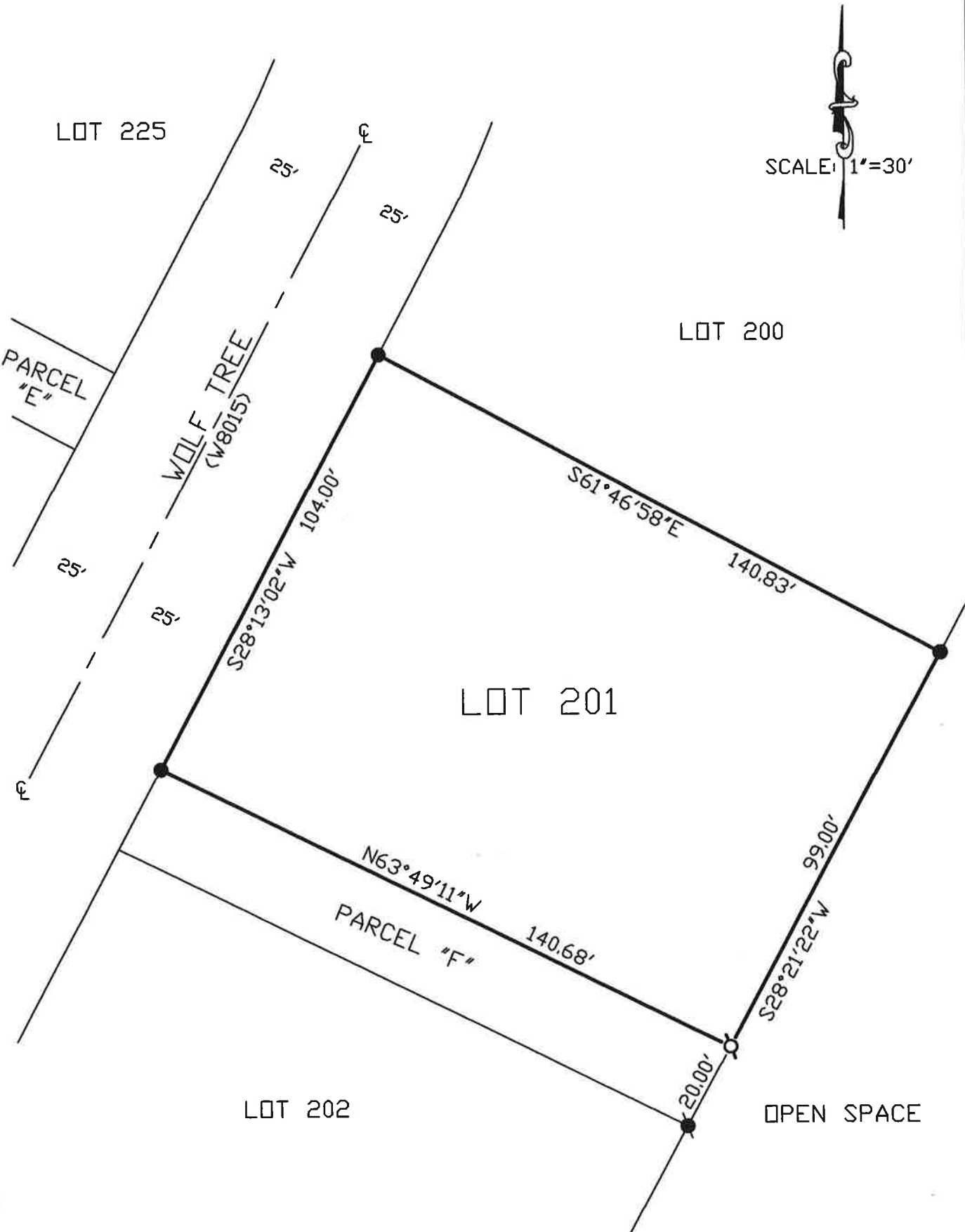
Signed [Signature] PLS. or R.C.E. No. 8373  
 Title Deputy County Surveyor

County Surveyor's Comment \_\_\_\_\_



Book 23 Corner Records Page 69

NOTE: THE BEARINGS AND DISTANCES SHOWN ARE RECORD PER "K"/MAPS/2 P.C.O.R. NO MATERIAL DISCREPANCIES WITH RECORD INFORMATION WERE FOUND.



Book 23 Corner Records Page 69