

CORNER RECORD

Agency Index BK 23 PG 81
 Document Number 20190053

City of _____ County of _____ Placer _____, California
 Brief Legal Description _____ Parcel 1 of Bk. 35, P.M. Pg. 122

S 28
 T11N
 R7E
 MDBM

CORNER TYPE

Government Corner Control
 Meander Property
 Rancho Other

Date of Survey June 7, 2018

COORDINATES (Optional)

N. _____ E. _____
 Elevation _____
 Units Metric U.S. Survey Foot
 Horizontal Datum _____
 Zone _____ Epoch Date _____
 Vertical Datum _____
 Complies with Public Resources Code §§8801-8819
 Complies with Public Resources Code §§8890-8902

PLS Act Ref.: 8765(d) 8771 8773 Other:
 Corner/Monument: Left as found Established Rebuilt Pre-Construction
 Found and tagged Reestablished Referenced Post-Construction

Narrative of corner identified and monument as found, set, reset, replaced, or removed:
 See sheet #2 for description(s):

Found monuments as referenced on 35 PM 122 and as indicated on sheet 2 herein as a pre-construction corner record.

SURVEYOR'S STATEMENT

This Corner Record was prepared by me or under my direction in conformance with the Professional Land Surveyors' Act on April 8, 2021
 Signed Thomas M. Price P.L.S. or R.C.E. No. 8920

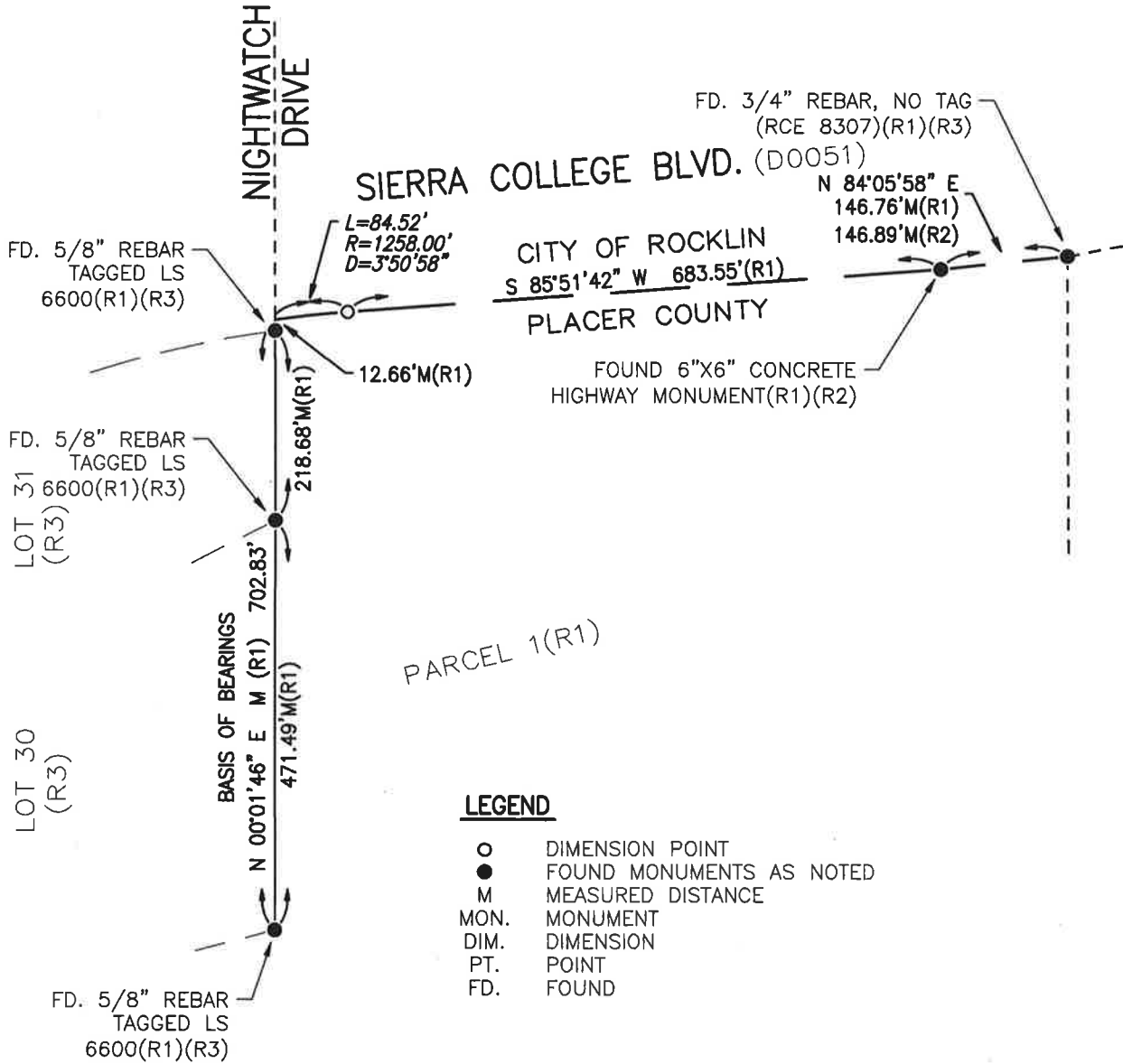
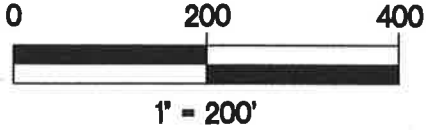


COUNTY SURVEYOR'S STATEMENT

This Corner Record was received APRIL 23, 2021
 and examined and filed JUNE 25, 2021
 Signed Benjamin J. Bardakian P.L.S. or R.C.E. No. 8373
 Title Deputy County Surveyor
 County Surveyor's Comment _____



BOOK 23 OF CORNER RECORDS PAGE 81



LEGEND

- DIMENSION POINT
- FOUND MONUMENTS AS NOTED
- M MEASURED DISTANCE
- MON. MONUMENT
- DIM. DIMENSION
- PT. POINT
- FD. FOUND

BASIS OF BEARINGS

THE BEARING OF NORTH 00°01'46" EAST, BETWEEN FOUND MONUMENTS, AS SHOWN ON (R1), WAS TAKEN AS THE BASIS OF ALL BEARINGS SHOWN ON THIS MAP.

REFERENCES

- (R1) RECORD DATA PER PARCEL MAP NO. ESD 15-00214, IN BOOK 35 OF PARCEL MAPS AT PAGE 122, P.C.R.
- (R2) RECORD DATA PER 9 SURVEYS 35, P.C.R.
- (R3) RECORD DATA PER Y MAPS 77, P.C.R.

BOOK 23 OF CORNER RECORDS PAGE 81