

CORNER RECORD

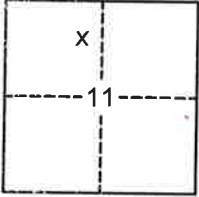
Agency Index BK 23 Pg 87
 Document Number 20200065

City of _____ County of PLACER, California

Brief Legal Description LOT 164, KINGSWOOD WEST SUBDIVISION; I/MAPS/73 O.R.P.C. PER 5/CR/73.

CORNER TYPE

COORDINATES (Optional)



SEC. 11
T. 16 N.
R. 17 E.
M.D.B. & M.

- Government Corner Control
 Meander Property
 Rancho Other

N. _____ E. _____
 Elevation _____
 Units Metric U.S. Survey Foot
 Horizontal Datum _____
 Zone _____ Epoch Date _____
 Vertical Datum _____

Date of Survey 9/10/2020

- Complies with Public Resources Code §§8801-8819
 Complies with Public Resources Code §§8890-8902

PLS Act Ref: 8765(d) 8771 8773 Other:

Corner/Monument: Left as found Established Rebuilt Pre-Construction
 Found and tagged Reestablished Referenced Post-Construction

Narrative of corner identified and monument as found, set, reset, replaced, or removed:
 See sheet #2 for description(s):

USED RECORD DIMENSIONS PER 5/CR/73 AND FOUND MONUMENTS PER I/MAPS/73 O.R.P.C. AND 5/CR/73 P.C.R. AND MONUMENTS OF NO RECORD ACCEPTED AS BEING IN RECORD POSITION EXCEPT THE MONUMENT FOUND NEAR THE MOST WESTERLY CORNER OF THE SURVEYED PARCEL WHICH WAS FOUND OUT OF POSITION AS REFLECTED ON 5/DR/73, TO REESTABLISH THE MISSING CORNER OF LOT 164, AS SHOWN ON THE ACCOMPANYING PLAT.

SURVEYOR'S STATEMENT

This Corner Record was prepared by me or under my direction in conformance with

the Professional Land Surveyors' Act on

April 09, 2021

Signed [Signature] P.L.S. or R.C.E. No. 7429



COUNTY SURVEYOR'S STATEMENT

This Corner Record was received April 28, 2021

and examined and filed JUNE 25, 2021

Signed [Signature] PLS 8373

Title Deputy County Surveyor

County Surveyor's Statement

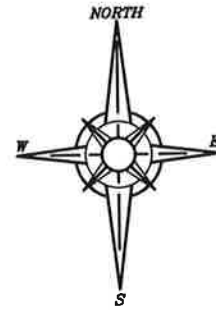


BOOK 23 CORNER RECORDS PAGE 87

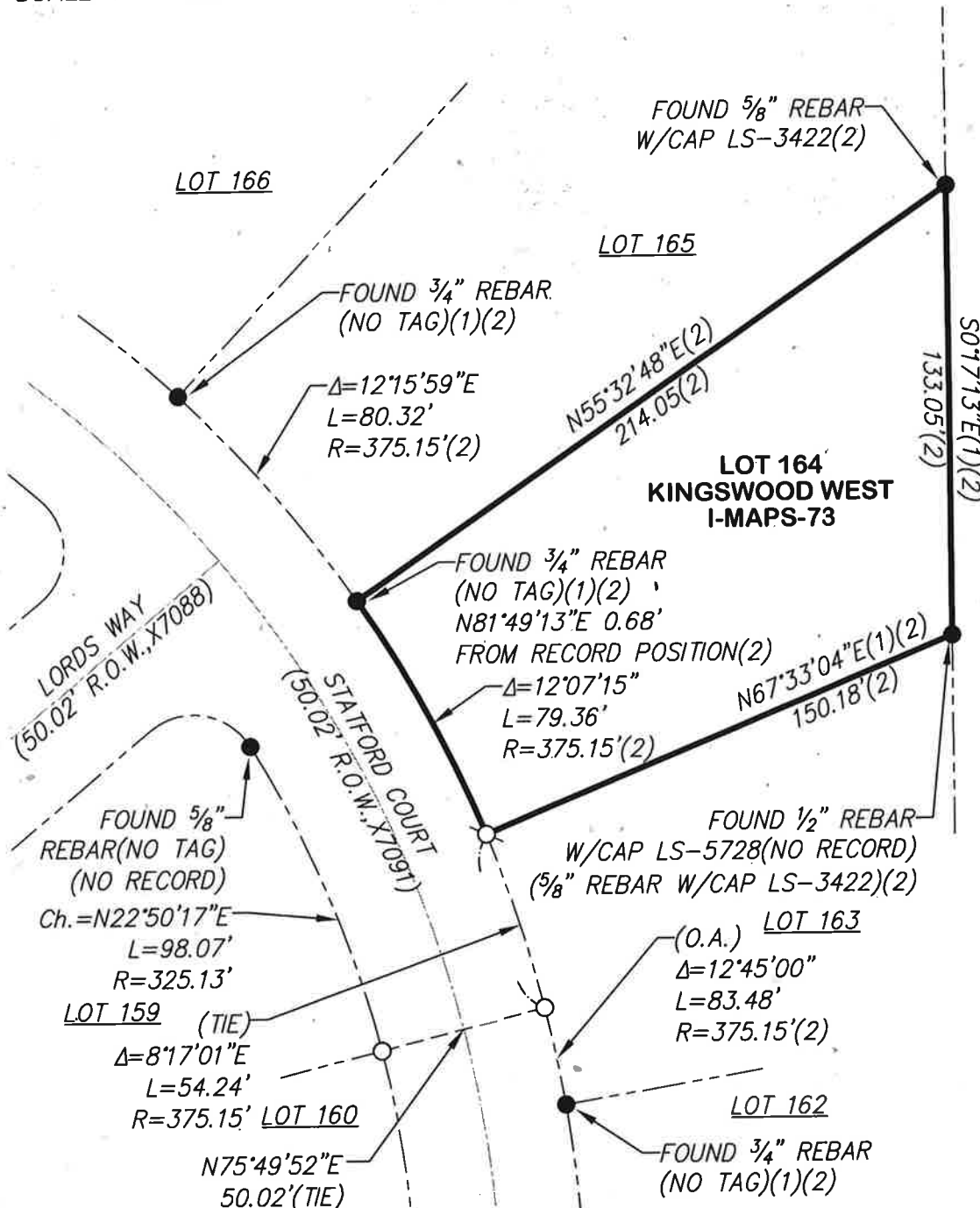
PLAT OF SURVEY

LOTS 164, KINGSWOOD WEST SUBDIVISION, AS FILED BOOK 1 OF MAPS AT PAGE 73, OFFICIAL RECORDS PLACER COUNTY, CALIFORNIA. A PORTION OF SECTION 11, TOWNSHIP 16 N., RANGE 17 E., M.D.B. & M.

SCALE 1" = 50' DATE OF SURVEY 9/10/2020



BOOK 23 CORNER RECORDS PAGE 87



NOTE: ALL DISTANCES SHOWN HEREON ARE GROUND DISTANCES:
 THE KINGSWOOD WEST SUBDIVISION MAP, IS GRID. TO OBTAIN GRID DISTANCES FROM GROUND DISTANCES SHOWN, DIVIDE THE GROUND DISTANCES BY 1.0004062.
 ALL BEARINGS AND DISTANCES SHOWN HEREON ARE RECORD PER I/MAPS/73, O.R.P.C.

- FOUND MONUMENT AS SHOWN HEREON
- DIMENSION POINT (NOTHING FOUND OR SET)
- ⊙ SET 5/8" REBAR WITH YELLOW PLASTIC CAP L.S. 7429
- (1) PER I/MAPS/73 (2) PER 5/CR/73