

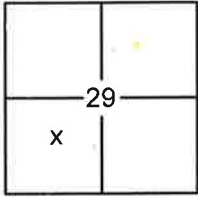
**CORNER RECORD**

Document Number 20160106

*8273 8098*

City of \_\_\_\_\_ County of PLACER, California

Brief Legal Description LOT 13, BLOCK P, SQUAW VALLEY ESTATES NO. 3 SUBDIVISION, E/MAPS/93 O.R.P.C.



SEC. 29  
T. 16 N.  
R. 16 E.  
M.D.B. & M.

**CORNER TYPE**

Government Corner  Control  
 Meander  Property  
 Rancho  Other  
 Date of Survey 11/15/2016

**COORDINATES (OPTIONAL)**

N. \_\_\_\_\_  
 E. \_\_\_\_\_  
 Zone \_\_\_\_\_ Datum \_\_\_\_\_  
 Elev. \_\_\_\_\_  
 Vert. Datum: NGVD29  NAVD88   
 Meas. Units: Metric  Imperial

**CORNER-** Left as Found  Found and Tagged  Established  Reestablished  Rebuilt

Identification and type of corner found: Evidence used to identify or procedure used to establish or reestablish the corner:

USED RECORD DIMENSIONS AND A FOUND MONUMENT PER E/MAPS/93 O.R.P.C., AND A MONUMENT OF NO RECORD IN RECORD POSITION TO REESTABLISH THE MISSING CORNER OF LOT 13, BLOCK P, AS SHOWN ON THE ACCOMPANYING PLAT.

A description of the physical condition of the monument as found and as set or reset:

- SET 5/8" REBAR WITH YELLOW PLASTIC CAP LS-7429 AS SHOWN ON PLAT
- FOUND MONUMENT AS SHOWN ON PLAT

**SURVEYOR'S STATEMENT**

This Corner Record was prepared by me or under my direction in conformance with the

Land Surveyors Act on April 09, 2021

Signed *Matthew S. Webb* P.L.S. or R.C.E. No. 7429



**COUNTY SURVEYOR'S STATEMENT**

This Corner Record was received APRIL 28, 2021

and examined and filed JUNE 25, 2021

Signed *Benjamin J. Bardakian* P.L.S. or R.C.E. No. 8373

Title Deputy County Surveyor



**COUNTY SURVEYOR'S COMMENT:**

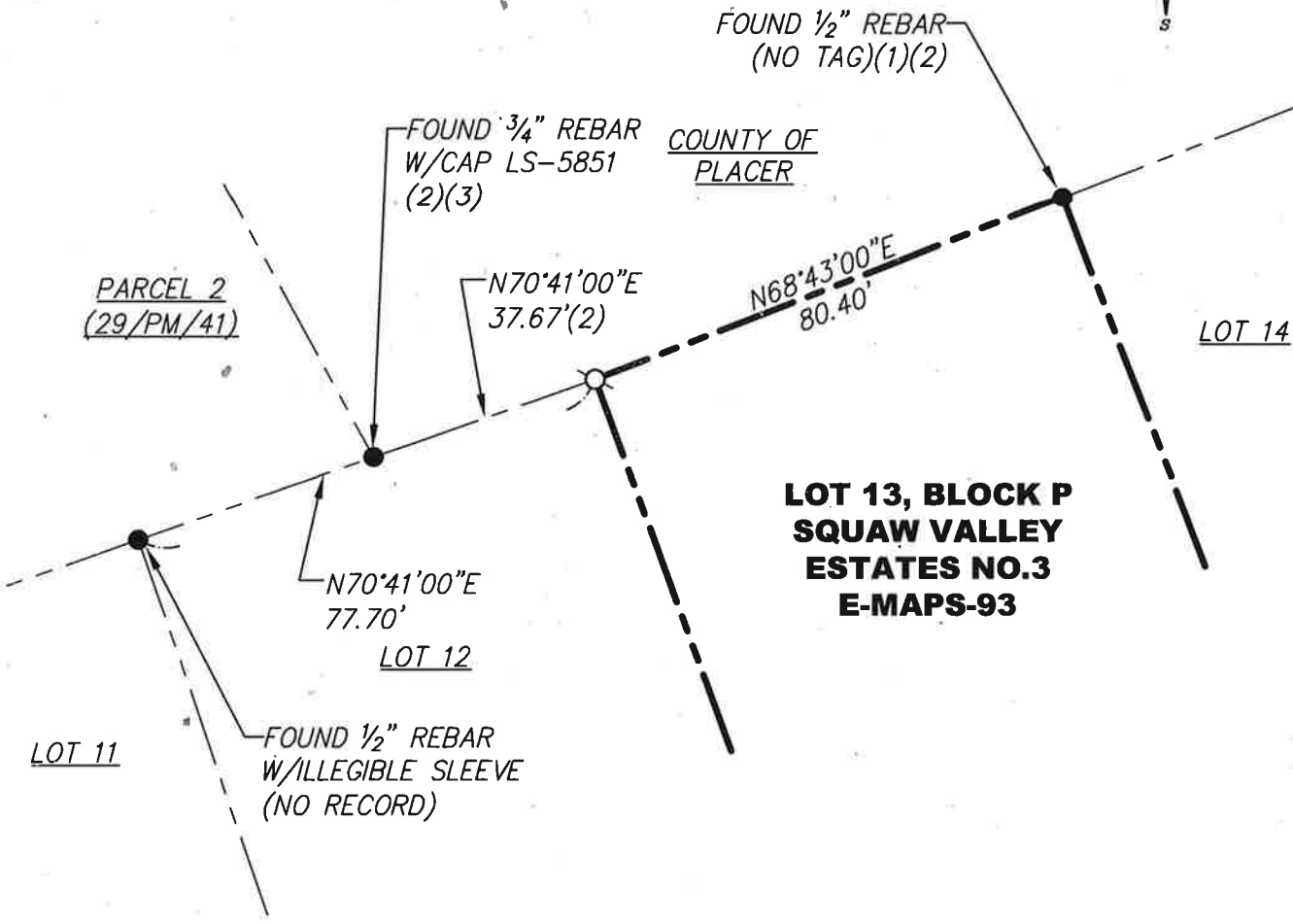
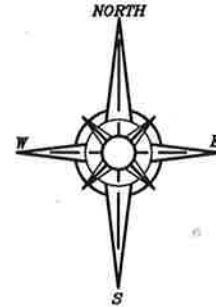
\_\_\_\_\_  
\_\_\_\_\_  
\_\_\_\_\_  
\_\_\_\_\_

BOOK 23 CORNER RECORDS PAGE 88

PLAT OF SURVEY

LOT 13, BLOCK P, SQUAW VALLEY ESTATES NO.3 SUBDIVISION, AS FILED IN BOOK E OF MAPS AT PAGE 93, OFFICIAL RECORDS PLACER COUNTY, CALIFORNIA. A PORTION OF SECTION 29, TOWNSHIP 16 N., RANGE 16 E., M.D.B. & M.

SCALE 1" = 30' DATE OF SURVEY 11/15/2016



BOOK 23 CORNER RECORDS PAGE 88

NOTE: ALL BEARINGS AND DISTANCES SHOWN HEREON ARE RECORD PER E/MAPS/93 O.R.P.C.

- FOUND MONUMENT AS SHOWN HEREON
- SET 5/8" REBAR WITH YELLOW PLASTIC CAP L.S. 7429 OR OTHERWISE NOTED
- (1) PER E/MAPS/93, 1/2" REBAR HAS BEEN ACCEPTED AS RECORD MONUMENTS BY LOCAL SURVEYORS HISTORICALLY AS THEY ARE FOUND EVERYWHERE
- (2) 14/ROS/84
- (3) 29/PM/41