

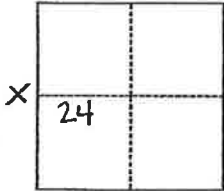
CORNER RECORD

Agency Index BK 24 PE 6
Document Number 20210036

City of _____ County of PLACER, California
Brief Legal Description MOSS OAKS UNIT 2 TRACT 363, L MAPS 10, LOT 9

CORNER TYPE

COORDINATES (Optional)



- Government Corner
- Meander
- Rancho
- Control
- Property
- Other

N. _____ E. _____
 Elevation _____
 Units Metric U.S. Survey Foot
 Horizontal Datum _____
 Zone _____ Epoch Date _____
 Vertical Datum _____
 Complies with Public Resources Code §§8801-8819
 Complies with Public Resources Code §§8890-8902

Date of Survey June 1, 2021

Section 24, T11N, R7E

- PLS Act Ref.: 8765(d) 8771 8773 Other: _____
- Corner/Monument: Left as found Established Rebuilt Pre-Construction
 Found and tagged Reestablished Referenced Post-Construction

Narrative of corner identified and monument as found, set, reset, replaced, or removed:

See sheet #2 for description(s):

Found Monuments are accepted as original per L Maps 10. Reestablished locations for the Southeast and the Southwest corners of Lot 9, set 3/4" capped rebar stamped LS 8891 at reestablished locations.

SURVEYOR'S STATEMENT

This Corner Record was prepared by me or under my direction in conformance with

the Professional Land Surveyors' Act on March 29, 2021

Signed Juanita Mathis P.L.S. or R.C.E. No. LS 8891



COUNTY SURVEYOR'S STATEMENT

This Corner Record was received July 12, 2021

and examined and filed July 12, 2021

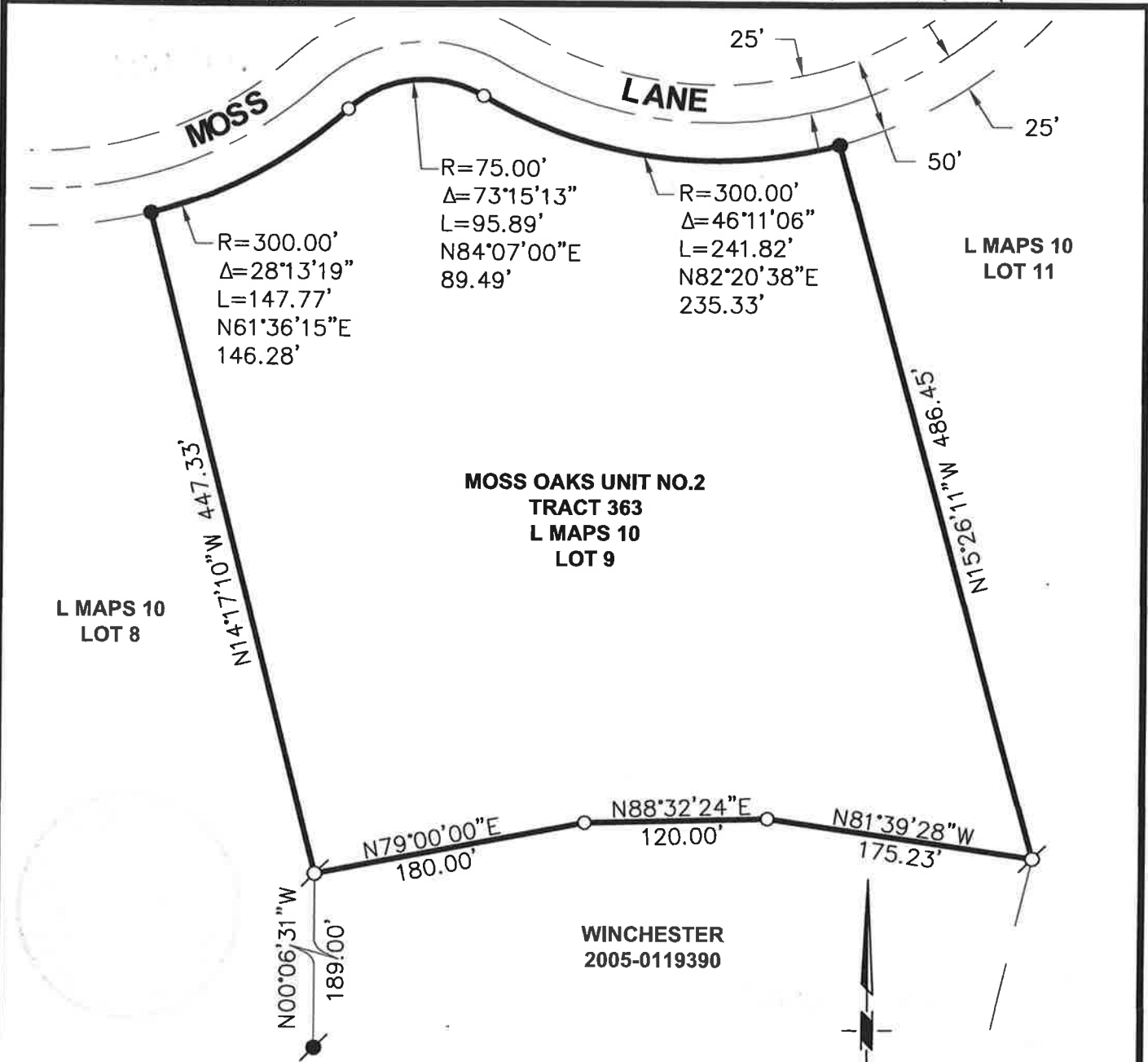
Signed Ben Barkan P.L.S. or R.C.E. No. 8373

Title Deputy County Surveyor

County Surveyor's Comment _____



BOOK 24 OF CORNER RECORDS PAGE 4



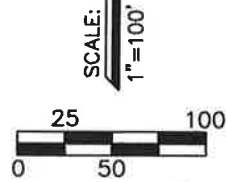
BOOK 24 CORNER RECORD PAGE 10

LEGEND

- SET 3/4" CAPPED REBAR STAMPED LS 8891
- FND 1" CAPPED IRON PIN STAMPED LS 2323
- FND 1/2" REBAR WITH CAP STAMPED LS 3423
- DIMENSION POINT NOTHING SET NOTHING FOUND

NOTE

ALL BEARINGS AND DISTANCES SHOWN HEREON ARE RECORD PER L MAPS 10 OFFICIAL RECORDS OF PLACER COUNTY AND MEASURED.



**POINTS PLOT
BUEFF**

A PORTION OF
SECTION 24, T11N, R7E, MDM
GRANITE BAY, PLACER COUNTY, CALIFORNIA
SCALE: 1"=100' JULY, 2021
MATHIS LAND SURVEYING
COOL CALIFORNIA
916-768-8984