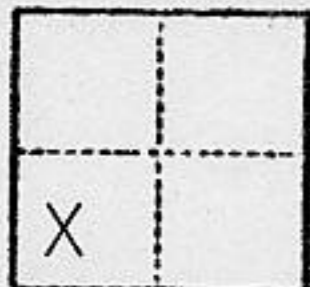


### CORNER RECORD

COUNTY OF Placer T. 10 N R. 7 E M.D.M. MERIDIAN CALIFORNIA

CORNER TYPE: GOVT. CORNER  MEANDER  RANCHO  CONTROL  OTHER

CORNER IDENTIFICATION — DATE OF VISIT \_\_\_\_\_ 19\_\_\_\_



portion of the southwest one-quarter of Section 8

CORNER — LEFT AS FOUND  FOUND AND TAGGED  REESTABLISHED OBLITERATED CORNER  REBUILT

PHYSICAL DESCRIPTION OF CORNER FOUND; EVIDENCE AND METHOD USED TO IDENTIFY OR REESTABLISH

Found center line monuments - copperweld survey marker stamped L.S. 3923 in standard City of Roseville monument box as shown on the plat of "Huntington Oaks Unit No. 4" - Book M of Maps, Page 62.

PHYSICAL DESCRIPTION OF MONUMENTS REBUILT OR PERPETUATED LEGEND:

- ⊗ Set No. 5 rebar with tag stamped L.S. 4900 LHT
- ⊗ Set nail in concrete with tag stamped L.S. 4900 LHT
- ⊙ Cut "X" in concrete
- Found 3/4" I.P. with cap stamped L.S. 3923
- Found copperweld survey marker stamped L.S. 3923

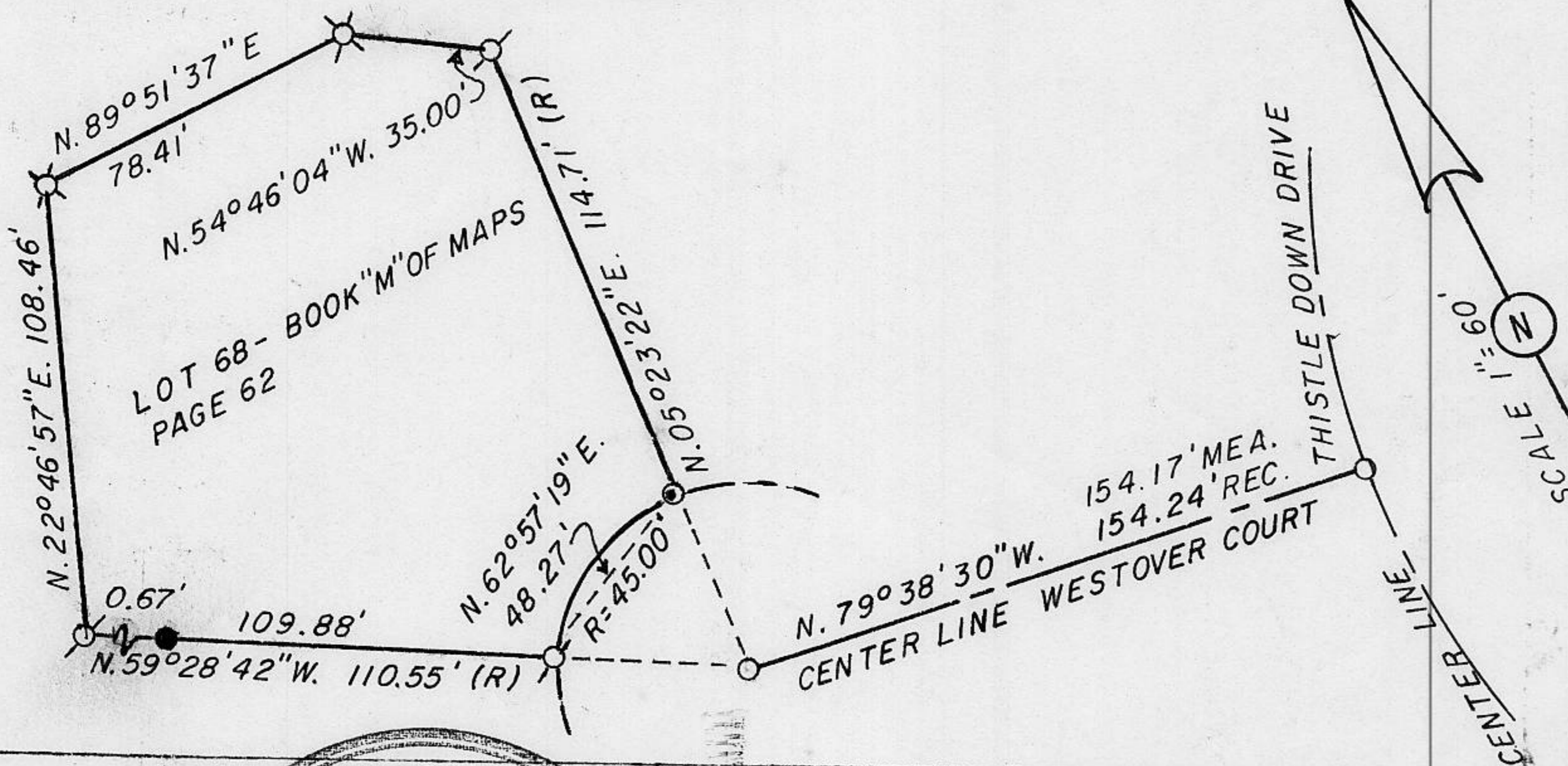
CALIFORNIA COORDINATE SYSTEM ORDER: FIRST  SECOND  THIRD

STATIONS USED: NGS (USC & GS)  STATE  COUNTY  OTHER  STATION \_\_\_\_\_ STATION \_\_\_\_\_

ZONE \_\_\_\_\_ ELEVATION \_\_\_\_\_ NORTHINGS (Y) \_\_\_\_\_ EASTINGS (X) \_\_\_\_\_

(Fold)

SKETCH: (Include reference tie or witness points, remarks and topo of area)



SURVEYOR'S CERTIFICATE  
 THIS CORNER RECORD WAS PREPARED BY ME OR UNDER MY DIRECTION IN CONFORMANCE WITH THE LAND SURVEYORS ACT ON 7-22-87

SIGNED: Lawrence H. Turner  
 L.S. or other No. 4900



COUNTY SURVEYOR'S CERTIFICATE  
 THE CORNER RECORD WAS RECEIVED July 24 19 87  
 AND EXAMINED AND FILED July 29 19 87  
 BY: Barry J. McDaniel  
 TITLE: DEPUTY COUNTY SURVEYOR

DOCUMENT No. \_\_\_\_\_  
 STATEMENT ON BACK OF SHEET YES  NO

Book 1, Corner Records, Page 117  
BOOK 3 CORNER RECORDS PAGE 158