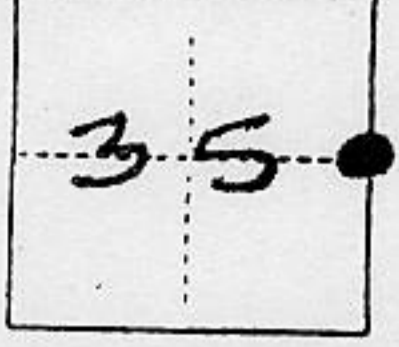


# CORNER RECORD

COUNTY OF PLACER T. 11N R. 6E M.D. M.D. MERIDIAN CALIFORNIA  
 CORNER TYPE: GOVT. CORNER  MEANDER  RANCHO  CONTROL  OTHER   
 CORNER IDENTIFICATION — DATE OF VISIT JAN. 1990



CORNER — LEFT AS FOUND  FOUND AND TAGGED  REESTABLISHED OBLITERATED CORNER  REBUILT

PHYSICAL DESCRIPTION OF CORNER FOUND; EVIDENCE AND METHOD USED TO IDENTIFY OR REESTABLISH  
 FOUND 2" O.D. IRON PIPE & TAG, LS 2217. ACCEPTED AS 1/4 CORNER. (SEE RECORD OF SURVEY BK. 6/Pg. 139)

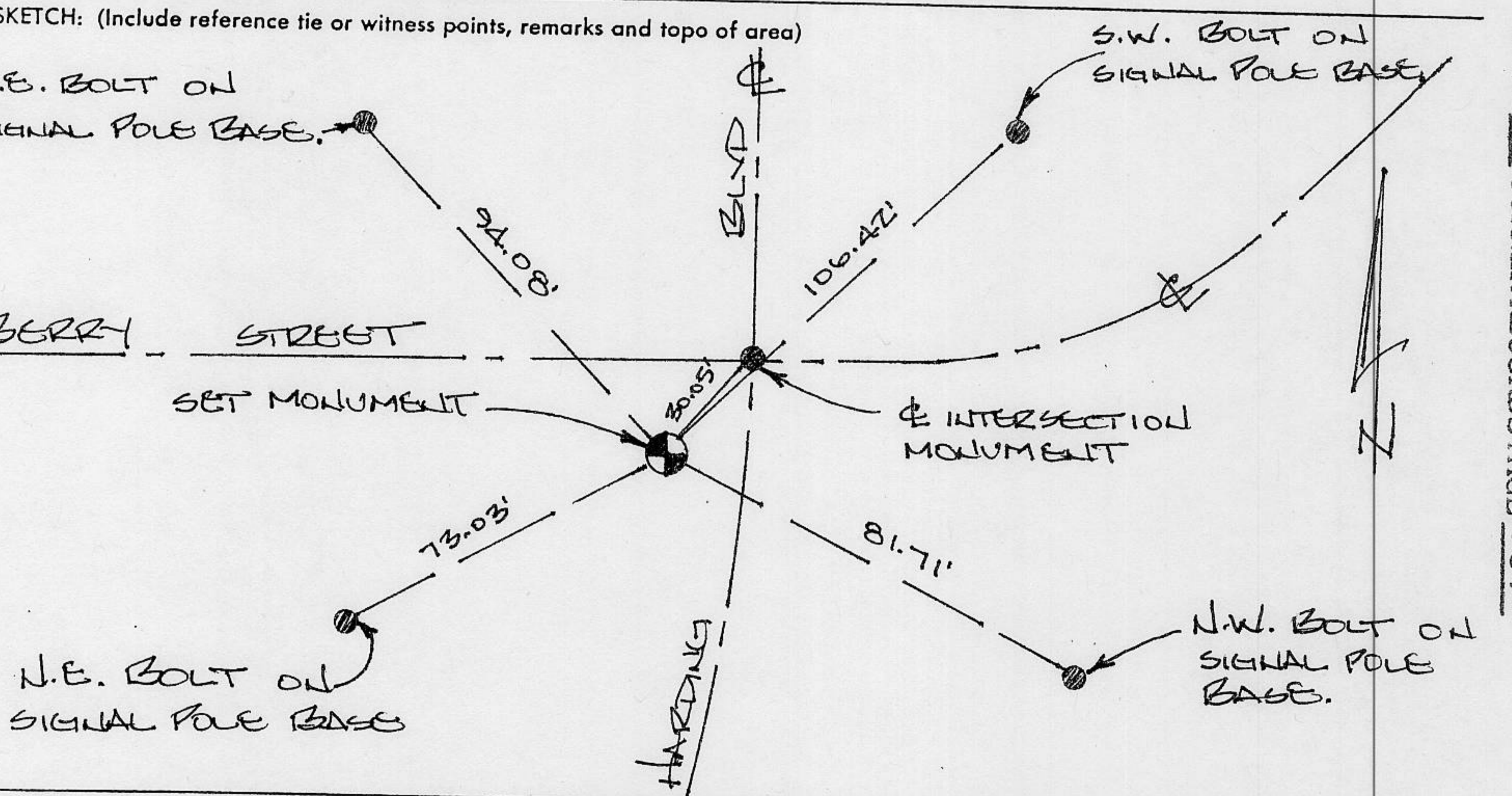
PHYSICAL DESCRIPTION OF MONUMENTS REBUILT OR PERPETUATED  
 SET 5/8" REBAR WITH ALUMINUM CAP, IN ASPHALT @ HARDING BLVD. STATION 24+87.08, 14.45' LEFT.

STAMPED:



CALIFORNIA COORDINATE SYSTEM ORDER: FIRST  SECOND  THIRD  CALTRANS CONTROL - MAY 65  
 STATIONS USED: NGS (USC & GS)  STATE  COUNTY  OTHER  STATION P-1-4-5 STATION S.P. TOWER  
 ZONE II ELEVATION \_\_\_\_\_ NORTHINGS (Y) 398,809.64 EASTINGS (X) 2,209,654.01

(Fold)



BOOK 3 CORNER RECORDS PAGE 164

**SURVEYOR'S CERTIFICATE**  
 THIS CORNER RECORD WAS PREPARED BY ME OR UNDER MY DIRECTION IN CONFORMANCE WITH THE LAND SURVEYORS ACT ON April 24 1993  
 SIGNED: [Signature]  
 L.S. or R.C.E. No.: 4796

**COUNTY SURVEYOR'S CERTIFICATE**  
 THE CORNER RECORD WAS RECEIVED 5/19 1993  
 AND EXAMINED AND FILED 5/20 1993  
 BY: [Signature]  
 TITLE: DEPUTY COUNTY SURVEYOR  
 DOCUMENT No. \_\_\_\_\_  
 STATEMENT ON BACK OF SHEET YES  NO