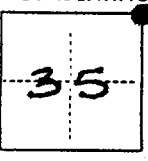


CORNER RECORD

COUNTY OF PLACER T. 11 N R. 6 E M.D. M.D. MERIDIAN CALIFORNIA

CORNER TYPE: GOVT. CORNER  MEANDER  RANCHO  CONTROL  OTHER

CORNER IDENTIFICATION — DATE OF VISIT MARCH 19 88



CORNER — LEFT AS FOUND  FOUND AND TAGGED  REESTABLISHED OBLITERATED CORNER  REBUILT

PHYSICAL DESCRIPTION OF CORNER FOUND; EVIDENCE AND METHOD USED TO IDENTIFY OR REESTABLISH

FOUND 2 1/2" SQUARE ALUMINUM PLATE. STAMPED: ~~STATE~~  
 (SEE RECORD OF SURVEY, BK. 6/Pa. 139)

T11N R6E	
FEB 1977	
26	25
35	36
LS 3378	

PHYSICAL DESCRIPTION OF MONUMENTS REBUILT OR PERPETUATED

SET 5/8" REBAR WITH ALUMINUM CAP, DOWN 6"  
 IN CONCRETE, IN MONUMENT WELL @  
 HARDING BLVD. @ STATION 51+42.01.

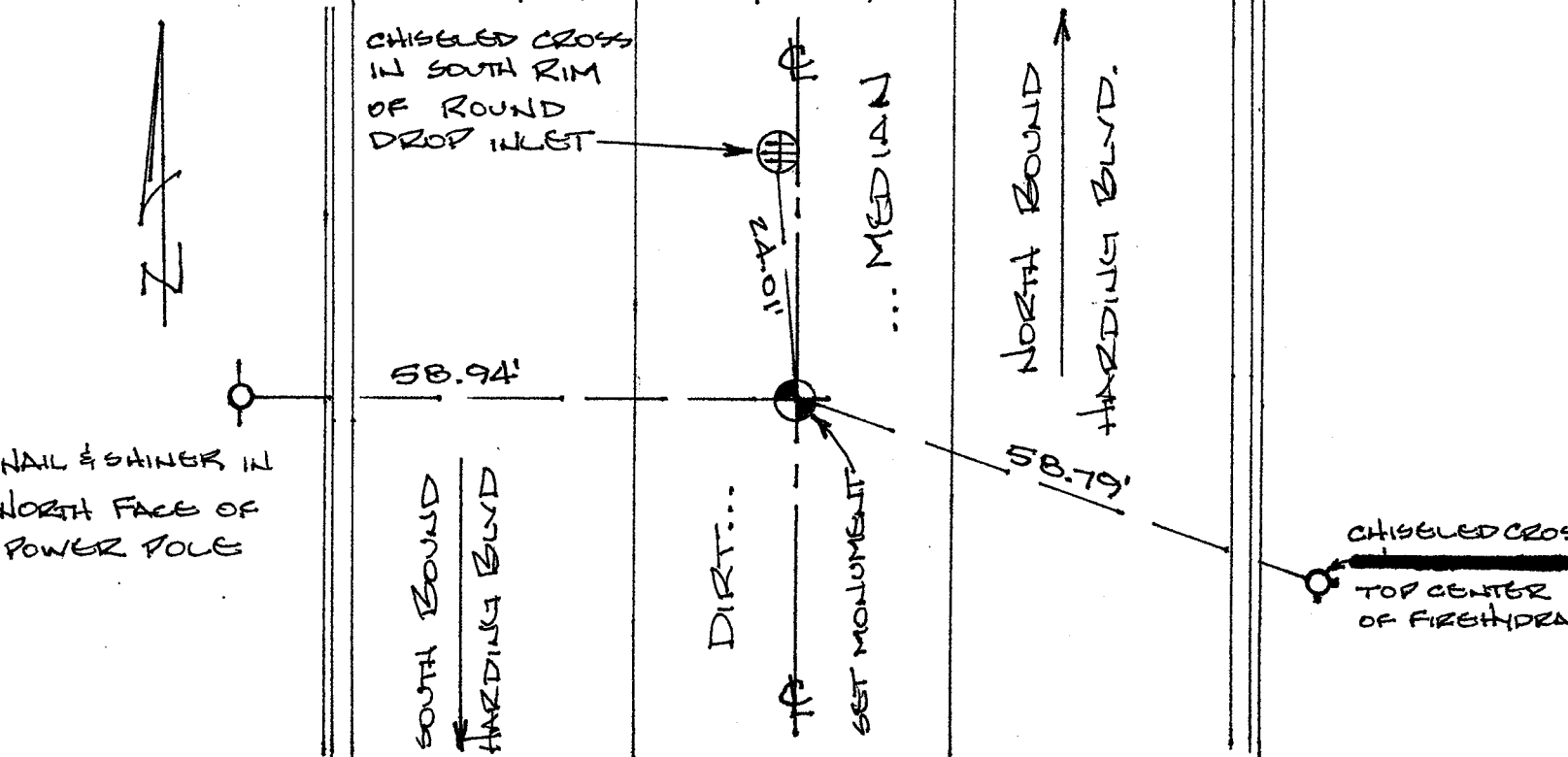
STAMPED:



CALIFORNIA COORDINATE SYSTEM ORDER: FIRST  SECOND  THIRD  CALTRANS CONTROL - HWY 65  
 STATIONS USED: NGS (USC & GS)  STATE  COUNTY  OTHER  STATION P-1-A-5 STATION S.P. TOWER  
 ZONE II ELEVATION \_\_\_\_\_ NORTHINGS (Y) 401,464.10 EASTINGS (X) 2,209,644.69

(Fold)

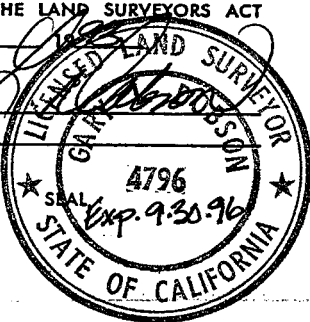
SKETCH: (Include reference tie or witness points, remarks and topo of area)



SURVEYOR'S CERTIFICATE

THIS CORNER RECORD WAS PREPARED BY ME OR UNDER MY DIRECTION IN CONFORMANCE WITH THE LAND SURVEYORS ACT ON April 21

SIGNED: [Signature]  
 L.S. or R.C.E. No.: 4796



COUNTY SURVEYOR'S CERTIFICATE

THE CORNER RECORD WAS RECEIVED 5/19 1993 AND EXAMINED AND FILED 5/20 1993

BY: [Signature]  
 TITLE: DEPUTY COUNTY SURVEYOR

DOCUMENT No. \_\_\_\_\_

STATEMENT ON BACK OF SHEET

YES  NO