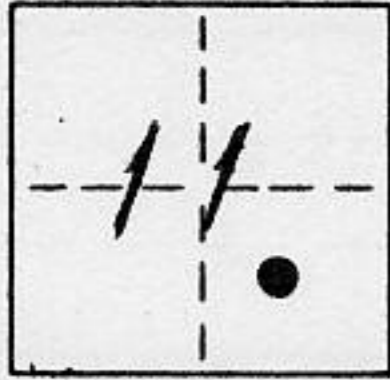


CORNER RECORD

COUNTY OF PLACER T. 16 N. R. 17 E. M.D.B. MERIDIAN CALIFORNIA
 CORNER TYPE: GOV'T. CORNER MEANDER RANCHO CONTROL OTHER
 CORNER IDENTIFICATION - DATE OF VISIT 4-21 1993



LOT 14, NORTHLAKE SUBDIVISION, BOOK "F" PAGE 50

CORNER - LEFT AS FOUND FOUND AND TAGGED REESTABLISHED OBLITERATED CORNER REBUILT

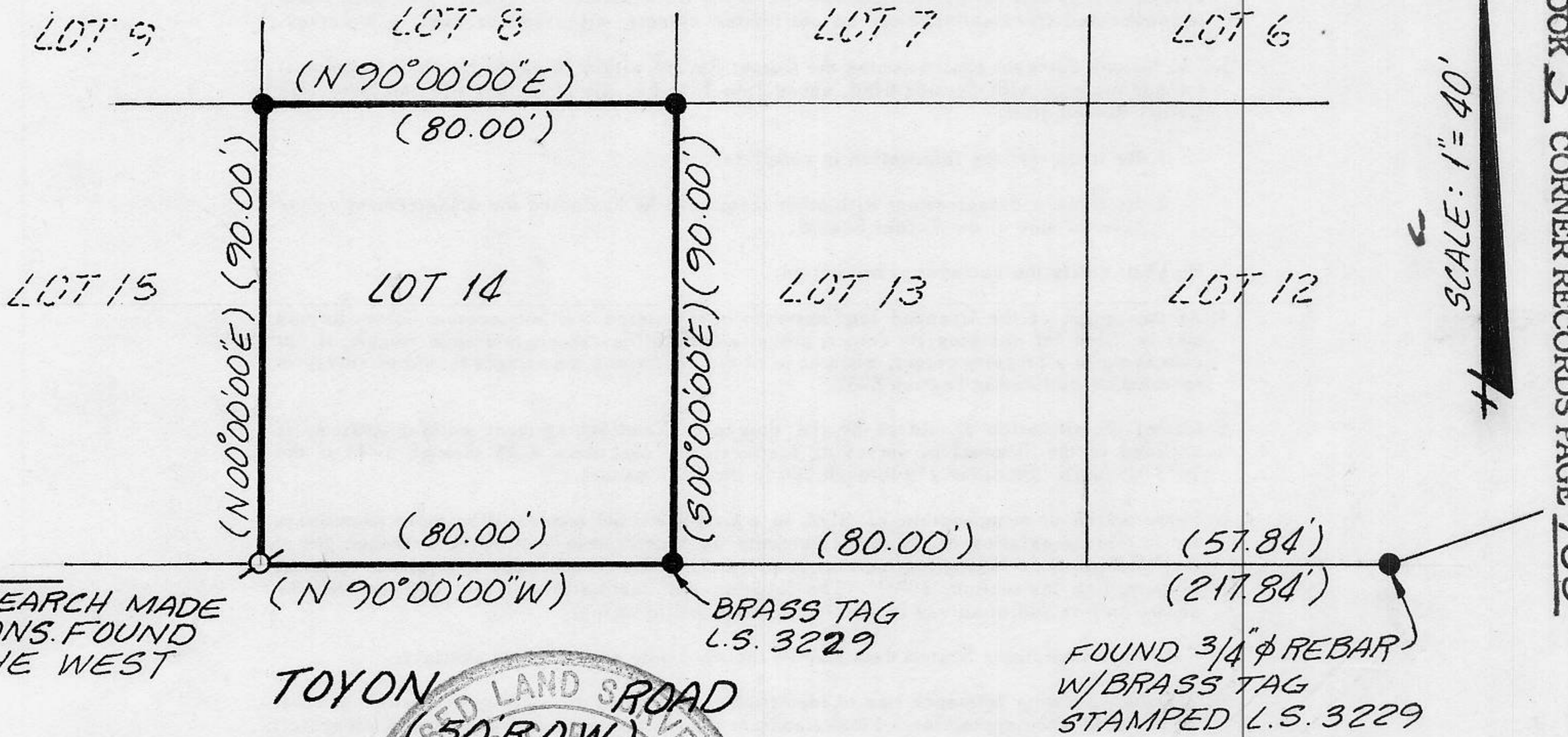
PHYSICAL DESCRIPTION OF CORNER FOUND: EVIDENCE AND METHOD USED TO IDENTIFY OR REESTABLISH _____

● ~ FOUND 1/2" φ REBAR, NO TAG, UNLESS OTHERWISE NOTED.

PHYSICAL DESCRIPTION OF MONUMENTS REBUILT OR PERPETUATED _____

⊙ ~ SET 5/8" φ REBAR WITH METAL CAP STAMPED L.S. 5886

CALIFORNIA COORDINATE SYSTEM ORDER: FIRST SECOND THIRD N/A
 STATIONS USED: NGS (USC & GS) STATE COUNTY OTHER STATION _____ STATION _____
 ZONE _____ ELEVATION _____ NORTHINGS (Y) _____ EASTINGS (X) _____



BOOK 3 CORNER RECORDS PAGE 166

TOYON ROAD
(50' ROW)

SURVEYOR'S CERTIFICATE

THIS CORNER RECORD WAS PREPARED BY ME OR UNDER MY DIRECTION IN CONFORMANCE WITH THE LAND SURVEYORS ACT ON 4-23 1993

SIGNED: _____

L.S. or R.C.E. No.: L.S. 5886



SEAL

COUNTY SURVEYOR'S CERTIFICATE

THIS CORNER RECORD WAS RECEIVED 5/19 1993 AND EXAMINED AND FILED 5/20 1993

BY: John Rubens
TITLE: DEPUTY COUNTY SURVEYOR

DOCUMENT No. _____

STATEMENT ON BACK OF SHEET

YES NO