

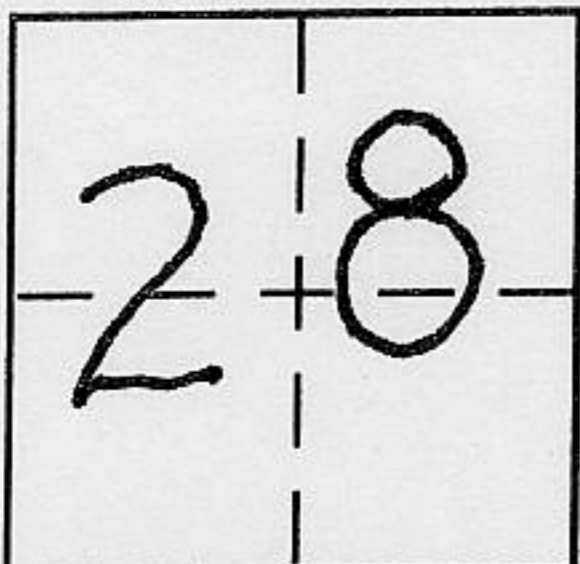
CORNER RECORD

Document Number _____

City of _____

County of PLACER, California

Brief Legal Description LOT 8, BLOCK 8, CEDAR FLAT. SUB. H/MAPS/6Z ORPL



CORNER TYPE

T.I.B.N. Government Corner Control
 Meander Property
 R.I.T.E. Rancho Other
 Date of Survey JUNE 06, 2000

COORDINATES (Optional)

~~N
E
Zone _____ NAD27 NAD83
 NAD83 Epoch _____
 Elev. _____
 Vert. Datum: NGVD29 NAVD88
 Meas. Units: Metric Imperial~~

Corner - Left as found Found and tagged Established Reestablished Rebuilt

Identification and type of corner found: Evidence used to identify or procedure used to establish or reestablish the corner:

SEE SKETCH ON BACK

A description of the physical condition of the monument as found and as set or reset:

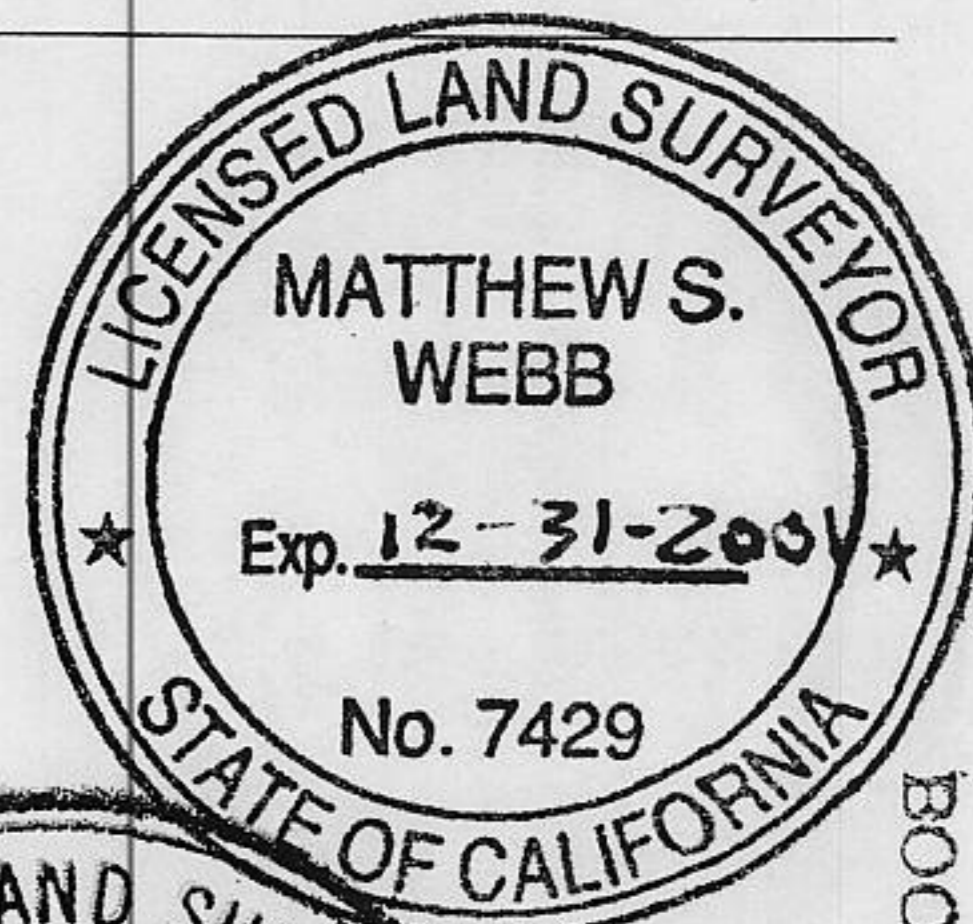
SEE SKETCH ON BACK

SURVEYOR'S STATEMENT

This Corner Record was prepared by me or under my direction in conformance with

the Land Surveyor's Act on JUNE 09 2000

Signed Matthew S Webb P.L.S or R.C.E. No. 7429



COUNTY SURVEYOR'S STATEMENT

This Corner Record was received JANUARY 20, 2001

and examined and filed MARCH 23, 2001

Signed David DeLynn P.L.S or R.C.E. No. 4323

Title COUNTY SURVEYOR

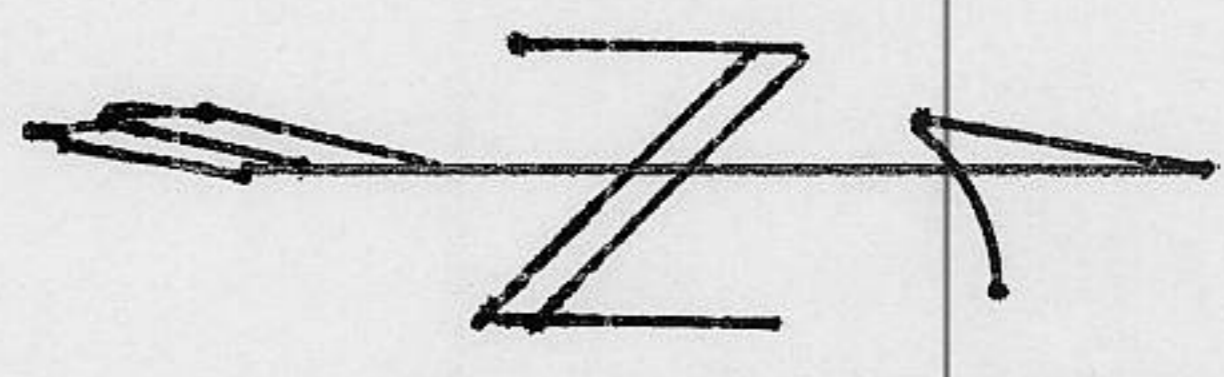


County Surveyor's Comment _____

BOOK 6 CORNER RECORDS PAGE 91

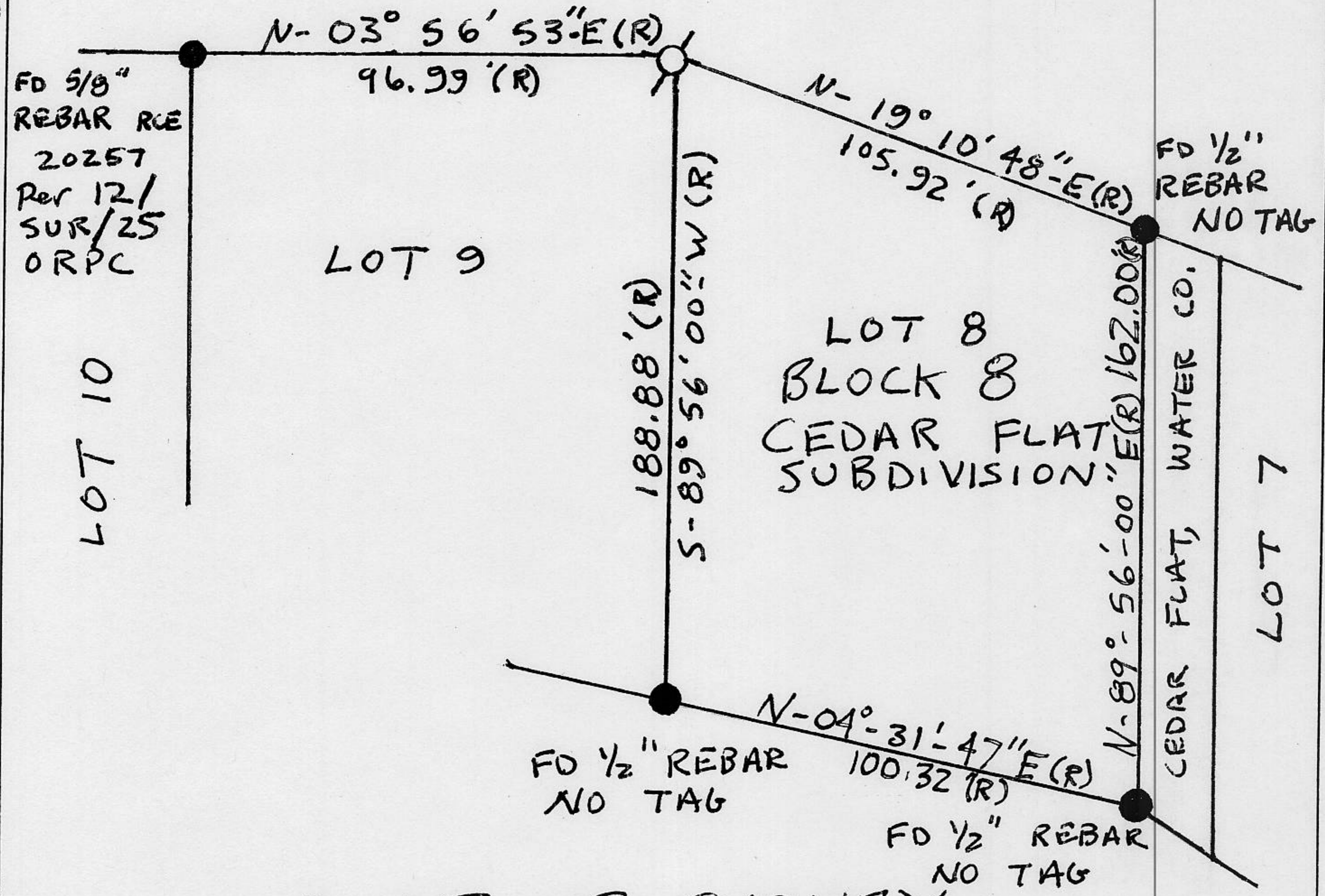
(R) RECORD PER H/MAPS/82
O.R.P.C.

⊙ SET 5/8" REBAR W/
PLASTIC CAP L.S. 7429



NOT TO SCALE

STATE HWY. No. 28



PLAT OF SURVEY

LOT 8 BLOCK 8, CEDAR FLAT SUB.
BOOK H, MAPS PAGE 82 O.R.P.C.
SECTION 28, T16 N. R. 17 E. MDB&M.
PLACER COUNTY, CALIFORNIA.

J/N 122.00