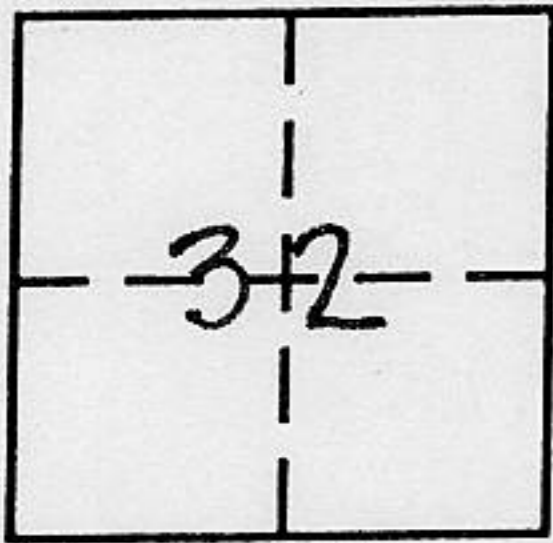


CORNER RECORD

COUNTY OF PLACER, CALIFORNIA

City of _____ Document Number _____

Brief Legal Description P.U.E. #1 & #3 - N MAPS 60, P.C.R.



T16N
R16E

CORNER TYPE

- Government Corner
- Meander
- Rancho
- Date of Survey 8/00
- Control
- Property
- Other

COORDINATES
(Optional)

N. _____
 E. _____
 Zone _____ Datum _____
 Elev. _____

Corner — Left as found Found and tagged Established Reestablished Rebuilt

Identification and type of corner found: Evidence used to identify or procedure used to establish or reestablish corner:

Located North line Sec 32, T16N R16E, MDM. Used record ties to easement corners to establish location

A description of the physical condition of the monument as found and as set or reset: Set railroad spikes at four corners of each easement. No corners found.

SURVEYOR'S STATEMENT

This Corner Record was prepared by me or under my direction in conformance with the Land

Surveyors' Act on Oct 11 192000

Signed Chm Johnson L.S. or R.C.E. Number 60596

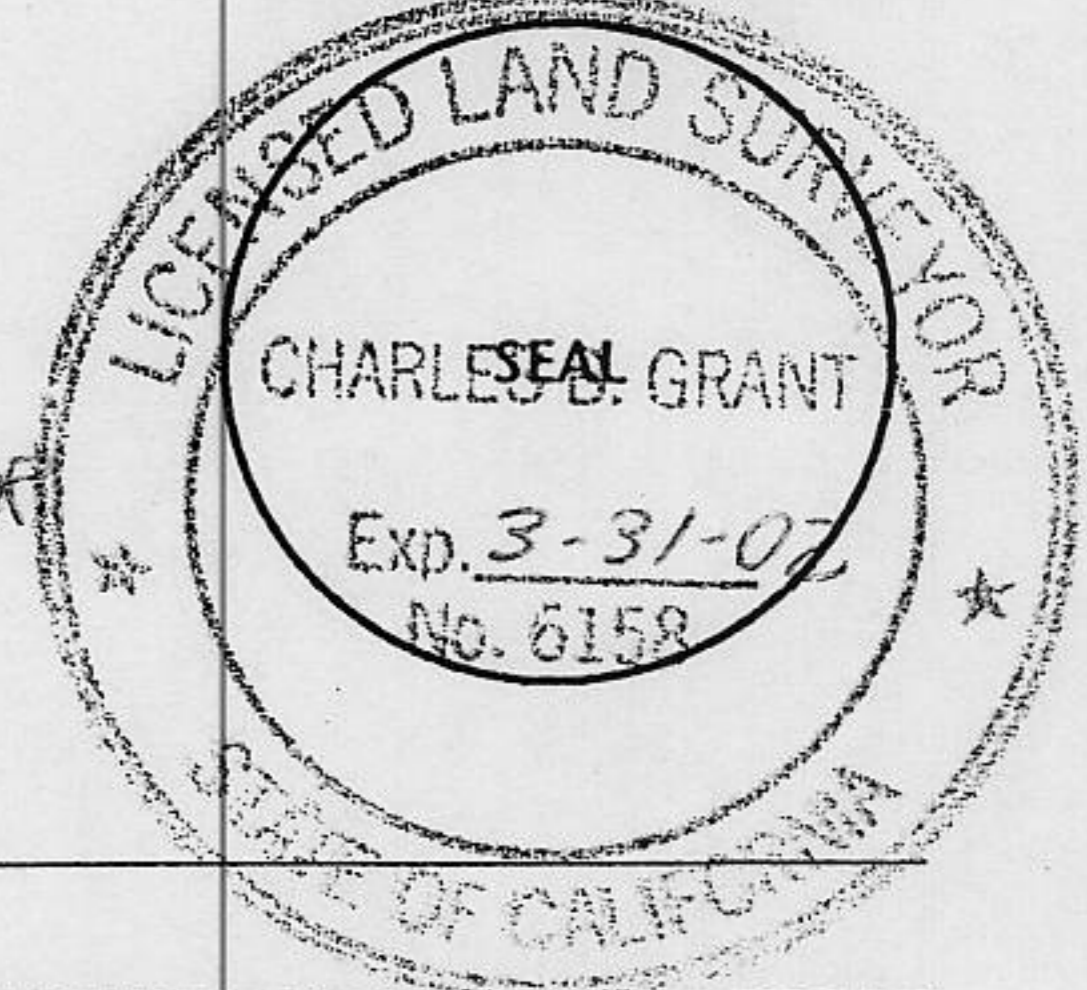
COUNTY SURVEYOR'S STATEMENT

This Corner Record was received JANUARY 3 2001 1901 and examined

and filed JANUARY 3 2001 1901

Signed Charles Grant Title DEPUTY COUNTY SURVEYOR

County Surveyor's Comment _____



BOOK 6 CORNER RECORDS PAGE 83

30 29
31 32

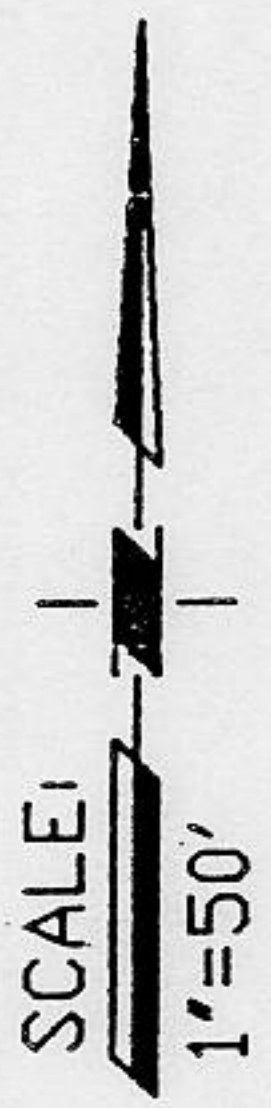
N88°45'47"E (1318.75)R 1318.53M

W 1/16th COR. 4" BRASS DISK STAMPED:

T16N R16E
W1/16 S29 S32
R.C.E. 20257

3" ALUM. CAP SET IN CONCRETE STAMPED:

T16N R16E
S30 S29 S31 S32
1983
R.C.E. 20257

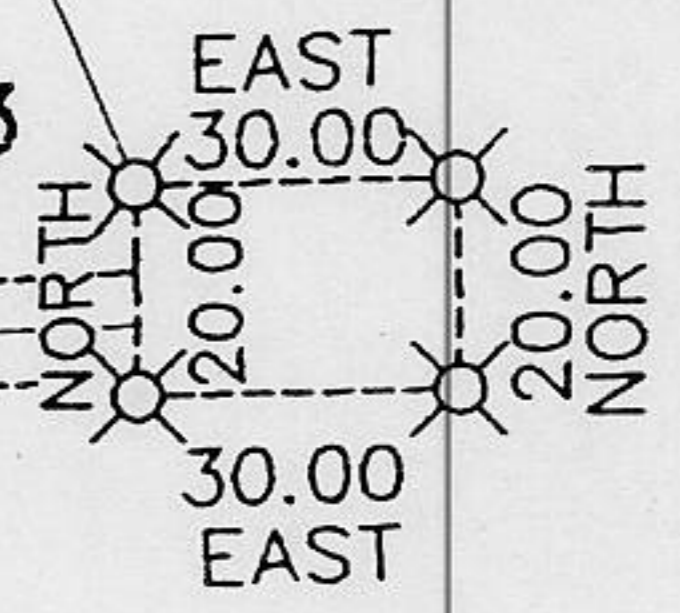


SQUAW LOOP ROAD

TIE: N16°22'55"W 501.91

WELL#3

10' PUE "J1"



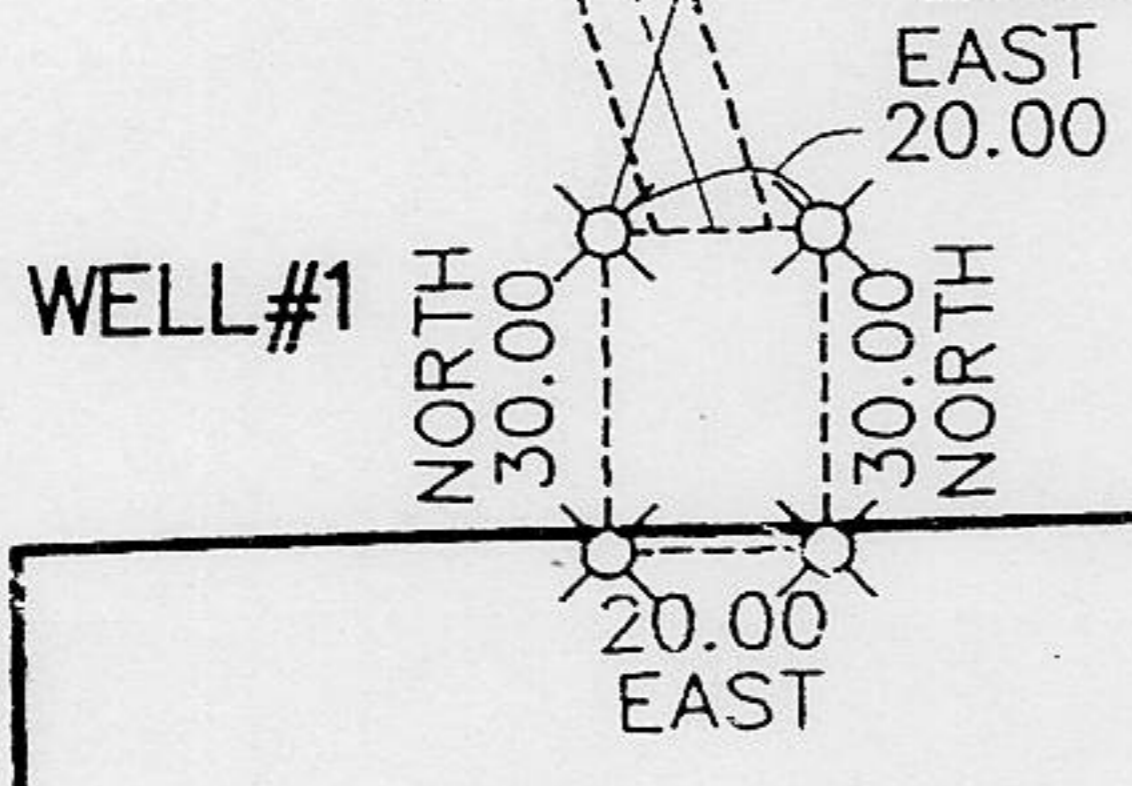
TIE: N02°10'03"E 752.07

BUILDING

LOT 4
N MAPS 60

LOT 1
N MAPS 60

10' PUE "J2"



LOT 5
N MAPS 60

Q MAPS 75

⊗ — SET RAILROAD SPIKE STAMPED LS 6596 @ EASEMENT CORNER

11169CR

BOOK 6 CORNER RECORDS PAGE 83