

CORNER RECORD

COUNTY OF PLACER, CALIFORNIA

City of UNINCORPORATED AREA, PLACER CO. Document Number \_\_\_\_\_

Brief Legal Description REMONUMENTATION OF PM 15/09



T12N  
R8E

CORNER TYPE

- Government Corner
- Meander
- Rancho
- Date of Survey \_\_\_\_\_
- Control
- Property
- Other

COORDINATES (Optional)

N. \_\_\_\_\_  
E. \_\_\_\_\_  
Zone \_\_\_\_\_ Datum \_\_\_\_\_  
Elev. \_\_\_\_\_

Corner — Left as found  Found and tagged  Established  Reestablished  Rebuilt

Identification and type of corner found: Evidence used to identify or procedure used to establish or reestablish corner:

SEE MAP

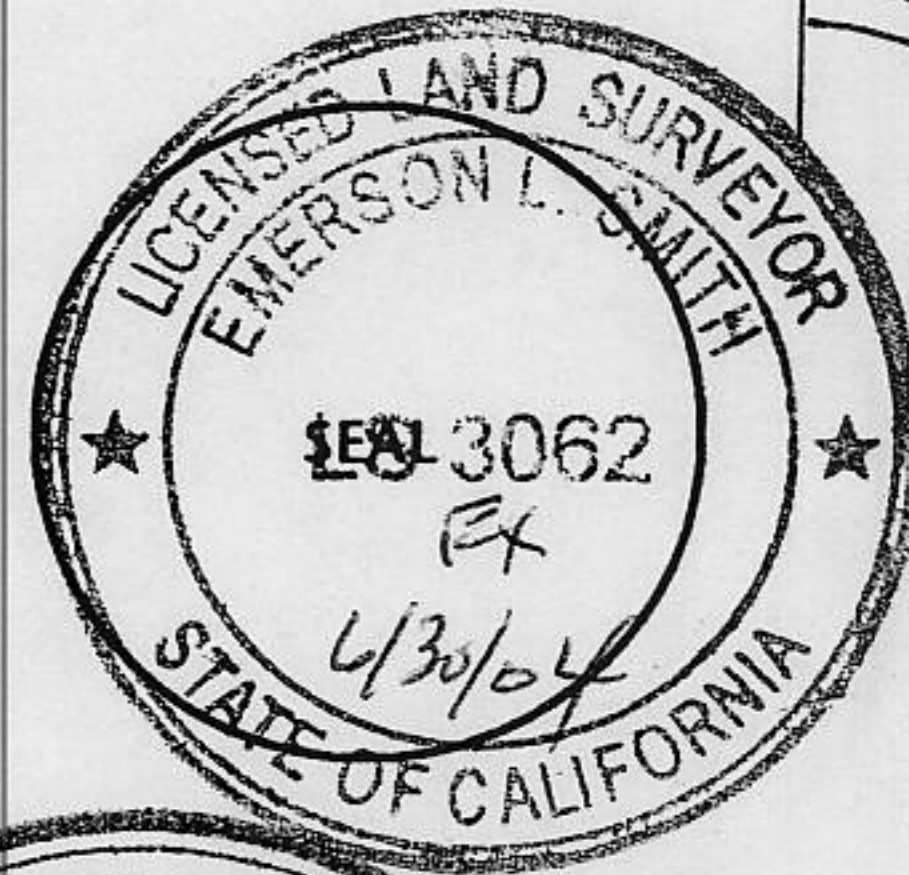
A description of the physical condition of the monument as found and as set or reset: SEE MAP

SURVEYOR'S STATEMENT

This Corner Record was prepared by me or under my direction in conformance with the Land

Surveyors' Act on JUNE 12 19XX 2000

Signed Emerson L. Smith L.S. or R.C.E. Number LS 3062

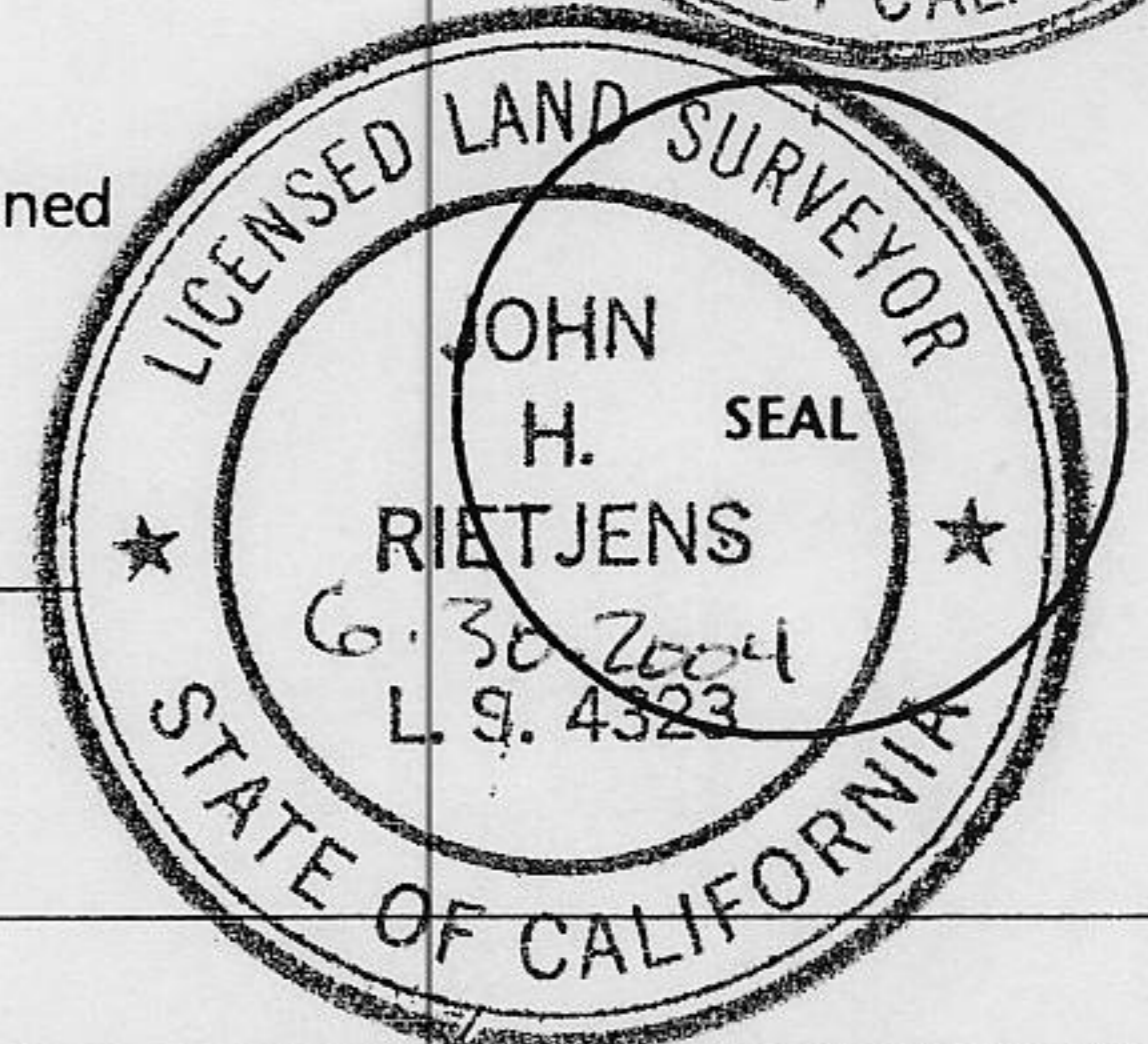


COUNTY SURVEYOR'S STATEMENT

This Corner Record was received DEC 6, 2000 19\_\_\_\_ and examined

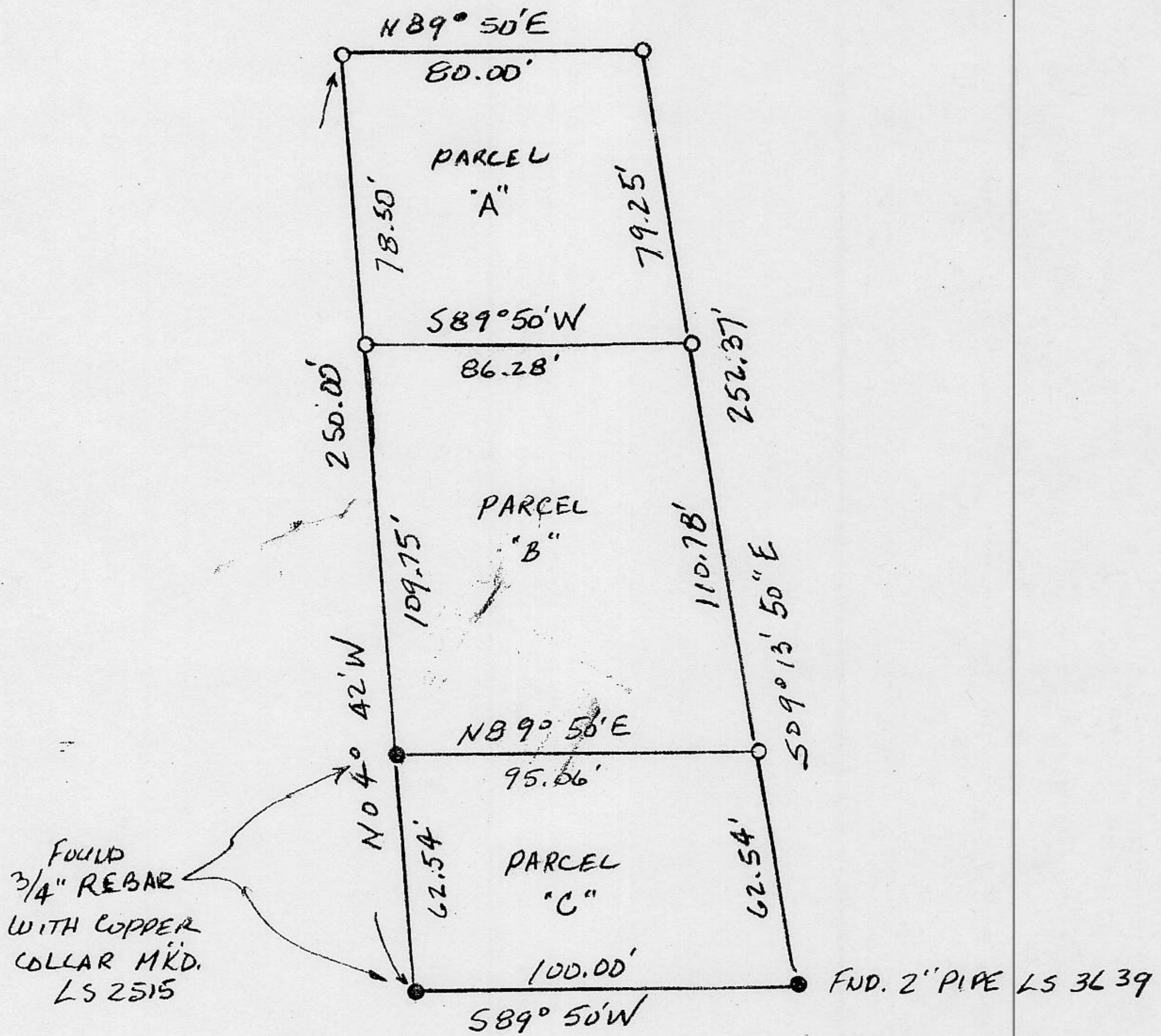
and filed DEC 12, 2000 19\_\_\_\_.

Signed John H. Rietsjens Title COUNTY SURVEYOR



County Surveyor's Comment \_\_\_\_\_

BOOK 6 CORNER RECORDS PAGE 81



MAP SHOWING RESURVEY OF PARCEL MAP 72903 FILED  
 IN BOOK 15, PAGE 9 OF PARCEL MAPS, PLACER COUNTY  
 RECORDS, LOCATED IN THE EAST HALF OF SECTION 4,  
 T.12N., R.18E., MDM. FOR MARY SCHUGER

SCALE: 1" = 50'

EMERSON L. SMITH  
LS 3062

JUNE 2000

- = FOUND MONUMENT AS NOTED.
- = SET 3/4" REBAR WITH PLASTIC CAP MARKED LS 3062.