

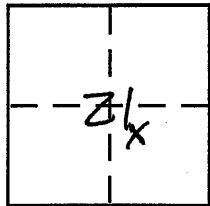
**CORNER RECORD**

Document Number \_\_\_\_\_

City of \_\_\_\_\_

County of Placer., California

Brief Legal Description Lot 48, Ridgewood Tract, D-62  
S.21, T.16N, R.17E, M.D.M.



**CORNER TYPE**

Government Corner  Control   
Meander  Property   
Rancho  Other   
Date of Survey 10/4/2000

**COORDINATES (Optional)**

N. \_\_\_\_\_  
E. \_\_\_\_\_  
Zone \_\_\_\_\_ NAD27  NAD83   
NAD83 Epoch \_\_\_\_\_  
Elev. \_\_\_\_\_  
Vert. Datum: NGVD29  NAVD88   
Meas. Units: Metric  Imperial

Corner - Left as found  Found and tagged  Established  Reestablished  Rebuilt

Identification and type of corner found: Evidence used to identify or procedure used to establish or reestablish the corner:

See pg. 2

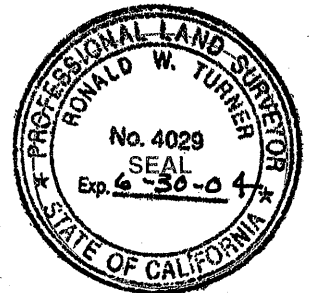
A description of the physical condition of the monument as found and as set or reset:

See pg. 2

**SURVEYOR'S STATEMENT**

This Corner Record was prepared by me or under my direction in conformance with the Land Surveyor's Act on 10/9/2000

Signed Ronald W. Turner P.L.S or R.C.E. No. 4029



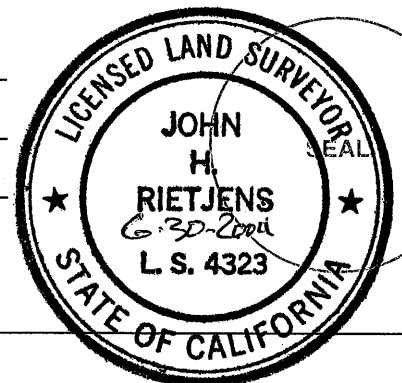
**COUNTY SURVEYOR'S STATEMENT**

This Corner Record was received Oct 12, 2000

and examined and filed Oct 13, 2000

Signed John H. Rietjens P.L.S or R.C.E. No. 4323

Title County Surveyor

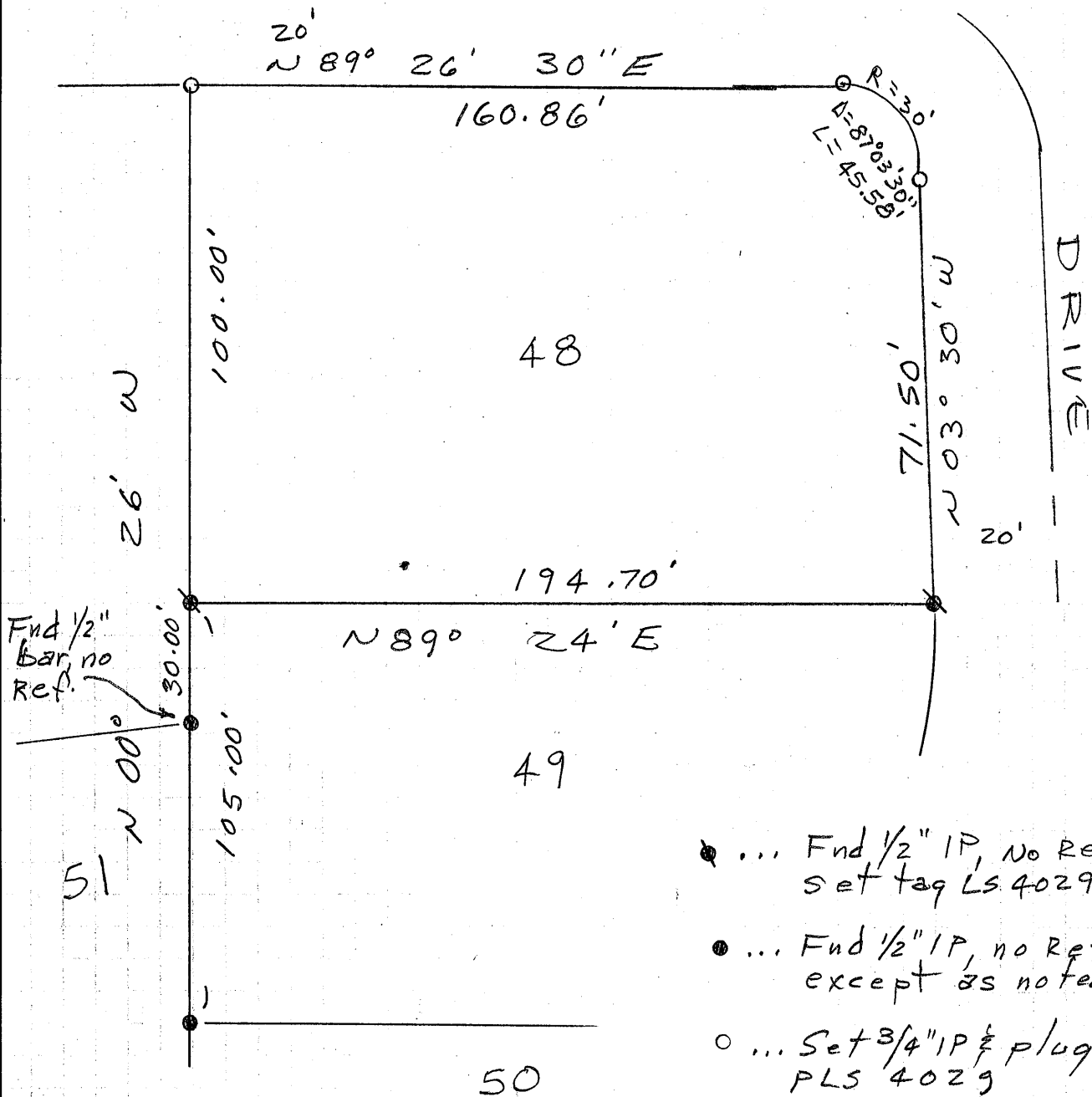


County Surveyor's Comment \_\_\_\_\_

BOOK 6 CORNER RECORDS PAGE 110

N.T.S.

NORTH ~~E~~ RIDGE



- ... Fnd 1/2" IP, No Ref., set tag LS 4029
- ... Fnd 1/2" IP, no Ref., except as noted
- ... Set 3/4" IP & plug PLS 4029