

CORNER RECORD

COUNTY OF PLACER, CALIFORNIA

City of \_\_\_\_\_ Document Number \_\_\_\_\_

Brief Legal Description LOT 171, DOLLAR POINT UNIT NO. 3, "H" MAPS PAGE 5



T 16 N  
R 17 E

CORNER TYPE

Government Corner  Control   
Meander  Property   
Rancho  Other   
Date of Survey 5-2-98

COORDINATES  
(Optional)

N. \_\_\_\_\_  
E. \_\_\_\_\_  
Zone \_\_\_\_\_ Datum \_\_\_\_\_  
Elev. \_\_\_\_\_

Corner— Left as found  Found and tagged  Established  Reestablished  Rebuilt

Identification and type of corner found: Evidence used to identify or procedure used to establish or reestablish corner:

● FOUND MONUMENT AS NOTED

A description of the physical condition of the monument as found and as set or reset:

⊗ SET 5/8" REBAR W/ 2" ALUM. CAP STAMPED TAHOE BASIN LAND SURVEYING LS 5886

SURVEYOR'S STATEMENT

This Corner Record was prepared by me or under my direction in conformance with the Land

Surveyor's Act on 7-25 19 98

Signed [Signature] L.S. or R.C.E. Number 5886

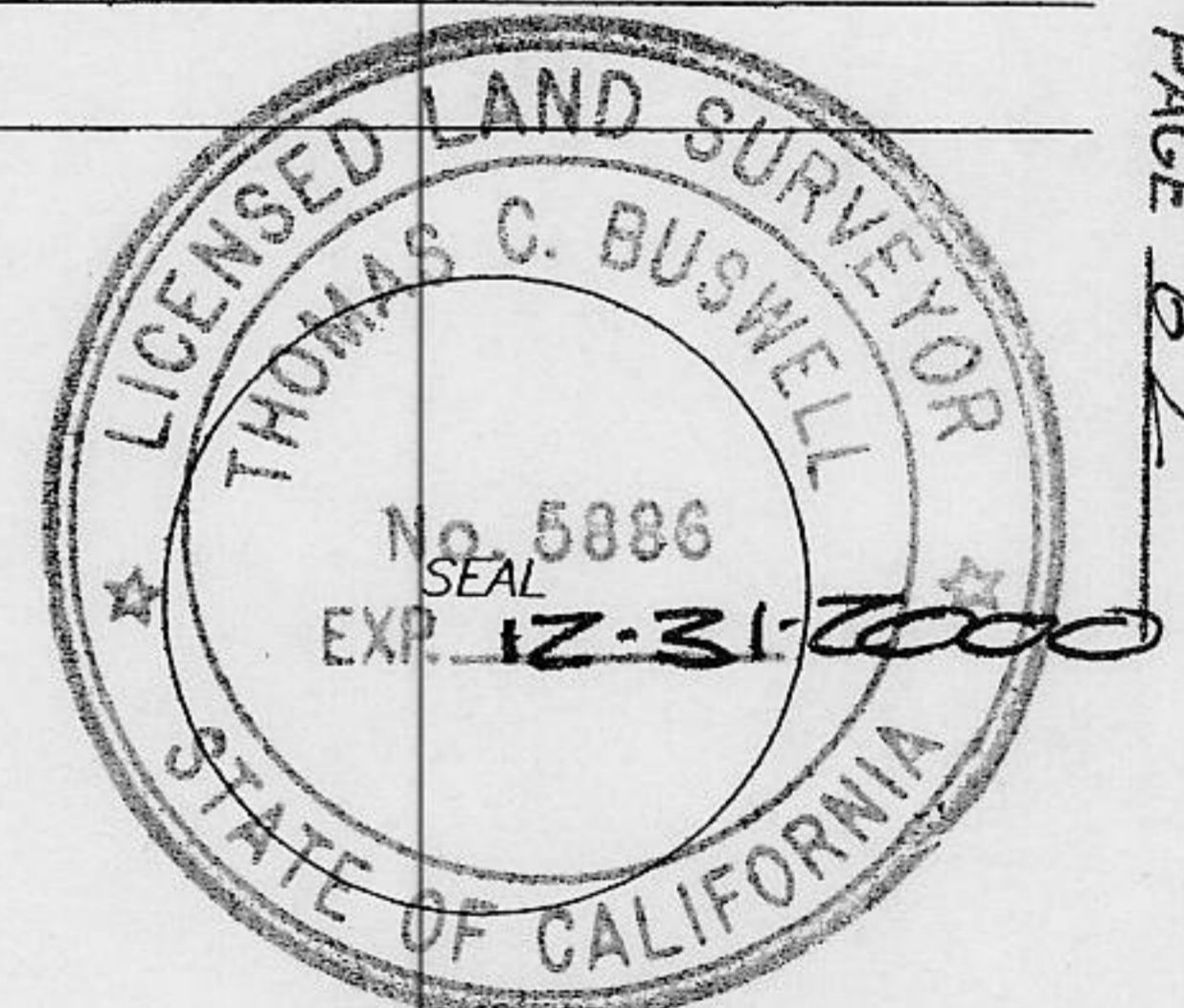
COUNTY SURVEYOR'S STATEMENT

This Corner Record was received August 11, 19 98 and examined

and filed April 11, 19 2000

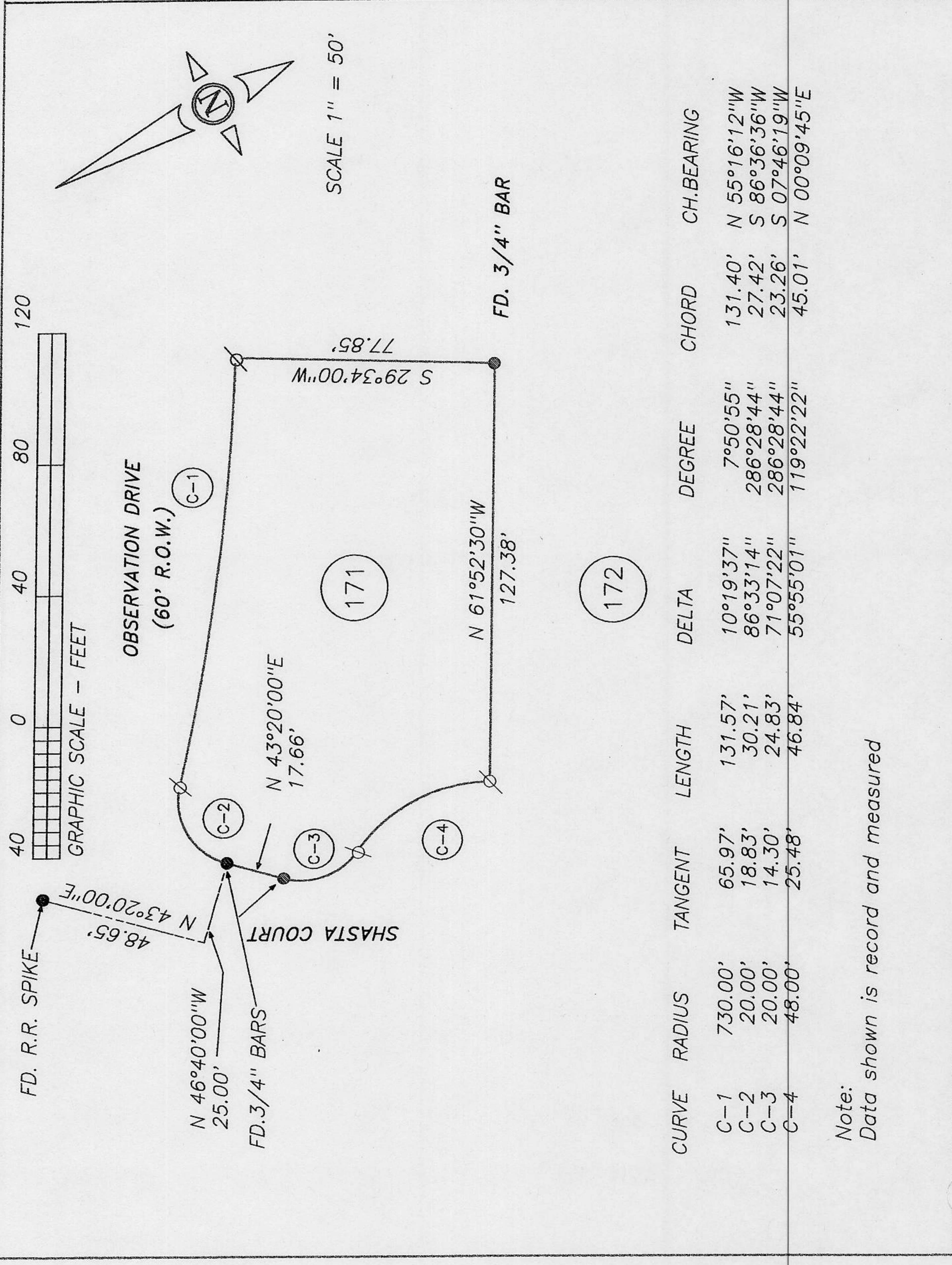
Signed [Signature] Title Deputy Co. Surveyor

County Surveyor's Comment \_\_\_\_\_



BOOK 6 CORNER RECORDS PAGE 62





CURVE	RADIUS	TANGENT	LENGTH	DELTA	DEGREE	CHORD	CH. BEARING
C-1	730.00'	65.97'	131.57'	10°19'37"	7°50'55"	131.40'	N 55°16'12"W
C-2	20.00'	18.83'	30.21'	86°33'14"	286°28'44"	27.42'	S 86°36'36"W
C-3	20.00'	14.30'	24.83'	71°07'22"	286°28'44"	23.26'	S 07°46'19"W
C-4	48.00'	25.48'	46.84'	55°55'01"	119°22'22"	45.01'	N 00°09'45"E

Note:  
Data shown is record and measured