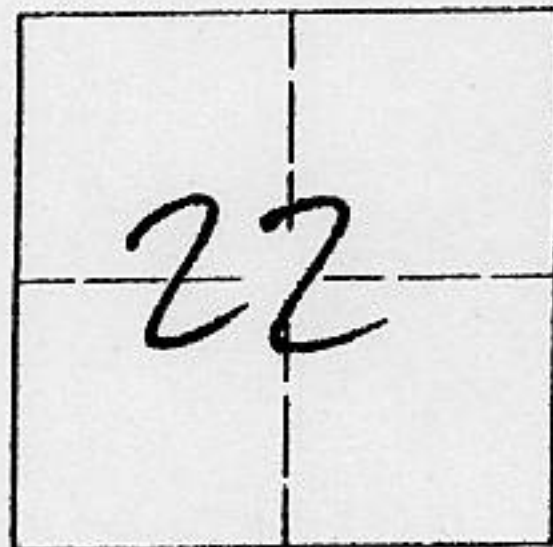


CORNER RECORD

Document Number _____

City of Carnelian Bay County of PLACER, California

Brief Legal Description Lot 5, ~~Book~~ ^{Block} 'K' Carnelian Bay Subdivision



T16N
R17E

CORNER TYPE

Government Corner Control
 Meander Property
 Rancho Other
 Date of Survey August 7 1998

COORDINATES (Optional)

N. _____
 E. _____
 Zone _____ Datum _____
 Elev. _____

Corner - Left as found Found and tagged Established Reestablished Rebuilt

Identification and type of corner found: Evidence used to identify or procedure used to establish or reestablish the corner:

Found monuments as noted, held found monuments along westerly line of Nevada Street.

A description of the physical condition of the monument as found and as set or reset:

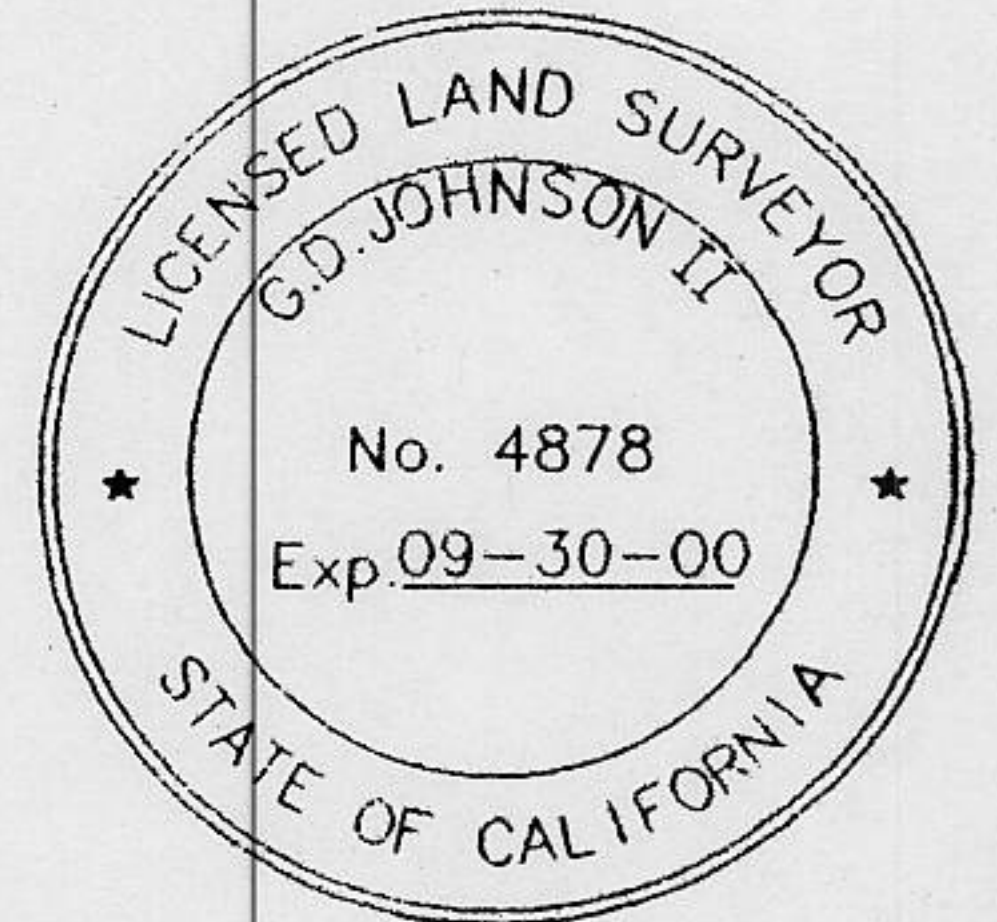
Set 5/8" x 24" rebar with cap, stamped LS-4878, at northwesterly corner of lot 5.

Set nail & tag, stamped LS-4878, in rock at northeasterly corner of lot 5.

SURVEYOR'S STATEMENT

This Corner Record was prepared by me or under my direction in conformance with the Land Surveyors' Act on August 7 1998.

Signed [Signature] L.S. or R.C.E. Number L.S. 4878



COUNTY SURVEYOR'S STATEMENT

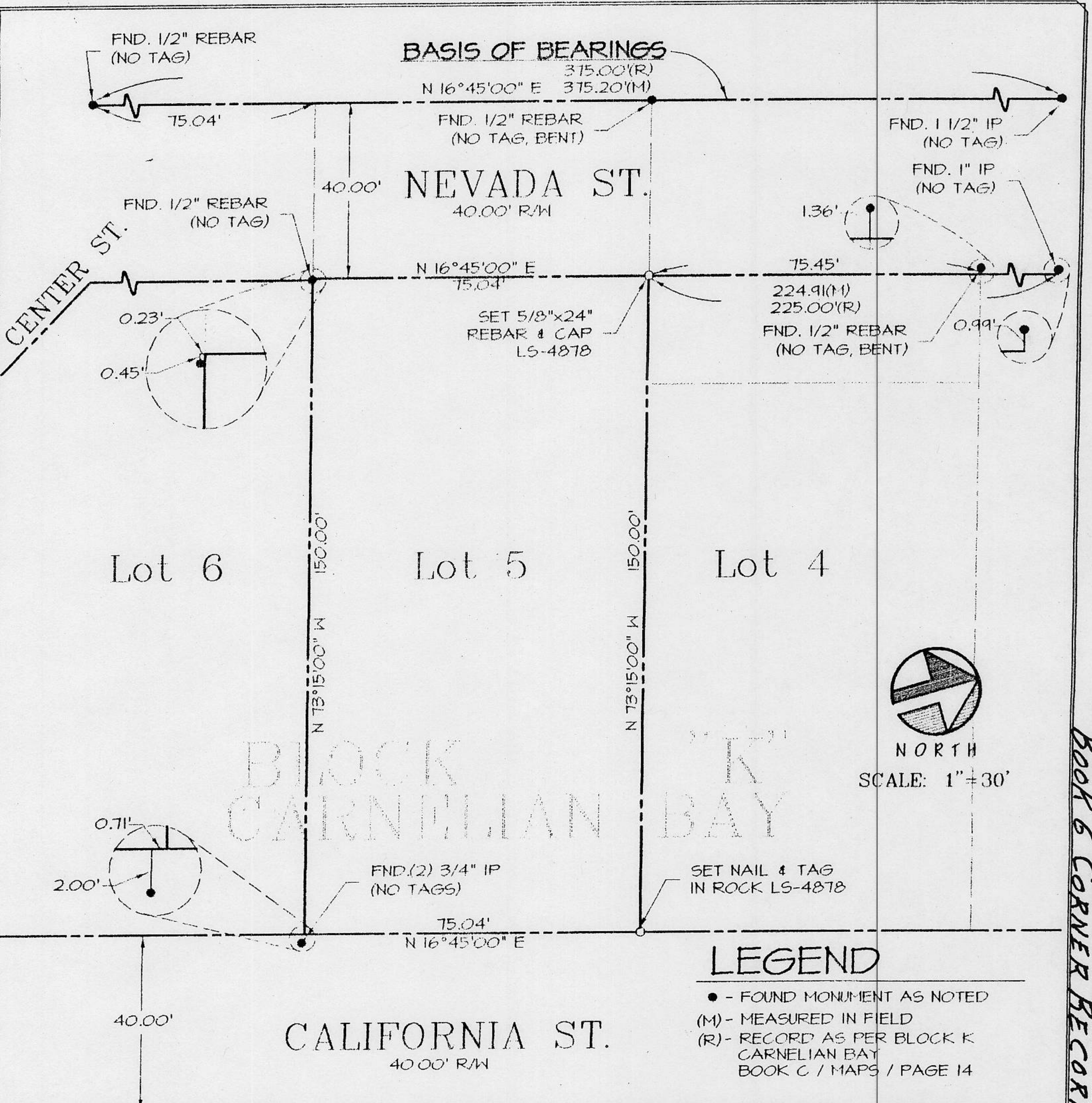
This Corner Record was received August 21, 1998 and examined and filed December 29, 1999.

Signed [Signature] Title Deputy Co. Surveyor



County Surveyor's Comment _____

BOOK 6 CORNER RECORDS, PAGE 56



NORTH
 SCALE: 1" = 30'

LEGEND

- - FOUND MONUMENT AS NOTED
- (M) - MEASURED IN FIELD
- (R) - RECORD AS PER BLOCK K CARNELIAN BAY BOOK C / MAPS / PAGE 14

K.B.FOSTER
 CIVIL ENGINEERING, INC.

Planning • Engineering • Surveying
 P O Box 129
 Carnelian Bay, CA 96142
 (530) 546-3381

98180

BOOK 6 CORNER RECORDS, PAGE 56