

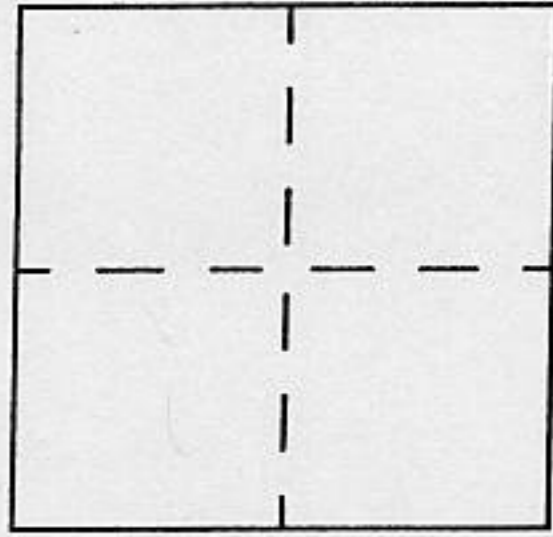
CORNER RECORD

Document Number _____

City of _____

County of Placer

, California

Brief Legal Description NE'ly corner PARCEL "D" Book 20 PM pg 89.**CORNER TYPE**

Government Corner Control
 Meander Property
 Rancho Other
 Date of Survey _____

**COORDINATES
(Optional)**

N. _____
 E. _____
 Zone _____ Datum _____
 Elev. _____

Corner - Left as Found Found as Tagged Established Reestablished Rebuilt

Identification and type of corner found: Evidence used to identify or procedure used to establish or reestablish the corner:

Original witness corners to the northeasterly corner of PARCEL "D", Book 20 of Parcel Maps, Page 89 were destroyed in a wash out and land slide that also destroyed a portion of the Drum Powerhouse Road. The road was rebuilt in late 1997 by PG&E and new witness corners were re-set in April 1998. The position of the northeasterly corner was set (computed) on the section line and by holding the record distance of 1169.15(1126.57+42.58) from a found witness corner to the southeasterly corner of PARCEL "D"

A description of the physical condition of the monument as found and as set or reset:

Set two witness corners on section line, one above the road cut back, and another below the road, out of the slide area. Both witness corners are 5/8 inch rebar with 1-1/2 inch aluminum cap stamped "WIT COR LS 5119 PG&E COMPANY".

SURVEYOR'S STATEMENT

This Corner Record was prepared by me or under my direction in conformance with the Land Surveyor's Act on May 14 1998.

Signed Robert D. Fields S. or R.C.E. Number LS 5119

**COUNTY SURVEYORS STATEMENT**

This Corner Record was received May 18, 1998 and examined and filed July 7, 1999.

Signed Ned J. Snyder Title Dep. Co. Surveyor

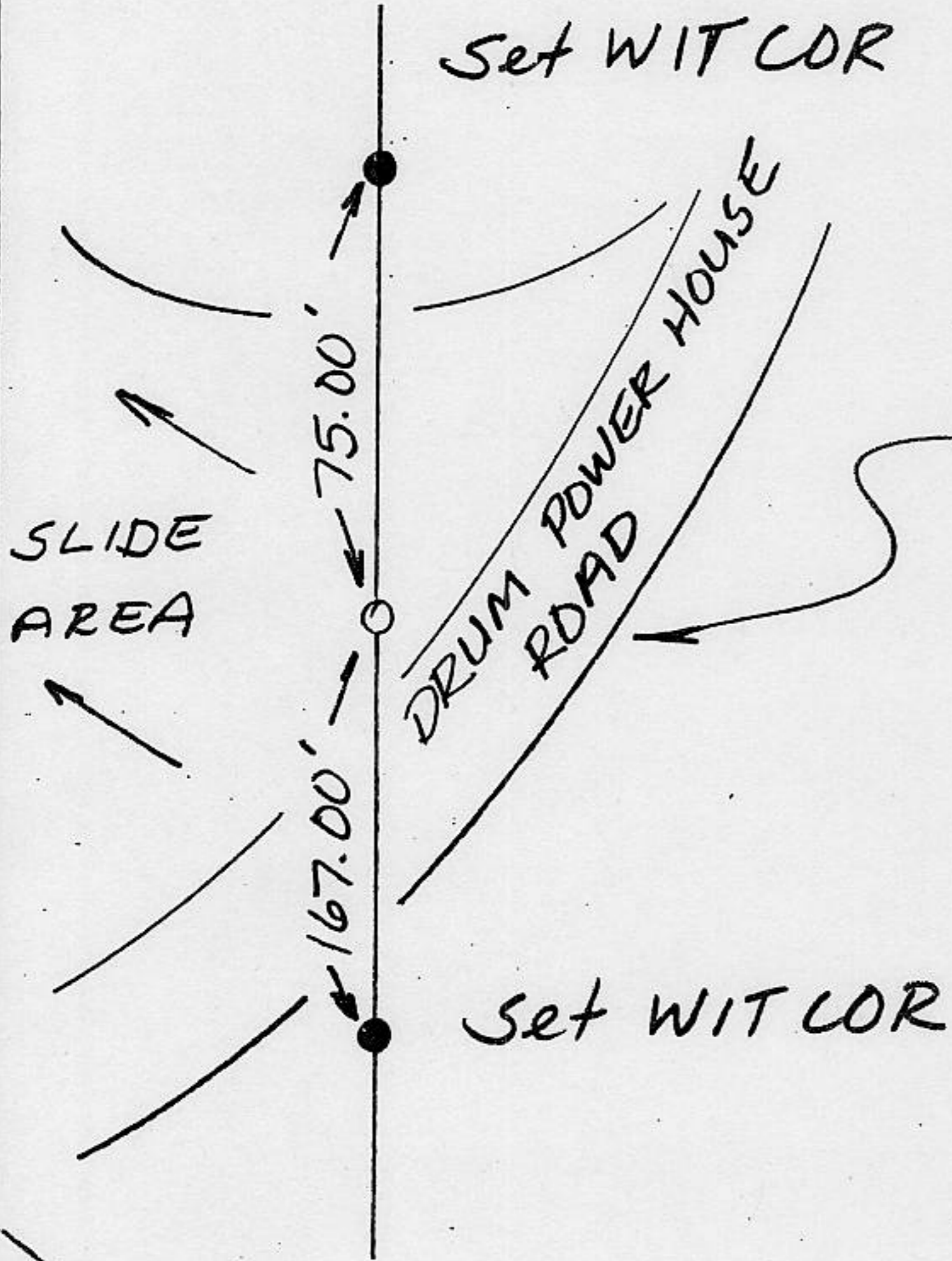


County Surveyor's Comment _____

BOOK 6 CORNER RECORDS PAGE 40

T16N, R10E M.D.M.

23 24 Fd. Sec. Cor. as
26 25 per (1) & (2)



PARCEL "D"
20 PM 89

PARCE "C"

2616.35 Meas.
2615.97 (2)
2615.85 (3)

5 03° 38' 43" W (1)

1169.15 (1) & Held
1169.54 (2)

1999.81 Meas.
1999.29 (1+3)
1997.88 (2)

Nothing set
See enlargement

Not to Scale

Fd. 1/2" Iron pin & tag
L.S. 3062
per (1) & (2)

616.09 Meas.
616.59 (1)
618.09 (2)

26 25 Fd. 1/4 Sec. Cor. as
per (1) & (2)

References

- (1) 20 PM 89
- (2) 10 RDS 94 (7 RDS 5)
- (3) Data per Unrecorded map by L.O. Kendall, Oct. 1980 filed with County Surveyors Office, as per 20 PM 89