

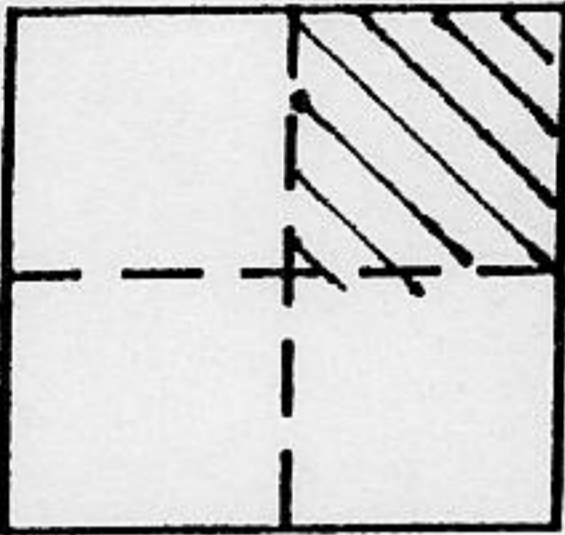
CORNER RECORD

COUNTY OF PLACER, CALIFORNIA

City of ROCKLIN

Document Number \_\_\_\_\_

Brief Legal Description LOT 56 OF RUSTIC HILLS SUB'D. FILED IN BK. H MAPS, PG. 13



PTN. NE. 1/4  
SECT. 30  
T. 11 N. R. 7 E.

CORNER TYPE

- Government Corner
- Meander
- Rancho
- Date of Survey \_\_\_\_\_
- Control
- Property
- Other

COORDINATES (Optional)

N. \_\_\_\_\_  
 E. \_\_\_\_\_  
 Zone \_\_\_\_\_ Datum \_\_\_\_\_  
 Elev. \_\_\_\_\_

Corner — Left as found  Found and tagged  Established  Reestablished  Rebuilt

Identification and type of corner found: Evidence used to identify or procedure used to establish or reestablish corner:

FND. SAME TYPE MONUMENTS AS INDICATED ON RUSTIC HILLS SUB'D. PER BK. H MAPS, PG. 13 WITH THE EXCEPTION OF A FND. 1/2" I. PIN TAGGED L.S. 3475 AS SHOWN ON SHT. 2 OF 2 WHICH FITS IN THE PROPER LOCATION. BASED ON THESE FINDINGS WE RE-SET THE SOUTH AND WEST CORNERS THAT WERE MISSING WITH NEW MONUMENTS AS SHOWN ON SHEET 2 OF 2.

A description of the physical condition of the monument as found and as set or reset:

SEE EXHIBIT MAP SHEET 2 OF 2

SURVEYOR'S STATEMENT

This Corner Record was prepared by me or under my direction in conformance with the Land

Surveyors' Act on 20 Oct 1998.

Signed [Signature] L.S. or R.C.E. Number 486230

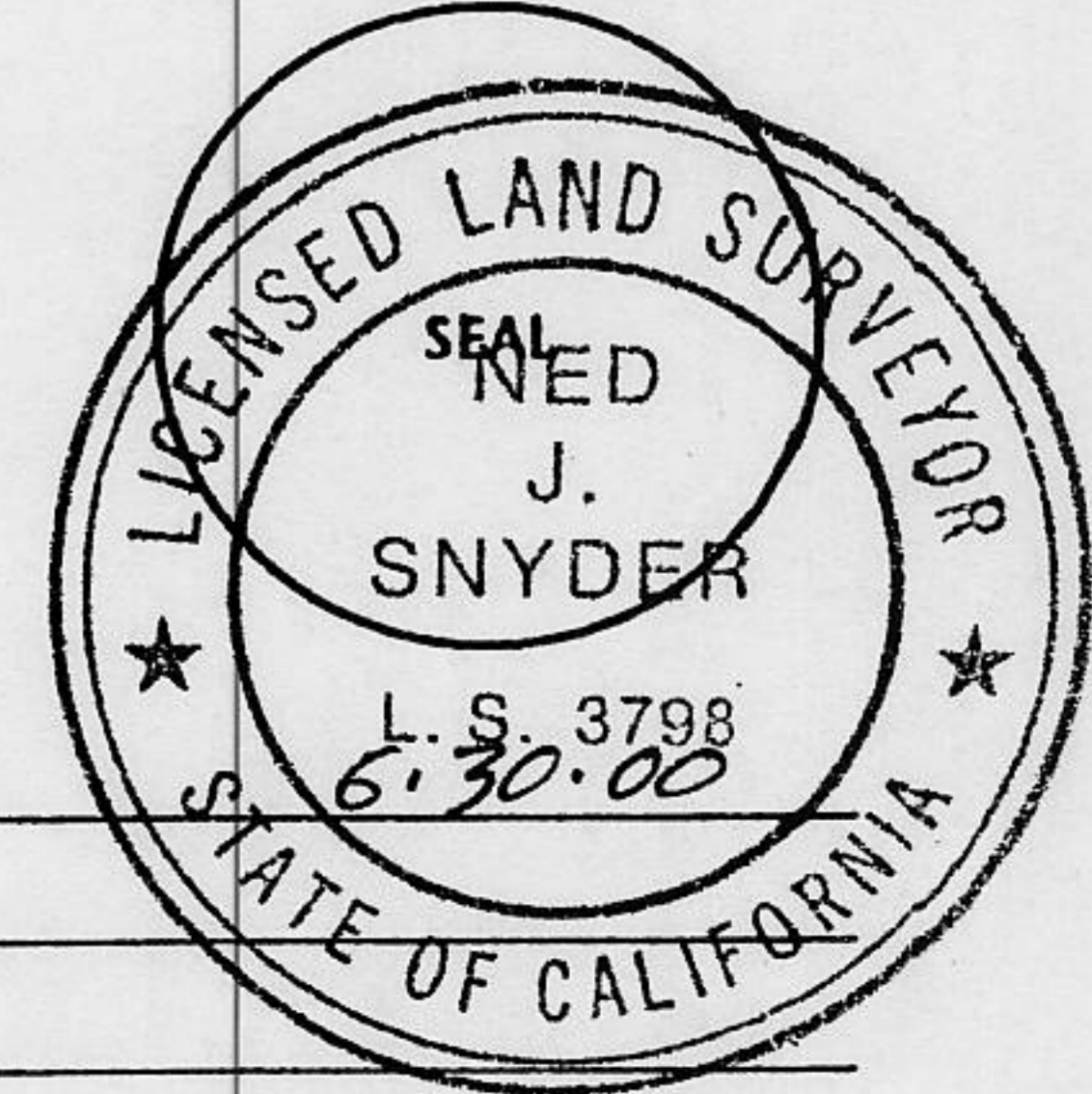
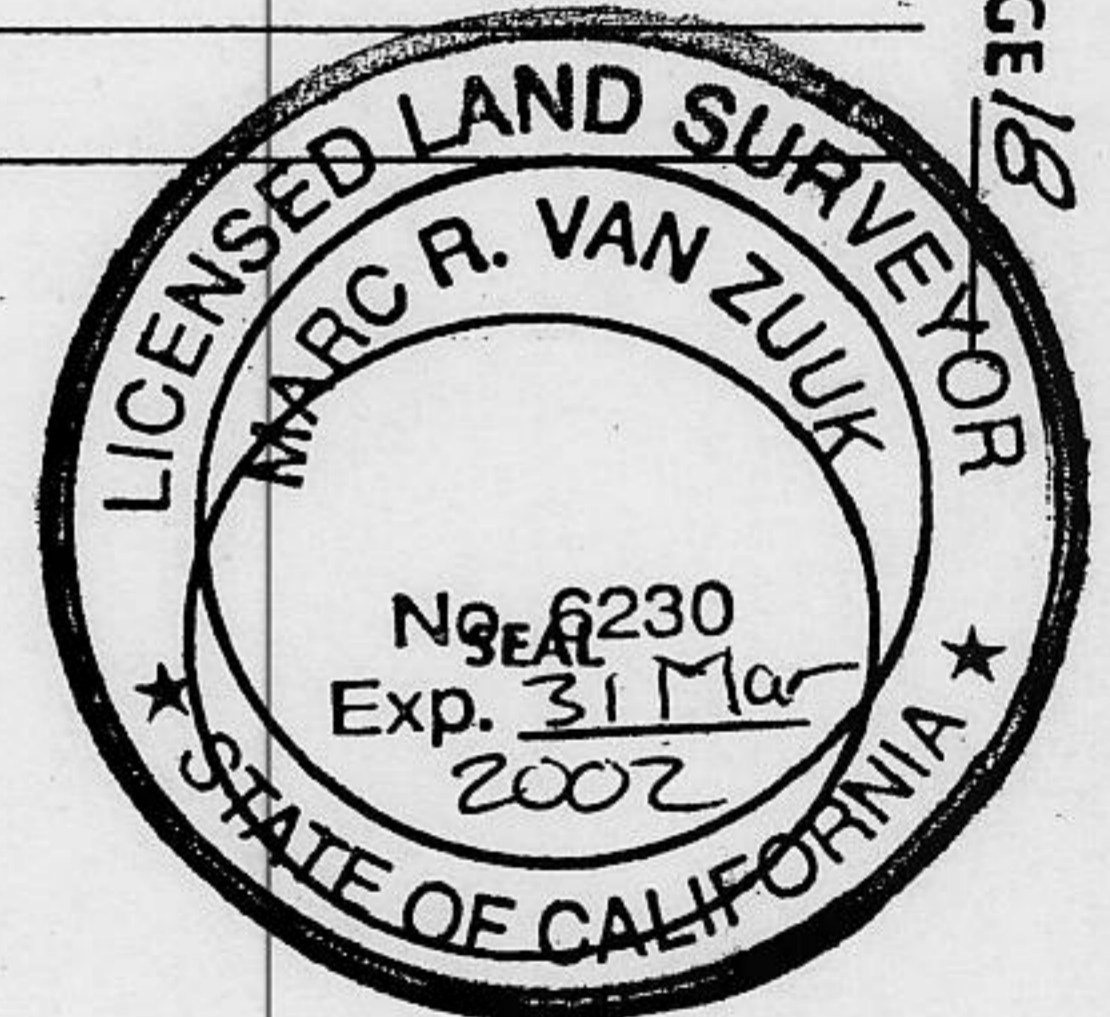
COUNTY SURVEYOR'S STATEMENT

This Corner Record was received Oct. 22, 1998 and examined

and filed April 6 1999.

Signed [Signature] Title Deputy Co. Surveyor

County Surveyor's Comment \_\_\_\_\_



BOOK 6 CORNER RECORDS PAGE 18

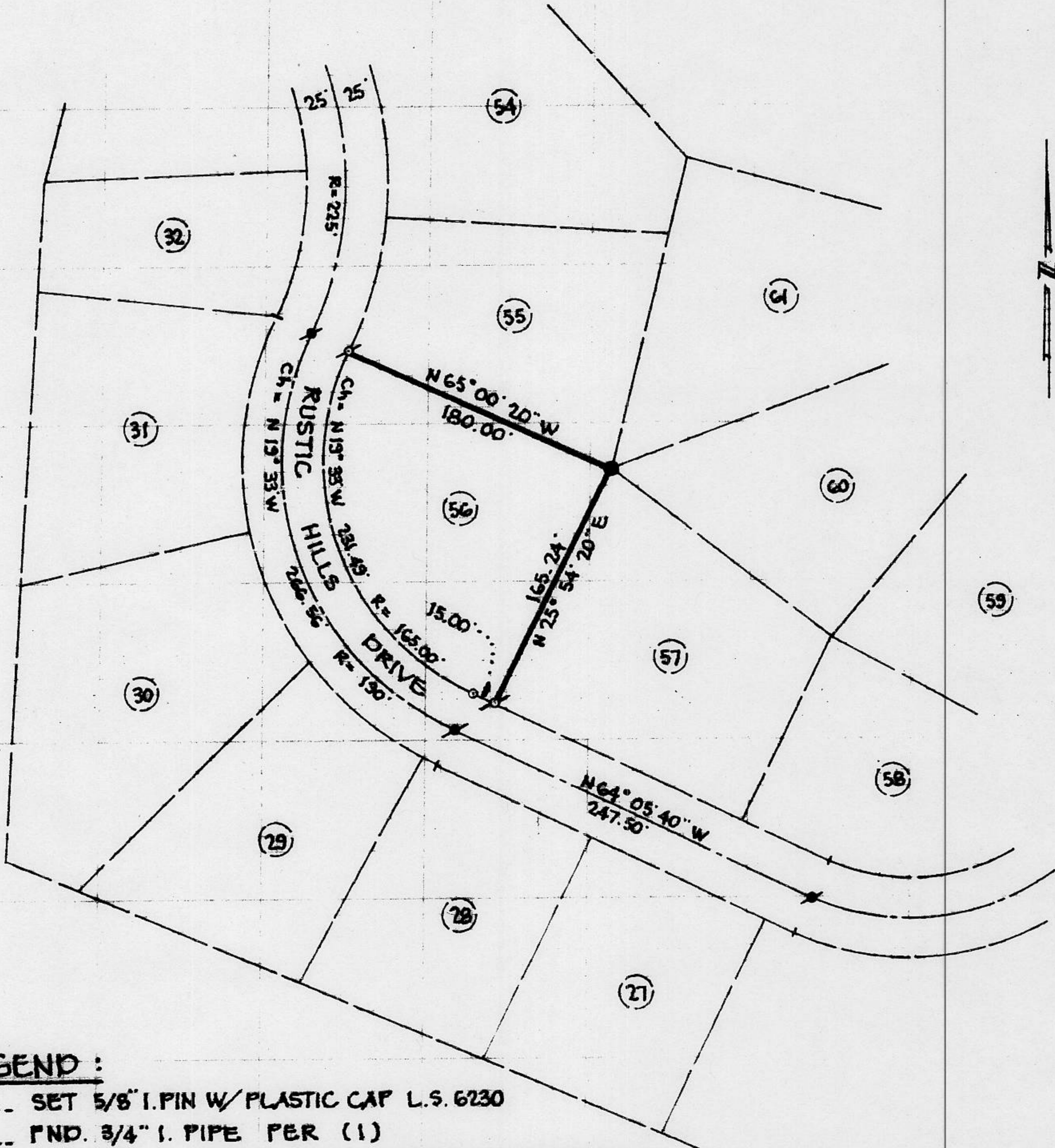


# PLAT OF SURVEY

A RETRACEMENT OF LOT 56 OF RUSTIC HILLS  
 SUBDIVISION FILED IN BK. H. MAPS, PG. 13 O.R.P.C.  
 A PORTION OF NE. 1/4 OF SECTION 30, T.11N. R.7E. M.D.M.  
 CITY OF ROCKLIN, CALIF. COUNTY OF PLACER

SCALE 1" = 100'      OCTOBER, 1998

AUBURN SURVEYORS



## LEGEND :

- ⊙ --- SET 5/8" I. PIN W/ PLASTIC CAP L.S. 6230
- --- FND. 3/4" I. PIPE PER (1)
- --- FND. 1/2" I. PIN TAGGED L.S. 3475 (NO RECORD)
- (1) --- PER BOOK H MAPS, PAGE 13
- --- NOTHING FOUND OR SET

BOOK 6 CORNER RECORDS, PAGE 18