

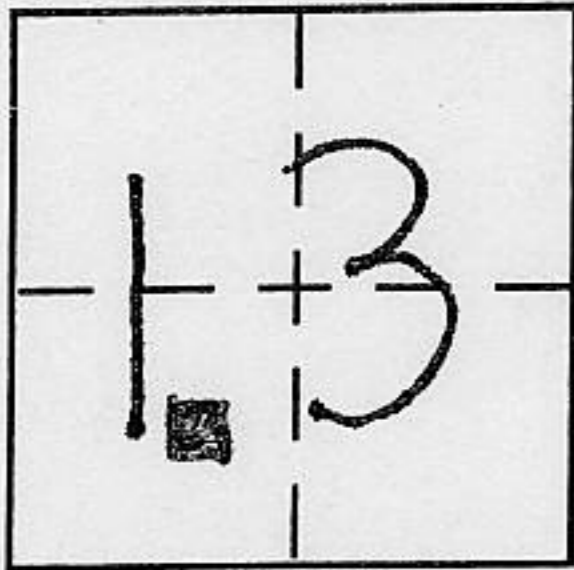
CORNER RECORD

Document Number _____

City of _____

County of Placer, California

Brief Legal Description Lot 153, Talmont Est. No. 2, Book I, Maps PG. 1, O.R.P.C.



CORNER TYPE
T. 15N. Government Corner Control
R. 16E Meander Property
SEC. 13 Rancho Other
Date of Survey June 14, 2000

COORDINATES (Optional)
~~N. _____
E. _____
Zone _____ NAD27 NAD83
NAD83 Epoch _____
Elev. _____
Vert. Datum: NGVD29 NAVD88
Meas. Units: Metric Imperial~~

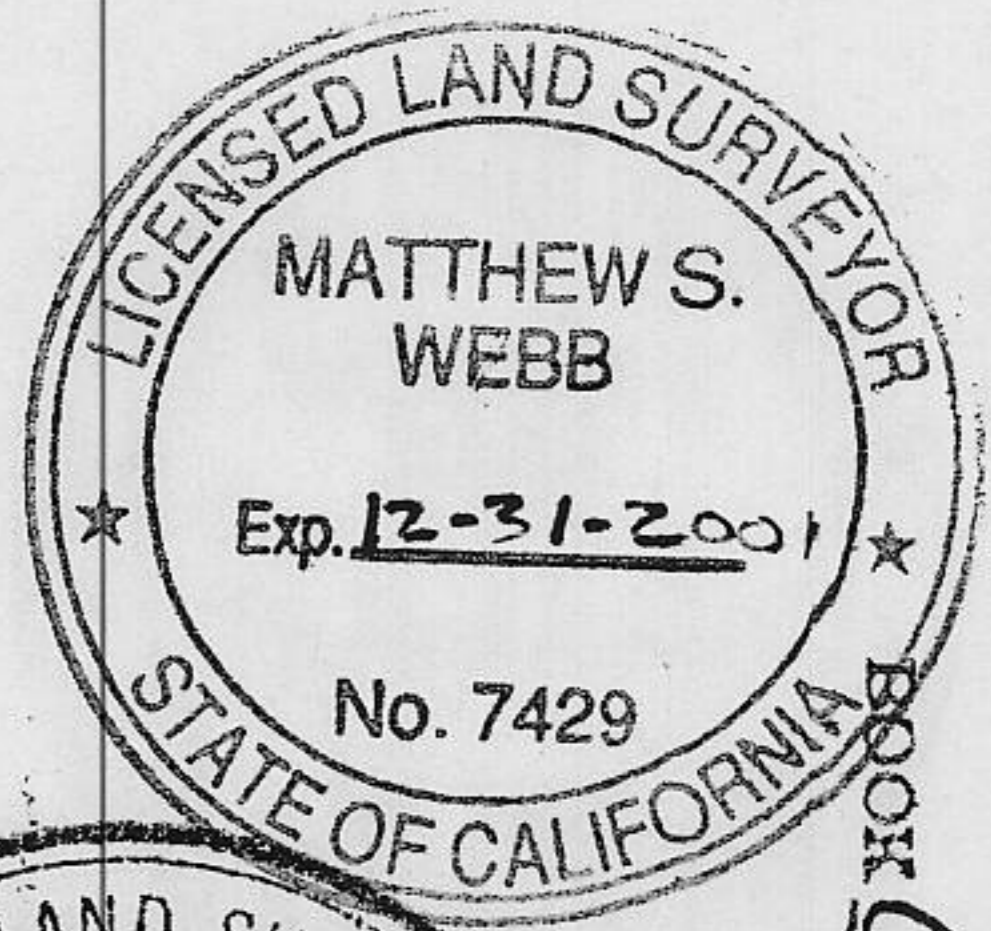
Corner - Left as found Found and tagged Established Reestablished Rebuilt

Identification and type of corner found: Evidence used to identify or procedure used to establish or reestablish the corner:
See sketch on back

A description of the physical condition of the monument as found and as set or reset:
See sketch on back

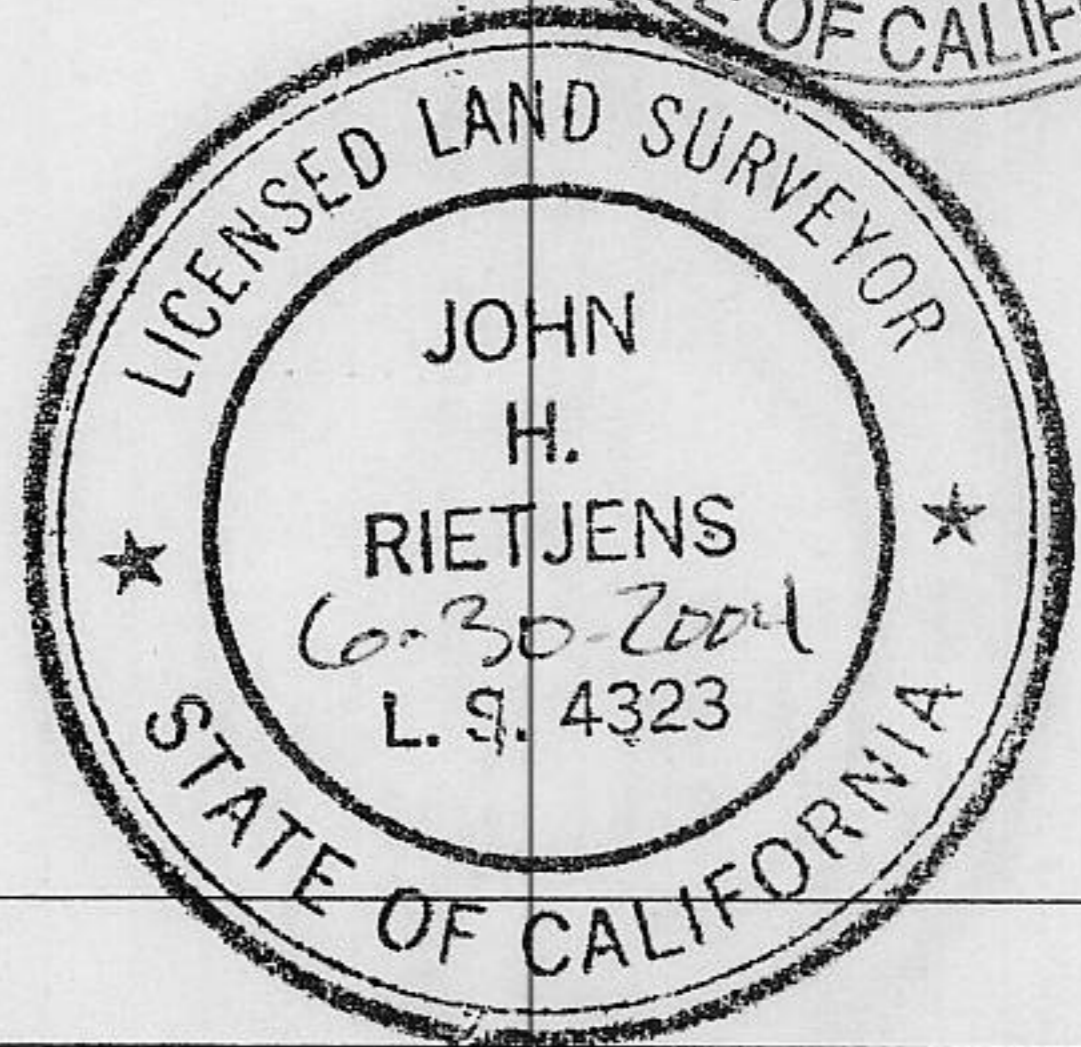
SURVEYOR'S STATEMENT

This Corner Record was prepared by me or under my direction in conformance with the Land Surveyor's Act on July 10, 2000
Signed Matthew Webb P.L.S. or R.C.E. No. 7429



COUNTY SURVEYOR'S STATEMENT

This Corner Record was received August 11, 2000
and examined and filed May 3, 2001
Signed John H. Rietsjens P.L.S. or R.C.E. No. 4323
Title County Surveyor



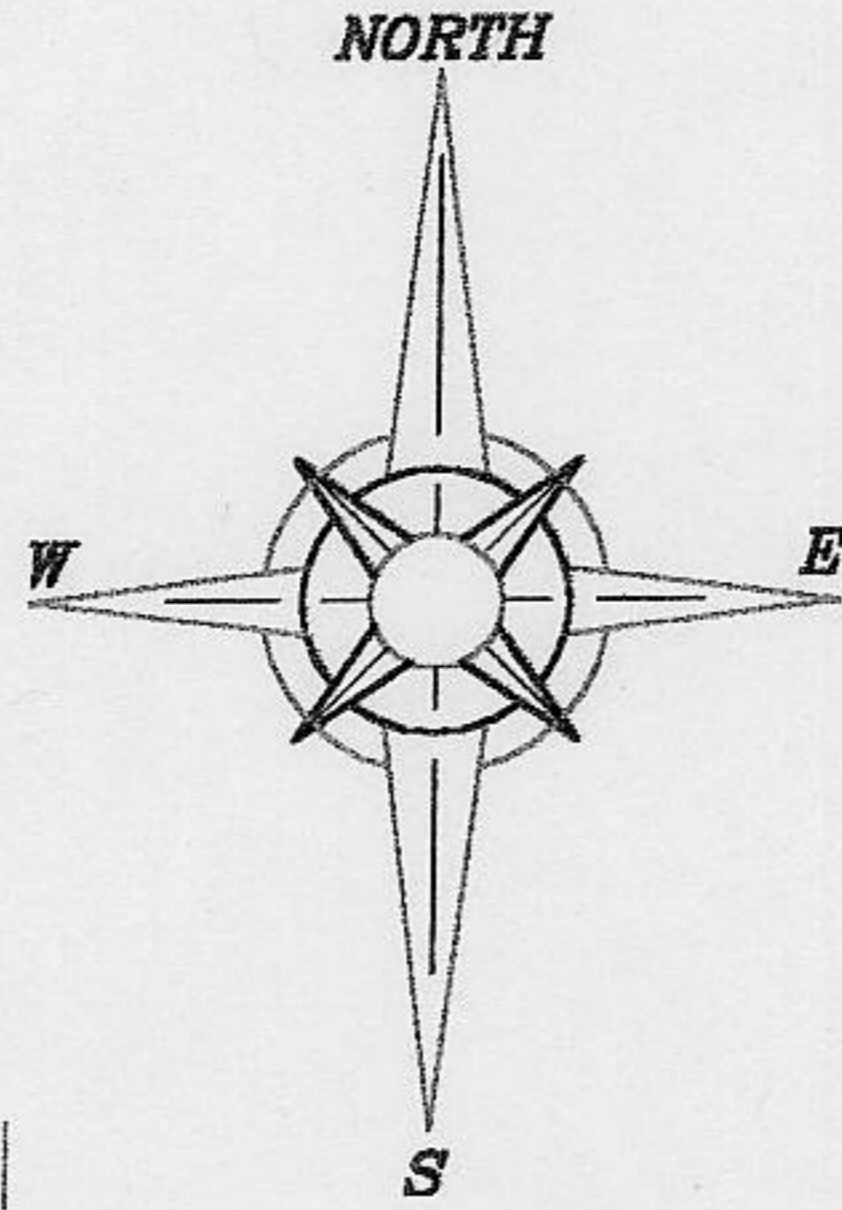
County Surveyor's Comment _____

BOOK 6 CORNER RECORDS PAGE 99

BOOK 6 CORNER RECORDS PAGE 99

PLAT OF SURVEY
LOT 153 TALMONT ESTATES UNIT No. 2,
BOOK 1, AT PAGE 1, OFFICIAL RECORDS
PLACER COUNTY CALIFORNIA, SECTION 13,
TOWNSHIP 15, N., RANGE 16, E., M.D.B.&.M
SCALE 1" = 30' DATE OF SURVEY 6/14/2000

FD. 1/2" RB
LS 2515



LOT 155

LOT 154

LOT 153

LOT 152

TALMONT CIRCLE

