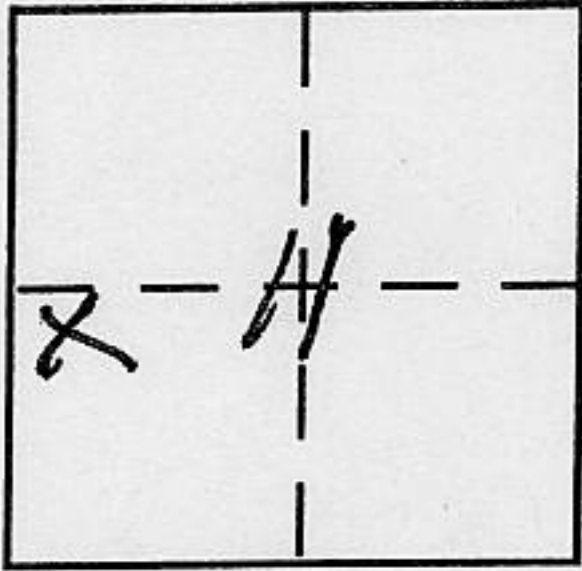


CORNER RECORD

Document Number _____

City of _____ County of Placer, California

Brief Legal Description Lot 116, Kingswood West, M.O.R. 1-73
Sec. 11, T16N, R17E, M.D.M.



CORNER TYPE

COORDINATES (Optional)

Government Corner Control
Meander Property
Rancho Other
Date of Survey 8-3-2000

N. _____
E. _____
Zone _____ NAD27 NAD83
NAD83 Epoch _____
Elev. _____
Vert. Datum: NGVD29 NAVD88
Meas. Units: Metric Imperial

Corner - Left as found Found and tagged Established Reestablished Rebuilt

Identification and type of corner found: Evidence used to identify or procedure used to establish or reestablish the corner:

See pg. 2

A description of the physical condition of the monument as found and as set or reset:

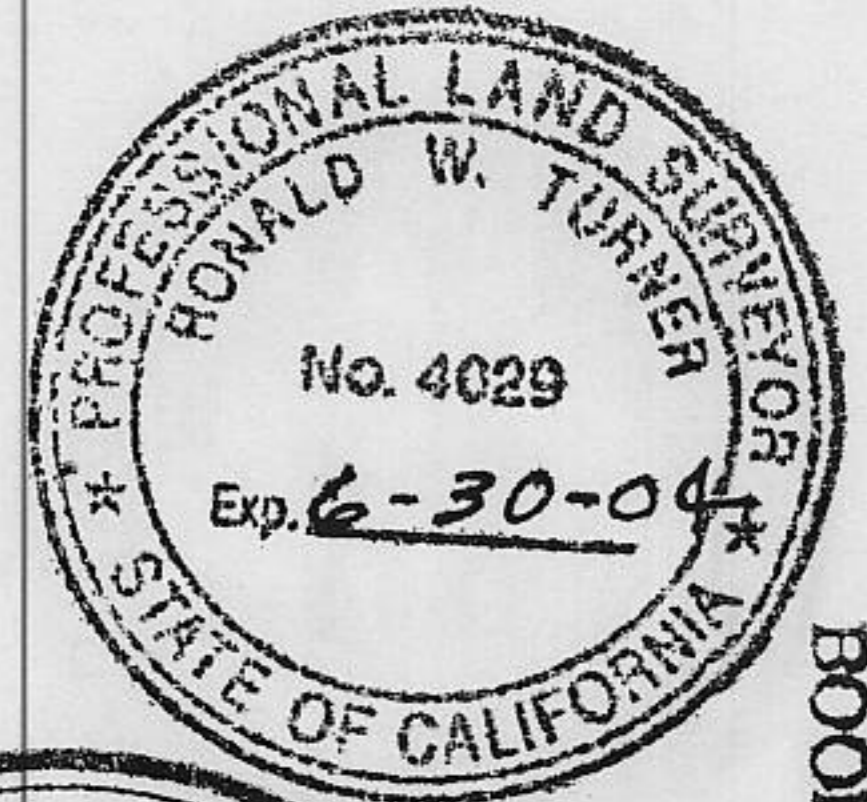
See pg. 2

SURVEYOR'S STATEMENT

This Corner Record was prepared by me or under my direction in conformance with

the Land Surveyor's Act on 11/10/2000

Signed Ronald W. Turner P.L.S or R.C.E. No. 4029



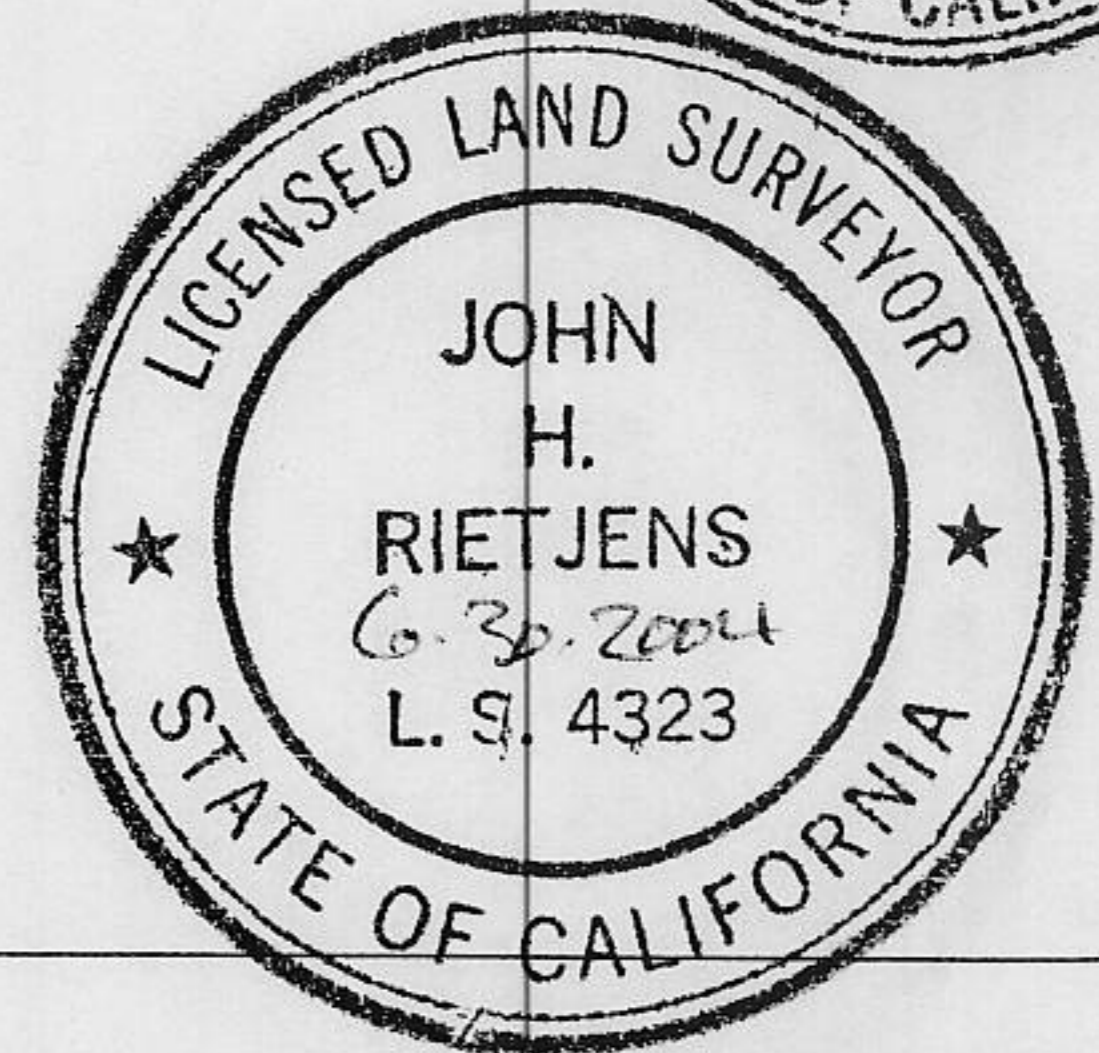
COUNTY SURVEYOR'S STATEMENT

This Corner Record was received March 21, 2001

and examined and filed APRIL 16, 2001

Signed John Rietsjens P.L.S or R.C.E. No. 4323

Title County Surveyor



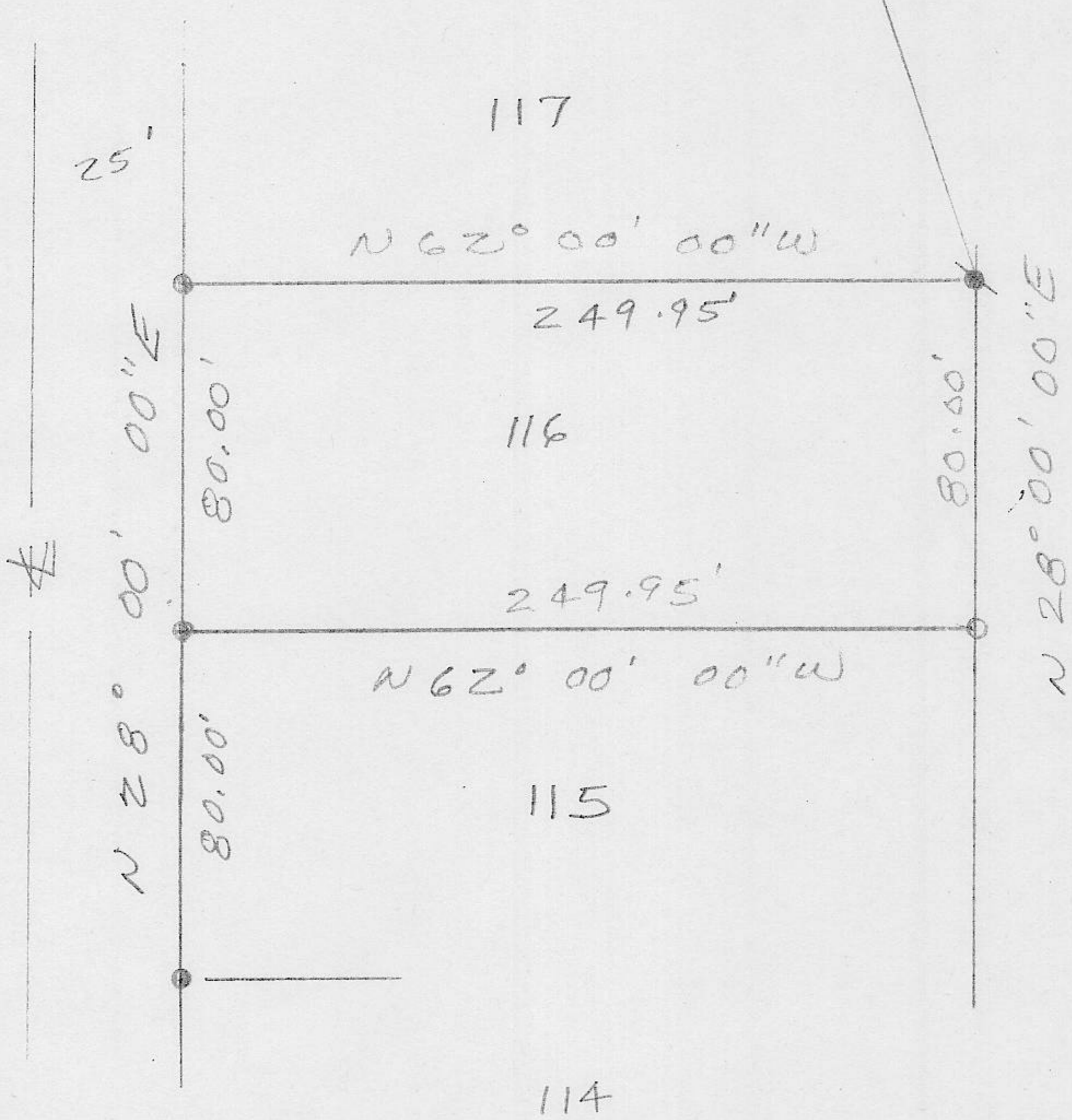
County Surveyor's Comment _____

BOOK 6 CORNER RECORDS PAGE 93

APN 112-220-011

00198

KINGS WAY



N.T.S.

- ... End 3/4" bar
- ... End 5/8" bar
‡ cap LS 3422
- ... Set 3/4" IP ‡
plug PLS 4029