

(For County Use Only)

CORNER RECORD

COUNTY OF Placer T. 14N R. 16E MERIDIAN MDM CALIFORNIA

CORNER TYPE: GOV'T. CORNER MEANDER RANCHO CONTROL OTHER

CORNER IDENTIFICATION — DATE OF VISIT July 1992



CORNER — LEFT AS FOUND FOUND AND TAGGED REESTABLISHED OBLITERATED CORNER REBUILT

PHYSICAL DESCRIPTION OF CORNER FOUND; EVIDENCE AND METHOD USED TO IDENTIFY OR REESTABLISH

Found a B-L-M Brass Cap and pipe, +18",
with mound of stones, 1967

T14N R16E
1/4
S20 S21
1967

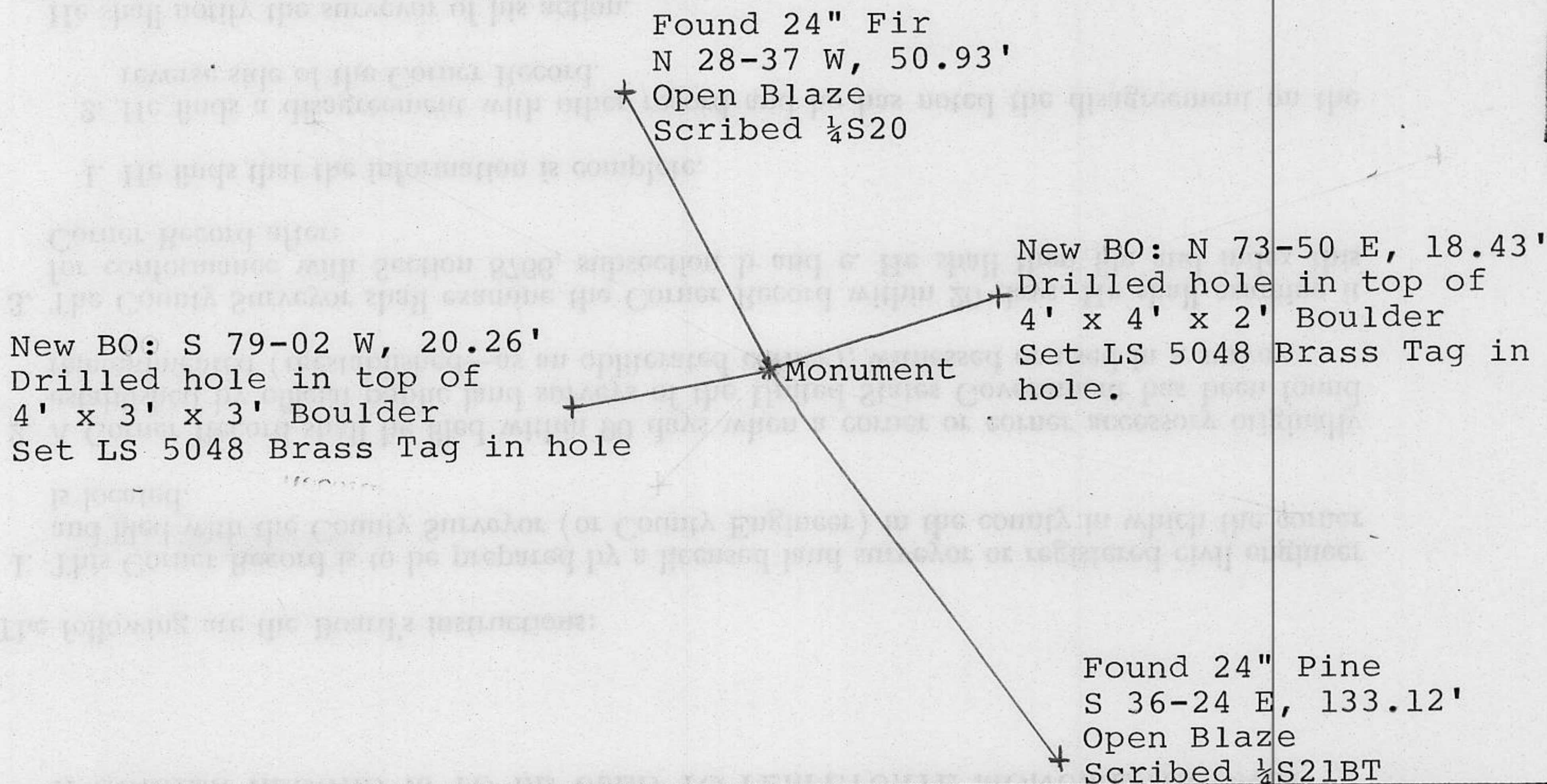
PHYSICAL DESCRIPTION OF MONUMENTS REBUILT OR PERPETUATED

Set a 6' fence post with Land Survey Monument and Property Boundary signs.

CALIFORNIA COORDINATE SYSTEM ORDER: FIRST SECOND THIRD
STATIONS USED: NGS (USC & GS) STATE COUNTY OTHER STATION _____ STATION _____
ZONE _____ ELEVATION _____ NORTHINGS (Y) _____ EASTINGS (X) _____

(Fold)

SKETCH: (Include reference tie or witness points, remarks and topo of area)

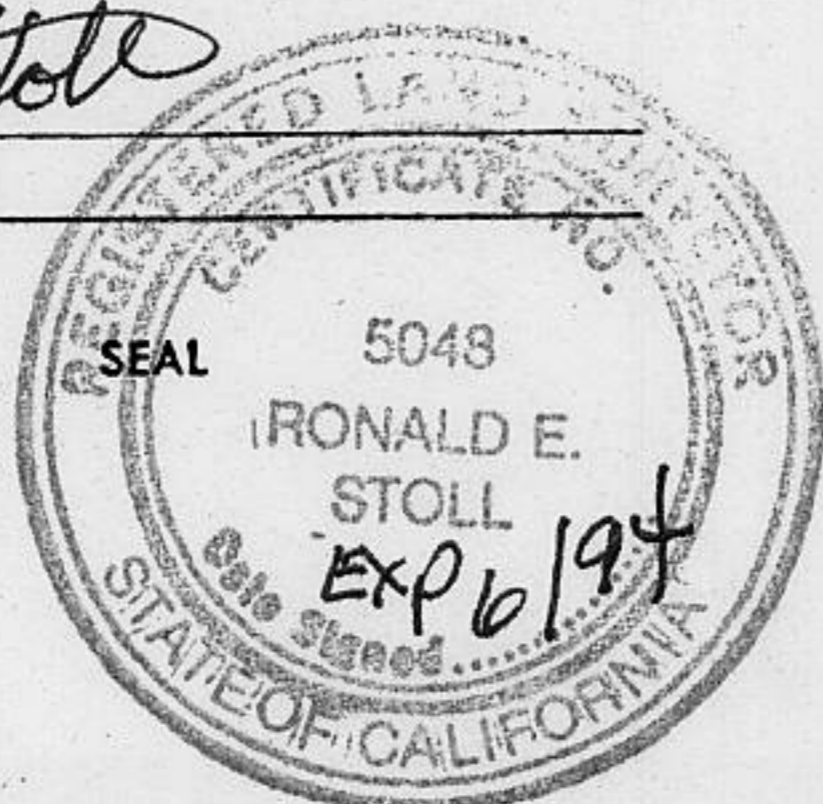


SURVEYOR'S CERTIFICATE

THIS CORNER RECORD WAS PREPARED BY ME OR UNDER MY DIRECTION IN CONFORMANCE WITH THE LAND SURVEYORS ACT ON July 14 1992.

SIGNED: RM & Stoll

L.S. or R.C.E. No.: LS 5048



COUNTY SURVEYOR'S CERTIFICATE

THE CORNER RECORD WAS RECEIVED MAR. 14 1994 AND EXAMINED AND FILED MAY 5 1994.

BY: [Signature]
TITLE: DEPUTY COUNTY SURVEYOR

DOCUMENT No. _____

STATEMENT ON BACK OF SHEET

YES NO

BOOK 4 CORNER RECORDS PAGE 32