

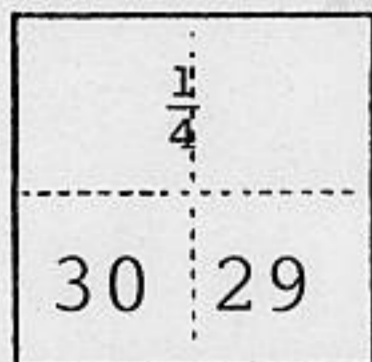
(For County Use Only)

### CORNER RECORD

COUNTY OF Placer T. 14N R. 16E MERIDIAN MDM CALIFORNIA

CORNER TYPE: GOV'T. CORNER  MEANDER  RANCHO  CONTROL  OTHER

CORNER IDENTIFICATION — DATE OF VISIT September 1991



CORNER — LEFT AS FOUND  FOUND AND TAGGED  REESTABLISHED OBLITERATED CORNER  REBUILT

PHYSICAL DESCRIPTION OF CORNER FOUND; EVIDENCE AND METHOD USED TO IDENTIFY OR REESTABLISH

Found a B-L-M Brass cap and pipe, +36" in 3' mound of stones to cap.

T14NR16E  
S30 | S29  
L967

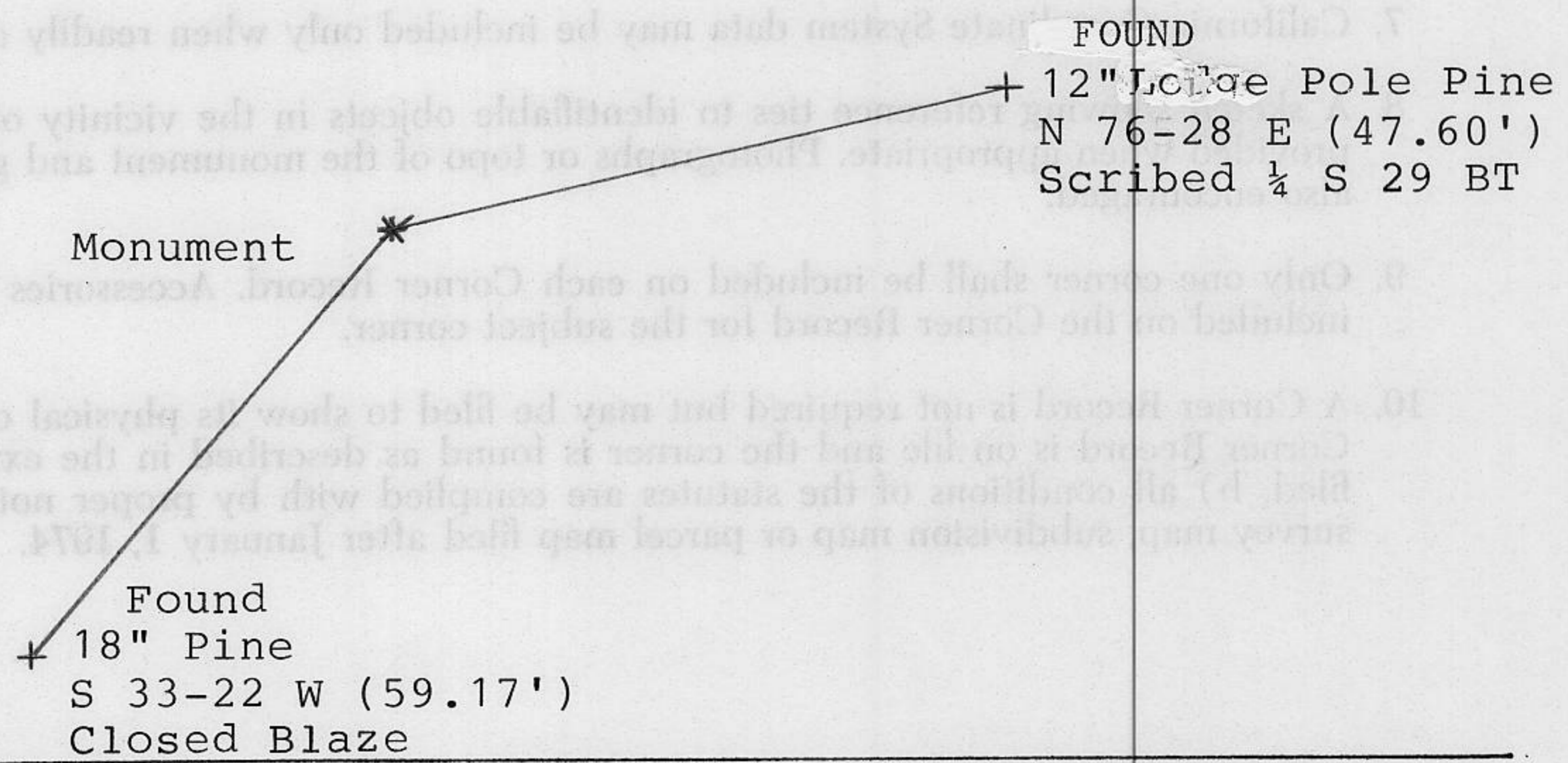
PHYSICAL DESCRIPTION OF MONUMENTS REBUILT OR PERPETUATED

Repaired mound of stones and painted red.  
Set a 6' fence post with a Land Survey Monument and Property Boundary signs.

CALIFORNIA COORDINATE SYSTEM ORDER: FIRST  SECOND  THIRD   
STATIONS USED: NGS (USC & GS)  STATE  COUNTY  OTHER  STATION \_\_\_\_\_ STATION \_\_\_\_\_  
ZONE \_\_\_\_\_ ELEVATION \_\_\_\_\_ NORTHINGS (Y) \_\_\_\_\_ EASTINGS (X) \_\_\_\_\_

(Fold)

SKETCH: (Include reference tie or witness points, remarks and topo of area)



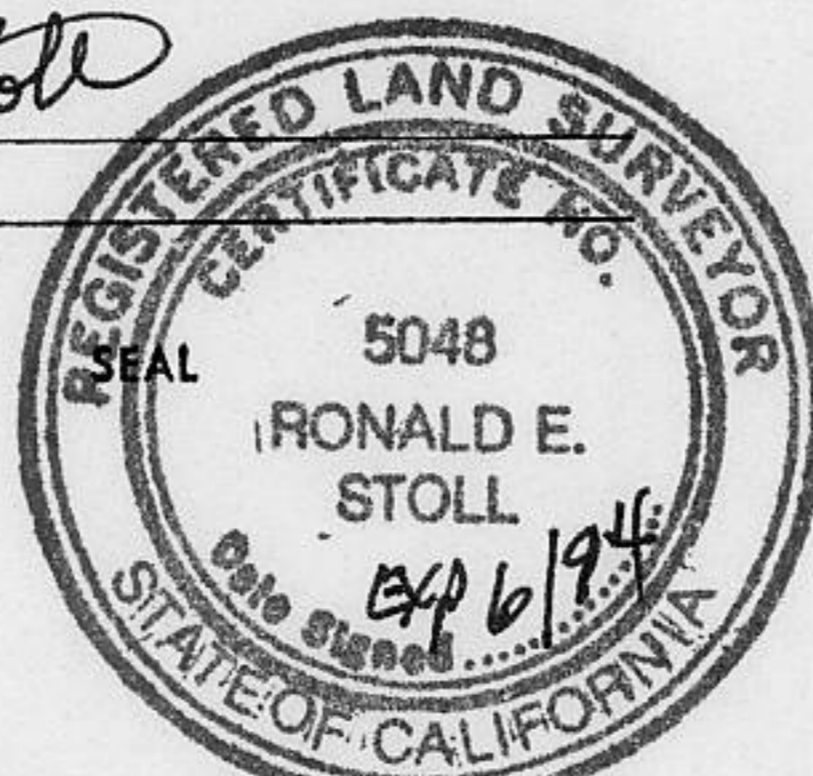
BOOK 4 CORNER RECORDS PAGE 34

#### SURVEYOR'S CERTIFICATE

THIS CORNER RECORD WAS PREPARED BY ME OR UNDER MY DIRECTION IN CONFORMANCE WITH THE LAND SURVEYORS ACT ON July 14 1992.

SIGNED: Ronald E. Stoll

L.S. or R.C.E. No.: LS 5048



#### COUNTY SURVEYOR'S CERTIFICATE

THE CORNER RECORD WAS RECEIVED MAR 14 1994 AND EXAMINED AND FILED MAY 5 1994.

BY: John Williams  
TITLE: DEPUTY COUNTY SURVEYOR

DOCUMENT No. \_\_\_\_\_

STATEMENT ON BACK OF SHEET

YES  NO