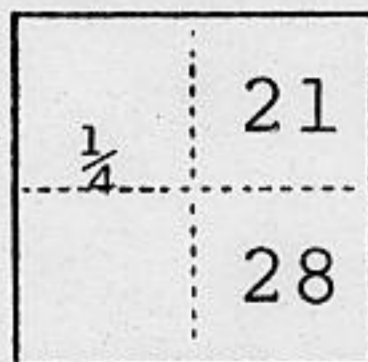


(For County Use Only)

### CORNER RECORD

COUNTY OF Placer T. 14N R. 16E MERIDIAN CALIFORNIA

CORNER TYPE: GOV'T. CORNER  MEANDER  RANCHO  CONTROL  OTHER   
CORNER IDENTIFICATION — DATE OF VISIT July 19 92



CORNER — LEFT AS FOUND  FOUND AND TAGGED  REESTABLISHED OBLITERATED CORNER  REBUILT

PHYSICAL DESCRIPTION OF CORNER FOUND; EVIDENCE AND METHOD USED TO IDENTIFY OR REESTABLISH

Found a B-L-M Brass Cap and pipe, +8", with mound of stones, 1967  
T14N R16E  
1/4 S 21  
S 28  
1967

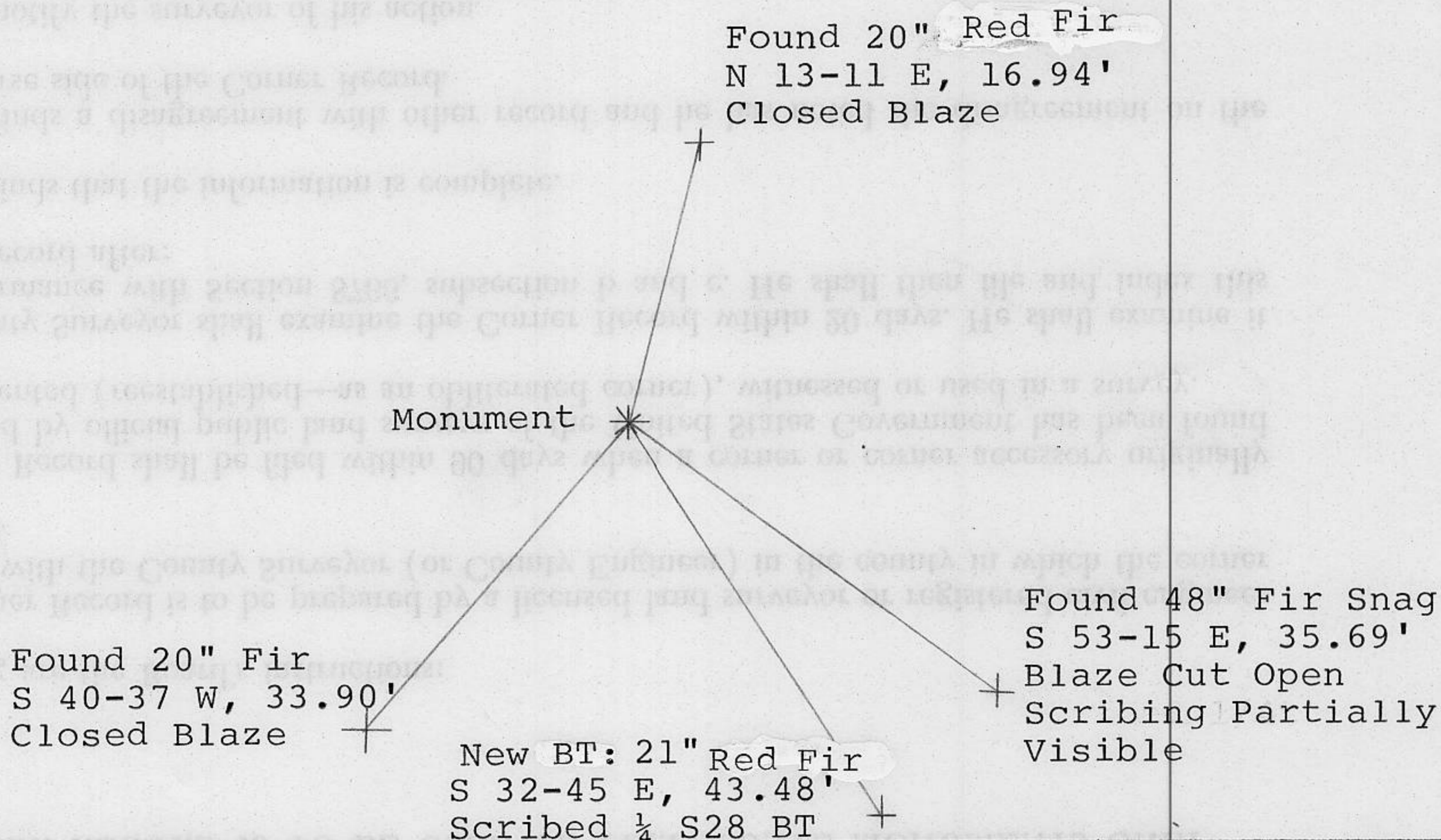
PHYSICAL DESCRIPTION OF MONUMENTS REBUILT OR PERPETUATED

Set a 6' fence post with Land Survey Monument and Property Boundary signs.

CALIFORNIA COORDINATE SYSTEM ORDER: FIRST  SECOND  THIRD   
STATIONS USED: NGS (USC & GS)  STATE  COUNTY  OTHER  STATION \_\_\_\_\_ STATION \_\_\_\_\_  
ZONE \_\_\_\_\_ ELEVATION \_\_\_\_\_ NORTHINGS (Y) \_\_\_\_\_ EASTINGS (X) \_\_\_\_\_

(Fold)

SKETCH: (Include reference tie or witness points, remarks and topo of area)

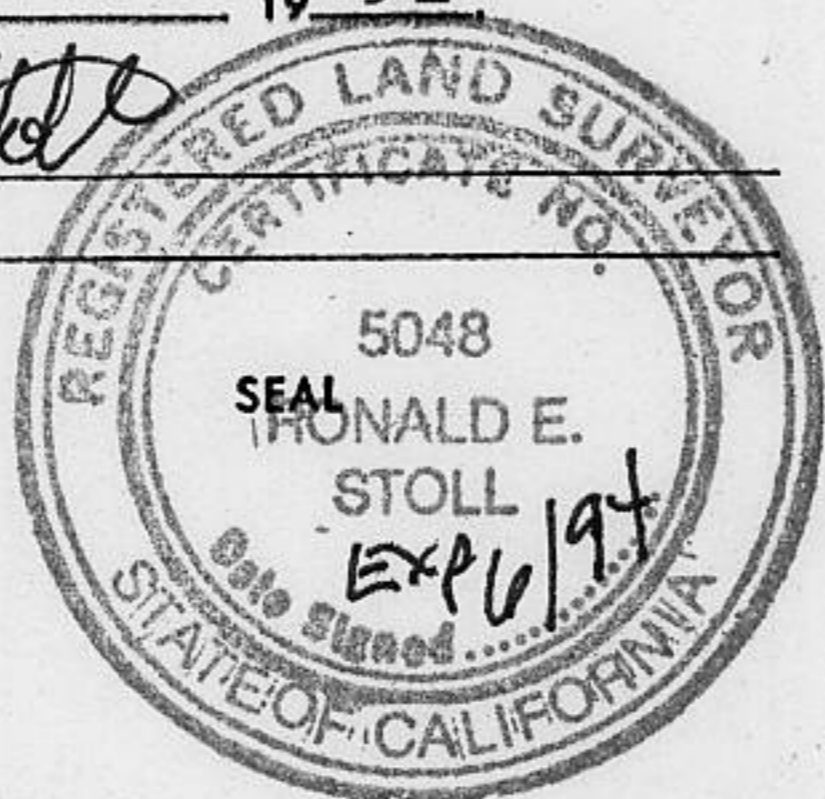


#### SURVEYOR'S CERTIFICATE

THIS CORNER RECORD WAS PREPARED BY ME OR UNDER MY DIRECTION IN CONFORMANCE WITH THE LAND SURVEYORS ACT ON July 14 19 92

SIGNED: [Signature]

L.S. or R.C.E. No.: \_\_\_\_\_



#### COUNTY SURVEYOR'S CERTIFICATE

THE CORNER RECORD WAS RECEIVED MAR. 14 19 94 AND EXAMINED AND FILED MAY 5 19 94

BY: [Signature]  
TITLE: DEPUTY COUNTY SURVEYOR

DOCUMENT No. \_\_\_\_\_

STATEMENT ON BACK OF SHEET

YES  NO

BOOK 4 CORNER RECORDS PAGE 36