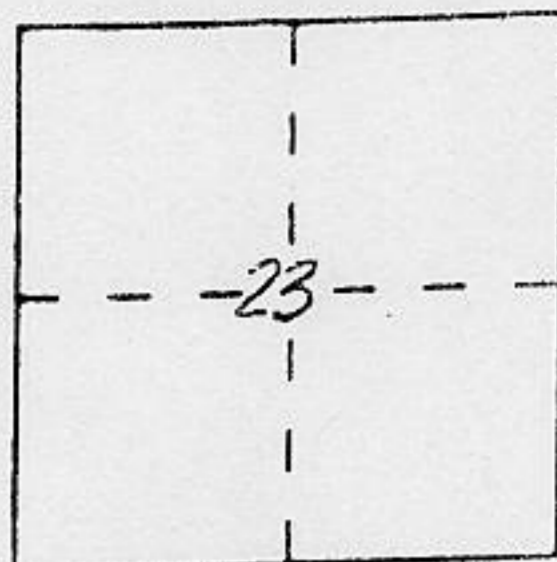


CORNER RECORD

Document Number _____

City of SEC. 23 T.12N. R.7E. MDB. & M. County of PLACER, California

Brief Legal Description LOT 4, TRACT N^o 647, DREAM RANCH ESTATES N^o 2, BK. P, PAGE 62



T.12N. R.7E.
M.D.B. & M.

CORNER TYPE

- Government Corner
- Meander
- Rancho
- Date of Survey 1-31-94
- Control
- Property
- Other

COORDINATES (Optional)

N. _____
 E. _____
 Zone _____ Datum _____
 Elev. _____

Corner — Left as found Found and tagged Established Reestablished Rebuilt

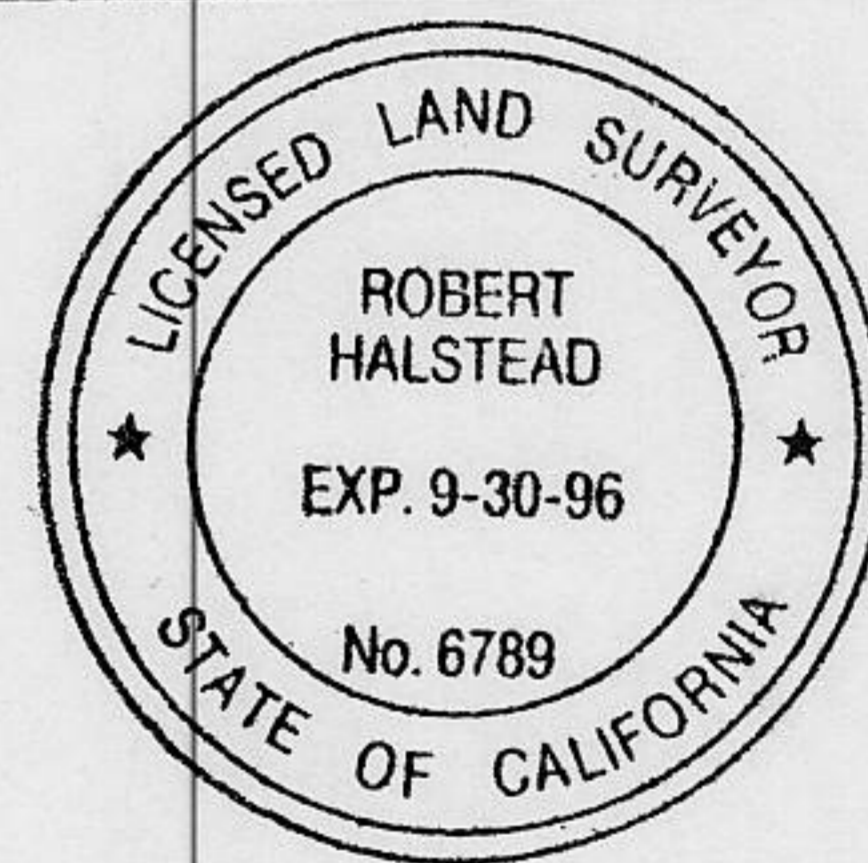
Identification and type of corner found: Evidence used to identify or procedure used to establish or reestablish the corner:
RECORD BEARING AND DISTANCE FROM THE NORTH EAST CORNER
OF LOT 4 USING THE FOUND MONUMENTS ON THE NORTH
LINE OF TRACT 647.

A description of the physical condition of the monument as found and as set or reset: SET 3/4" REBAR
WITH TAG L.S. 6789

SURVEYOR'S STATEMENT

This Corner Record was prepared by me or under my direction in conformance with the Land Surveyors' Act on 3-10 1994.

Signed Robert Halstead L.S. or R.C.E. Number L.S. 6789



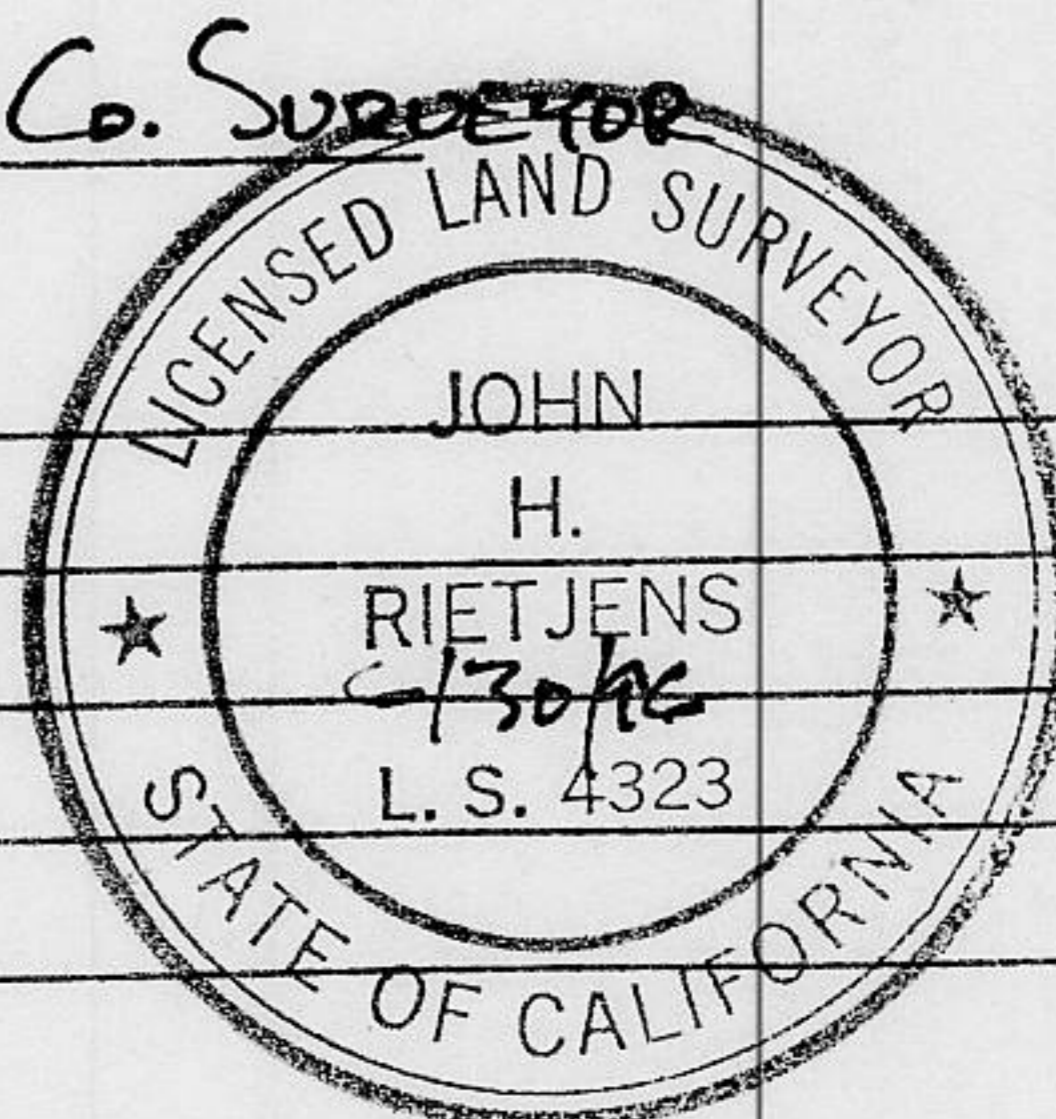
COUNTY SURVEYOR'S STATEMENT

This Corner Record was received MAY 9 1994 and examined

and filed MAY 16 1994.

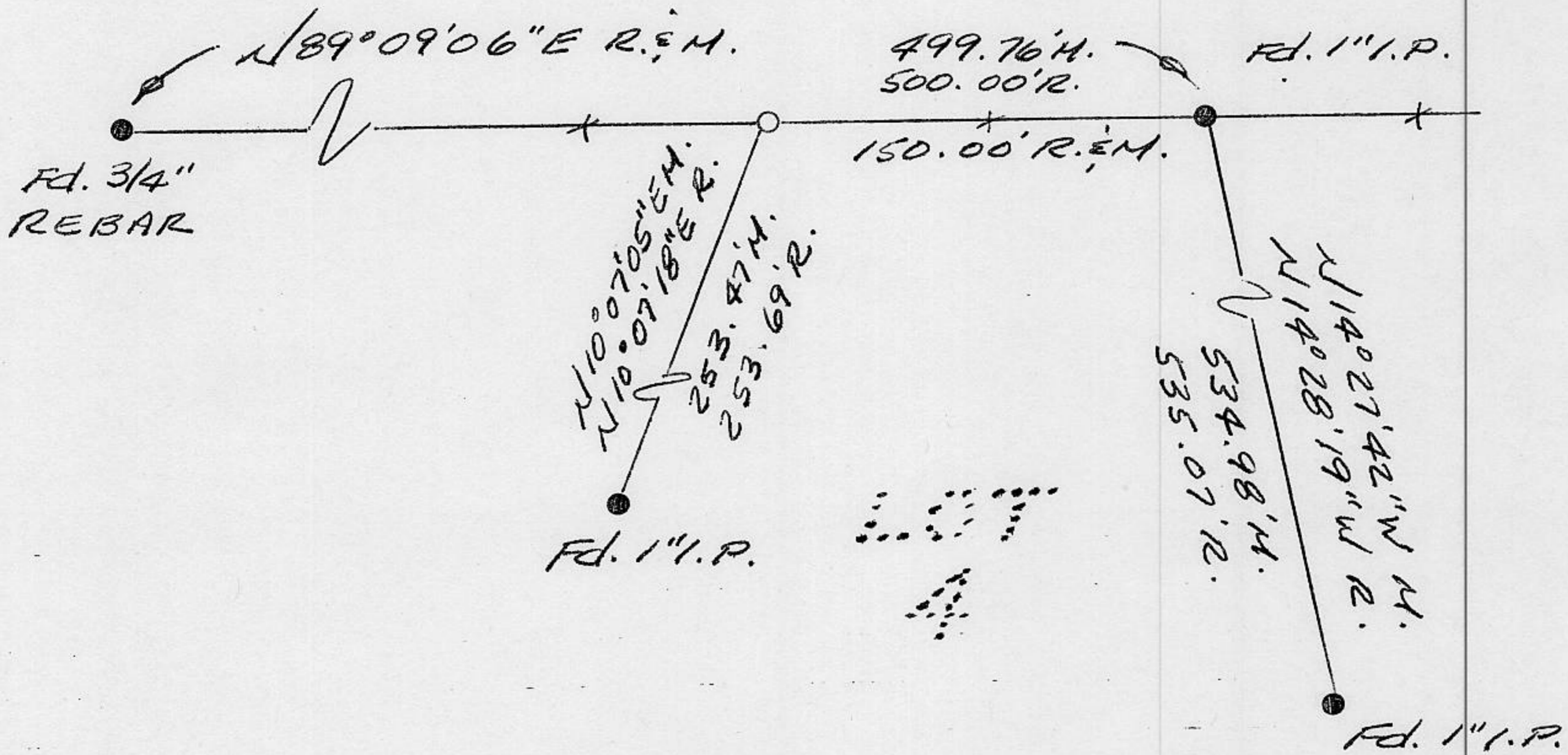
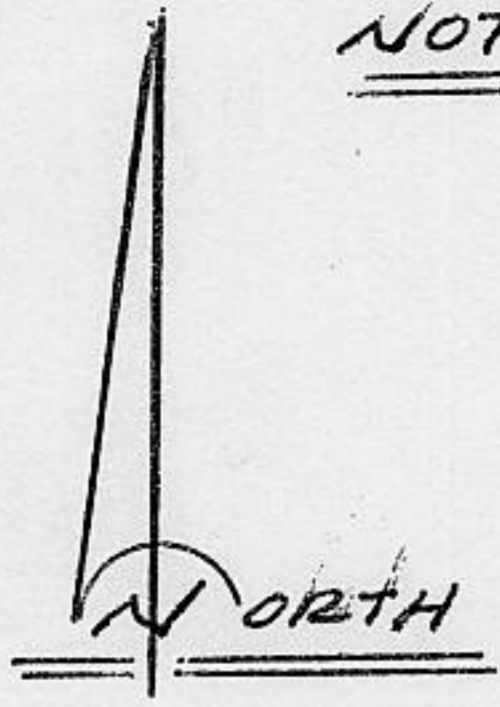
Signed John H. Rietsjens Title Deputy Co. Surveyor

County Surveyor's Comment _____



BOOK 4 CORNER RECORDS PAGE 40

NOT TO SCALE



LEGEND :

- R = RECORD PER BOOK 'P' OF MAPS, AT PAGE 62
- M = FIELD MEASURED
- = SET 3/4" REBAR w/TAG LS 6789
- = Fd. MONUMENT PER MAP