

CORNER RECORD

COUNTY OF PLACER T. 16N R. 17E M.D. MERIDIAN CALIFORNIA

CORNER TYPE: GOV'T. CORNER MEANDER RANCHO CONTROL OTHER
 CORNER IDENTIFICATION - DATE OF VISIT 9/20 1993



DOLLAR POINT UNIT NO. 1
"F" MAPS 73

CORNER - LEFT AS FOUND FOUND AND TAGGED REESTABLISHED OBLITERATED CORNER REBUILT

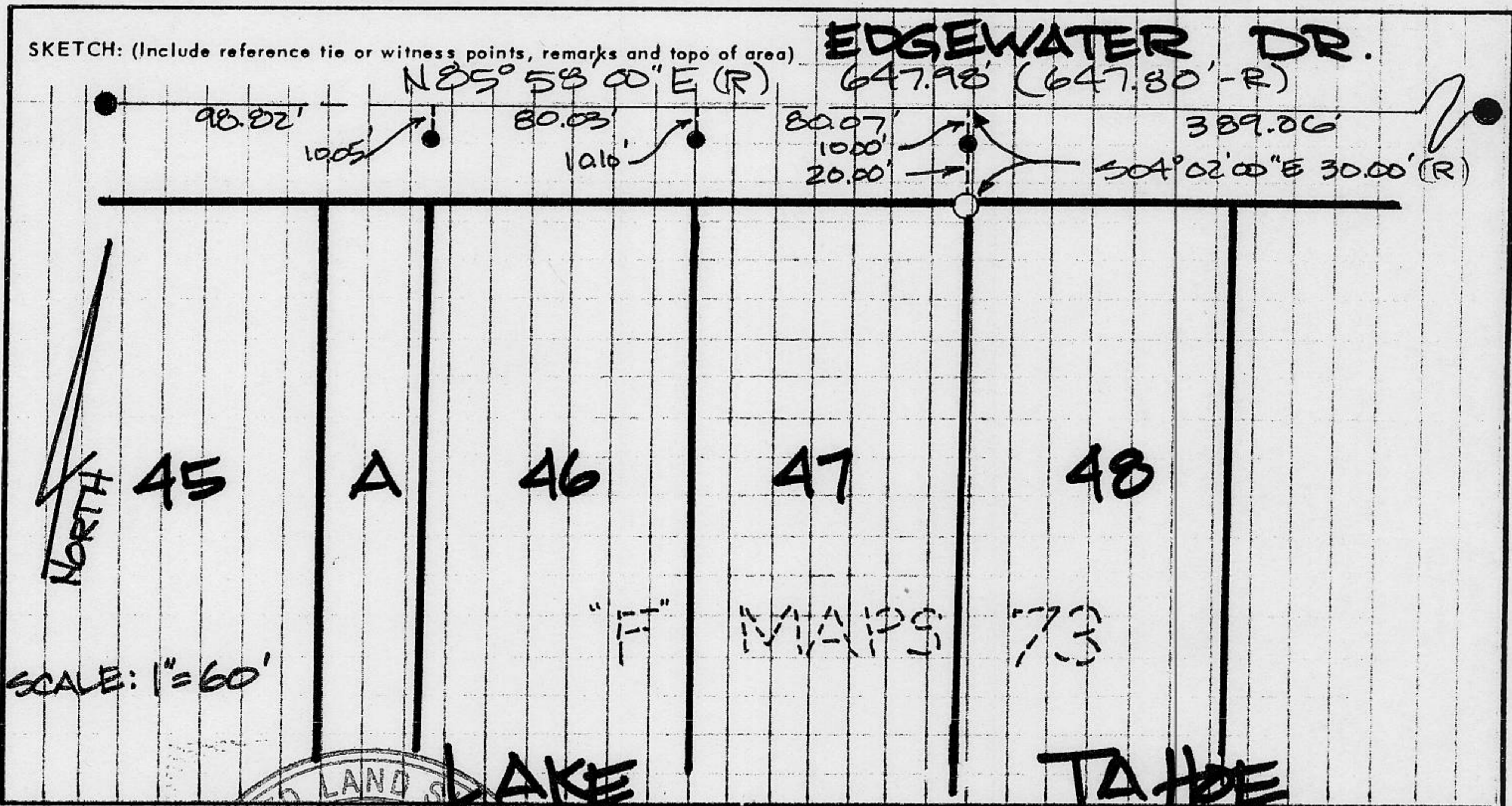
PHYSICAL DESCRIPTION OF CORNER FOUND: EVIDENCE AND METHOD USED TO IDENTIFY OR REESTABLISH

● - FOUND RAILROAD SPIKE IN ASPHALT

PHYSICAL DESCRIPTION OF MONUMENTS REBUILT OR PERPETUATED

○ - FOUND 5/8" REBAR, PLACED TAG "LS 4976"

CALIFORNIA COORDINATE SYSTEM ORDER: FIRST SECOND THIRD
 STATIONS USED: NGS (USC & GS) STATE COUNTY OTHER STATION _____ STATION _____
 ZONE _____ ELEVATION _____ NORTHINGS (Y) _____ EASTINGS (X) _____

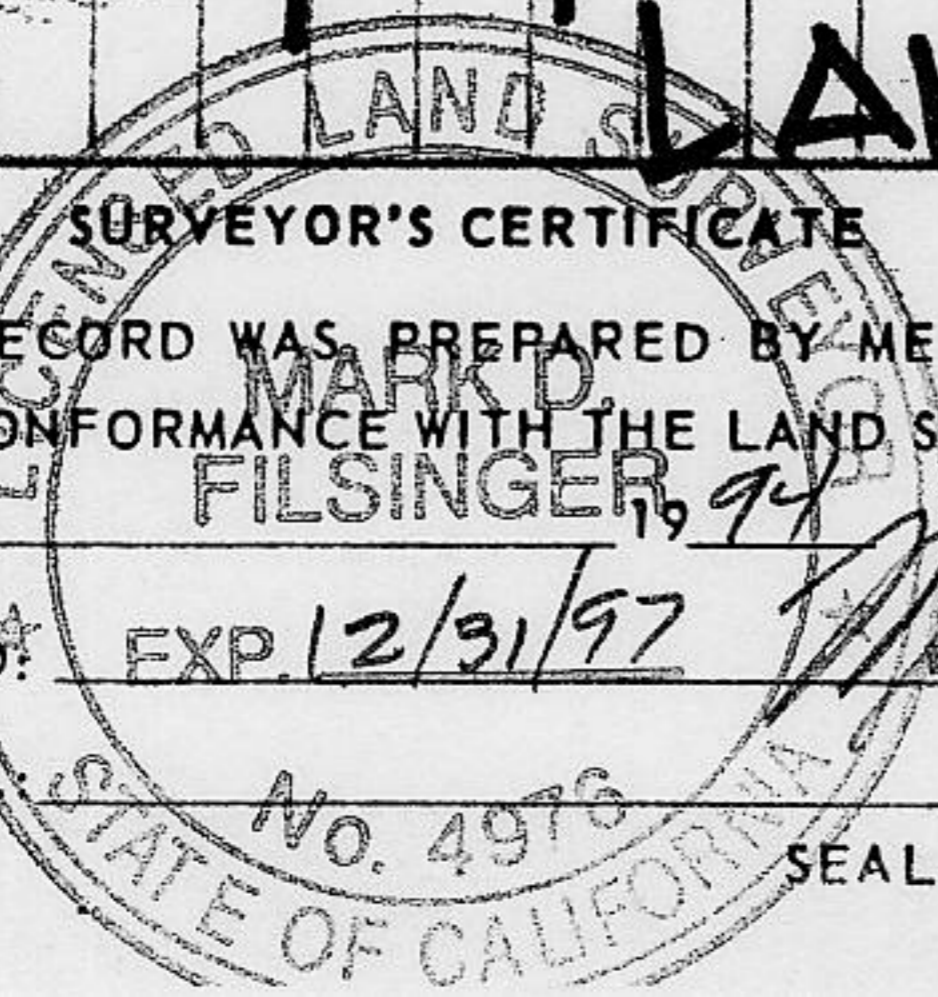


SURVEYOR'S CERTIFICATE
 THIS CORNER RECORD WAS PREPARED BY ME OR UNDER MY DIRECTION IN CONFORMANCE WITH THE LAND SURVEYORS ACT ON 3/7

SIGNED: Mark D. Filsinger

EXP. 12/31/97

L.S. or R.C.E. No. No. 4976



COUNTY SURVEYOR'S CERTIFICATE

THIS CORNER RECORD WAS RECEIVED MAY 11 1994 AND EXAMINED AND FILED MAY 20 1994

BY: Deputy Co. Surveyor

TITLE: DEPUTY CO. SURVEYOR

DOCUMENT No. _____

STATEMENT ON BACK OF SHEET

YES NO

BOOK 4 CORNER RECORDS PAGE 41