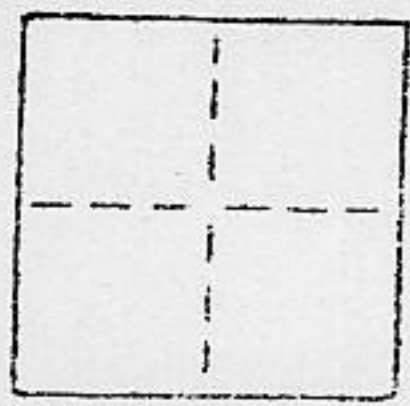


CORNER RECORD

COUNTY OF PLACER T. 10 N. R. 7 E. M. D. M. MERIDIAN CALIFORNIA
 CORNER TYPE: GOVT. CORNER MEANDER RANCHO CONTROL OTHER
 CORNER IDENTIFICATION — DATE OF VISIT _____ 19____

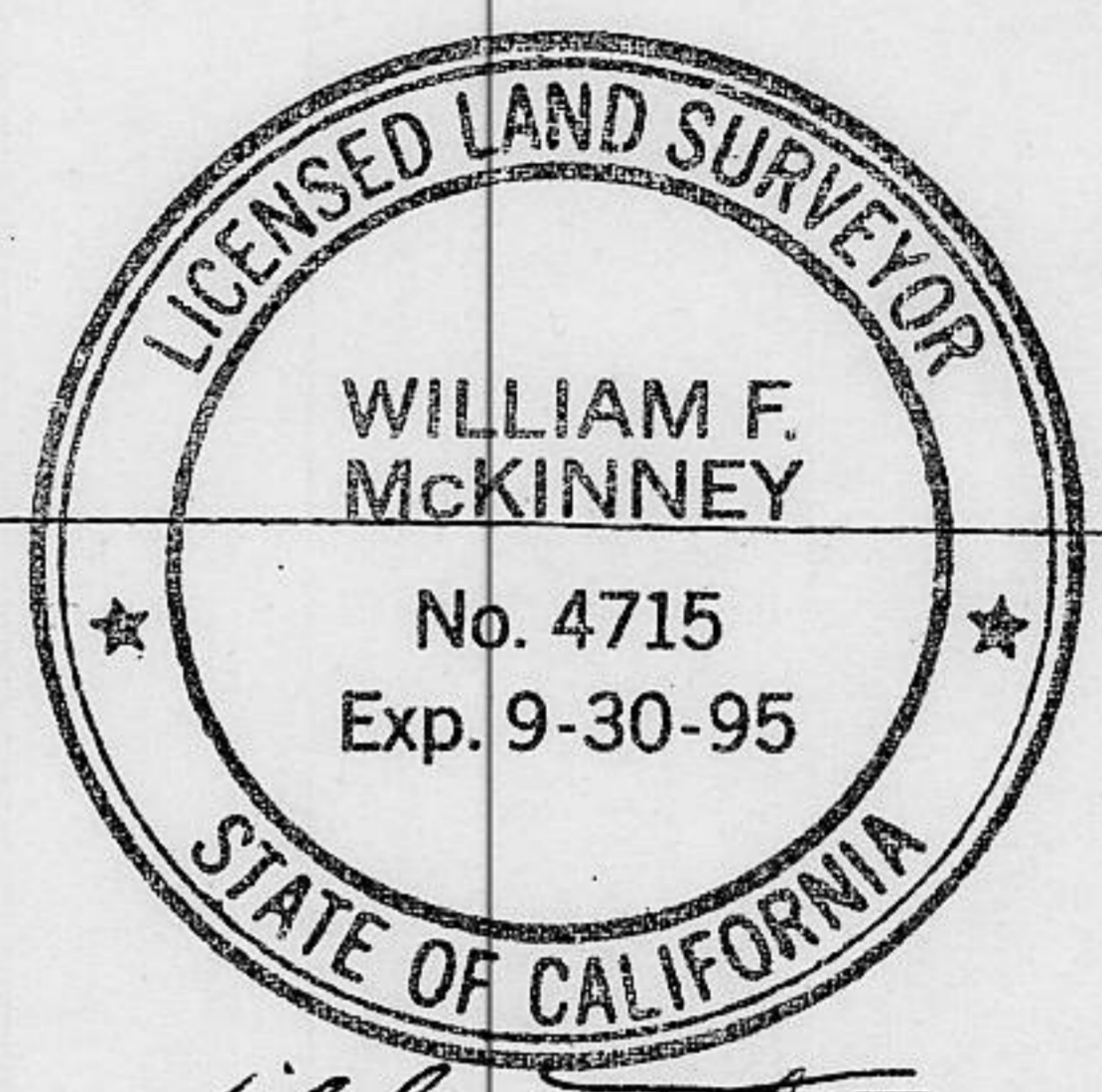


NE 1/4 SEC 12 / " LAKE RIDGE SUBDIVISION F MAPS 2 LOT 68

CORNER — LEFT AS FOUND FOUND AND TAGGED REESTABLISHED OBLITERATED CORNER REBUILT

PHYSICAL DESCRIPTION OF CORNER FOUND; EVIDENCE AND METHOD USED TO IDENTIFY OR REESTABLISH

SEE SKETCH BELOW.

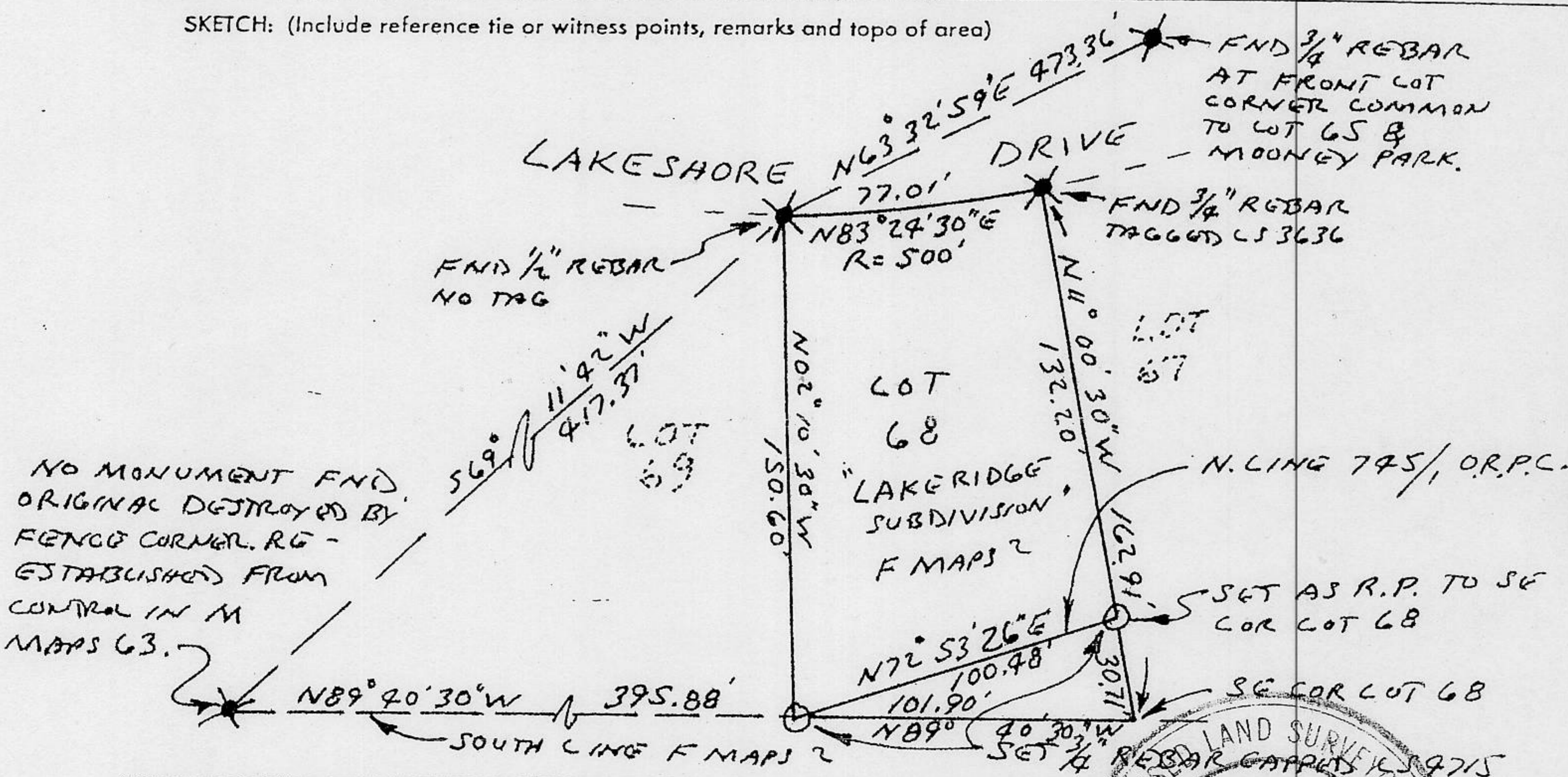


PHYSICAL DESCRIPTION OF MONUMENTS REBUILT OR PERPETUATED

3/4" REBAR CAPPED LS 4715

CALIFORNIA COORDINATE SYSTEM ORDER: FIRST SECOND THIRD
 STATIONS USED: NGS (USC & GS) STATE COUNTY OTHER STATION _____ STATION _____
 ZONE _____ ELEVATION _____ NORTHINGS (Y) _____ EASTINGS (X) _____

SKETCH: (Include reference tie or witness points, remarks and topo of area)



BOOK 4 CORNER RECORDS PAGE 48

SURVEYOR'S CERTIFICATE

THIS CORNER RECORD WAS PREPARED BY ME OR UNDER MY DIRECTION IN CONFORMANCE WITH THE LAND SURVEYORS ACT ON MAY 25 1994

SIGNED: William F. McKinney
 L.S. or R.C.E. No.: LS 4715
 EXP. 9-30-95 SEAL

COUNTY SURVEYOR'S CERTIFICATE

THE CORNER RECORD WAS RECEIVED JUNE 9 1994 AND EXAMINED AND FILED H 12 30 1994 BY DEPUTY COUNTY SURVEYOR

TITLE DEPUTY COUNTY SURVEYOR
 L.S. 4323
 DOCUMENT NO. 6/30/96
 STATEMENT ON BACK SHEET YES NO

