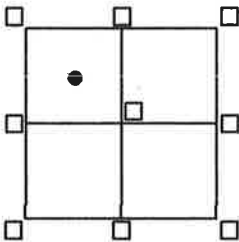


CORNER RECORD

Agency Index BK 24 PG 14
 Document Number 20210025

City of UNINCORPORATED AREA County of PLACER, California

Brief Legal Description LOT 64 PONDEROSA PALISADES SOUTH UNIT #1
BOOK "J" OF MAPS PAGE 89, P.C.D.R.



CORNER TYPE
 SEC.23 Government Corner Control
 T.17N. Meander Property
 R.16E. Rancho Other
 M.D.M. Date of Survey 10/29/2020

COORDINATES (Optional)
 N. _____ E. _____
 Elevation _____
 Units Metric U.S. Survey Foot
 Horizontal Datum _____
 Zone _____ Epoch Date _____
 Vertical Datum _____
 Complies with Public Resources Code 8801-8801
 Complies with Public Resources Code 8890-8902

PLS Act Ref 8765(d) 8771 8773 Other:

Corner/Monument: Left as found Established Rebuilt Pre-Construction
 Found and tagged Reestablished Referenced Post-Construction

Narrative of corner identified and monuments as found, set, reset, replaced, or moved:

See sheet #2 for description(s):

● = FOUND 1/2" REBAR PER "J"/MAPS/89 P.C.D.R., TAG MISSING

● = FOUND 5/8" REBAR NO TAG

● = FOUND CHISELED CROSS ON 4' DIAMETER VOLCANIC ROCK FLUSH W/ GROUND, NO RECORD

⊗ = SET BATHEY MONUMENT (T-BAR) W/ NAIL & TAG STAMPED P.L.S. 8628

⊗ = SET NAIL & TAG IN SOUTHWEST SIDE OF TELEPHONE BOX STAMPED P.L.S. 8628

JN:20173

SURVEYOR'S STATEMENT

This Corner Record was prepared by me or under my direction in conformance with the Professional Land Surveyor's Act on DECEMBER 12 2020

Signed [Signature] P.L.S. or R.S.E. No. 8628
 Lic. Exp. 12/31/21



COUNTY SURVEYOR'S STATEMENT

This Corner Record was received AUGUST 3, 2021

and examined and filed AUGUST 13, 2021

Signed [Signature] P.L.S. or R.C.E. No. 8373

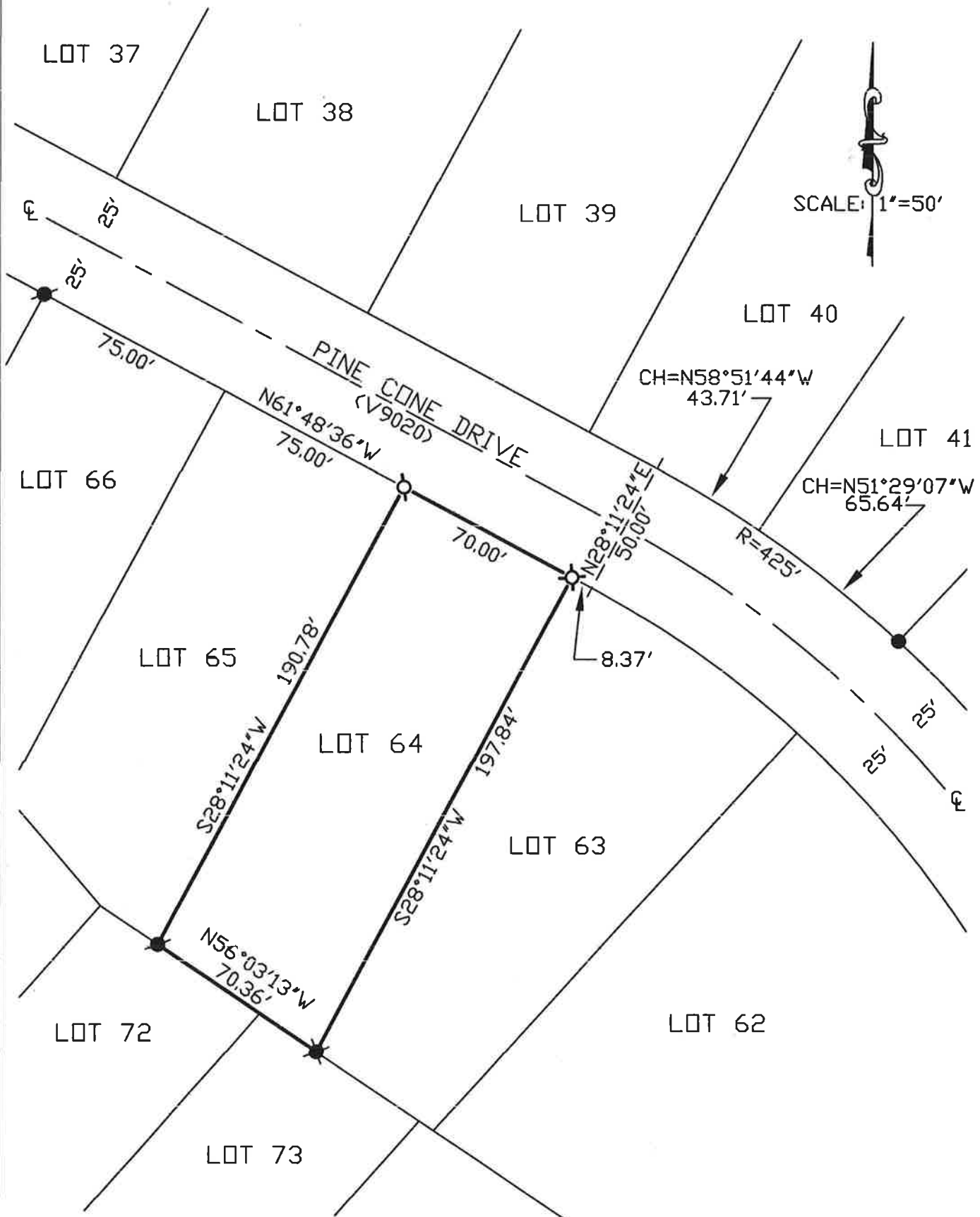
Title Deputy Co. Surveyor

County Surveyor's Comment _____



BOOK 24 OF CORNER RECORDS PAGE 14

NOTE: THE BEARINGS AND DISTANCES SHOWN ARE RECORD PER "J"/MAPS/89, P.C.D.R. NO MATERIAL DISCREPANCIES WITH RECORD INFORMATION WERE FOUND.



BOOK 24 OF OPENED RECORDS PAGE 14