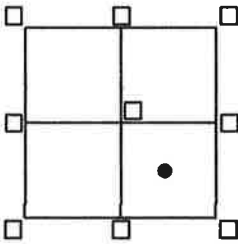


# CORNER RECORD

Agency Index BK 74 PG 17  
 Document Number 20210022

City of UNINCORPORATED AREA County of PLACER COUNTY, California

Brief Legal Description LOT 2 BLOCK "B" ICE LAKES UNIT #2  
BOOK "G" OF MAPS PAGE 1 P.C.D.R.



**CORNER TYPE**  
 SEC.27 Government Corner  Control   
 T.17N. Meander  Property   
 R.14E. Rancho  Other   
 M.D.M. Date of Survey 10/13/2020

**COORDINATES (Optional)**  
 N. \_\_\_\_\_ E. \_\_\_\_\_  
 Elevation \_\_\_\_\_  
 Units  Metric  U.S. Survey Foot  
 Horizontal Datum \_\_\_\_\_  
 Zone \_\_\_\_\_ Epoch Date \_\_\_\_\_  
 Vertical Datum \_\_\_\_\_  
 Complies with Public Resources Code 8801-8891  
 Complies with Public Resources Code 8890-8902

PLS Act Ref:  8765(d)  8771  8773  Other:

Corner/Monument:  Left as found  Established  Rebuilt  Pre-Construction  
 Found and tagged  Reestablished  Referenced  Post-Construction

Narrative of corner identified and monuments as found, set, reset, replaced, or moved:  
 See sheet #2 for description(s):

- = FOUND 3/4" IRON PIPE, W/ PLASTIC PLUG L.S. 5549 PER 2/CR/163
  - = FOUND 3/4" IRON PIPE, W/ PLASTIC PLUG L.S. 5549 PER 8/CR/67
  - = FOUND 5/8" REBAR NO TAG, PER 8/CR/67
- = SET BATHEY MONUMENT (T-BAR), W/ NAIL & TAG STAMPED P.L.S. 8628  
 JN:20153

### SURVEYOR'S STATEMENT

This Corner Record was prepared by me or under my direction in conformance with  
 the Professional Land Surveyor's Act on DECEMBER 12 2020  
 Signed [Signature] PLS. or R.C.E. No. 8628  
LIC. EXP. 12/31/21



### COUNTY SURVEYOR'S STATEMENT

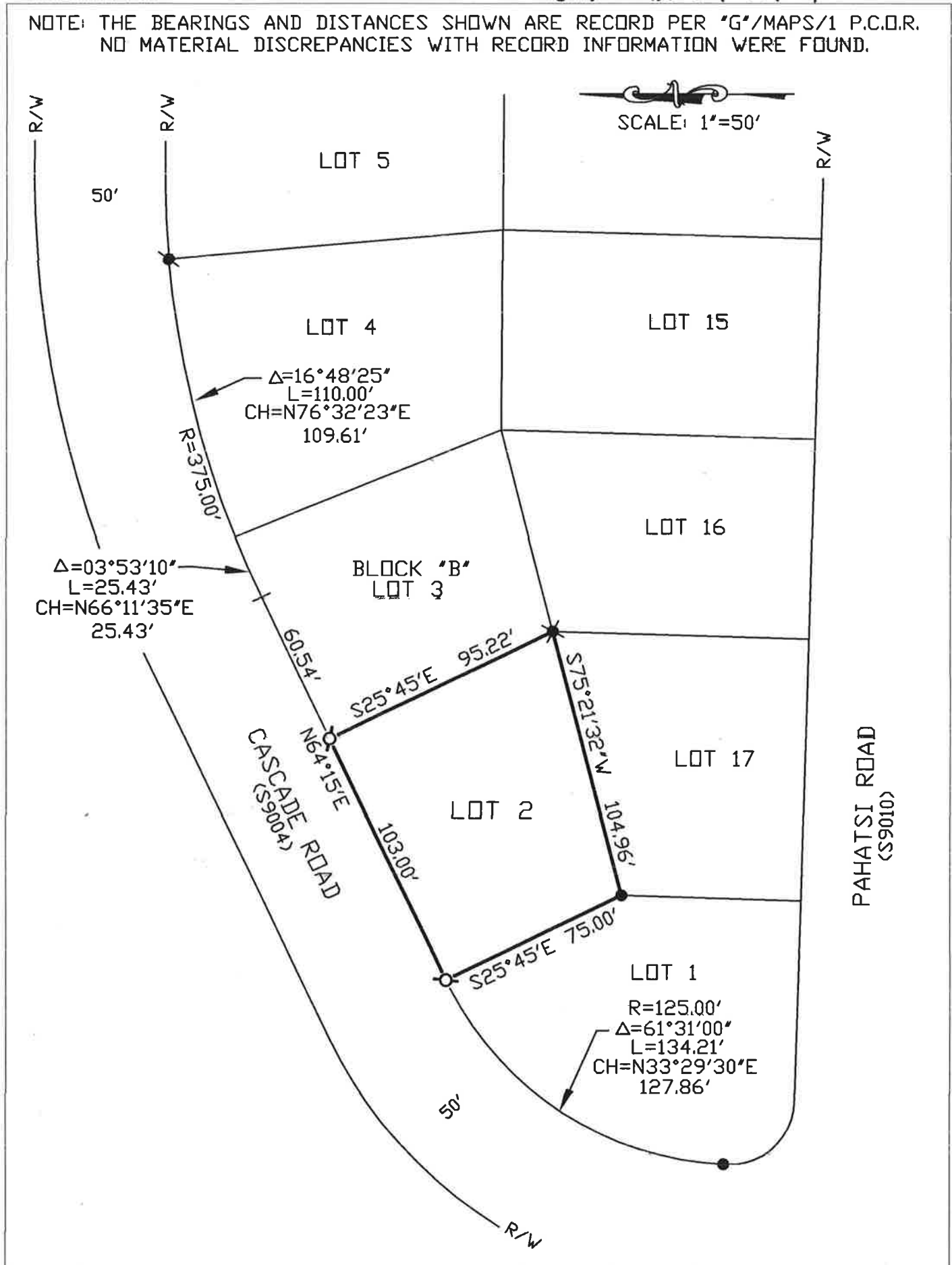
This Corner Record was received AUGUST 3, 2021  
 and examined and filed AUGUST 13, 2021  
 Signed [Signature] PLS. or R.C.E. No. 8373  
 Title Deputy County Surveyor



County Surveyor's Comment \_\_\_\_\_

BOOK 74 OF CORNER RECORDS PAGE 17

NOTE: THE BEARINGS AND DISTANCES SHOWN ARE RECORD PER "G"/MAPS/1 P.C.D.R. NO MATERIAL DISCREPANCIES WITH RECORD INFORMATION WERE FOUND.



BOOK 24 OF CORNER RECORDS PAGE 17