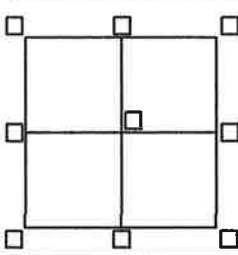


CORNER RECORD

Agency Index Book PG 18
 Document Number 20210044

City of UNINCORPORATED AREA County of PLACER, California

Brief Legal Description LOT 359, 360 & 361 DOLLAR POINT UNIT #6
BOOK "I" OF MAPS PAGE 15 P.C.D.R.



CORNER TYPE
 SEC.33 Government Corner Control
 T.16N. Meander Property
 R.17E. Rancho Other
 M.D.M. Date of Survey 6/18/21

COORDINATES (Optional)
 N. _____ E. _____
 Elevation _____
 Units Metric U.S. Survey Foot
 Horizontal Datum _____
 Zone _____ Epoch Date _____
 Vertical Datum _____
 Complies with Public Resources Code 8801-8891
 Complies with Public Resources Code 8890-8902

PLS Act Ref: 8765(d) 8771 8773 Other:

Corner/Monument: Left as found Established Rebuilt Pre-Construction
 Found and tagged Reestablished Referenced Post-Construction

Narrative of corner identified and monuments as found, set, reset, replaced, or moved:
 See sheet #2 for description(s):

- = Found 3/4" Iron Pin, W/Nail & Tag R.C.E. 8189 Per "I"/MAPS/15 P.C.D.R.
 - = Found 5/8" Rebar W/Plas. Cap P.L.S. 5886 Per 2/CR/87
 - = Found 1/2" Iron Pin No Tag, Believe to be Original Per "I"/MAPS/15 P.C.D.R.
 - ▲ = Found Mag Nail W/Washer Stamped "Placer County Surveyor" Per 23/CR/66 & Per 23/CR/67
 - = Dimension Point Only
 - = Set Bathey Monument (T-bar), W/Nail & Tag stamped P.L.S. 8628
- JN:21104

SURVEYOR'S STATEMENT

This Corner Record was prepared by me or under my direction in conformance with the Professional Land Surveyor's Act on JUNE 22, 2021
 Signed [Signature] PLS. or R.C.E. No. 8628
LIC. EXP. 12/31/21



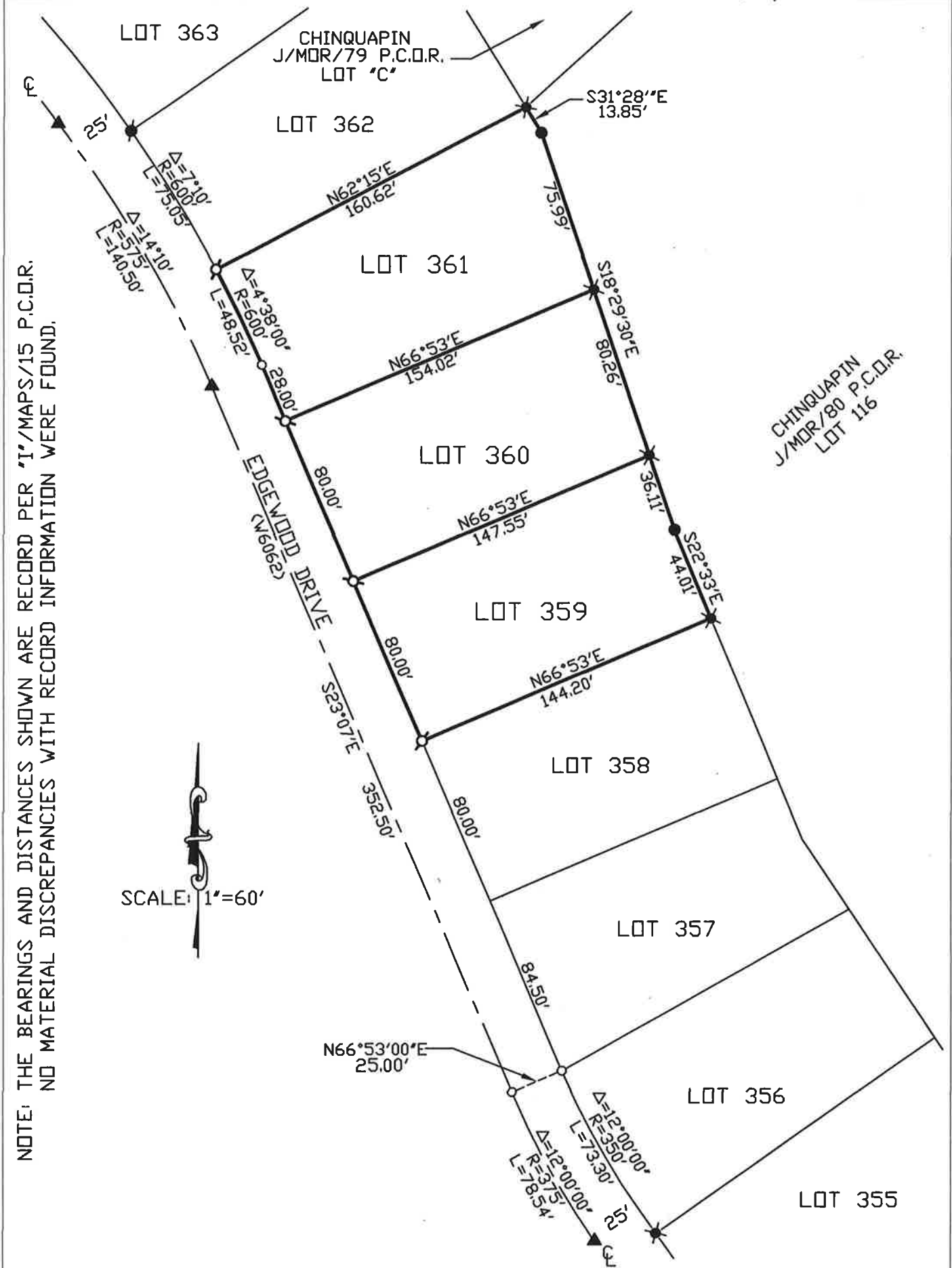
COUNTY SURVEYOR'S STATEMENT

This Corner Record was received AUGUST 3, 2021
 and examined and filed AUGUST 13, 2021
 Signed [Signature] PLS. or R.C.E. No. 8373
 Title Deputy County Surveyor



County Surveyor's Comment _____

BOOK 24 OF CORNER RECORDS PAGE 18



BOOK 24 OF CORNER RECORDS PAGE 18