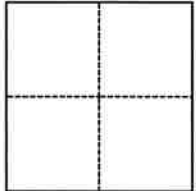


CORNER RECORD

Agency Index BK 24 PG 19
 Document Number 2021-0048

City of Unincorporated area County of Placer, California
 Brief Legal Description Parcel 3, 1 PM 51, PCR - Por Section 4, T. 13 N., R. 09 E., MDM



CORNER TYPE

- Government Corner
- Meander
- Rancho
- Control
- Property
- Other

Date of Survey March 23, 2021
Section 4, T. 13 N., R. 09 E., MDM

COORDINATES (Optional)

N. _____ E. _____
 Elevation _____
 Units Metric U.S. Survey Foot
 Horizontal Datum _____
 Zone _____ Epoch Date _____
 Vertical Datum _____
 Complies with Public Resources Code §§8801-8819
 Complies with Public Resources Code §§8890-8902

- PLS Act Ref.: 8765(d) 8771 8773 Other:
- Corner/Monument: Left as found Established Rebuilt Pre-Construction
 Found and tagged Reestablished Referenced Post-Construction

Narrative of corner identified and monument as found, set, reset, replaced, or removed:
 See sheet #2 for description(s):

Set Mag Nail and washer in asphalt roadway stamped LS 6596 at the Northwest corner of Parcel 3.

SURVEYOR'S STATEMENT

This Corner Record was prepared by me or under my direction in conformance with
 the Professional Land Surveyors' Act on May 3, 2021
 Signed *Christine Marion Johnson* P.L.S. or R.C.E. No. 6596

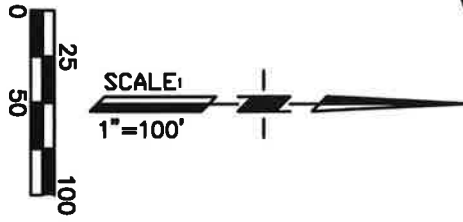


COUNTY SURVEYOR'S STATEMENT

This Corner Record was received August 26, 2021
 and examined and filed August 31, 2021
 Signed *Benjamin J. Bardakjian* P.L.S. or R.C.E. No. 8373
 Title Deputy County Surveyor
 County Surveyor's Comment _____



Book 24 OF CORNER RECORDS PAGE 19

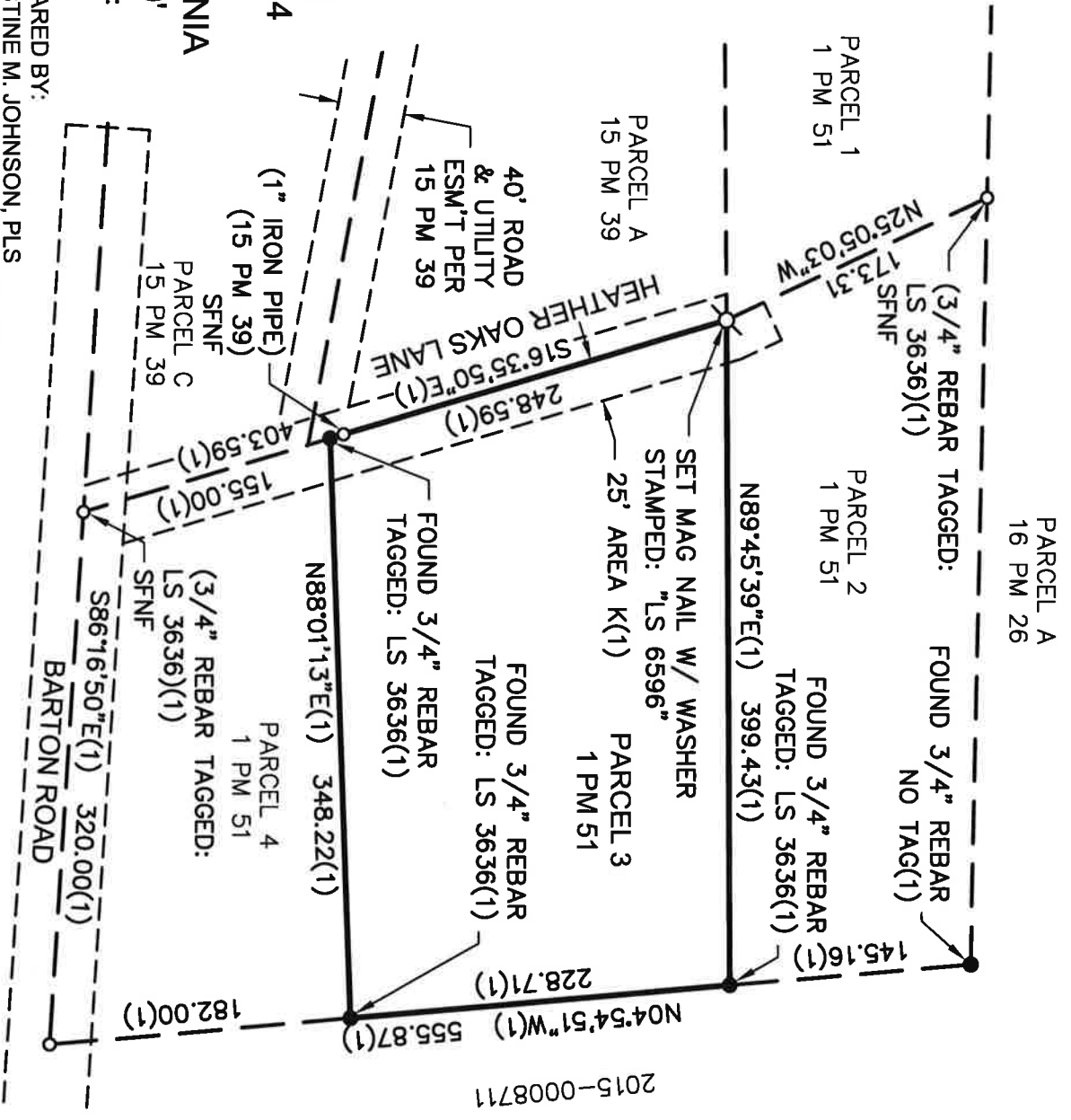


PARCEL 3 - 1 PM 51

CORNER RECORD
 A PORTION OF SECTION 4
 T.13 N., R.09 E., M.D.M.
 PLACER COUNTY CALIFORNIA
 MAY 2021 SCALE: 1"=100'
 PREPARED AT THE REQUEST OF:
 JIM & SALLY ELLSWORTH

PREPARED BY:
 CHRISTINE M. JOHNSON, PLS
 CLEAR PATH LAND EVOLVEMENT, INC.
 500 AUBURN FOLSOM RD., STE 100
 AUBURN, CA 95603 (530) 887-1410

LEGEND
 (1) . . . RECORD PER 1 PM 51, PCR



Book 24 of Corner Records Page 19