

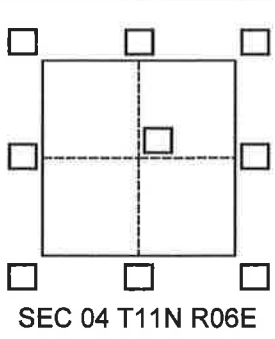
CORNER RECORD

Agency Index Book 24 PG 7

Document Number 20210045

City of _____ County of PLACER, California

Brief Legal Description PARCEL 1, 34 PM 42



CORNER TYPE

- Government Corner Control
- Meander Property
- Rancho Other

Date of Survey July 5, 2021

COORDINATES (Optional)

- N. _____ E. _____
- Elevation _____
- Units Metric U.S. Survey Foot
- Horizontal Datum _____
- Zone _____ Epoch Date _____
- Vertical Datum _____
- Complies with Public Resources Code §§8801-8819
- Complies with Public Resources Code §§8890-8902

PLS Act Ref.: 8765(d) 8771 8773 Other:

Corner/Monument: Left as found Established Rebuilt Pre-Construction

Found and tagged Reestablished Referenced Post-Construction

Narrative of corner identified and monument as found, set, reset, replaced, or removed:

See sheet #2 for description(s):

SET PK NAIL & WASHERS STAMPED PLS 8297 AS REFERENCE POINTS TO EXISTING MONUMENTS AS SHOWN PER 34 PM 42.

SURVEYOR'S STATEMENT

This Corner Record was prepared by me or under my direction in conformance with the Professional Land Surveyors' Act on July 14, 2021

Signed [Signature] P.L.S. or R.C.E. No. 8297



COUNTY SURVEYOR'S STATEMENT

This Corner Record was received July 15, 2021

and examined and filed July 15, 2021

Signed [Signature] P.L.S. or R.C.E. No. 8373

Title Deputy County Surveyor

County Surveyor's Comment



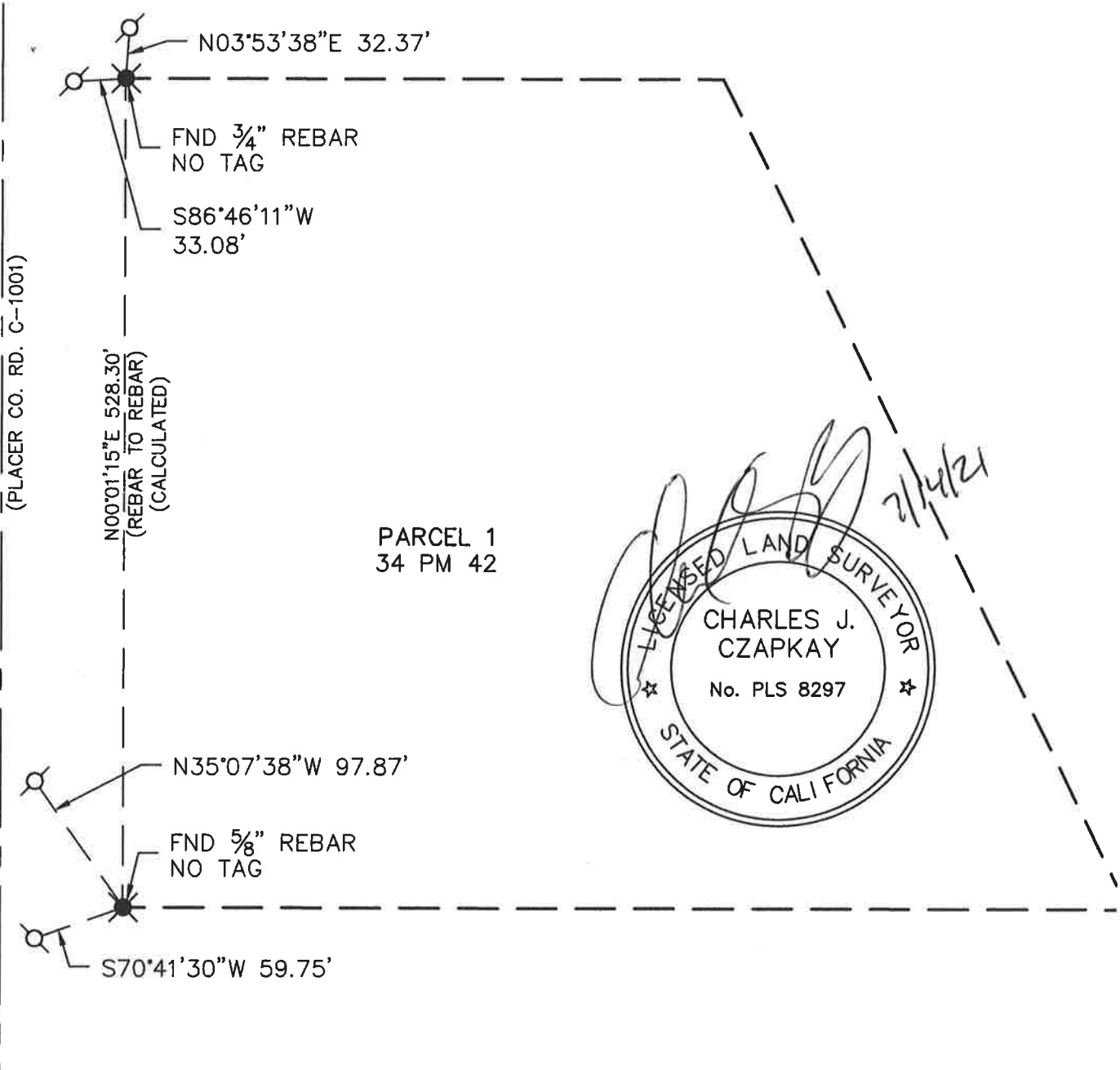
Book 24 of Corner Records Page 7

NORTH
AREA WEST ENGINEERS, INC.

- LEGEND
- FOUND MONUMENT AS NOTED..... ✖
 - SET PK NAIL WASHER
 - STAMPED PLS 8297 ○
 - DIMENSION POINT ○
 - FOUND FND

NOTE:
 1. THIS CORNER RECORD IS NOT ESTABLISHING PROPERTY CORNERS OF PARCEL 1, 34 PM 42. THIS CORNER RECORD IS TO SET REFERENCE POINTS TO EXISTING FOUND MONUMENTS.

INDUSTRIAL AVENUE
(PLACER CO. RD. C-1001)



N00°01'15"E 528.30'
(REBAR TO REBAR)
(CALCULATED)

PARCEL 1
34 PM 42



Book 24 of Corner Records Page 7