

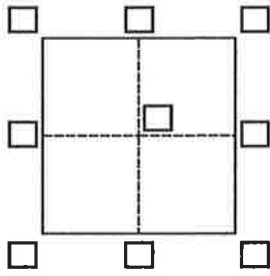
# CORNER RECORD

Agency Index BK 74 PG 8

Document Number 20210046

City of \_\_\_\_\_ County of PLACER, California

Brief Legal Description PARCEL 1, 34 PM 42



SEC 04 T11N R06E

### CORNER TYPE

- Government Corner  Control   
 Meander  Property   
 Rancho  Other

Date of Survey July 5, 2021

### COORDINATES (Optional)

- N. \_\_\_\_\_ E. \_\_\_\_\_  
 Elevation \_\_\_\_\_  
 Units  Metric  U.S. Survey Foot   
 Horizontal Datum \_\_\_\_\_  
 Zone \_\_\_\_\_ Epoch Date \_\_\_\_\_  
 Vertical Datum \_\_\_\_\_

- Complies with Public Resources Code §§8801-8819  
 Complies with Public Resources Code §§8890-8902

- PLS Act Ref.:  8765(d)  8771  8773  Other:  
 Corner/Monument:  Left as found  Established  Rebuilt  Pre-Construction  
 Found and tagged  Reestablished  Referenced  Post-Construction

Narrative of corner identified and monument as found, set, reset, replaced, or removed:

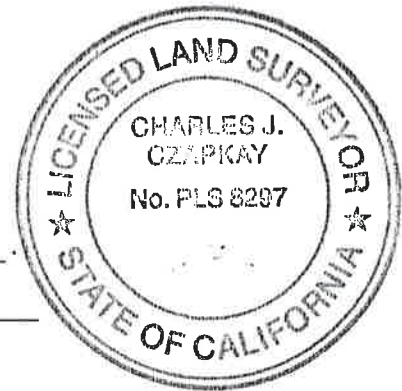
See sheet #2 for description(s):

REESTABLISHED THE FOUND POSITION OF THE DESTROYED REBARS AS REFLECTED ON CORNER RECORD 20210045 (24 CR 7). SET 1" DIAMETER BRASS DISK STAMPED PLS 8297, AWE, INC.

### SURVEYOR'S STATEMENT

This Corner Record was prepared by me or under my direction in conformance with the Professional Land Surveyors' Act on July 14, 2021

Signed [Signature] P.L.S. or R.C.E. No. 8297



### COUNTY SURVEYOR'S STATEMENT

This Corner Record was received July 15, 2021

and examined and filed July 15, 2021

Signed [Signature] P.L.S. or R.C.E. No. 8373

Title Deputy County Surveyor  
 County Surveyor's Comment \_\_\_\_\_



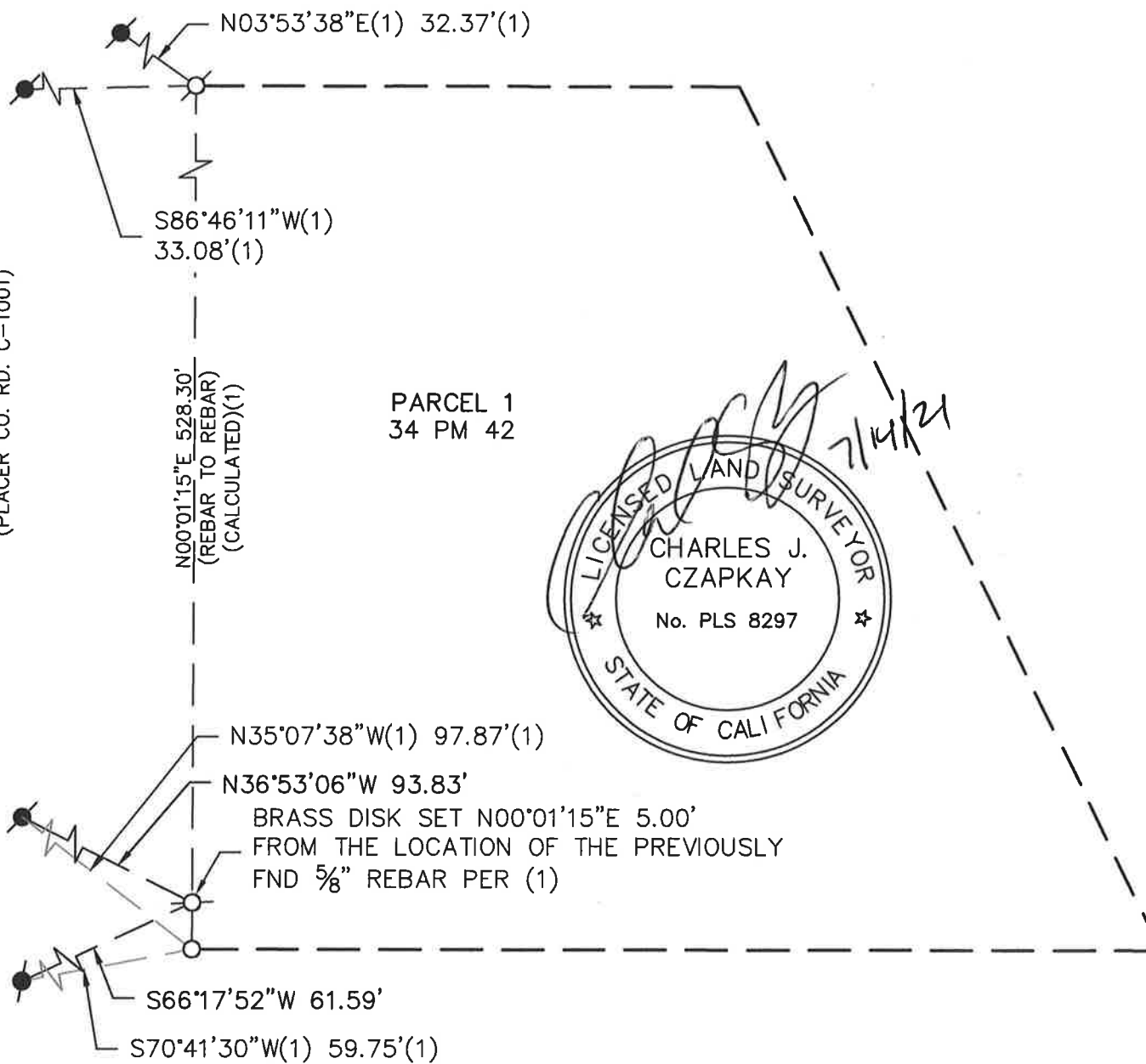
BOOK 24 OF CORNER RECORDS PAGES 8

NORTH  
AREA WEST ENGINEERS, INC.

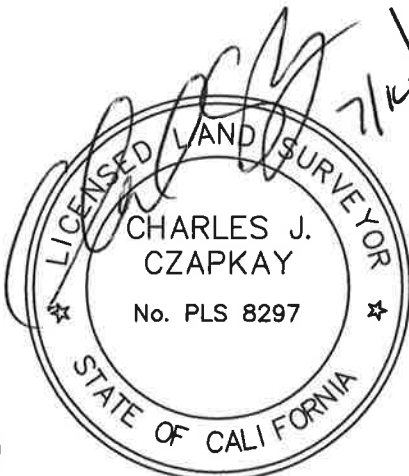
- LEGEND
- FND MONUMENT AS NOTED ..... ✕
  - FND PK NAIL WASHER ..... ●
  - STAMPED PLS 8297(3) ..... ●
  - SET 1" DIA. BRASS DISK STAMPED PLS 8297, AWE, INC. ..... ⊙
  - DIMENSION POINT ..... ○
  - FOUND ..... FND
  - RECORD PER 24 CR 1 ..... (1)

NOTE:  
 1. THIS CORNER RECORD IS NOT ESTABLISHING PROPERTY CORNERS OF PARCEL 1, 34 PM 42. THIS CORNER RECORD IS REESTABLISHING THE POSITION OF THE FOUND MONUMENTS THAT WERE IN PLACE BEFORE CONSTRUCTION.

INDUSTRIAL AVENUE  
(PLACER CO. RD. C-1001)



PARCEL 1  
34 PM 42



*BOOK 24 OF GREEN RECORDS PAGE 8*