

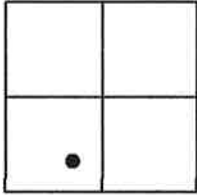
CORNER RECORD

Agency Index BK 24 PG 10
Document Number 20210043

City of UNINCORPORATED AREA

County of PLACER COUNTY, California

Brief Legal Description LOT 500 LAHONTAN II
BOOK "W" OF MAPS PAGE 23 P.C.D.R.



CORNER TYPE

SEC.24 Government Corner Control
 T.17N. Meander Property
 R.16E. Rancho Other
 M.D.M. Date of Survey 3/29/2021

COORDINATES (Optional)

N. _____ E. _____
 Elevation _____
 Units Metric U.S. Survey Foot
 Horizontal Datum _____
 Zone _____ Epoch Date _____
 Vertical Datum _____
 Complies with Public Resources Code 8801-8891
 Complies with Public Resources Code 8890-8902

PLS Act Ref: 8765(d) 8771 8773 Other:

Corner/Monument: Left as found Established Rebuilt Pre-Construction
 Found and tagged Reestablished Referenced Post-Construction

Narrative of corner identified and monuments as found, set, reset, replaced, or moved:

See sheet #2 for description(s):

● = FOUND 3/4" REBAR W/ PLASTIC CAP L.S. 4715 PER "W"/MAPS/23 P.C.D.R.

● = FOUND RAILROAD SPIKE PER "W"/MAPS/23 P.C.D.R.

⊙ = SET BATHEY MONUMENT (T-BAR), W/ NAIL & TAG STAMPED P.L.S. 8628
JN:21002

SURVEYOR'S STATEMENT

This Corner Record was prepared by me or under my direction in conformance with the Professional Land Surveyor's Act on JUNE 22, 2021

Signed [Signature] P.L.S. or R.C.E. No. 8628
LIC. EXP. 12/31/21



COUNTY SURVEYOR'S STATEMENT

This Corner Record was received AUGUST 3, 2021

and examined and filed AUGUST 13, 2021

Signed [Signature] P.L.S. or R.C.E. No. 8373

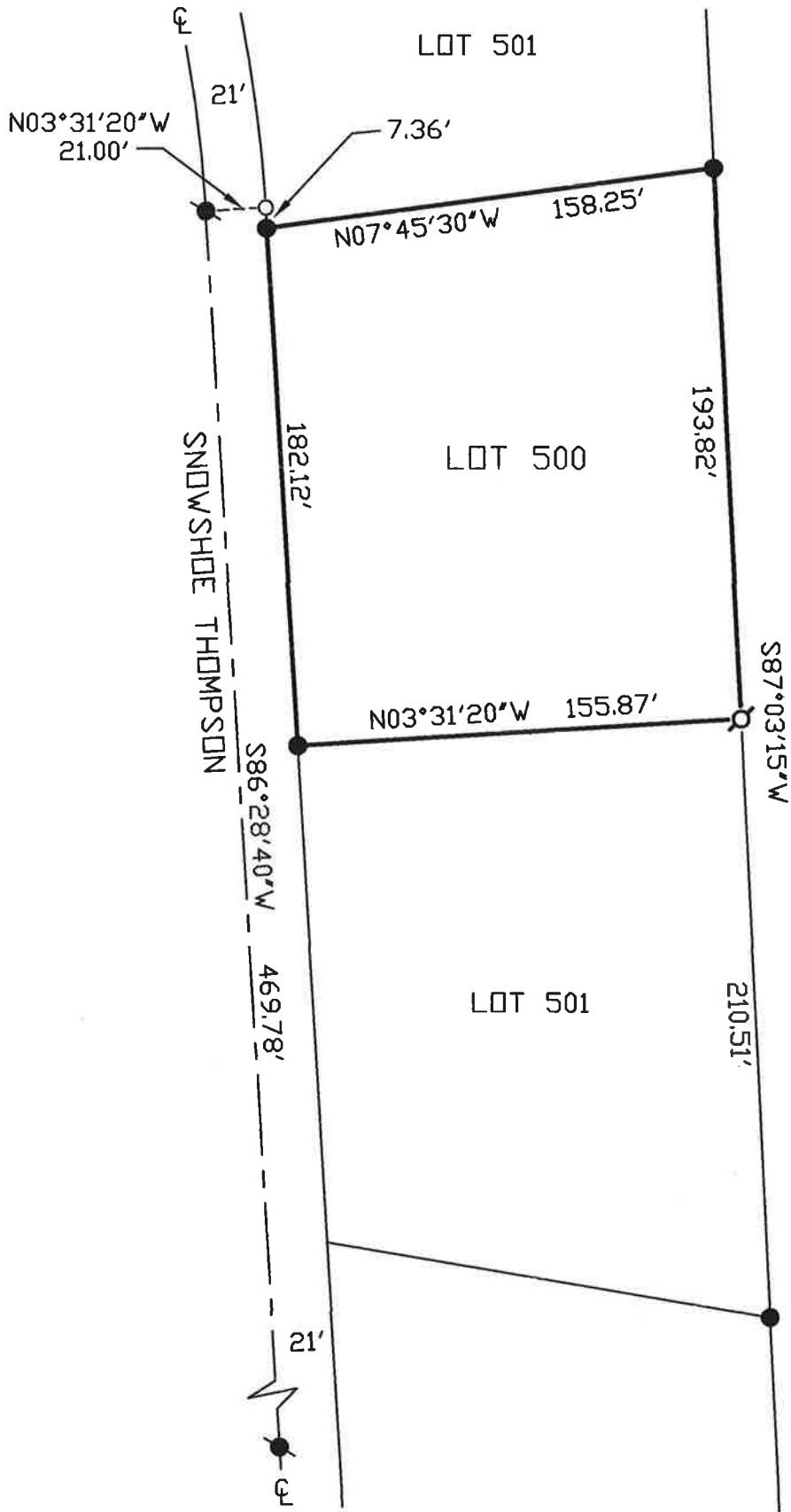
Title Deputy County Surveyor

County Surveyor's Comment _____



BOOK 24 OF CORNER RECORDS PAGE 10

NOTE: THE BEARINGS AND DISTANCES SHOWN ARE RECORD PER "W"/MAPS/23 P.C.R. NO MATERIAL DISCREPANCIES WITH RECORD INFORMATION WERE FOUND.



BK 24 OF CORNER RECORDS PAGE 10