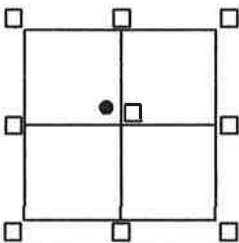


CORNER RECORD

Agency Index BK 24 PG 11
 Document Number 20210042

City of UNINCORPORATED AREA County of PLACER, California

Brief Legal Description LOT 38 PONDEROSA RANCHOS
BOOK "N" OF MAPS PAGE 72 P.C.D.R.



CORNER TYPE
 SEC.23 Government Corner Control
 T.17N. Meander Property
 R.16E. Rancho Other
 M.D.M. Date of Survey 2/17/21

COORDINATES (Optional)
 N _____ E _____
 Elevation _____
 Units Metric U.S. Survey Foot
 Horizontal Datum _____
 Zone _____ Epoch Date _____
 Vertical Datum _____
 Complies with Public Resources Code 8801-8801
 Complies with Public Resources Code 8890-8902

PLS Act Ref: 8765(d) 8771 8773 Other:

Corner/Monument: Left as found Established Rebuilt Pre-Construction
 Found and tagged Reestablished Referenced Post-Construction

Narrative of corner identified and monuments as found, set, reset, replaced, or moved:

See sheet #2 for description(s):

● = FOUND 5/8" REBAR W/ PLASTIC CAP R.C.E. 20257 PER "N"/MAPS/72 P.C.D.R.

● = FOUND 5/8" REBAR PER "N"/MAPS/72 P.C.D.R., TAG MISSING

⊙ = SET BATHEY MONUMENT (T-BAR) W/ NAIL & TAG STAMPED P.L.S. 8628

⊙ = SET NAIL & TAG STAMPED P.L.S. 8628, ON 3' DIAMETER ROCK FLUSH W/ GROUND

JN:20219

SURVEYOR'S STATEMENT

This Corner Record was prepared by me or under my direction in conformance with
 the Professional Land Surveyor's Act on APRIL 1, 2021

Signed [Signature] P.L.S. or R.C.E. No. 8628
Lic. Exp. 12/31/21



COUNTY SURVEYOR'S STATEMENT

This Corner Record was received AUGUST 3, 2021

and examined and filed AUGUST 13, 2021

Signed [Signature] P.L.S. or R.C.E. No. 8373

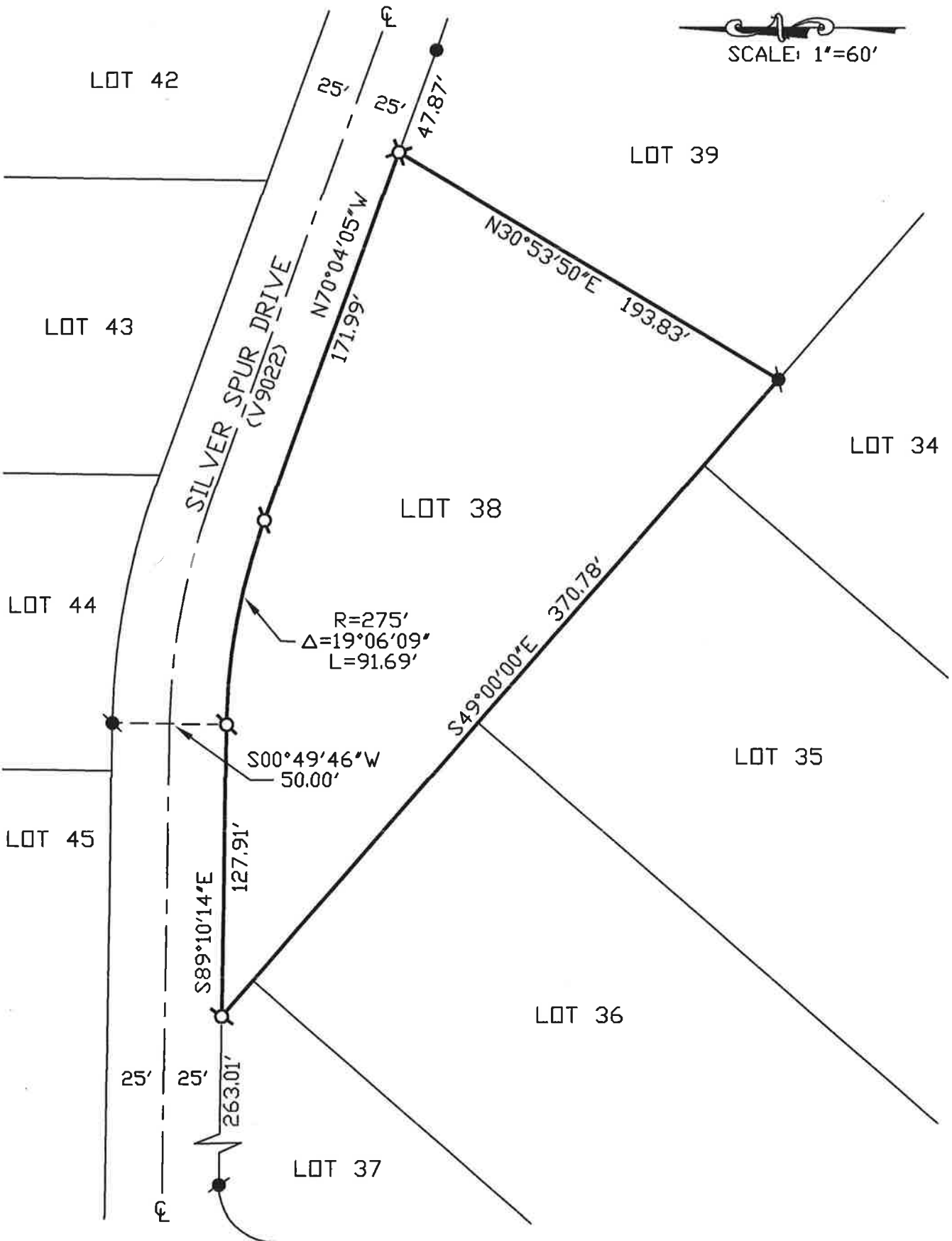
Title Deputy Co. Surveyor

County Surveyor's Comment _____



BOOK 24 OF CORNER RECORDS PAGE 11

NOTE: THE BEARINGS AND DISTANCES SHOWN ARE RECORD PER "N"/MAPS/72 P.CO..R. NO MATERIAL DISCREPANCIES WITH RECORD INFORMATION WERE FOUND.



BOOK 24 OF CORNER RECORDS PAGE 11