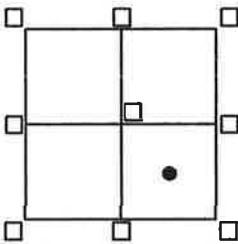


CORNER RECORD

Agency Index BL24 PG 12
 Document Number 20210041

City of UNINCORPORATED AREA County of PLACER, California

Brief Legal Description LOT 68 TWIN PEAKS ESTATES UNIT #2
BOOK 'I' OF MAPS PAGE 60 P.C.D.R.



CORNER TYPE
 SEC.14 Government Corner Control
 T.15N. Meander Property
 R.16E. Rancho Other
 M.D.M. Date of Survey 1/19/21

COORDINATES (Optional)
 N. _____ E. _____
 Elevation _____
 Units Metric U.S. Survey Foot
 Horizontal Datum _____
 Zone _____ Epoch Date _____
 Vertical Datum _____
 Complies with Public Resources Code 8801-8891
 Complies with Public Resources Code 8890-8902

PLS Act Ref: 8765(d) 8771 8773 Other:

Corner/Monument: Left as found Established Rebuilt Pre-Construction
 Found and tagged Reestablished Referenced Post-Construction

Narrative of corner identified and monuments as found, set, reset, replaced, or moved:
 See sheet #2 for description(s):
 ● = FOUND 3/4" IRON PIPE NO TAG PER "I"/MAPS/60 P.C.D.R.
 ● = FOUND 1/2" REBAR PER "I"/MAPS/60 P.C.D.R., TAG MISSING
 ○ = SET BATHEY MONUMENT (T-BAR) W/ NAIL & TAG STAMPED P.L.S. 8628
 ⊗ = SET GIN SPIKE W/ WASHER STAMPED P.L.S. 8628, IN ASPHALT DRIVEWAY
 JN:20200

SURVEYOR'S STATEMENT

This Corner Record was prepared by me or under my direction in conformance with the Professional Land Surveyor's Act on APRIL 1, 2021

Signed [Signature] PLS. or RCE No. 8628
LIC. EXP. 12/31/21



COUNTY SURVEYOR'S STATEMENT

This Corner Record was received AUGUST 3, 2021 and examined and filed AUGUST 13, 2021

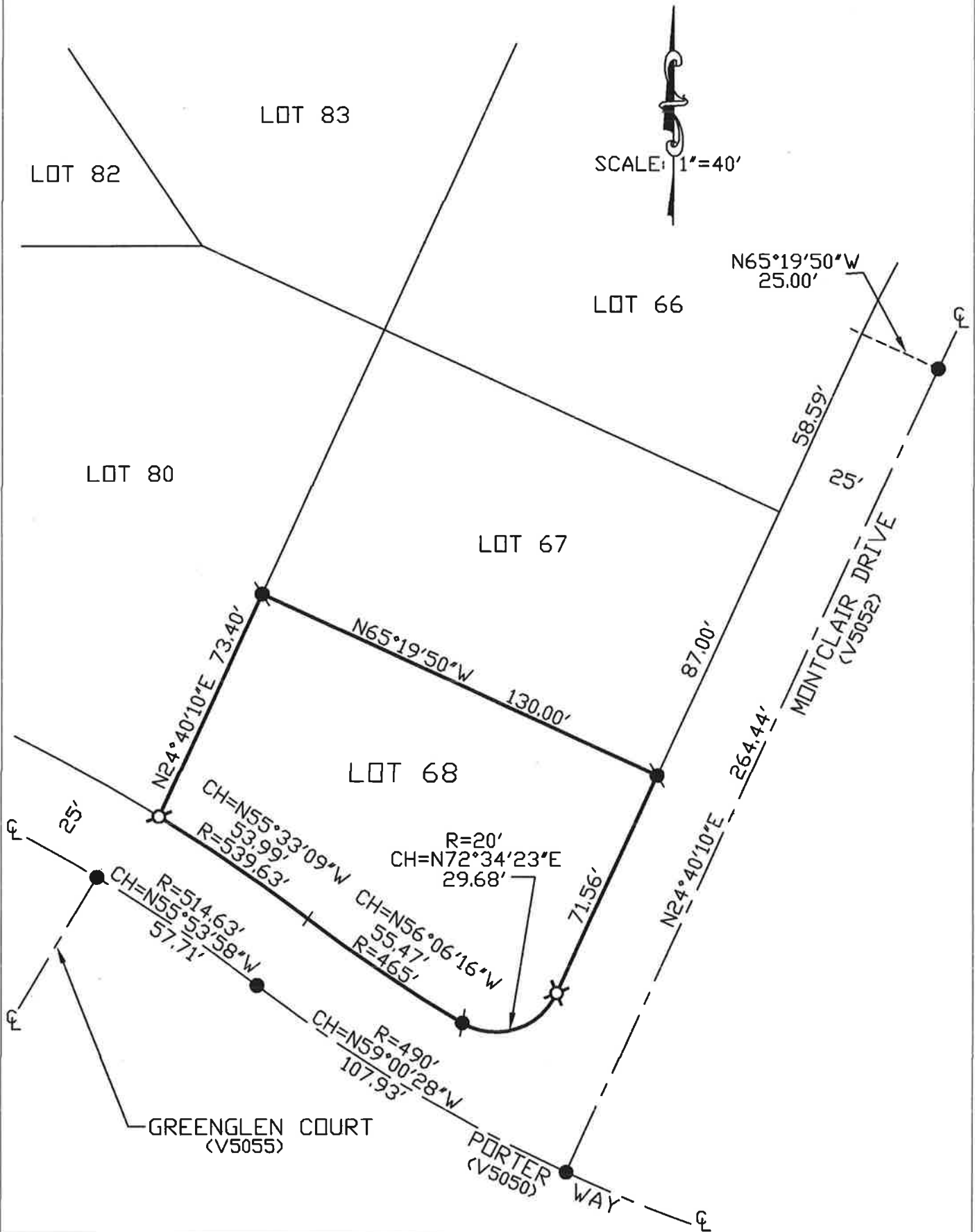
Signed [Signature] PLS. or RCE No. 8373
 Title Deputy Co. Surveyor



County Surveyor's Comment _____

BOOK 24 OF CORNER RECORDS PAGE 12

NOTE: THE BEARINGS AND DISTANCES SHOWN ARE RECORD PER "I"/MAPS/60 P.C.D.R. NO MATERIAL DISCREPANCIES WITH RECORD INFORMATION WERE FOUND.



BOOK 24 OF CORNER RECORDS PAGE 12