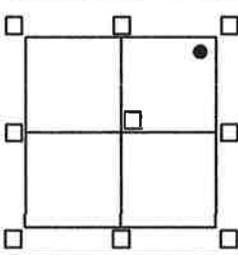


CORNER RECORD

Agency Index BK 24 PE 13
 Document Number 20210040

City of UNINCORPORATED AREA County of PLACER, California

Brief Legal Description LOT 133 SERENE LAKES UNIT #1
BOOK 'I' OF MAPS PAGE 17 P.C.D.R.



CORNER TYPE

SEC.34 Government Corner Control
 T.17N. Meander Property
 R.14E. Rancho Other
 M.D.M. Date of Survey 1/15/21

COORDINATES (Optional)

N. _____ E. _____
 Elevation _____
 Units Metric U.S. Survey Foot
 Horizontal Datum _____
 Zone _____ Epoch Date _____
 Vertical Datum _____
 Complies with Public Resources Code 8801-8891
 Complies with Public Resources Code 8890-8902

PLS Act Ref: 8765(d) 8771 8773 Other:

Corner/Monument: Left as found Established Rebuilt Pre-Construction
 Found and tagged Reestablished Referenced Post-Construction

Narrative of corner identified and monuments as found, set, reset, replaced, or moved:

- See sheet #2 for description(s):
- = FOUND 3/4" REBAR W/ WIRED TAG L.S. 3229 PER 4/SUR/1 P.C.D.R.
- = FOUND 1/2" REBAR PER 4/SUR/1 P.C.D.R., W/ WIRE TAG MISSING
- = FOUND 1/2" REBAR PER 4/SUR/1 P.C.D.R., TAG MISSING
- = SET BATHEY MONUMENT (T-BAR) W/ NAIL & TAG STAMPED P.L.S. 8628 JN:20196

SURVEYOR'S STATEMENT

This Corner Record was prepared by me or under my direction in conformance with the Professional Land Surveyor's Act on APRIL 1, 2021

Signed [Signature] PLS. or R.C.E. No. 8628
LIC. EXP. 12/31/21



COUNTY SURVEYOR'S STATEMENT

This Corner Record was received AUGUST 3, 2021 and examined and filed AUGUST 13, 2021

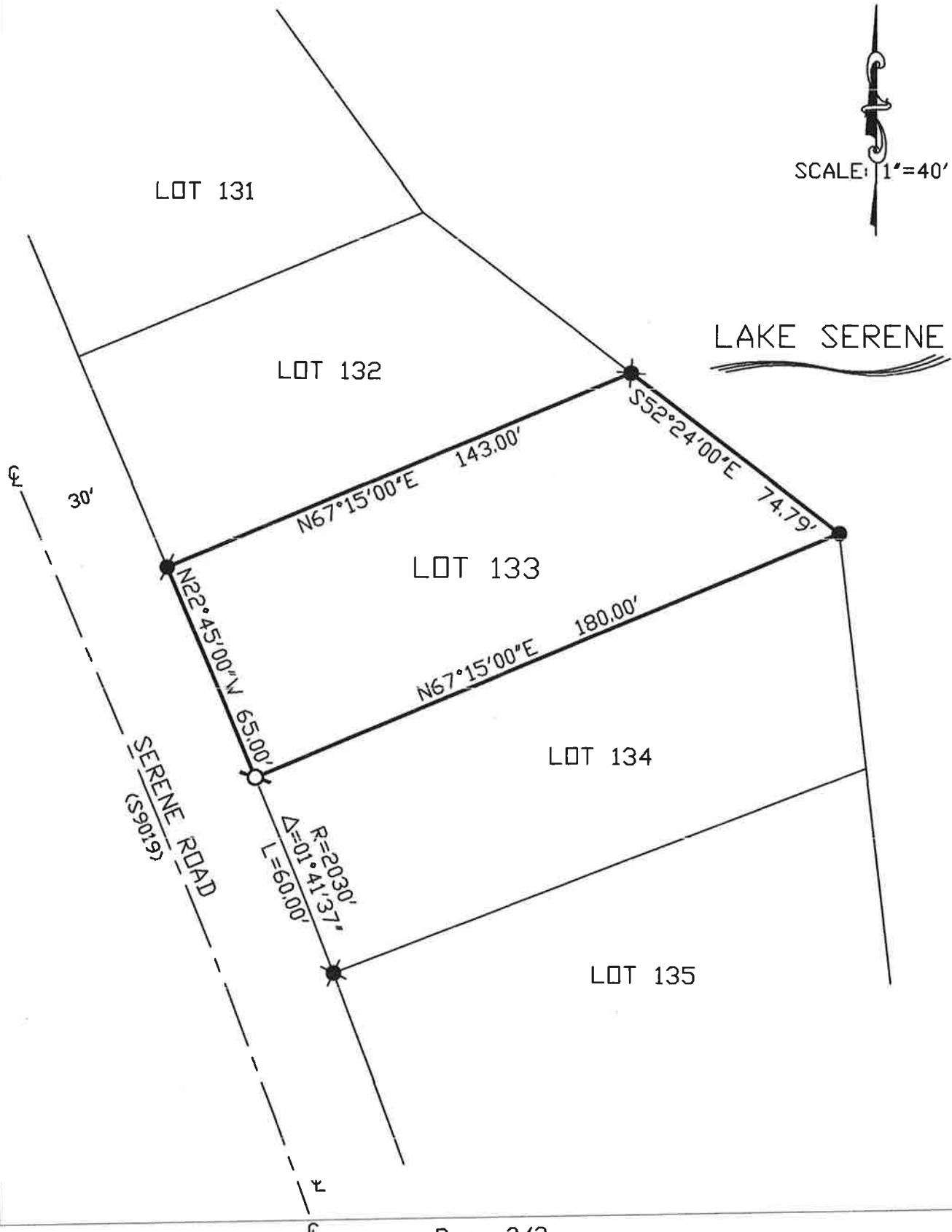
Signed [Signature] PLS. or R.C.E. No. 8373
 Title Deputy Co. Surveyor



County Surveyor's Comment _____

BOOK 24 OF CORNER RECORDS PAGE 13

NOTE: THE BEARINGS AND DISTANCES SHOWN ARE RECORD PER "I"/MAPS/17 P.C.D.R. NO MATERIAL DISCREPANCIES WITH RECORD INFORMATION WERE FOUND.



BOOK 24 OF CORNER RECORDS PAGE 13