



Chapter 1 Introduction

1.1 Purpose

Placer County, 5 incorporated communities, and 20 special districts prepared this Local Hazard Mitigation Plan (LHMP) Update to the Federal Emergency Management Agency (FEMA) approved 2016 Placer County LHMP. The purpose of this LHMP Update is to guide hazard mitigation planning to better protect the people and property of Placer County from the effects of natural hazards. This LHMP Update demonstrates the Placer County communities' commitment to reducing risks from hazards and serves as a tool to help decision makers direct mitigation activities and resources. This LHMP Update was also developed, among other things, to ensure Placer County and participating jurisdictions' continued eligibility for certain federal disaster assistance: specifically, the FEMA Hazard Mitigation Grant Program (HMGP), Building Resilient Infrastructure and Communities (BRIC), and the Flood Mitigation Assistance Program (FMA).

1.2 Background and Scope

Each year in the United States, natural disasters take the lives of hundreds of people and injure thousands more. Nationwide, taxpayers pay billions of dollars annually to help communities, organizations, businesses, and individuals recover from disasters. These monies only partially reflect the true cost of disasters because additional expenses incurred by insurance companies and nongovernmental organizations are not reimbursed by tax dollars. Many natural disasters are predictable, and much of the damage caused by these events can be reduced or even eliminated.

Hazard mitigation is defined by FEMA as "any sustained action taken to reduce or eliminate long-term risk to human life and property from a hazard event." The results of a three-year, congressionally mandated independent study to assess future savings from mitigation activities provides evidence that mitigation activities are highly cost-effective. On average, each dollar spent on mitigation saves society an average of \$6 in avoided future losses in addition to saving lives and preventing injuries (National Institute of Building Science Multi-Hazard Mitigation Council 2019 Report).

Hazard mitigation planning is the process through which hazards are identified, likely impacts determined, mitigation goals set, and appropriate mitigation strategies determined, prioritized, and implemented. This plan documents Placer County's hazard mitigation planning process and identifies relevant hazards and vulnerabilities and strategies the County and participating jurisdictions will use to decrease vulnerability and increase resiliency and sustainability throughout the community.

This Placer County 2021 LHMP Update is a multi-jurisdictional plan that geographically covers the entire area within Placer County's jurisdictional boundaries (hereinafter referred to as the Planning Area). The following jurisdictions participated in the planning process and are seeking FEMA approval of the LHMP Update:

- Placer County*
 - City of Auburn*
 - City of Colfax*
 - Town of Loomis*
 - City of Lincoln*
 - City of Rocklin*
 - Alta Fire Protection District
 - Alpine Springs County Water District*
 - Foresthill Fire Protection District*
 - Foresthill Public Utility District
 - Nevada Irrigation District*
 - Newcastle Fire Protection District
 - Northstar Community Service District/Fire Department
 - North Tahoe Fire Protection District*
 - North Tahoe Public Utility District
 - Olympic Valley Fire and Public Utility District (was Squaw Valley Fire and Public Utility District)*
 - Placer County Flood Control & Water Conservation District*
 - Placer County Resource Conservation District
 - Placer County Water Agency*
 - Placer Hills Fire Protection District*
 - San Juan Water District
 - Sierra Joint Community College District
 - South Placer Fire Protection District(absorbed Loomis FPD, also a participant in the 2016 LHMP)*
 - Tahoe City Public Utilities District*
 - Truckee Fire Protection District*
 - Placer County Air Pollution District
- * Participated in 2016 Placer County LHMP

All plan participants from the 2016 Placer County Plan are participating in this LHMP Update, with the exception of Tahoe-Truckee Unified School District.

This LHMP Update was prepared pursuant to the requirements of the Disaster Mitigation Act of 2000 (Public Law 106-390) and the implementing regulations set forth by the Interim Final Rule published in the Federal Register on February 26, 2002, (44 CFR §201.6) and finalized on October 31, 2007. (Hereafter, these requirements and regulations will be referred to collectively as the Disaster Mitigation Act (DMA) or DMA 2000.) While the act emphasized the need for mitigation plans and more coordinated mitigation planning and implementation efforts, the regulations established the requirements that local hazard mitigation plans must meet in order for a local jurisdiction to be eligible for certain federal disaster assistance and hazard mitigation funding under the Robert T. Stafford Disaster Relief and Emergency Act (Public Law 93-288). This planning effort also follows FEMA’s 2013 Plan Preparation Guidance. Because the Placer County Planning Area is subject to many kinds of hazards, access to FEMA grant programs is vital.

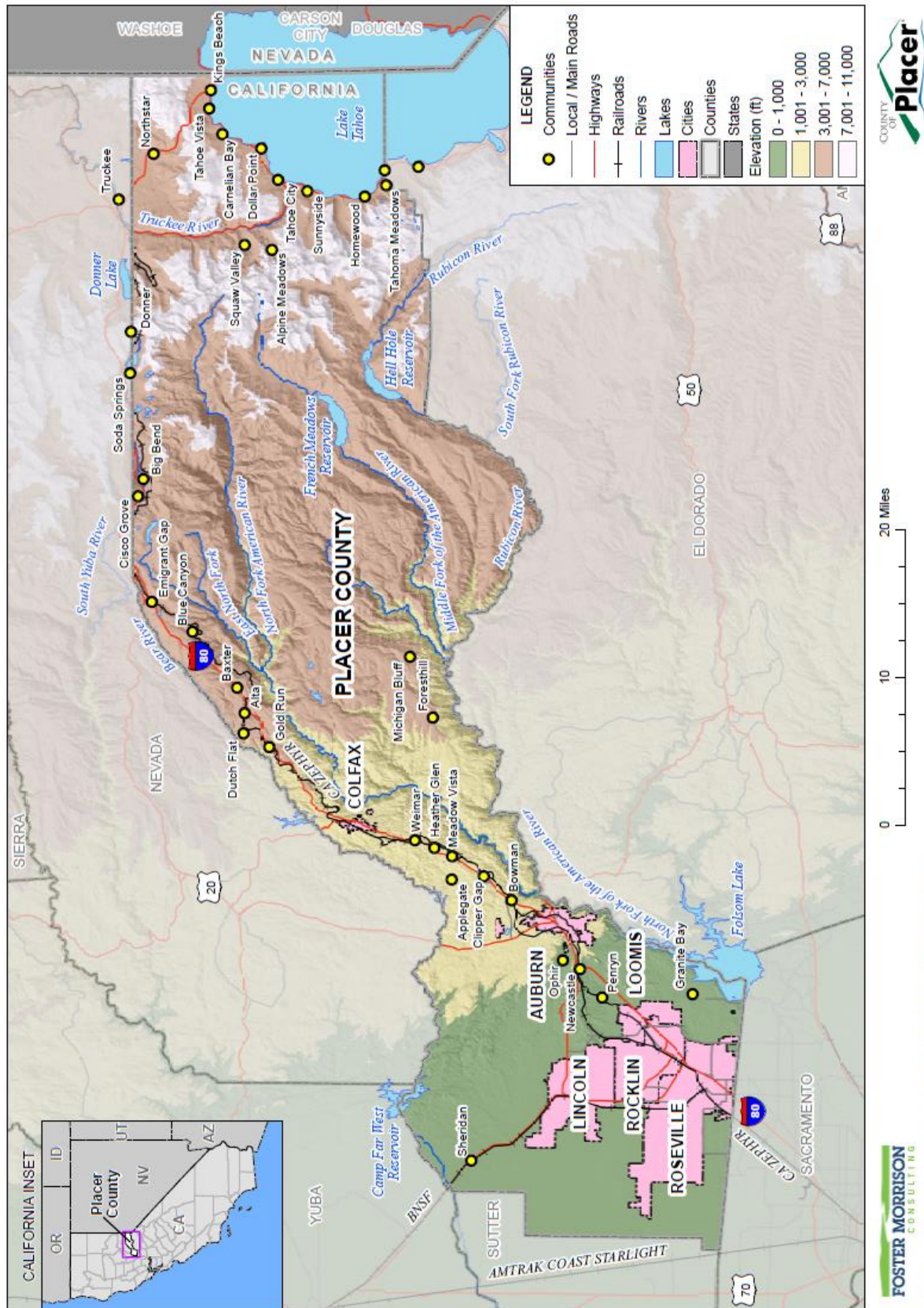
Information in this LHMP Update will be used to help guide and coordinate mitigation activities and decisions for local land use policy in the future. Proactive mitigation planning will help reduce the cost of disaster response and recovery to communities and their residents by protecting critical community facilities, reducing liability exposure, and minimizing overall community impacts and disruptions. The

Placer County Planning Area has been affected by hazards in the past and is thus committed to reducing future impacts from hazard events and maintaining eligibility for mitigation-related federal funding.

1.3 Community Profile

Placer County is located in northern California and stretches from Sacramento County to Lake Tahoe and the Nevada border. The Counties of Sacramento, El Dorado, Sutter, Yuba, and Nevada border Placer County. Regional access to the County is provided via Interstate 80 (I-80), which runs east-west through the entire County. Placer County includes the incorporated communities of Auburn, Colfax, Lincoln, Loomis, Rocklin, and Roseville. A map of the County is shown in Figure 1-1.

Figure 1-1 Placer County



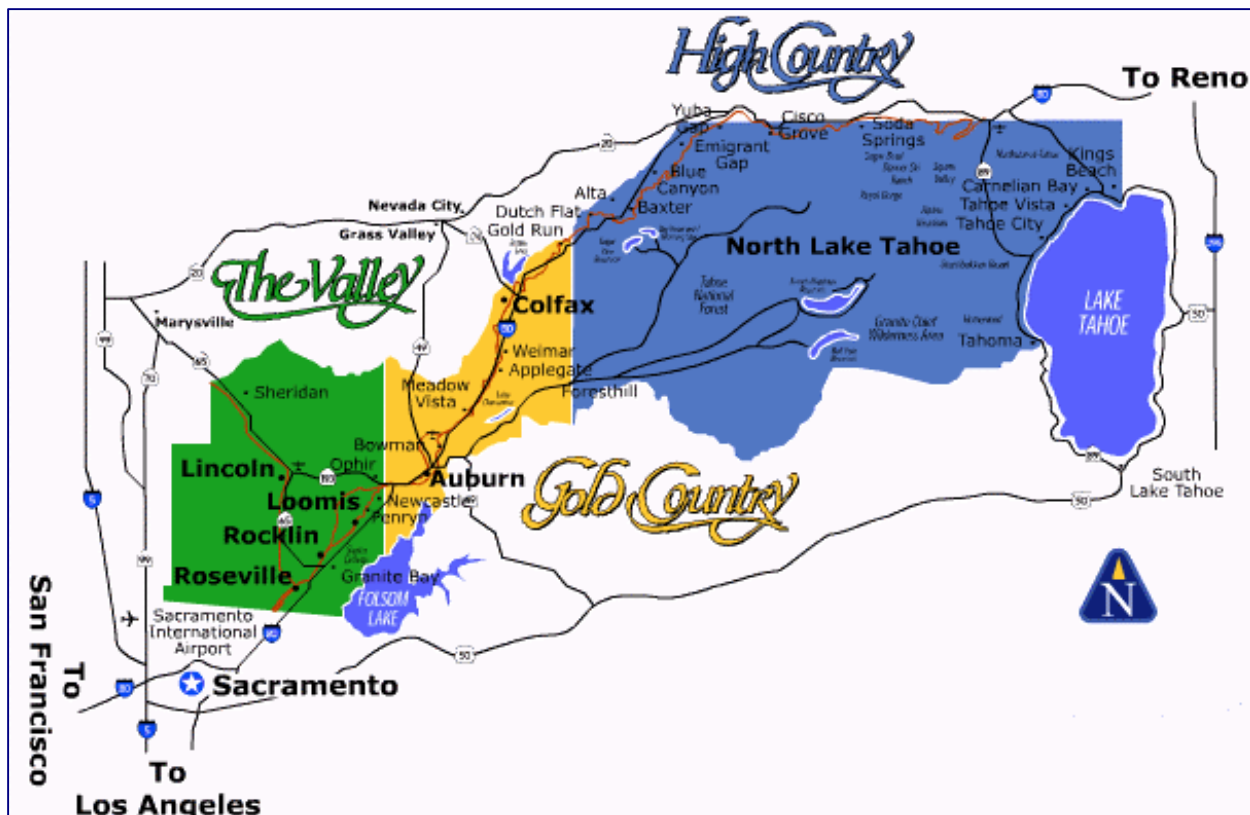
1.3.1. History

Placer County was home to the Nisenan Native Americans for hundreds of years before the discovery of gold in 1848 when multitudes of miners migrated to the area. Auburn was settled in 1848 upon the discovery of gold and later became a shipping and supply center for the surrounding gold camps. Three years after the discovery of gold in the region, the fast-growing county was formed from portions of Sutter and Yuba Counties on April 25, 1851, with Auburn as the County seat. The name Placer comes from the Spanish word meaning “sand and gravel deposits containing gold.” Gold mining remained a major industry through the 1880s, eventually overtaken by the industries of farming, timber, and the Southern Pacific Railroad. The commercial fruit industry also expanded rapidly in western Placer County in the late 1870s and early 1880s, with the Central Pacific Railroad providing a wide market in the east for California’s agricultural products. Among the produce raised were citrus, apples, peaches, pears, plums, cherries, olives, almonds, and walnuts.

1.3.2. Geography and Climate

Placer County, spanning the eastern part of the Central Valley of California, increases in elevation from urban South Placer, through Western Placer, to the High Sierras of North Lake Tahoe, and the Nevada state line. Located on an area of over 1,500 square miles, 98 square miles of which are comprised of water, the County is generally divided into three geographically distinct areas: the Valley – Roseville to Penryn; the Gold Country - Newcastle to Dutch Flat; and the High Country - Alta to Tahoe. Figure 1-2 illustrates these areas.

Figure 1-2 Placer County Geographic Areas



Source: Placer County 2021

The County’s topography is characterized by broad, relatively flat valley floors (the Valley) in the southwest; valley floors giving way to the foothills areas (Gold Country) heading east; and foothills and high mountains (Sierra Nevada) in the east. Elevations range from 160 to 400 feet above mean sea level in the valley near Roseville to approximately 2,000 feet near Colfax in Gold Country, to more than 9,000 feet in the Sierra Nevada. Water resources within Placer County include approximately 700 miles of rivers and streams and 97,000 acres of lakes.

The climate varies throughout the County, primarily based on elevation. Summers are longer, relatively hot, and dry in the lower elevations and are relatively cooler in the higher elevations of the Sierra Nevada. There is little precipitation in the County during the summer. Winters in the lower elevations are shorter and precipitation is primarily in the form of rain. In the higher elevations of the Sierra Nevada, winters vary from short and mild with moderate snowfall to moderately severe with frequent snowfall. Most of the seasonal precipitation throughout the County occurs between October and April. More specific information about Placer County’s climate can be found in Chapter 4 Risk Assessment.

1.3.3. Population and Demographics

The California Department of Finance population estimates for the County and incorporated jurisdictions are shown on Table 1-1.

Table 1-1 Placer County Population Estimates – July 1, 2020

Jurisdiction	2020
Auburn	14,594
Colfax	2,152
Lincoln	49,317
Loomis	6,888
Rocklin	70,350
Roseville	145,163
Balance of County	115,247

Source: California Department of Finance, 2020 E-1 Report

Select social and economic information for the County and participating jurisdictions are shown in Table 1-2.

Table 1-2 Placer County – Select Social and Economic Statistics

Statistic	Number
Populations	
Population under 5	5.3%
Population over 65	19.8%
Median Age	42.4
Racial Makeup	
White	82.8%
Black or African American	2.0%
American Indian or Alaska Native	0.6%
Asian	8.2%
Native Hawaiian or Pacific Islander	0.2%
Some Other Race	1.4%
Two or more races	5.0%
Income	
Median income	\$97,723
Mean Income	\$124,843
Poverty rate	
All families	6.2%
All people	7.7%

Source: 2010 US Census, 2019 US Census Bureau American Community Survey, California Employment Development Department

1.3.4. Economy and Tax Base

Placer County has a diverse economy. US Census estimate show economic characteristics for the County. These are shown in Table 1-3.

Table 1-3 Placer County Civilian Employed Population 16 years and Over

Industry	Estimated Employment	Percent
Agriculture, forestry, fishing and hunting, and mining	491	0.3%
Construction	12,108	6.4%
Manufacturing	10,835	5.7%
Wholesale trade	4,096	2.1%
Retail trade	23,175	12.2%
Transportation and warehousing, and utilities	9,583	5.0%
Information	3,642	1.9%
Finance and insurance, and real estate and rental and leasing	16,023	8.4%
Professional, scientific, and management, and administrative and waste management services	25,759	13.5%
Educational services, and health care and social assistance	42,730	22.4%
Arts, entertainment, and recreation, and accommodation and food services	18,396	9.7%
Other services, except public administration	9,572	5.0%
Public administration	14,211	7.5%

Source: US Census Bureau American Community Survey 2018 Estimates

Major employers in the County are shown in Table 1-4.

Table 1-4 Major Employers in Placer County

Employer Name	Location	Industry
Alpine Meadows Ski Resort	Alpine Meadows	Resorts
Backyard Bar & BBQ	Truckee	Restaurants
Composite Engineering Inc	Roseville	Engineers-Professional
Costco Wholesale	Roseville	Wholesale Clubs
Golfland Sunsplash Roseville	Roseville	Water Parks
Hewlett-Packard	Roseville	Computers-Electronic-Manufacturers
Kaiser Permanente Roseville MD	Roseville	Hospitals
Northstar California	Truckee	Resorts
Oracle	Rocklin	Computer Software-Manufacturers
Placer County Food Stamps	Auburn	County Government-Social/Human Resources
Placer County Sheriff	Auburn	Government Offices-County
Placer County Sheriff Dept	Tahoe City	Government Offices-County
PRIDE Industries	Roseville	Employment Agencies & Opportunities
Q I P-Roseville	Roseville	Real Estate Management
Resort At Squaw Creek A	Alpine Meadows	Hotels & Motels
Ritz-Carlton Club Lake Tahoe	Truckee	Hotels & Motels

Employer Name	Location	Industry
Roseville Toyota & Scion	Roseville	Automobile Dealers-Used Cars
Sheriff's Training	Auburn	Government Offices-County
Sierra Joint Community College	Rocklin	School Districts
Stagg Howard A Pro Corp	Roseville	Attorneys
Sutter Auburn Faith Hospital	Auburn	Hospitals
Sutter Roseville Medical Center Foundation	Roseville	Hospitals
TASQ Technology	Roseville	Importers (wholesale)
Thunder Valley Casino	Lincoln	Casinos
Union Pacific Railroad Co	Roseville	Railroads

Source: California Economic Development Department, retrieved 4/14/2021

The County has a wide and varied tax base. Tax base information is tracked and maintained by the Placer County Assessor's Office. Table 1-5 shows the tax base for the County as well as for the incorporated jurisdictions.

*Table 1-5 Unincorporated Placer County – Distribution of Value by Property Use**

Property Use	2020 Value (\$)	Percent of Current Roll
Agricultural	\$471,564,018	0.6%
Commercial	\$8,164,549,392	9.7%
Industrial	\$2,228,164,376	2.6%
Institutional	\$1,685,871,001	2.0%
Miscellaneous	\$938,799,592	1.1%
Natural / Open Space	\$532,279,280	0.6%
Residential	\$70,273,188,400	83.4%
Total	\$84,294,416,059	100.0%

Source: Placer County 2020 Assessor's Office data

*includes land and structure values

1.4 Plan Organization

This Placer County LHMP Update is a multi-jurisdictional plan that geographically covers the entire area within Placer County's jurisdictional boundaries (i.e., the Planning Area). The Placer County Local Hazard Mitigation Plan update is organized as follows:

Base Plan

- Chapter 1: Introduction
- Chapter 2: What's New
- Chapter 3: Planning Process
- Chapter 4: Risk Assessment
- Chapter 5: Mitigation Strategy

- Chapter 6: Plan Adoption
- Chapter 7: Plan Implementation and Maintenance

Annexes

- Annex A: City of Auburn
- Annex B: City of Colfax
- Annex C: Town of Loomis
- Annex D: City of Lincoln
- Annex E: City of Rocklin
- Annex F: Alta Fire Protection District
- Annex G: Alpine Springs County Water District
- Annex H: Foresthill Fire Protection District
- Annex I: Foresthill Public Utility District
- Annex J: Nevada Irrigation District
- Annex K: Newcastle Fire Protection District
- Annex L: Northstar Community Service District/Fire Department
- Annex M: North Tahoe Fire Protection District
- Annex N: North Tahoe Public Utility District
- Annex O: Olympic Valley Fire and Public Utility District (was Squaw Valley Public Utility District)
- Annex P: Placer County Flood Control & Water Conservation District
- Annex Q: Placer County Resource Conservation District
- Annex R: Placer County Water Agency
- Annex S: Placer Hills Fire Protection District
- Annex T: San Juan Water District
- Annex U: Sierra Joint Community College District
- Annex V: South Placer Fire Protection District
- Annex W: Tahoe City Public Utilities District
- Annex X: Truckee Fire Protection District
- Annex Y: Placer County Air Pollution Control District

Appendices

- Appendix A: Planning Process
- Appendix B: References
- Appendix C: Mitigation Strategy
- Appendix D: Adoption Resolution
- Appendix E: Threatened and Endangered Species
- Appendix F: Critical Facilities

The **Base Plan** provides the overall framework for this multi-jurisdictional LHMP. It is the umbrella document that includes the planning process, methodologies, and procedural requirements for all participating jurisdictions (i.e., unincorporated County and all Jurisdictional Annexes). As such, Chapters 1-7 of the Base Plan apply to the unincorporated County, the five incorporated communities, and the six special Districts as participants to this LHMP Update seeking FEMA approval of the Plan. Because this is a multi-jurisdictional plan, the Base Plan addresses the LHMP hazard mitigation planning elements specific to the Placer County Planning Area which includes data, information and analysis specific to all participating jurisdictions and also includes data, information, and analysis specific to unincorporated Placer County.

The **Jurisdictional Annexes** detail the hazard mitigation planning elements specific to each additional participating jurisdiction to this Placer County LHMP Update. Each annex is not intended to be a standalone document, but appends to, supplements, and incorporates by reference the information contained in the Base Plan document. As such, all Chapters 1-7 of the Base Plan, including the planning process and other procedural requirements and planning elements apply to and were met by each participating jurisdiction. The annexes provide additional information specific to each participating jurisdiction, with a focus on providing additional details on the risk assessment and mitigation strategy.

The **Appendices** provide additional information, data, and planning process documentation that applies to all participating jurisdictions (i.e., unincorporated County and all jurisdictional annexes) to this Placer County LHMP Update.