

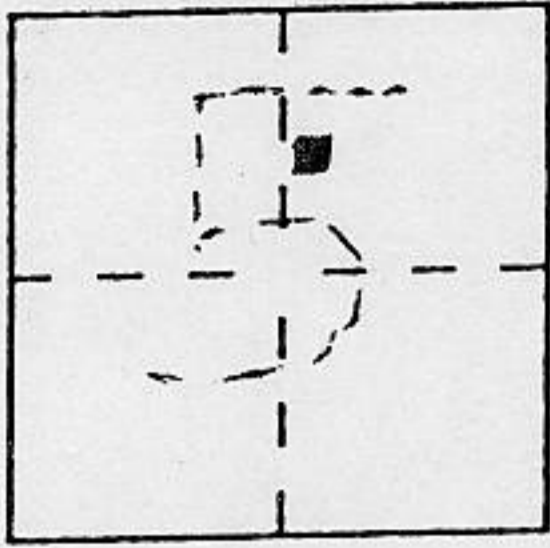
CORNER RECORD

Document Number _____

City of _____

County of PLACER, California

Brief Legal Description LOT 6 & 1/2 LOT 7 LAKEVIEW SUBDIVISION
O.R. BOOK F, MAPS PL 19, SEC. 5 T15N-1217E MDBEM,



CORNER TYPE

Government Corner Control
Meander Property
Rancho Other
Date of Survey JUNE 22 1994

COORDINATES (Optional)

N. _____
E. _____
Zone _____ Datum _____
Elev. _____

Corner — Left as found Found and tagged Established Reestablished Rebuilt

Identification and type of corner found: Evidence used to identify or procedure used to establish or reestablish the corner:

SEE SKETCH BACK

A description of the physical condition of the monument as found and as set or reset:

SEE SKETCH BACK

SURVEYOR'S STATEMENT

This Corner Record was prepared by me or under my direction in conformance with the Land Surveyors' Act on JUNE, 23 1994.

Signed Jerry W. Tisean L.S. or R.C.E. Number 3422



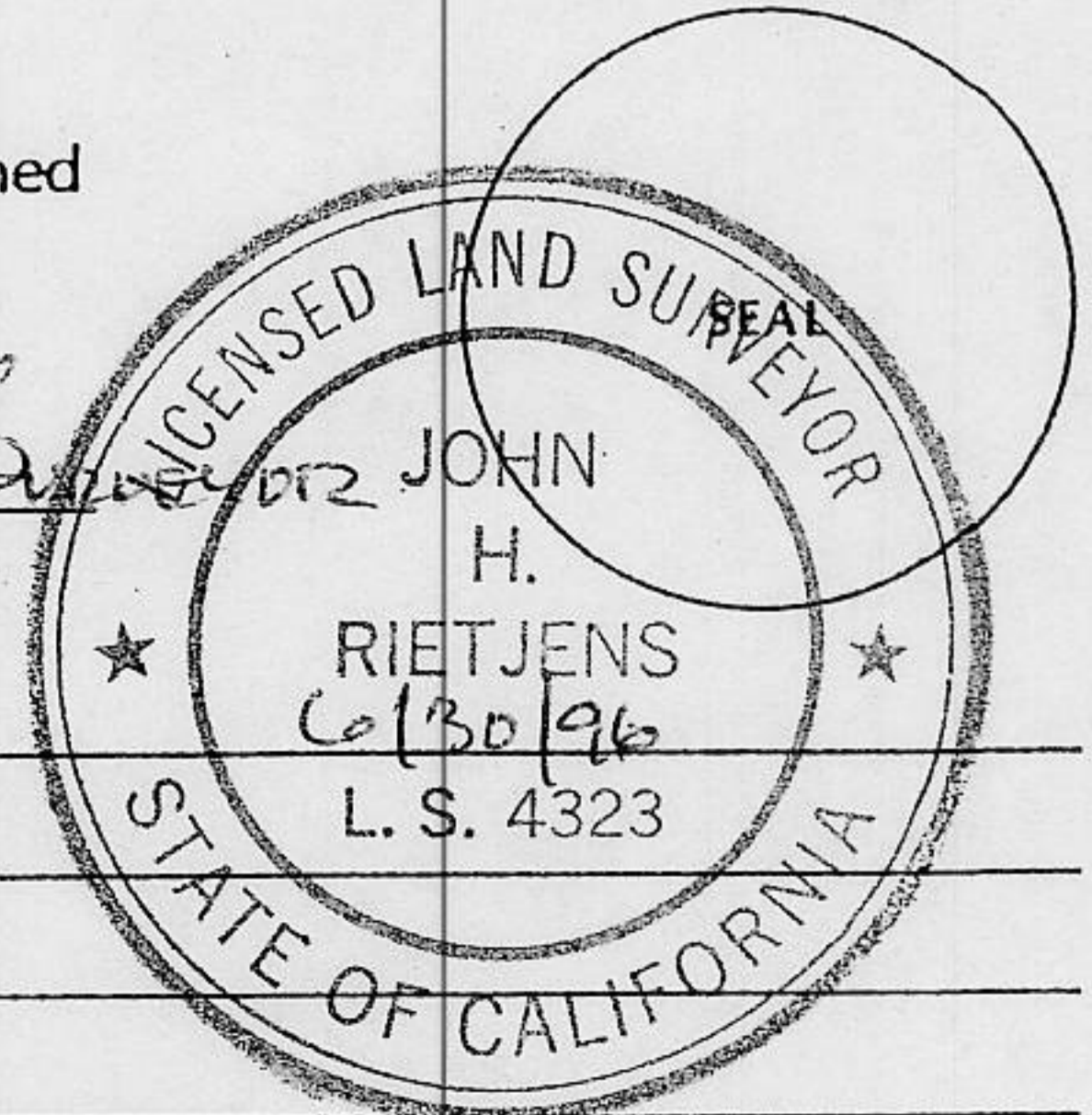
COUNTY SURVEYOR'S STATEMENT

This Corner Record was received OCT 13 1994 and examined

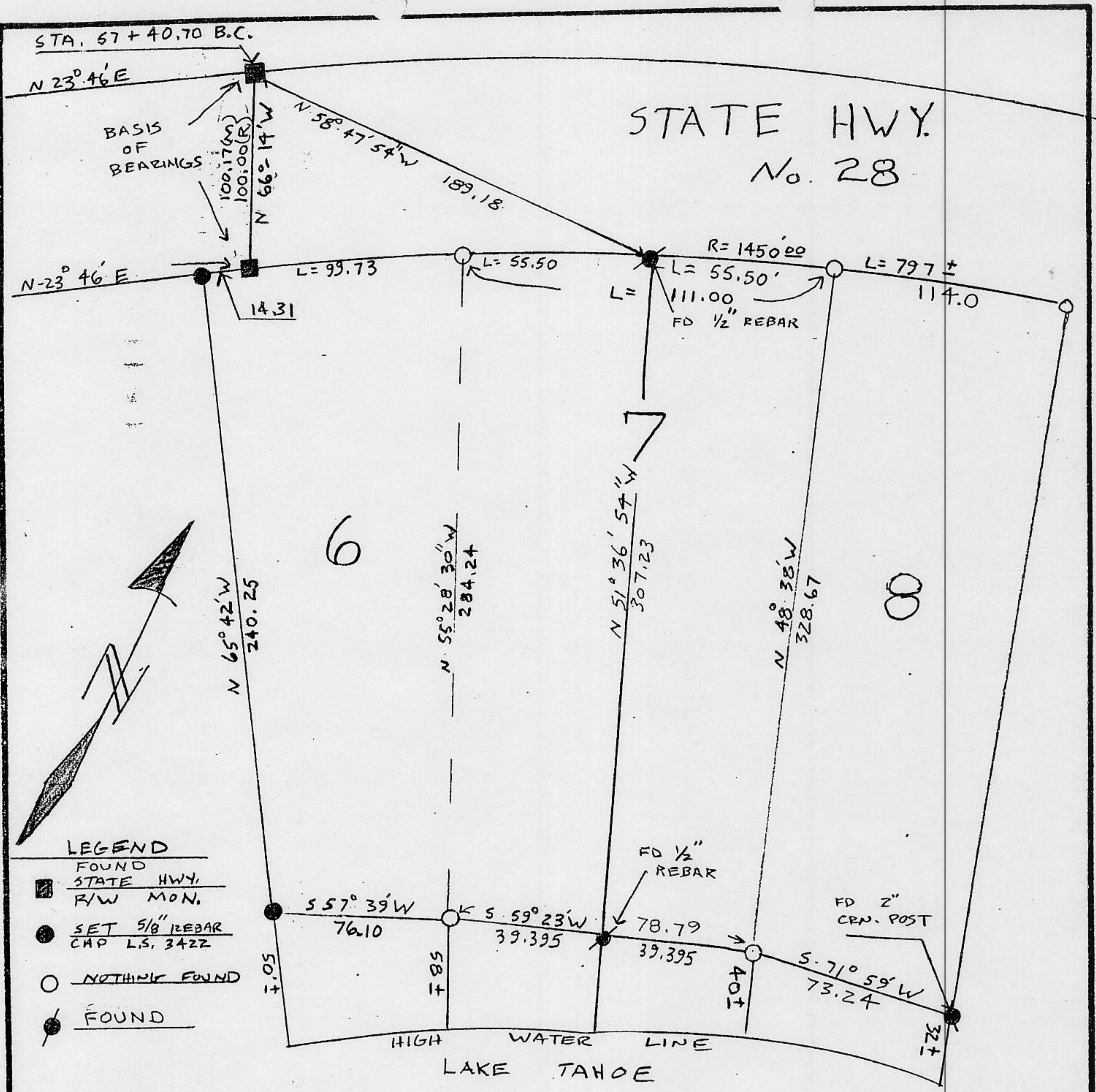
and filed OCTOBER 14 1994.

Signed John H. Rietsjens Title Deputy County Surveyor

County Surveyor's Comment _____



BOOK 4 CORNER RECORDS PAGE 71



- LEGEND**
- FOUND
 - STATE HWY. R/W MON.
 - SET 5/8" REBAR CAP L.S. 3422
 - NOTHING FOUND
 - FOUND

PLAT OF SURVEY

LOT 6 & 1/2 LOT 7 LAKEVIEW SUBDIVISION, O.R. BOOK F, PAGE 19, SECTION 5, T15N, R17E M.D.B. & M. COUNTY OF PLACER CALIFORNIA

N.T.S

JUNE 1994

J/N 647.10