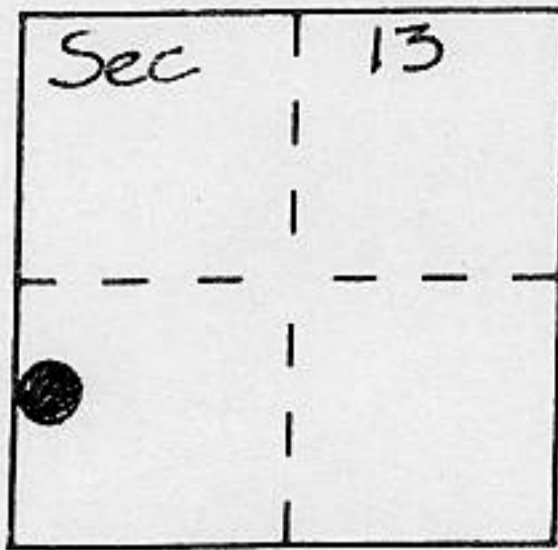


# CORNER RECORD

Document Number \_\_\_\_\_

City of \_\_\_\_\_ County of Placer, California

Brief Legal Description Lot 131 Talmont Est. Unit #2  
Book I of Maps Pg. 1



T.15N

R.16E

M.D.M.

### CORNER TYPE

- Government Corner
- Control
- Meander
- Property
- Rancho
- Other
- Date of Survey 8/10/94

### COORDINATES (Optional)

N. \_\_\_\_\_  
 E. \_\_\_\_\_  
 Zone \_\_\_\_\_ Datum \_\_\_\_\_  
 Elev. \_\_\_\_\_

Corner — Left as found  Found and tagged  Established  Reestablished  Rebuilt

Identification and type of corner found: Evidence used to identify or procedure used to establish or reestablish the corner:

● = Found 1/2" Rebar per I/Maps/1

A description of the physical condition of the monument as found and as set or reset:

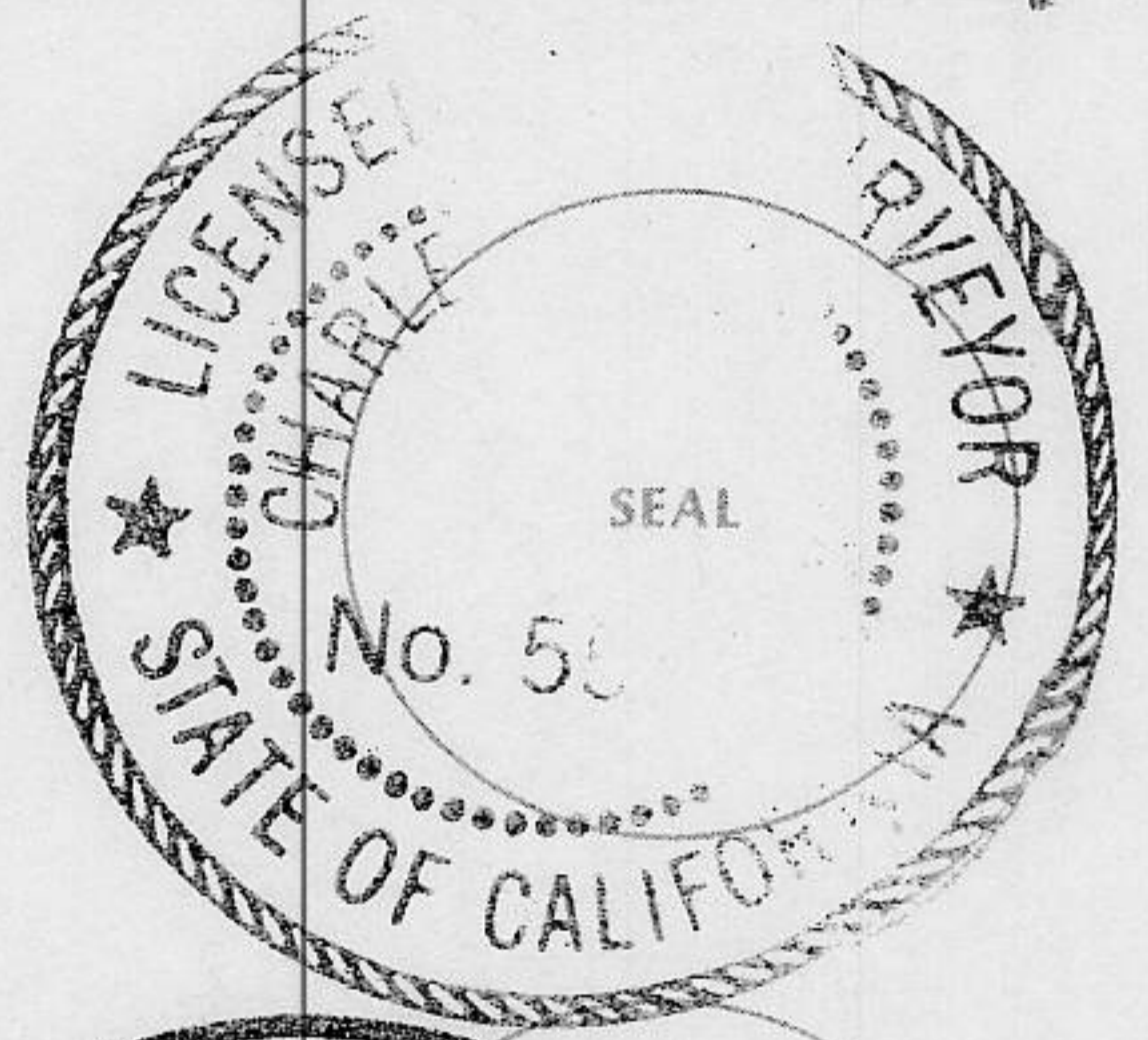
○ = Set 3/4" Iron Pipe w/plastic plug stamped L.S. 5549

JN: 94118

### SURVEYOR'S STATEMENT

This Corner Record was prepared by me or under my direction in conformance with the Land Surveyors' Act on AVG. 8 19 94.

Signed Charles R. Sage Jr. L.S. or R.C.E. Number 5549 L.S. 5549

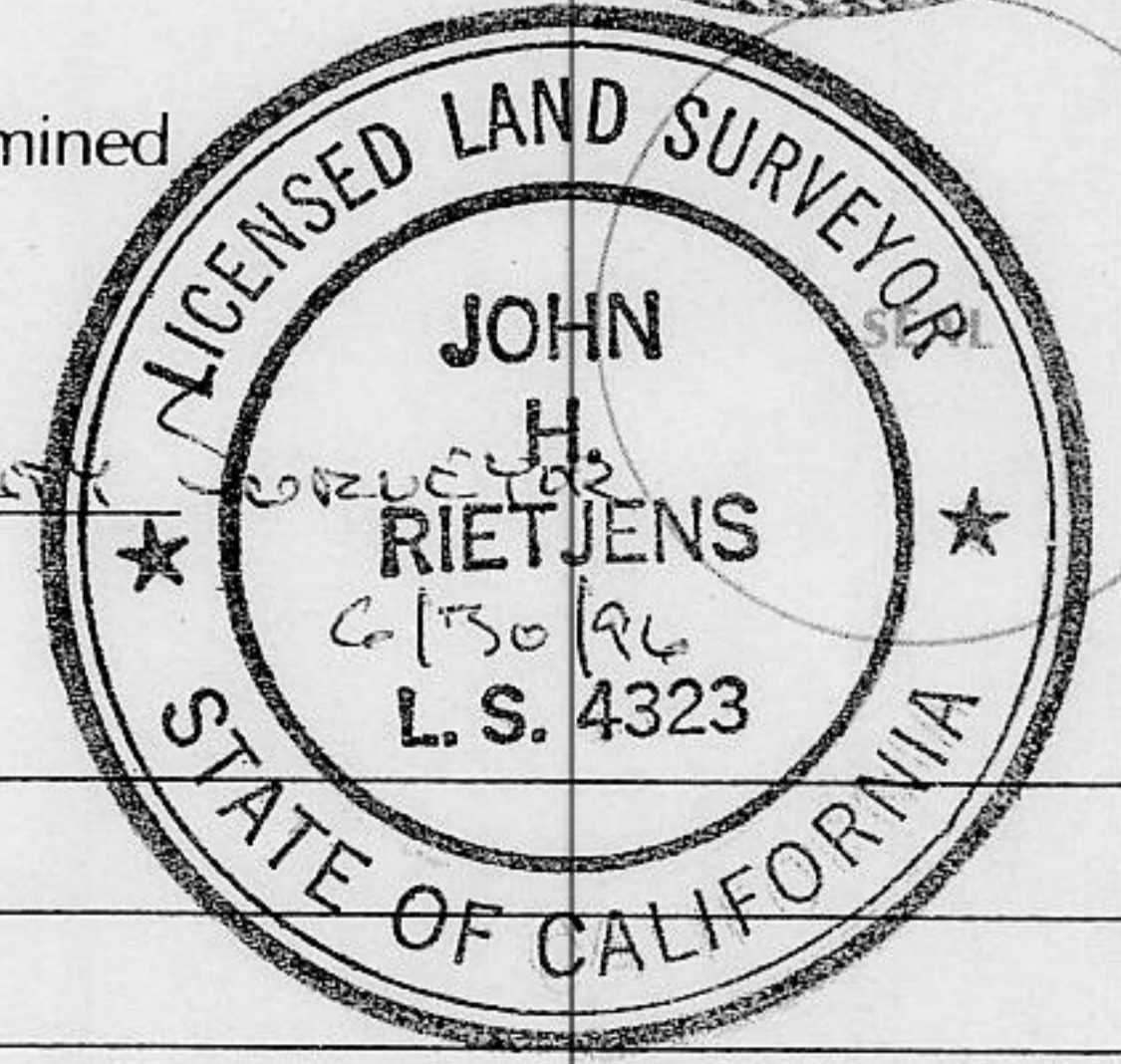


### COUNTY SURVEYOR'S STATEMENT

This Corner Record was received OCT 3 19 94 and examined

and filed 10/19 19 94.

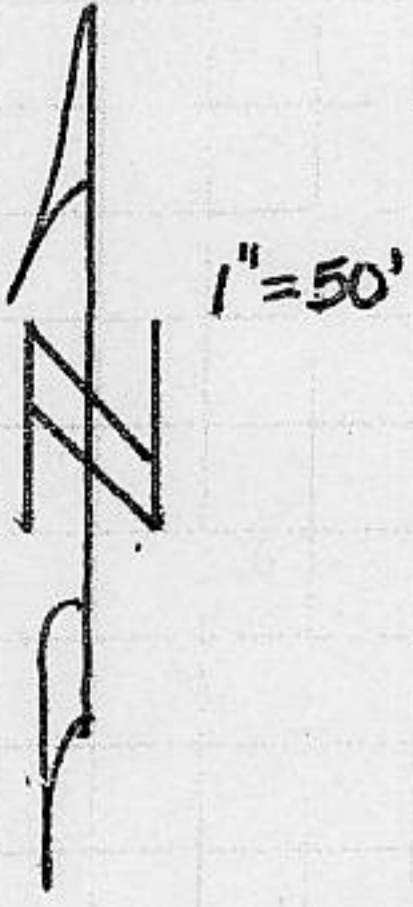
Signed John H. Rietjens Title Deputy County Surveyor



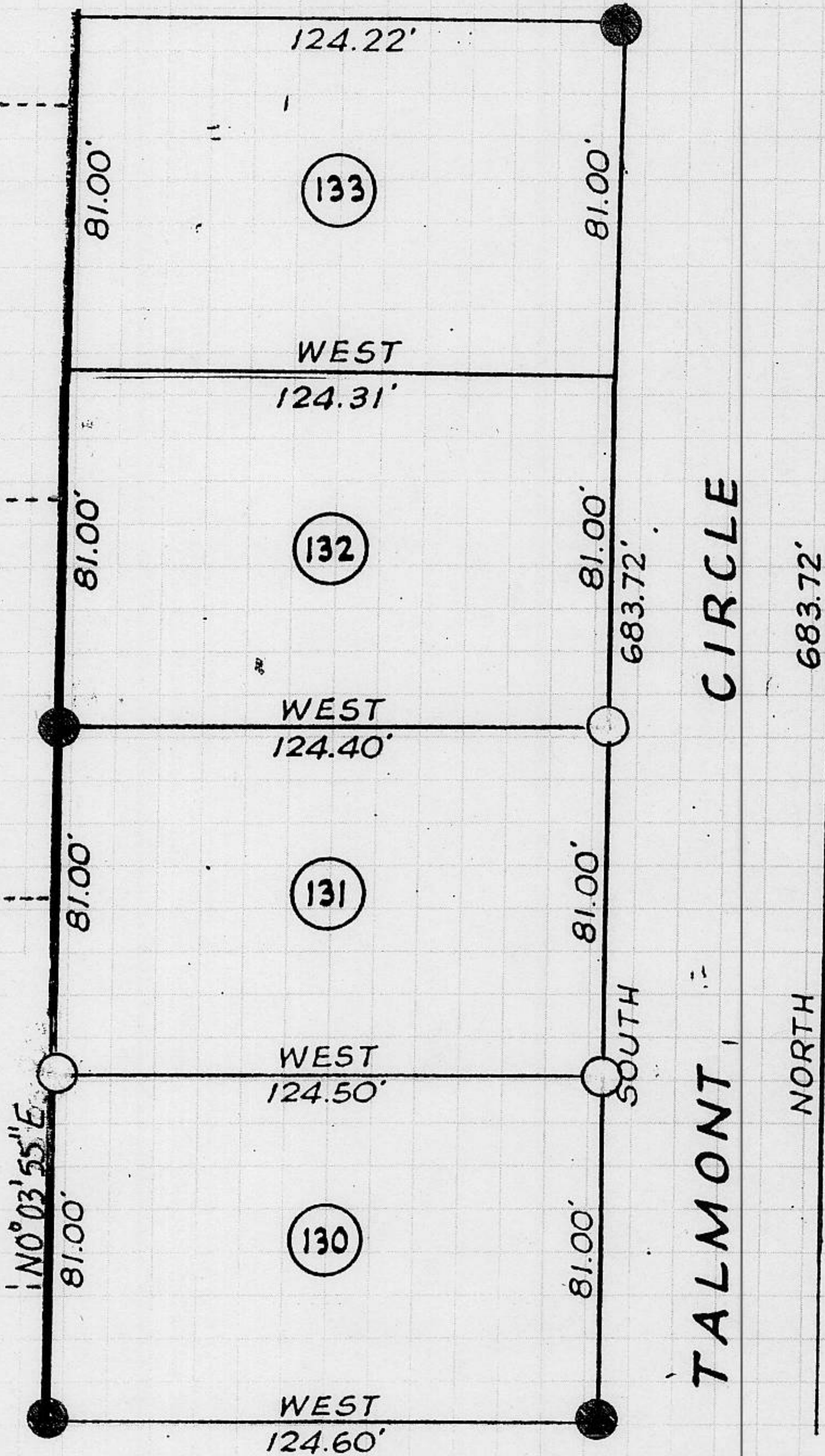
County Surveyor's Comment \_\_\_\_\_

BOOK 4 CORNER RECORDS PAGE 75

SCALE



TWIN PEAKS ESTATES UNIT NO. 1



BOOK 4 CORNER RECORDS PAGE 75

Note: Bearings and Distances shown are Record per I/Maps/1.  
No material discrepancies with Record Information were found.