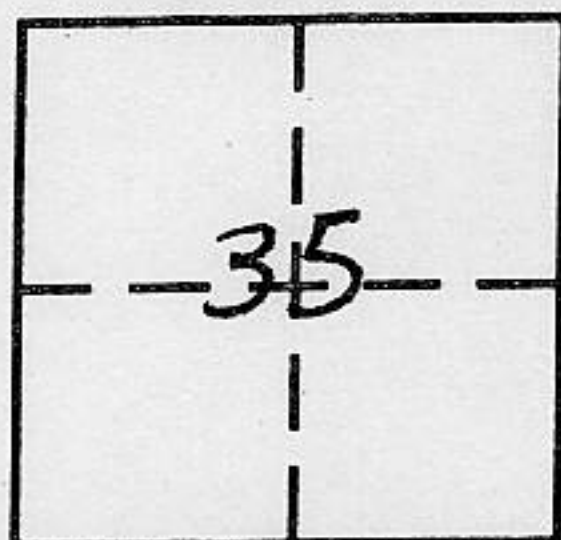


CORNER RECORD

COUNTY OF PLACER, CALIFORNIA

City of _____ Document Number _____

Brief Legal Description Lot 61, Hidden Valley Subdivision, Unit No. 3, E Maps 55 PCR



T11N
R7E

CORNER TYPE

- Government Corner
- Meander
- Rancho
- Date of Survey 9-15-94
- Control
- Property
- Other

COORDINATES (Optional)

N. _____
 E. _____
 Zone _____ Datum _____
 Elev. _____

Corner — Left as found Found and tagged Established Reestablished Rebuilt

Identification and type of corner found: Evidence used to identify or procedure used to establish or reestablish corner:

No original corners found; re-established Lot 61 from monument at East quarter-corner Section 35, T11N, R07E, M.D.M. and centerline monuments set by original surveyor in 1965, J.N. Andregg, LS2515.

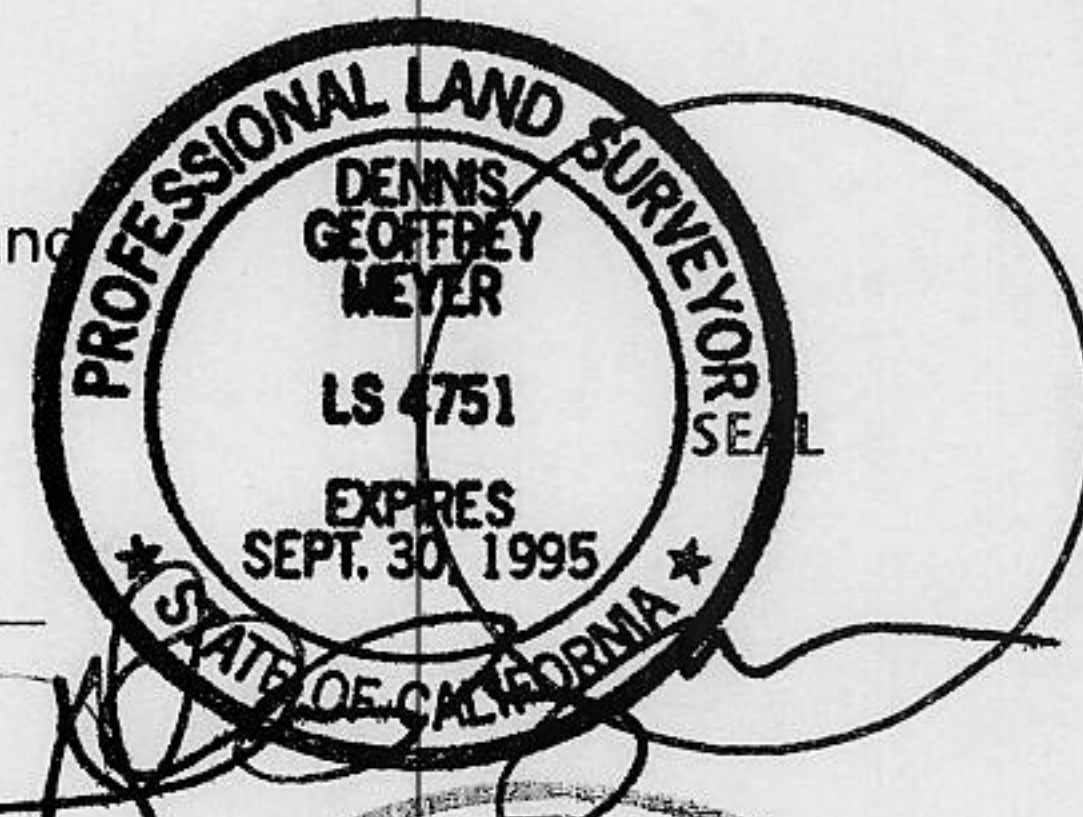
A description of the physical condition of the monument as found and as set or reset: Set railroad spikes in center-line of road for West line, set 3/4" iron pins stamped LS4751 at rear corners for East line. Original corners set in 1951 were 2" x 2" wooden stakes.

SURVEYOR'S STATEMENT

This Corner Record was prepared by me or under my direction in conformance with the Land

Surveyors' Act on November 2, _____ 19 94.

Signed [Signature] L.S. or R.C.E. Number LS4751

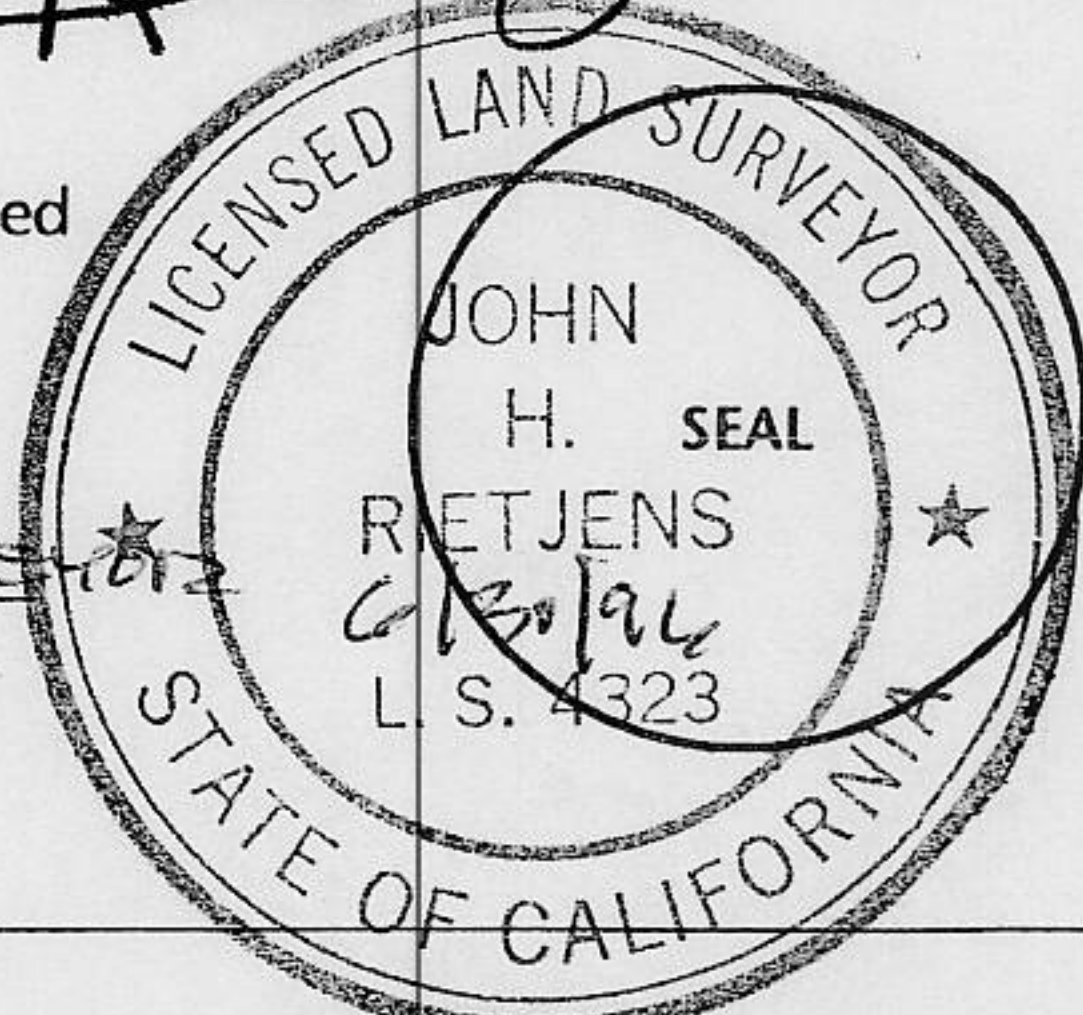


COUNTY SURVEYOR'S STATEMENT

This Corner Record was received Nov. 3 1994 and examined

and filed 11/10 1994.

Signed [Signature] Title Deputy County Surveyor



County Surveyor's Comment _____

BOOK 4 CORNER RECORDS PAGE 77

