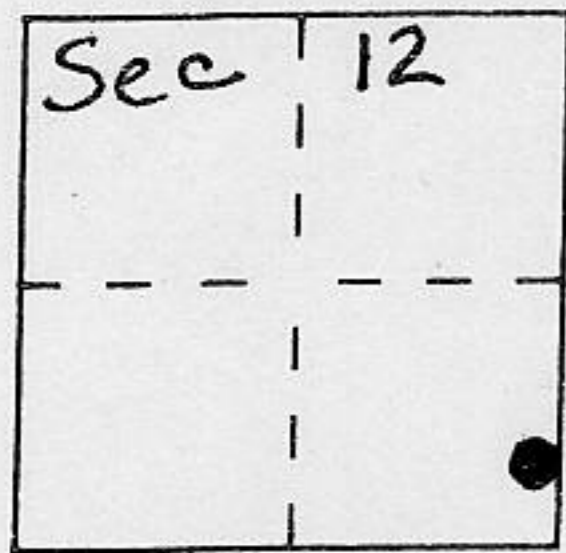


CORNER RECORD

Document Number _____

City of _____ County of Placer, California

Brief Legal Description Lot 17 Block B Re-Sub Woodvista
Book D of Maps Page 31



T.16N
R.17E
M.D.M.

CORNER TYPE

Government Corner Control
Meander Property
Rancho Other
Date of Survey 11/3/94

COORDINATES (Optional)

N. _____
E. _____
Zone _____ Datum _____
Elev. _____

Corner — Left as found Found and tagged Established Reestablished Rebuilt

Identification and type of corner found: Evidence used to identify or procedure used to establish or reestablish the corner:

- ◆ = FND. 2" I.P. W/3/4" STANDARD B.L.M. BRASS CAP
- = FND. 3/4" REBAR L.S. 2515 PER 3/ROS/70
- = FND 1/2" REBAR NO TAG

A description of the physical condition of the monument as found and as set or reset:

○ = SET 3/4" IRON PIPE W/PLASTIC PLUG L.S. 5549

94173

SURVEYOR'S STATEMENT

This Corner Record was prepared by me or under my direction in conformance with the Land Surveyors' Act on 11/5 1994.

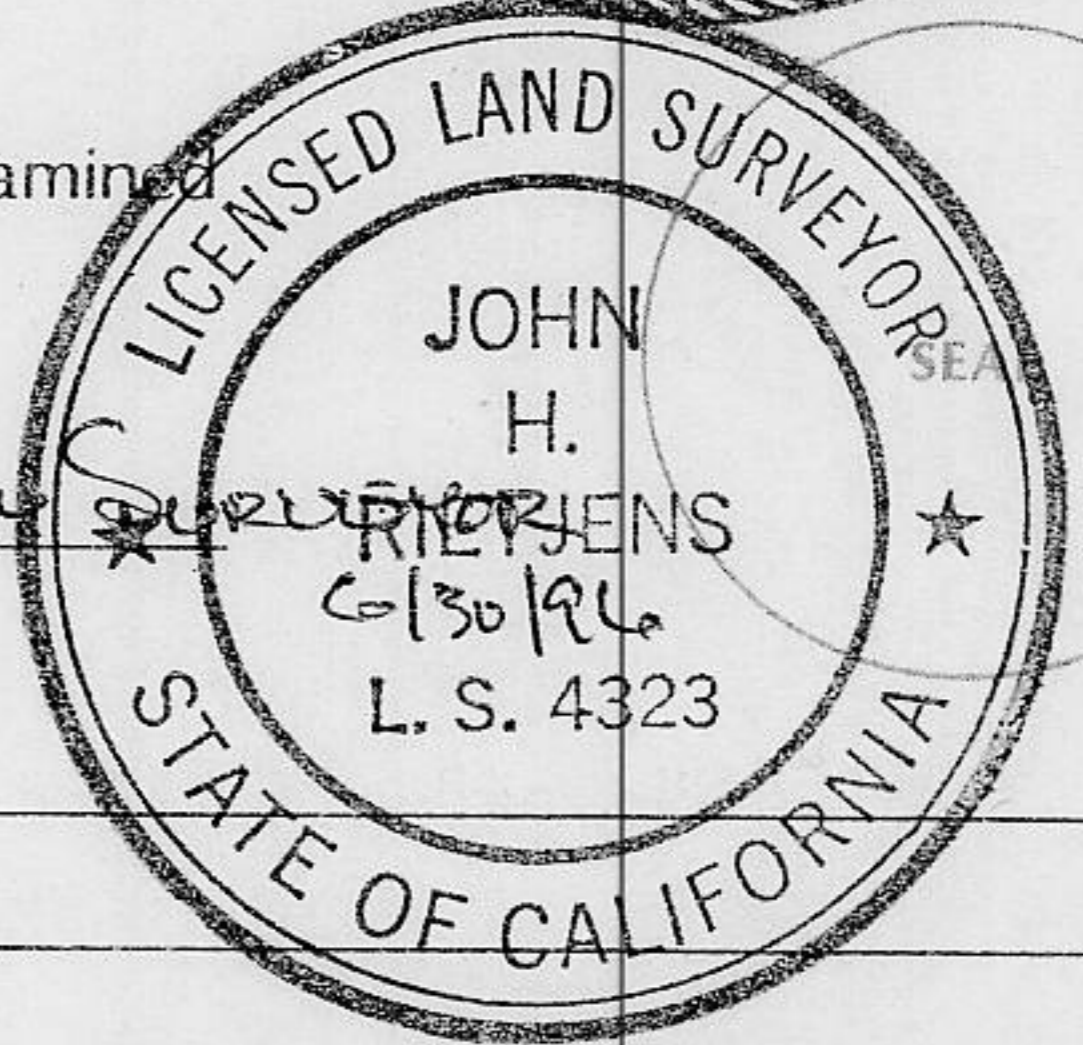
Signed Charles R. Sage Jr. L.S. or R.C.E. Number L.S. 5549
LIC. EXP. 6-30-97



COUNTY SURVEYOR'S STATEMENT

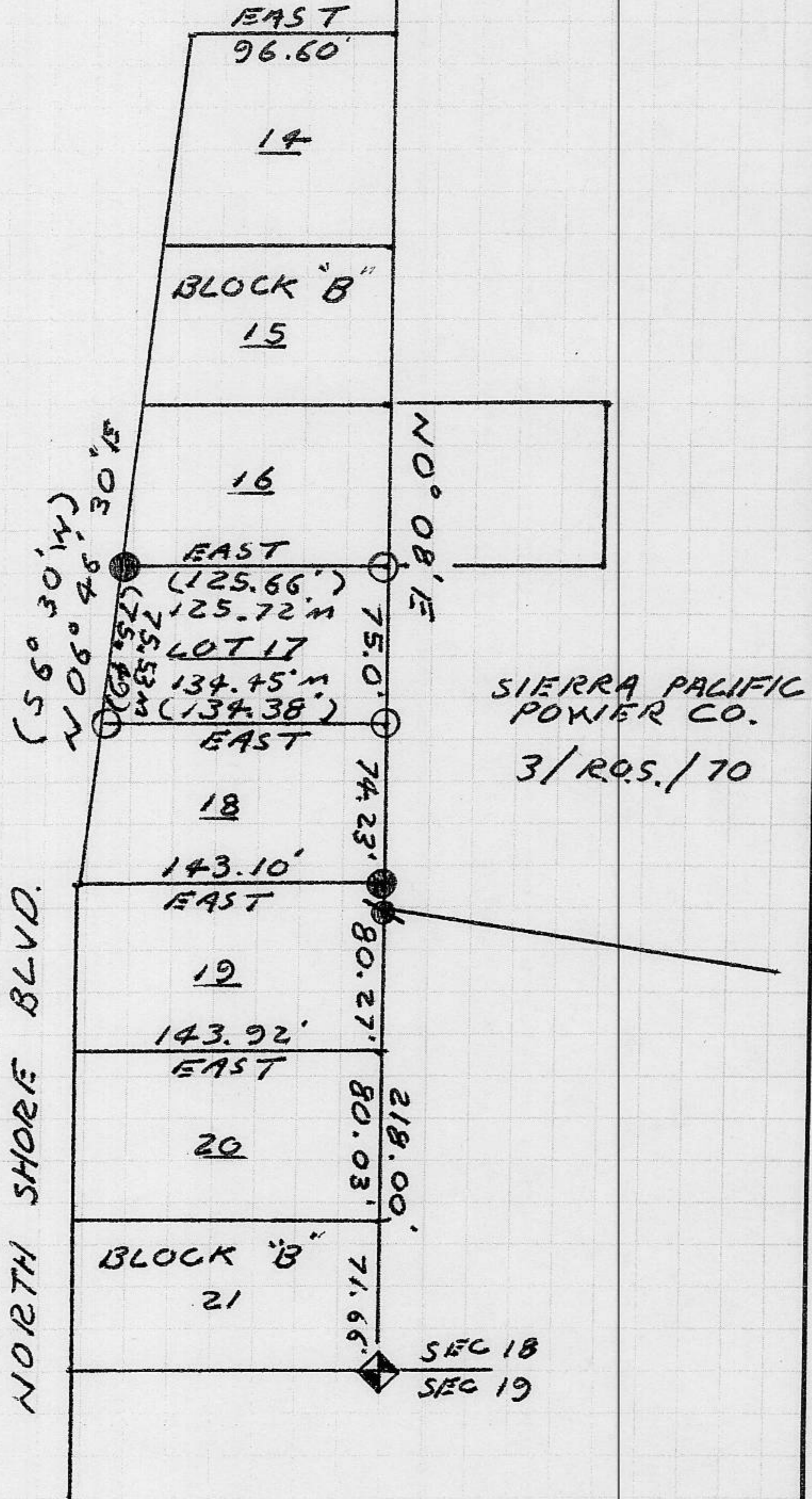
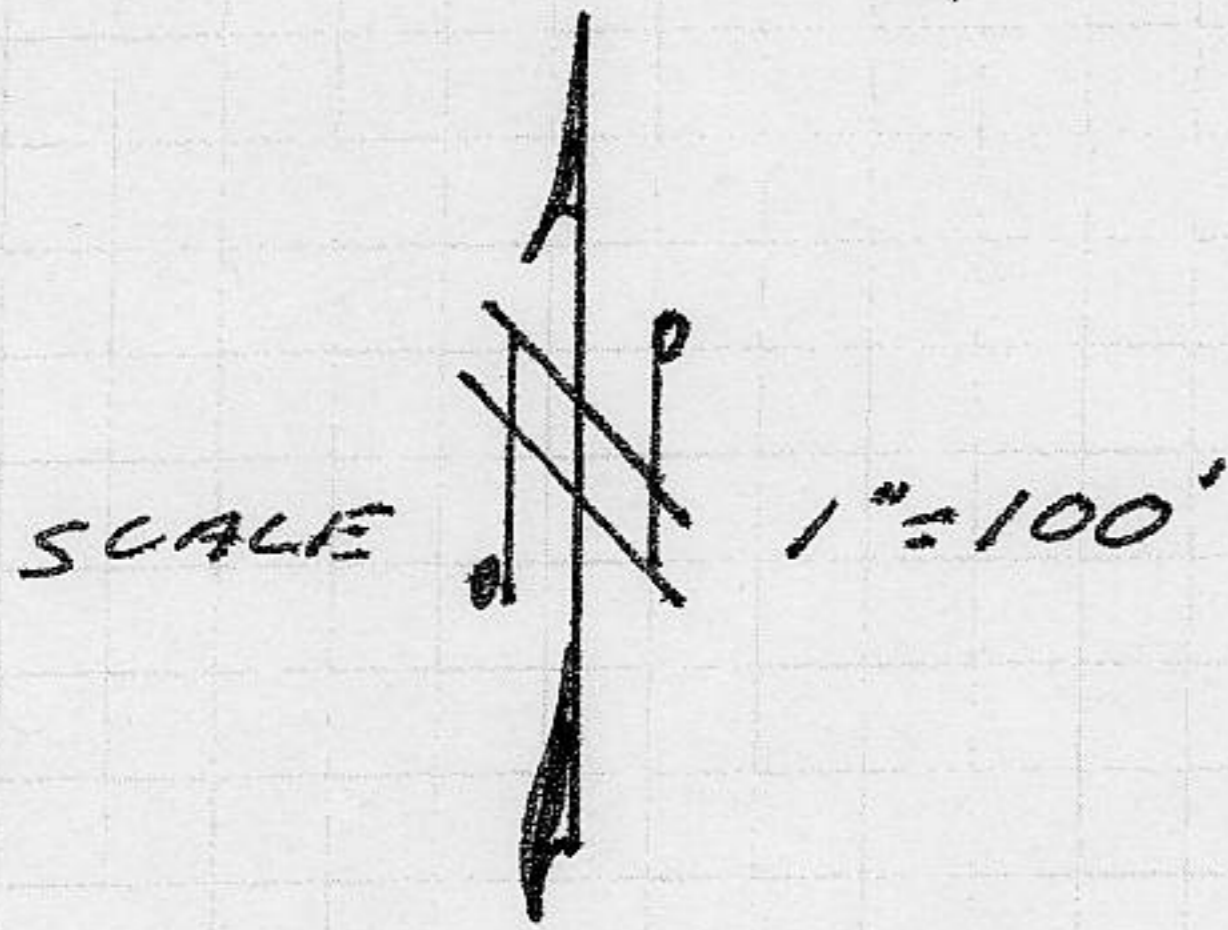
This Corner Record was received DEC 12 1994 and examined and filed DEC 16 1994.

Signed John H. Rieffens Title Deputy County Surveyor



County Surveyor's Comment _____

BOOK 4 CORNER RECORDS PAGE 83



Note: Bearings and distances shown are Record per D/Maps/31, No material discrepancies with record information were found.