

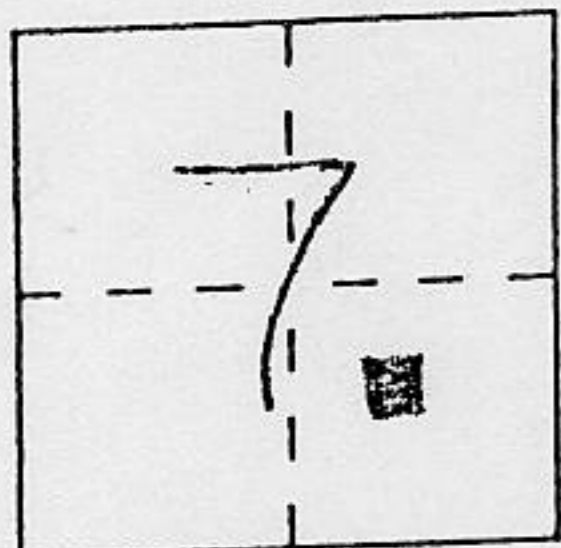
# CORNER RECORD

Document Number \_\_\_\_\_

City of \_\_\_\_\_

County of PLACER, California

Brief Legal Description LOT 113 CHAMBERLANDS SUB. UNIT 'C' SW 1/4  
SEC 7, T14N. R17E M.D.B.M. BOOK G @ PAGE 5 P.C.R.



### CORNER TYPE

Government Corner  Control   
Meander  Property   
Rancho  Other   
Date of Survey 7-22-94

### COORDINATES (Optional)

N. \_\_\_\_\_  
E. \_\_\_\_\_  
Zone \_\_\_\_\_ Datum \_\_\_\_\_  
Elev. \_\_\_\_\_

Corner — Left as found  Found and tagged  Established  Reestablished  Rebuilt

Identification and type of corner found: Evidence used to identify or procedure used to establish or reestablish the corner:

SEE SKETCH BACK

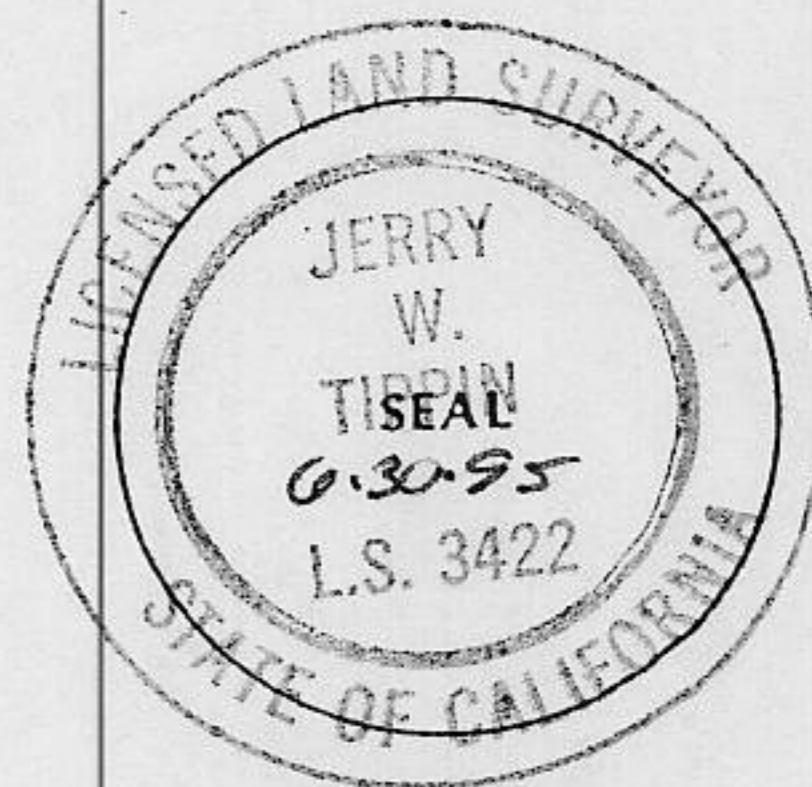
A description of the physical condition of the monument as found and as set or reset:

SEE SKETCH BACK

### SURVEYOR'S STATEMENT

This Corner Record was prepared by me or under my direction in conformance with the Land Surveyors' Act on 07-27- 1994.

Signed Jerry W. Tiseal L.S. or R.C.E. Number 3422

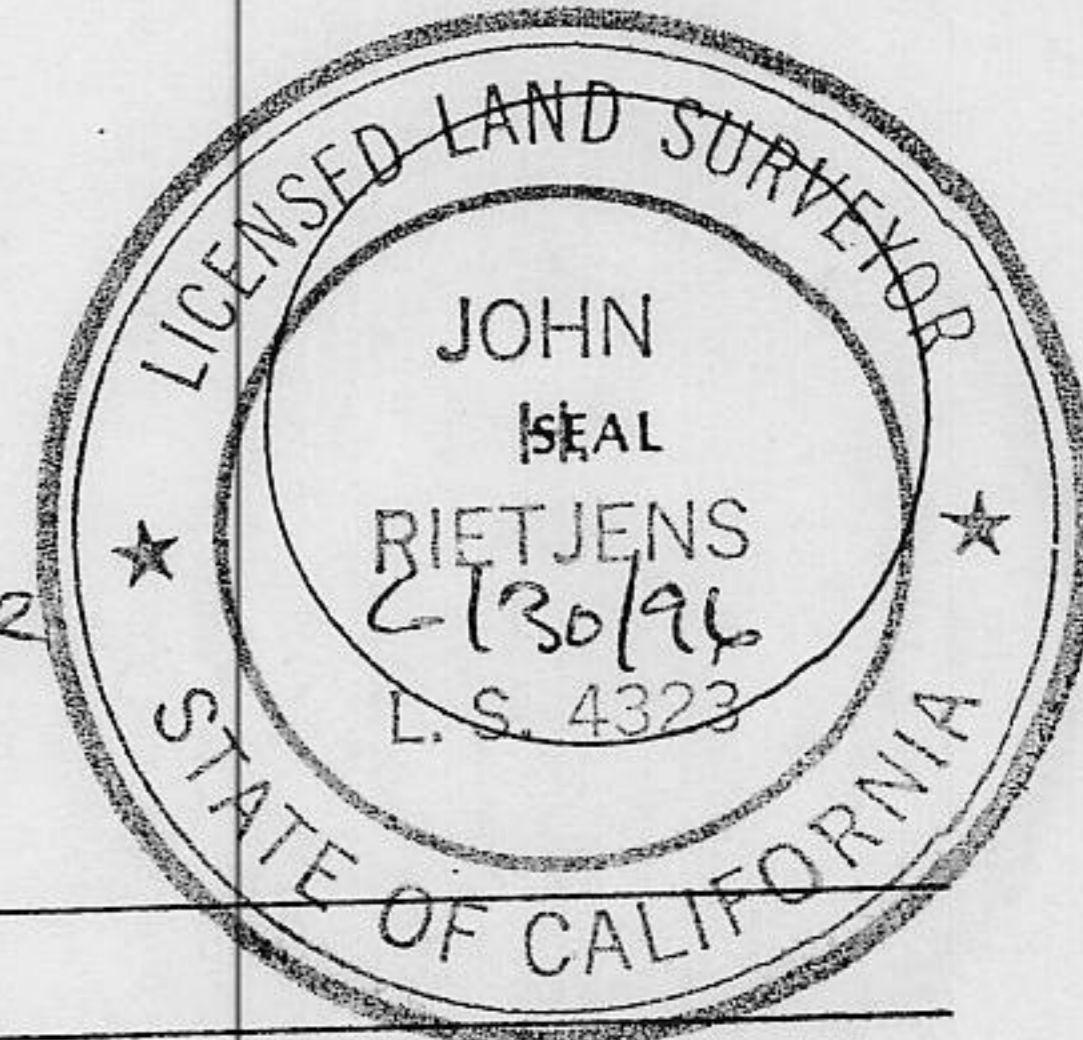


### COUNTY SURVEYOR'S STATEMENT

This Corner Record was received 3/31 1995 and examined

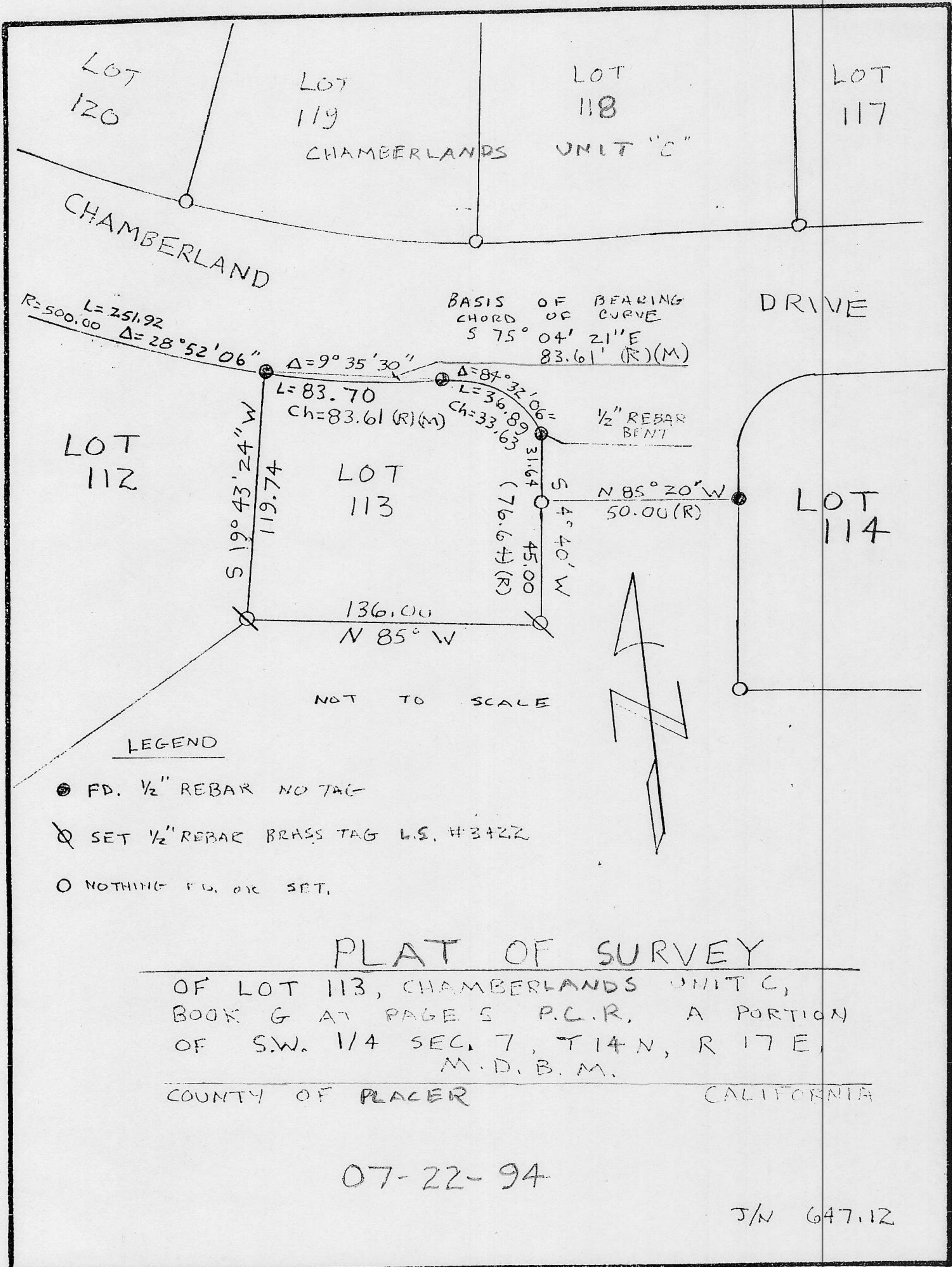
and filed 4/3 1995.

Signed John Rietsjens Title DEPUTY Co. SURVEYOR



County Surveyor's Comment \_\_\_\_\_

BOOK 4 CORNER RECORDS PAGE 89



BOOK 4 CORNER RECORDS PAGE 89

PLAT OF SURVEY

OF LOT 113, CHAMBERLANDS UNIT C,  
 BOOK G AT PAGE 5 P.C.R. A PORTION  
 OF S.W. 1/4 SEC. 7, T14N, R17E,  
 M.D.B.M.

COUNTY OF PLACER      CALIFORNIA

07-22-94

J/N 647.12