

**CORNER RECORD**

COUNTY OF PLACER T. 16 N R. 17 E M.D.B. MERIDIAN CALIFORNIA

CORNER TYPE: GOV'T. CORNER  MEANDER  RANCHO  CONTROL  OTHER   
 CORNER IDENTIFICATION - DATE OF VISIT SEPT. 21, 19 93



LOT 18 CALEDONIA SUBDIVISION, BOOK "D" MAPS PG. 91

CORNER - LEFT AS FOUND  FOUND AND TAGGED  REESTABLISHED OBLITERATED CORNER  REBUILT

PHYSICAL DESCRIPTION OF CORNER FOUND: EVIDENCE AND METHOD USED TO IDENTIFY OR REESTABLISH

● FOUND MONUMENT AS NOTED

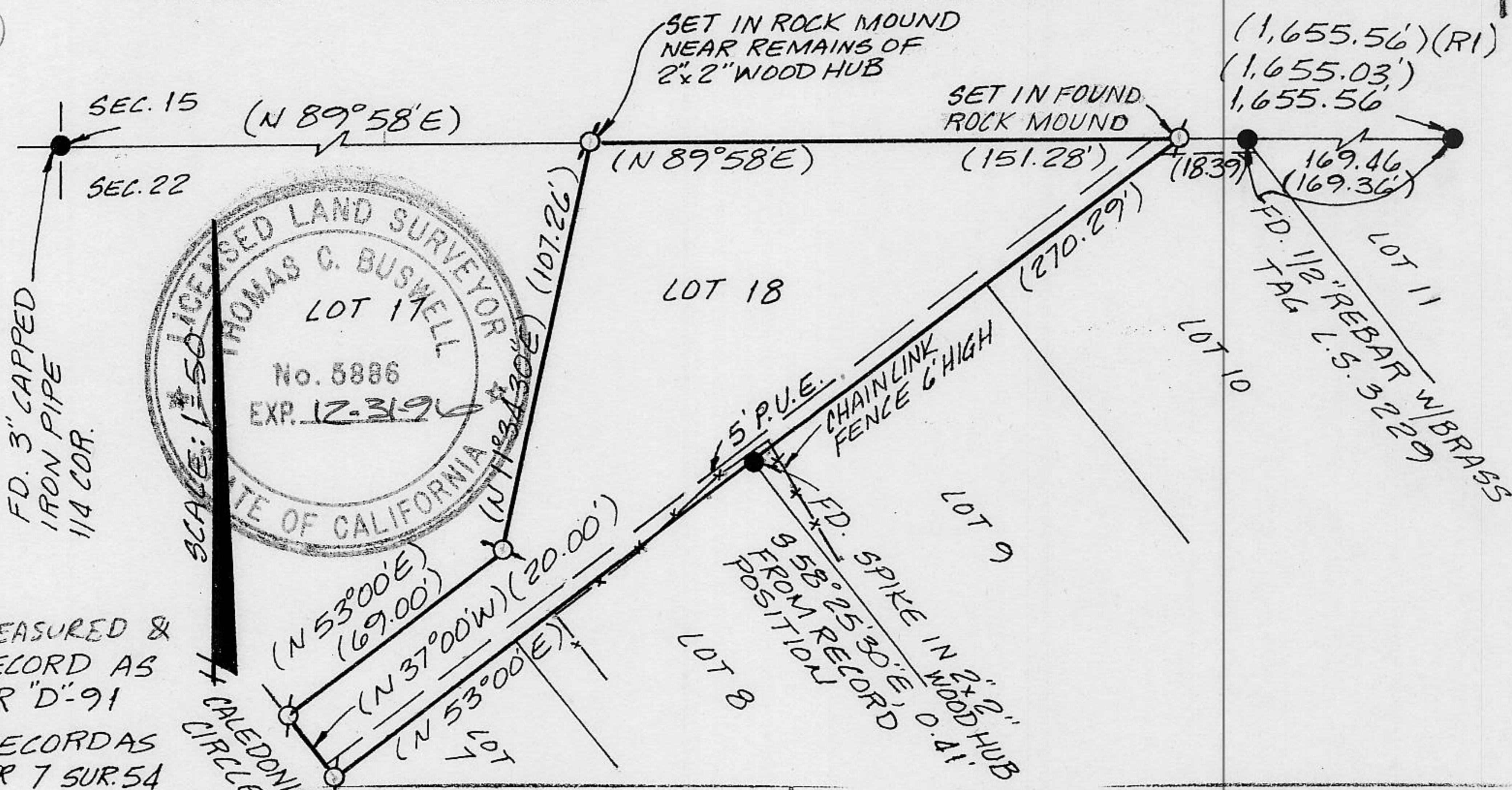
PHYSICAL DESCRIPTION OF MONUMENTS REBUILT OR PERPETUATED

∅ SET 5/8" REBAR W/2" METAL CAP, STAMPED TAHOE BASIN  
LAND SURVEYING, L.S. 5886

CALIFORNIA COORDINATE SYSTEM ORDER: FIRST  SECOND  THIRD  N/A

STATIONS USED: NGS (USC & GS)  STATE  COUNTY  OTHER  STATION \_\_\_\_\_ STATION \_\_\_\_\_

ZONE \_\_\_\_\_ ELEVATION \_\_\_\_\_ NORTHINGS (Y) \_\_\_\_\_ EASTINGS (X) \_\_\_\_\_



MEASURED &  
 ) RECORD AS  
 PER "D":91  
 ) RECORD AS  
 PER 7 SUR.54

**SURVEYOR'S CERTIFICATE**

THIS CORNER RECORD WAS PREPARED BY ME OR UNDER MY DIRECTION IN CONFORMANCE WITH THE LAND SURVEYORS ACT ON SEPT. 21, 19 93

SIGNED: [Signature]

L.S. or R.C.E. No.: L.S. 5886

SEAL

**COUNTY SURVEYOR'S CERTIFICATE**

THIS CORNER RECORD WAS RECEIVED OCT. 15, 19 93 AND EXAMINED AND FILED 12/8, 19 93

BY: [Signature]  
 TITLE: DEPUTY CO. SURVEYOR

DOCUMENT No. \_\_\_\_\_  
 STATEMENT ON BACK OF SHEET

YES  NO

BOOK 4 CORNER RECORDS PAGE 2