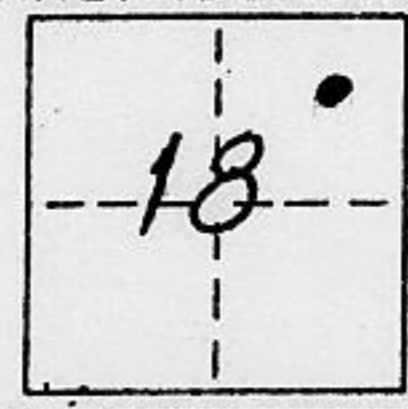


CORNER RECORD

COUNTY OF PLACER T. 14N R. 17E MDB MERIDIAN CALIFORNIA
 CORNER TYPE: GOV'T. CORNER MEANDER RANCHO CONTROL OTHER
 CORNER IDENTIFICATION - DATE OF VISIT AUG. 31 1993



LOT 4
BLOCK 2 MCKINNEY ESTATES UNIT NO. 1 BOOK "F" MAPS PAGE 61

CORNER - LEFT AS FOUND FOUND AND TAGGED REESTABLISHED OBLITERATED CORNER REBUILT

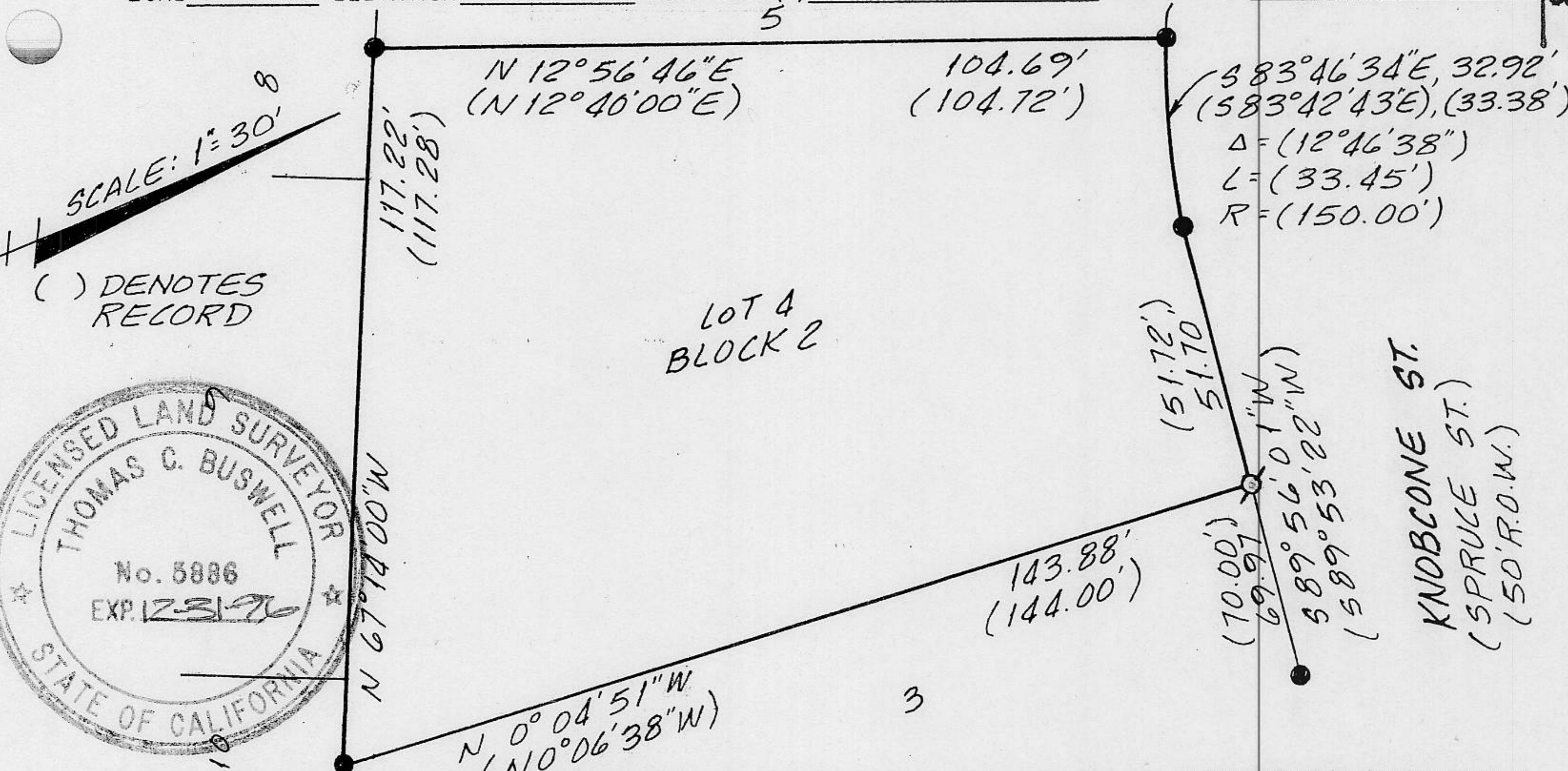
PHYSICAL DESCRIPTION OF CORNER FOUND: EVIDENCE AND METHOD USED TO IDENTIFY OR REESTABLISH

● FOUND 1/2" REBAR, NO TAG

PHYSICAL DESCRIPTION OF MONUMENTS REBUILT OR PERPETUATED

♂ SET 5/8" REBAR W/ 1/2" METAL CAP, STAMPED L.S. 5886
TAHOE BASIN LAND SURVEYING

CALIFORNIA COORDINATE SYSTEM ORDER: FIRST SECOND THIRD N/A
 STATIONS USED: NGS (USC & GS) STATE COUNTY OTHER STATION _____ STATION _____
 ZONE _____ ELEVATION _____ NORTHINGS (Y) _____ EASTINGS (X) _____



SURVEYOR'S CERTIFICATE
 THIS CORNER RECORD WAS PREPARED BY ME OR UNDER MY DIRECTION IN CONFORMANCE WITH THE LAND SURVEYORS ACT ON SEPT. 3, 1993
 SIGNED: [Signature]
 L.S. or R.C.E. No.: L.S. 5886
 SEAL

COUNTY SURVEYOR'S CERTIFICATE
 THIS CORNER RECORD WAS RECEIVED NOV 8 1993
 AND EXAMINED AND FILED 12/8 1993
 BY: [Signature]
 TITLE: DEPUTY COUNTY SURVEYOR
 DOCUMENT No. _____
 STATEMENT ON BACK OF SHEET YES NO

BOOK 4 CORNER RECORDS PAGE 3