

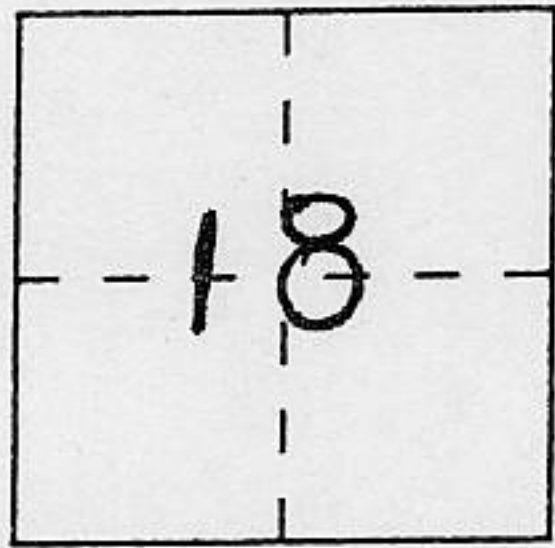
CORNER RECORD

Document Number _____

City of _____

County of PLACER, California

Brief Legal Description LOT 6, BLOCK 2, MCKINNEY ESTATES UNIT 1, F/MAPS/61



T 14 N
R 17 E

CORNER TYPE

- Government Corner
- Meander
- Rancho
- Date of Survey 11-18-93
- Control
- Property
- Other

COORDINATES (Optional)

N. _____
 E. _____
 Zone _____ Datum _____
 Elev. _____

Corner — Left as found Found and tagged Established Reestablished Rebuilt

Identification and type of corner found: Evidence used to identify or procedure used to establish or reestablish the corner:

SEE SKETCH ON PAGE 2

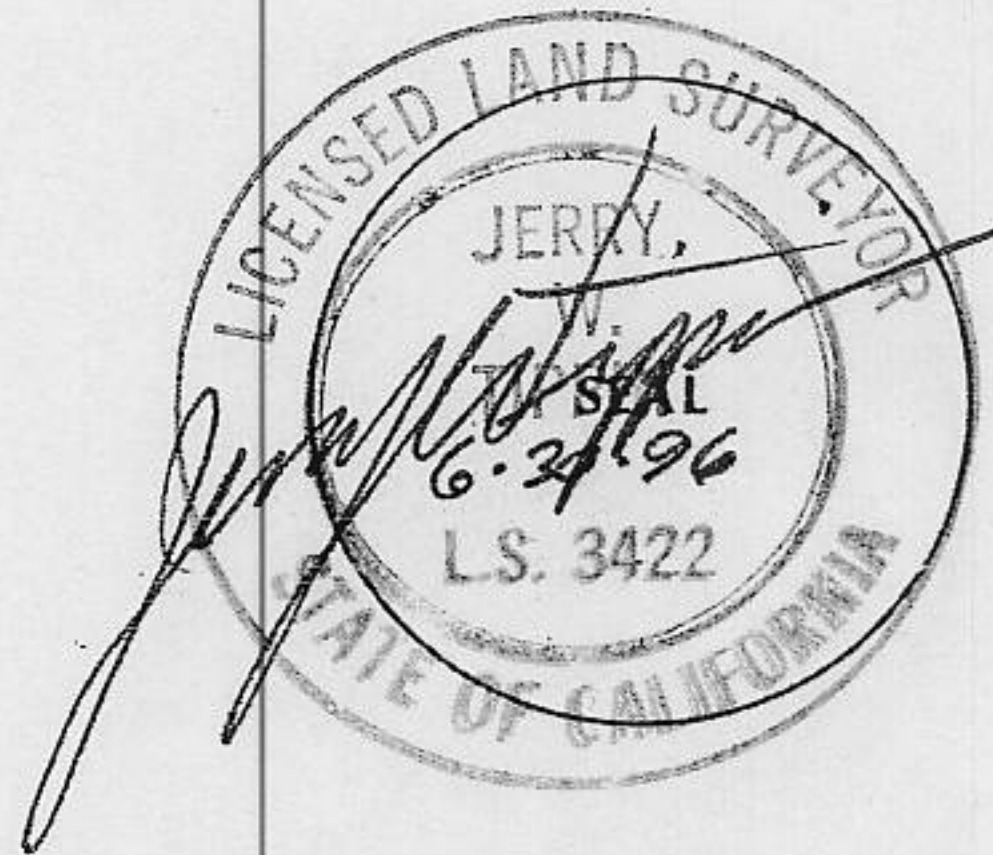
A description of the physical condition of the monument as found and as set or reset:

SEE SKETCH ON PAGE 2

SURVEYOR'S STATEMENT

This Corner Record was prepared by me or under my direction in conformance with the Land Surveyors' Act on DEC 13 1993

Signed [Signature] L.S. or R.C.E. Number 3422

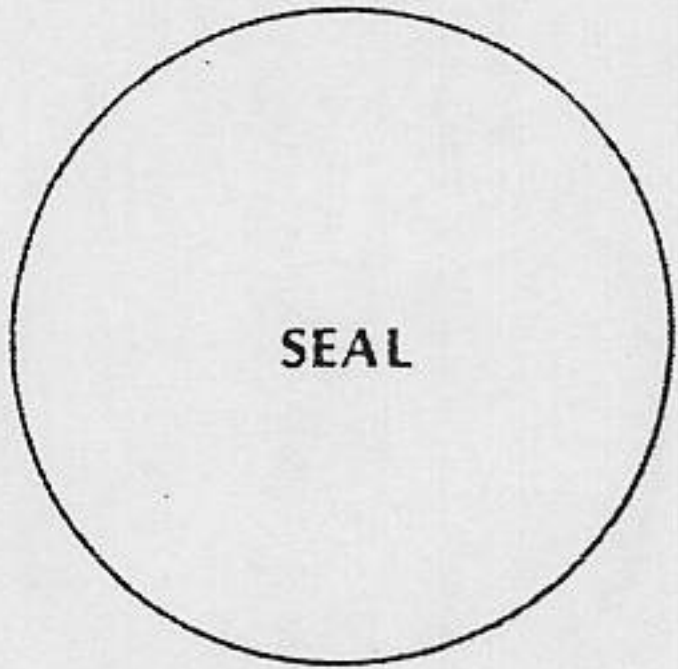


COUNTY SURVEYOR'S STATEMENT

This Corner Record was received DEC 16 1993 and examined

and filed DEC 29 1993.

Signed [Signature] Title DEPUTY COUNTY SURVEYOR

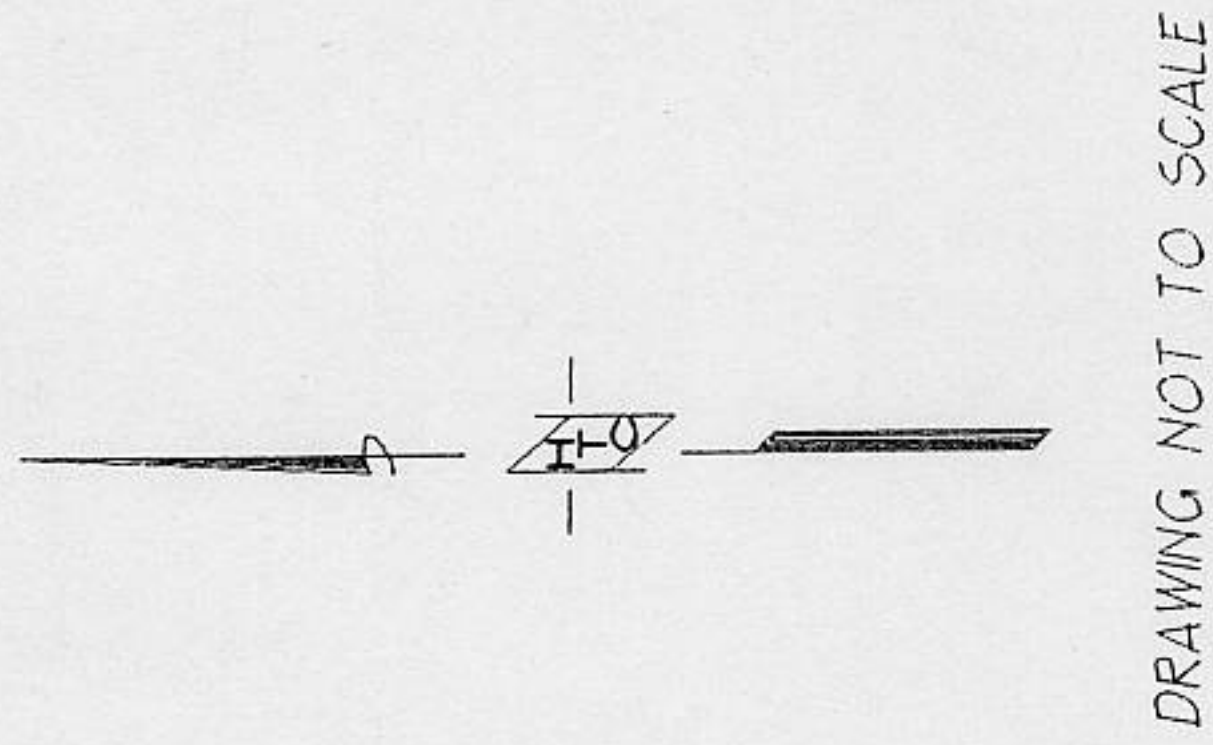


County Surveyor's Comment _____

BOOK 4 CORNER RECORDS PAGE 7

PLAT OF SURVEY

LOT #6 OF BLOCK #2 IN MCKINNEY ESTATES UNIT 1 AS SHOWN IN BOOK F AT PAGE 61, PLACER CO. RECORDS, BEING A PORTION OF THE N.W. 1/4 OF SECTION 18, T.14N., R.17E., M.D.B. + M. CALIFORNIA PLACER COUNTY



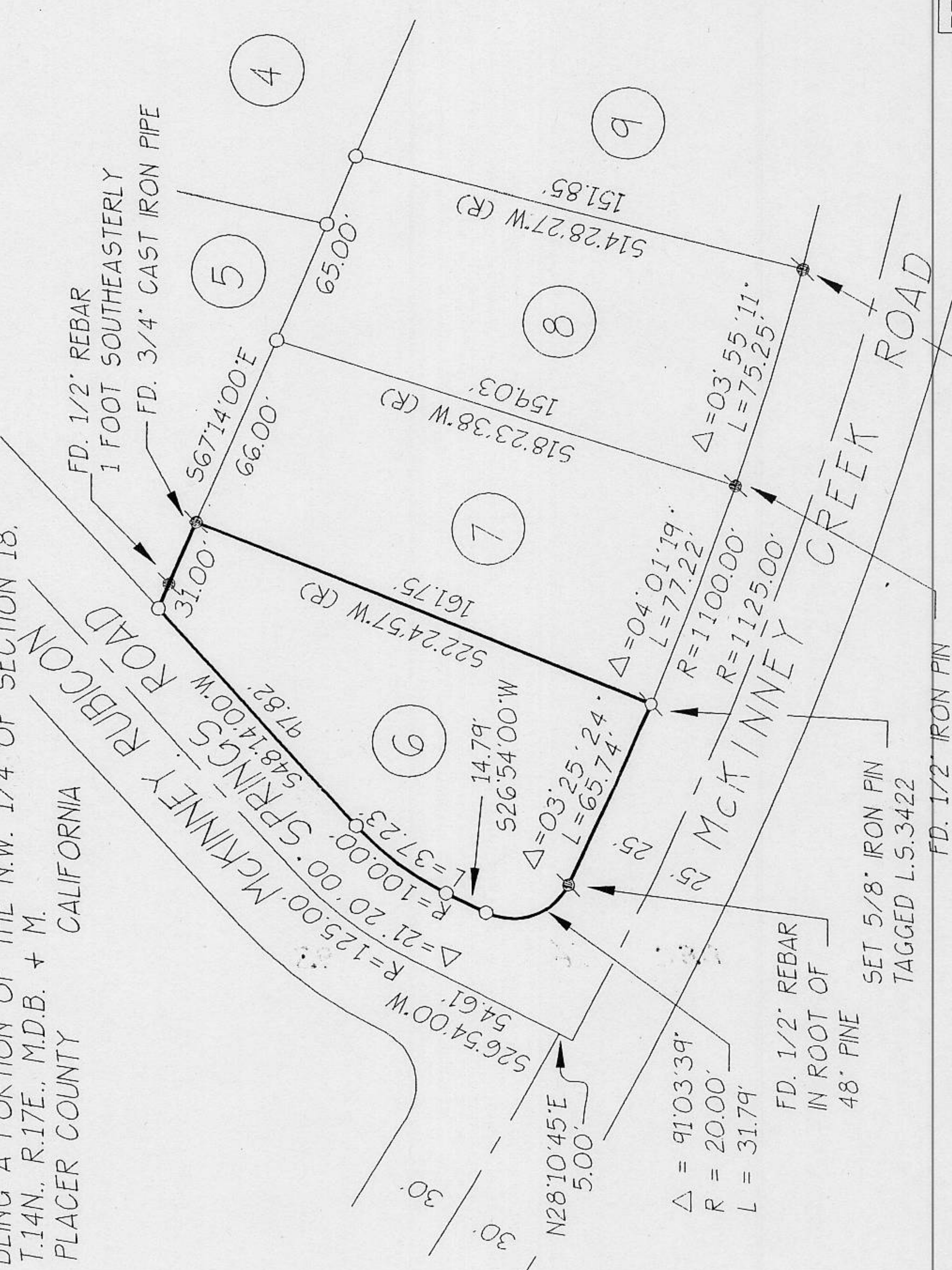
DRAWING NOT TO SCALE

LEGEND

- ⊗ SET IRON PIN AS NOTED
- ⊗ FOUND MONUMENT AS NOTED
- DIMENSION POINT NOTHING FOUND OR SET

ENGINEERING & SURVEYING
CONSTRUCTION MANAGEMENT
PLANNING
3092 North Lake Boulevard
Yuba City, CA 96145
(916) 581-1116
FAX (916) 583-6818

HALE-TIPPIN
CONSULTANTS



SET 5/8" IRON PIN
TAGGED L.S.3422

FD. 1/2" REBAR
IN ROOT OF
48" PINE

FOR JAMES LEACH A.P.N. 98-280-006
JOB # 647.01 DISK #2153 DWG:647CRO1